

Camp profile

Basirma Refugee Camp, Erbil, KR - Iraq

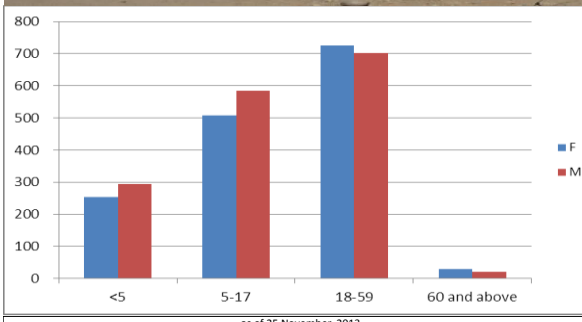
Camp opened: 26.08.2013

As of 25 Nov. 2013



Geographic Snapshot and Contextual Background

GPS coordinates:	44° 20' 28.084"E 36°29' 50.773"N
Region and State:	Khabat, Erbil. KR - Iraq
Size of camp area:	150,000 m²
Pattern in Population Change:	Hosting refugees who entered KR after the 15.8.2013 influx
Areas of Origin:	Majority is from Qamishli and Hasak in Syria.



Refugee Population

approximately
3,120
(Individuals)

as of 25.11.2013

Planned capacity:
4,580
(Individuals)



Needs Met	Analysis	Minimum Sectoral Data (standard)	Minimum Sectoral Data
	Health: There is a temporary PHC in the camp. Primary health care is provided through the temporary site.	► Extent PoCs have access to primary health care. 1 health centre for 20,000 persons.	► 1 health post (permanent), 2 ambulances
	WASH: The sanitation is available in the camp.	► Liters of water/person /day: 20 ► Persons per latrine: <20 ► Persons per shower: <20	► Liters of water/person /day: 144 ► Persons per latrine: 19 ► Persons per showers: 19
	Protection: Registration Level 1 is completed. Verifications and updates ongoing.	► 100 % of PoC registered on individual basis .	► 100 % Population registered on family basis.
	CRIs: Refugees received CRI kits upon arrival in the camp including distribution of winterization kits.	► 100% of households whose needs for basic and domestic items are met.	► 100 % of households whose needs for basic and domestic items are met.
	Shelter: Shelter and infrastructure established, improved and maintained.	► Average camp area per person 30 sq m ► 100% of households living in adequate dwellings.	► Average camp area per person 37 sq m ► 100 % of households living in adequate dwellings.
Minimum Sectoral Data Key:		= standard met or exceeded	= standard not met

