

Registered (May. 16 - May. 22)

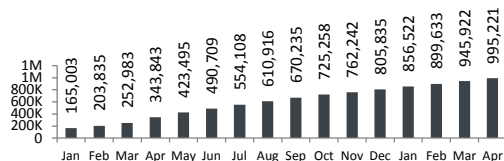
Beirut & Mt. Leb.	3,546
North	2,359
Bekaa	4,049
South	949
Total	10,903


1,081,676
Total
1,024,887
Registered
56,789
Awaiting
Total
Average
waiting period

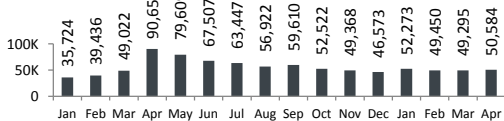
Beirut & Mt. Leb.	14,012	22
North	5,758	20
Bekaa	35,365	35
South	1,654	10
Total	56,789	30

UNHCR Registered

■ Total Active Syrians (as of the end of each month)




■ Syrians Registration by Month


Place of Origin

Homs	233,726	22.8%
Aleppo	202,584	19.8%
Idlib	140,732	13.7%
Rural Damascus	138,231	13.5%
Hama	75,377	7.4%
Dar'a	68,052	6.6%
Damascus	50,609	4.9%
Ar-raqqa	46,632	4.5%
Al-hasakeh	24,863	2.4%
Deir-ez-zor	19,415	1.9%
Quneitra	7,741	0.8%
Lattakia	4,221	0.4%
Tartous	3,011	0.3%
As-sweida	629	0.1%
Others, n/a	9,064	0.9%

Distribution of Syrians in Lebanon

Persons Households % Total

Beirut	28,622		Beirut	28,622	8,023	2.8%
	8,023					
Mount Lebanon	244,141		El Meten	49,707	13,757	4.8%
	60,230		Baabda	80,532	19,359	7.9%
			Kesrwane	11,391	3,172	1.1%
			Chouf	47,980	10,913	4.7%
			Aley	50,800	11,998	5.0%
			Jbeil	3,731	1,031	0.4%
North	273,939		Akkar	104,633	25,965	10.2%
	68,515		Tripoli	64,156	17,135	6.3%
			El Minieh-Denr	57,374	14,048	5.6%
			El Koura	16,010	3,978	1.6%
			El Batroun	16,486	3,764	1.6%
			Zgharta	12,847	3,076	1.3%
			Bcharre	2,433	549	0.2%
Bekaa	351,455		Zahle	162,907	34,369	15.9%
	75,496		Baalbek	111,627	24,733	10.9%
			West Bekaa	60,114	12,806	5.9%
			Rachaya	10,922	2,351	1.1%
			El Hermel	5,885	1,237	0.6%
South	126,730		Sour	30,091	6,856	2.9%
	28,261		Saida	46,735	10,385	4.6%
			Marjaayoun	6,984	1,502	0.7%
			Jezzine	2,692	623	0.3%
			El Nabatieh	27,777	6,088	2.7%
			Hasbaya	5,008	1,213	0.5%
			Bent Jbeil	7,443	1,594	0.7%
Total Lebanon	1,024,887					
	240,525					

* Number of villages in Lebanon hosting Syrians is 1,738

Age & Gender

Age	0-4	5-11	12-17	18-59	60+	Total	
Female	96,301	106,026	62,457	253,971	15,809	534,564	52.2%
Male	100,628	112,334	63,625	201,636	12,100	490,323	47.8%
Total	196,929	218,360	126,082	455,607	27,909	1,024,887	100.0%
	19.2%	21.3%	12.3%	44.5%	2.7%		

