



KEY ACHIEVEMENT OF THE MONTH

1,103,866 doses of Polio vaccine administered to children below 5 years

HIGHLIGHTS:

The fourth polio vaccination campaign occurred in April targeting children under 5 years old. Opportunistic complementary activities also included measles/rubella vaccinations for children aged 9 months-18 years old and Vitamin A supplementation for children aged 6 months to 18 years.

The campaign covered all affected populations and targeted informal settlements, collective shelters, schools, primary healthcare centres, private clinics, as well as a door-to-door campaign in the most high-risk areas.

High demand for secondary and tertiary healthcare services are a constant feature of this response. The majority of cases are admitted for deliveries, obstetric emergencies and neo-natal conditions. The health sector has prioritised access to secondary healthcare services based on life threatening conditions and good prognosis.

Not all cases requiring secondary and tertiary level healthcare meet the prioritisation criteria and can not be covered by the response. This gap is a major concern for the health sector that is advocating for more resources to facilitate better health access.



One Syrian Refugee child during the Polio Campaign vaccination in Lebanon

QUICK STEPS TO ACCESSING MEDICAL TREATMENT IN LEBANON

STEP 1

Get registered!



STEP 2

Contact a Primary Health Center or dispensary to see a doctor.



STEP 3

If your doctor says you need to go to the hospital, contact GlobeMed Lebanon.



In a life-threatening emergency you can go straight to a Hospital but remember to contact GlobeMed Lebanon on **01-518111**
Then Press **1** Then Press **1** if you live in Beirut/Mount Lebanon

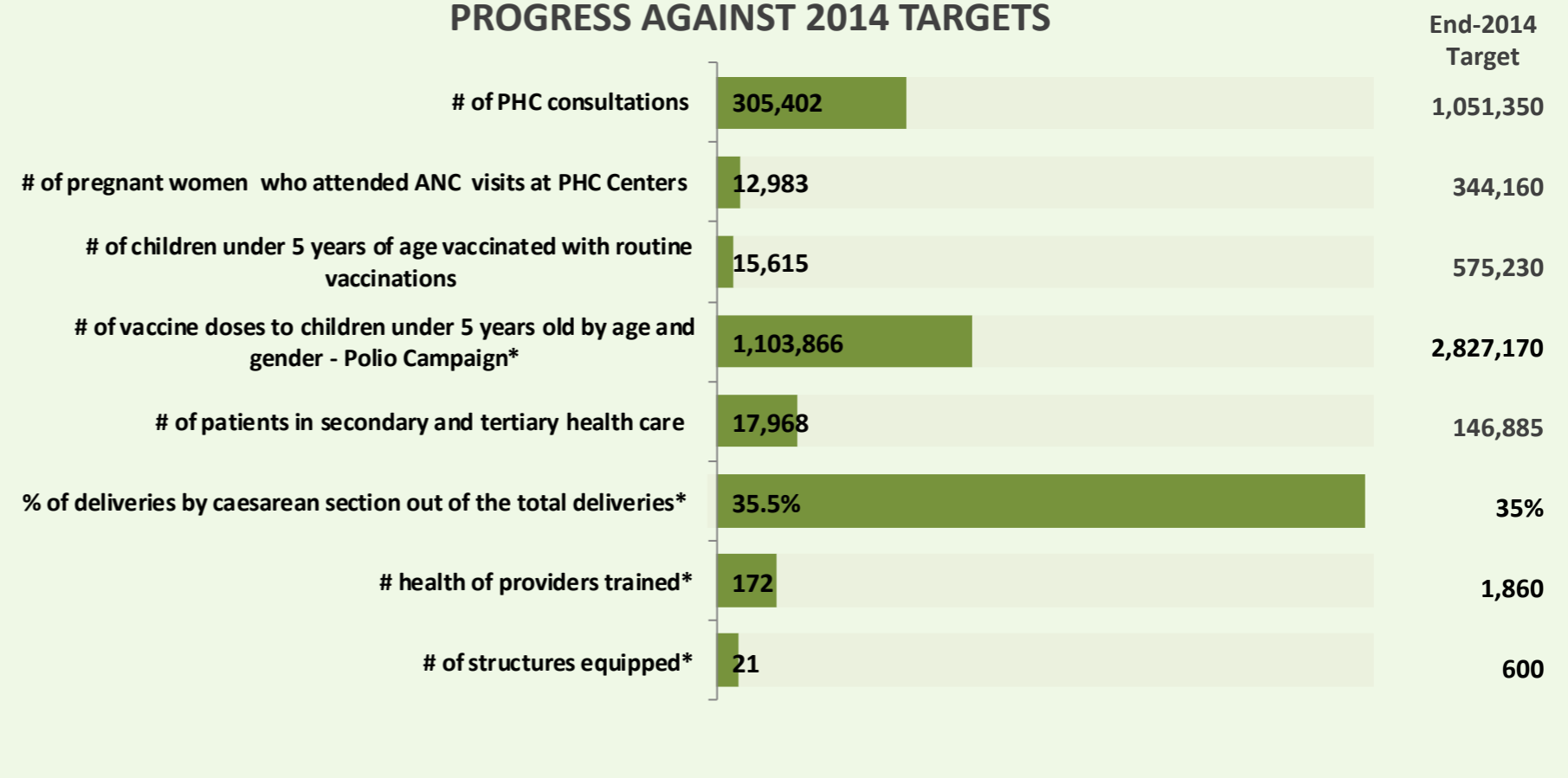
NEEDS ANALYSIS:

A lack of access to healthcare can be a major determinate to beneficiaries receiving the full complementary of healthcare services.

Access can be affected by a number of causes and in part this can be due to a lack of knowledge of what services beneficiaries are entitled to and where to go to receive them.

Greater emphasis must be placed on improving health information campaigns and also on training healthcare workers to ensure beneficiaries receive at least the minimal level of services and of quality care.

PROGRESS AGAINST 2014 TARGETS



*Indicators have been adapted to reporting capacity of sector members to improve analysis and quality of data
Source: figures reported above reflect the information reported to Sector Coordinators by Partners participating in Working Groups

Leading Agencies: WHO - Alissar Rady- radya@who.int - UNHCR - Frank Tyler - tylerf@unhcr.org

Reporting Agencies:

