



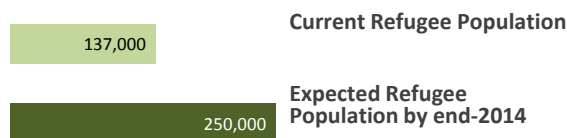
**US\$2.8 million**

**injected into the local economy through vouchers in April**

## HIGHLIGHTS:

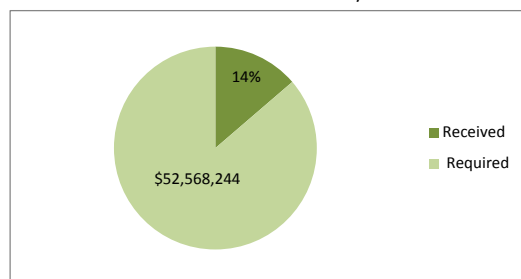
- WFP provided food voucher assistance to 96,290 Syrian refugees in April, including 3,612 Palestinians from Syria, reaching 86 percent of the targeted beneficiaries.
- WFP has opened a fifth distribution site in Egypt following the results of the rapid assessment in Tanta city, in Gharbia Governorate. As a result, approximately 410 new households (1,200 people) will be included in the May distribution cycle.
- In Greater Cairo the majority of beneficiaries were assisted through e-vouchers while paper vouchers were still used for newly registered beneficiaries due to the printing lead time of the e-vouchers. In the rest of the country (Alexandria and Damietta) WFP continued to assist people through paper vouchers. Paper vouchers will also be used for the newly identified beneficiaries in Tanta.
- WFP established a new distribution site in Damietta to resolve security issues and overcrowding which had been occurring in the old location. No security incidents were reported during the distribution.

## REFUGEE POPULATION IN EGYPT



## SECTOR FUNDING STATUS January - December

\* Funds received until May 2014



## NEEDS ANALYSIS:

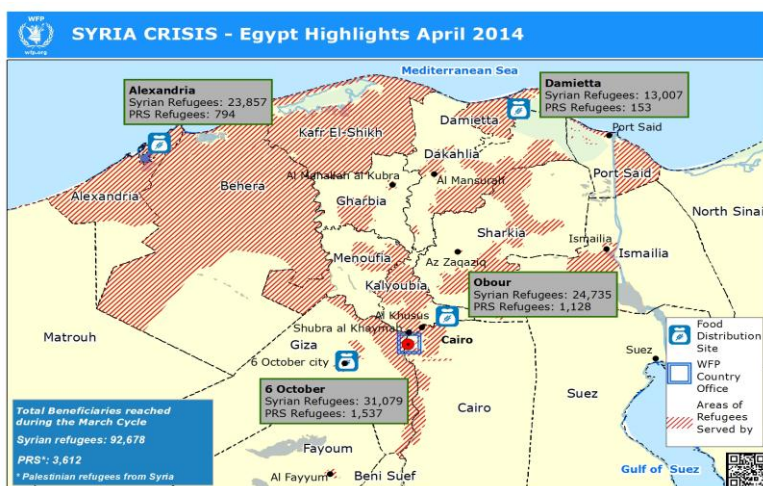
The Joint Assessment for Syrian Refugees in Egypt conducted in September 2013 found that 27 percent of households had insufficient and 46 percent had barely sufficient food availability. High food prices in Egypt continue to make it difficult to access diversified foods and refugee households are resorting to negative coping strategies such as selling assets and purchasing less expensive foods (e.g. no meat or chicken), with 67 percent of households reducing food consumption to two meals per day. Refugees attribute the insufficient or barely sufficient food availability in their households to the lack of livelihood opportunities and high rental costs.

WFP is providing food voucher assistance to registered refugees in poorer neighbourhoods of greater Cairo, Alexandria and Damietta in addition to vulnerable households in surrounding areas identified by UNHCR. UNHCR and partners, together with WFP, are currently preparing joint multi-sector household-level vulnerability assessments to ensure the most vulnerable and food-insecure refugees are targeted and supported in a sustained manner.

Ahead of the vulnerability assessment, WFP conducted a rapid assessment on 14 April for Syrians requesting food assistance in Tanta city in Gharbia governorate, a large settlement approximately 100km north of Cairo. Based on focus group discussions a significant group of vulnerable Syrians was found that were not eligible for food assistance due to geographical targeting. WFP has established a new distribution site in Tanta and is planning to include approximately 410 new households living in the area (1200 people) for the May distribution cycle.

The food assistance is in the form of paper vouchers or e-voucher cards (Greater Cairo only) redeemable at partner supermarkets with a limited validity period and valued at 200 Egyptian pounds (approx. US\$30) per person per month. WFP, together with UNHCR, are working to transition to a OneCard assistance platform in the second quarter of 2014. The OneCard system will support voucher and cash assistance by multiple agencies offering greater flexibility, independence and dignity for beneficiaries.

A Food Security Working Group was established to promote effective coordination through quality information management and collaboration.



## PROGRESS AGAINST TARGETS

