

KEY ACHIEVEMENT OF THE MONTH

At total of **216,527** children have accessed education services this year

HIGHLIGHTS:

The Minister of Education has officially established an 'Education Executive Committee' which has been set up to engage in high level discussions around aid delivery, programming and accountability. It also aims to coordinate with, and align all partner funded projects and programs of RACE. This Executive Committee will be formally chaired by the Minister of Education and will initially take place at a weekly basis.

The plans for the summer programme have reached the last stage of preparation and is currently awaiting final approval from the Minister of Education. These programs are targeted towards out-of-school children or those at risk of dropping out/falling behind, and aims to prepare them for the upcoming school year, beginning October 2014. There are still several non-formal education programmes running which extent past the scope of the summer programme, and will continue to provide support.



Syrian refugee students attend a class in an accelerated learning program at public school in Kamed Al Louz in the Bekaa Valley, Lebanon. The program is designed for Syrian refugees between the ages of 7-15 years old. Classes for approximately 110 students takes place 3 days a week for 3 hours a day with a focus on English, Arabic and math. / UNHCR/S. Baldwin /

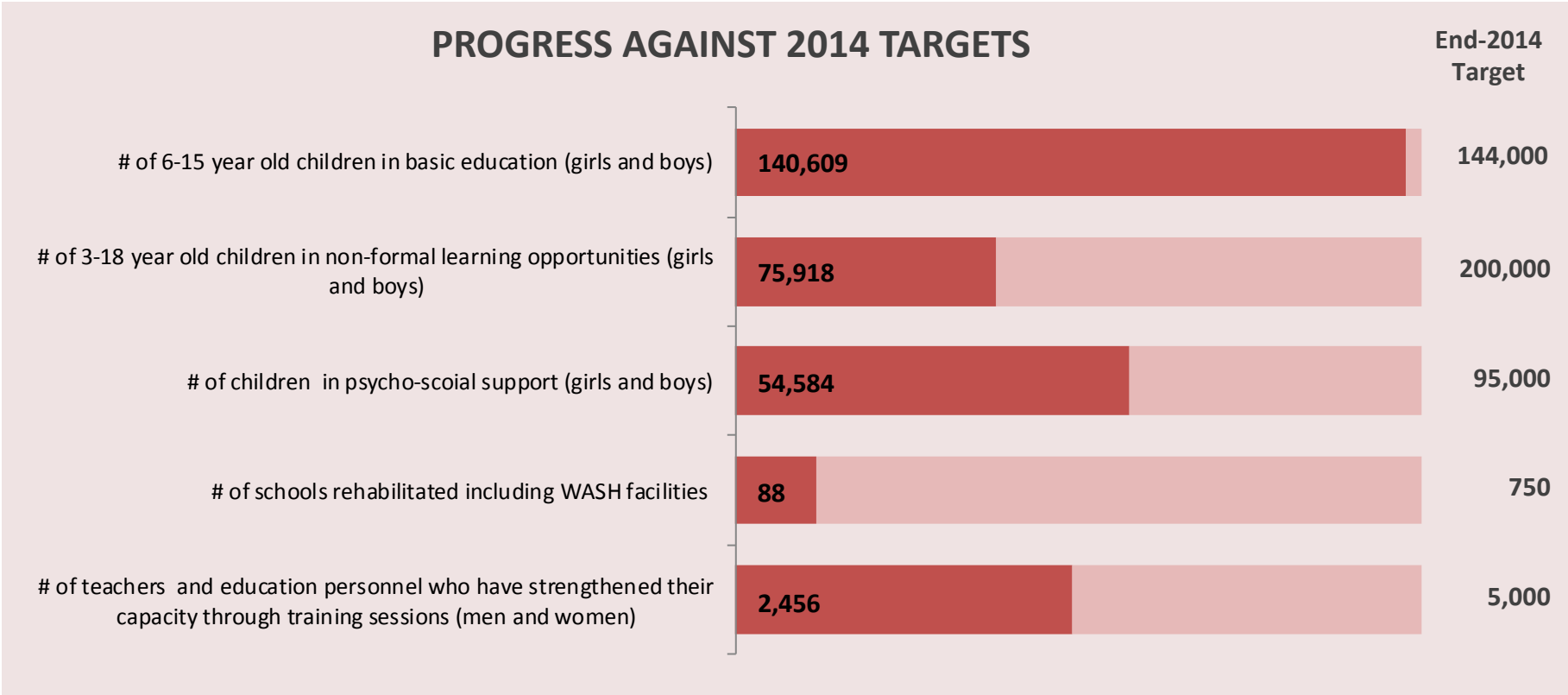
NEEDS ANALYSIS:

Through the support of the partners in the education sector, 140,906 children between the ages of 3-18 were enrolled in formal schools during the 2013/2014 school year. This includes Syrian children, Palestine children from Syria and vulnerable Lebanese children. An additional 69,367 have been enroled in non-formal education programs.

Based on the current registration data there are 459,886 Syrian, 21,000 Palestinian, 7,000 Lebanese returnees and 40,000 vulnerable Lebanese children in need of services. This means that approximately 317,910 children between the ages of 3 and 18 have not accessed any learning opportunities.

Out of the 75,918 children in psycho-social support, 80% are Syrians, 10% are Palestine refugees from Syria and 10% are Lebanese. Out of the 216,527 children reached, 13,805 children are in Remedial Education.

Common barriers to education include; cost of transportation and the cost of tuition fees which are often too high for refugee families with limited resources. Language barriers and safety concerns of Syrian parents contribute to the high drop-out rate among refugee children. But the biggest barrier to schooling is the lack of space in public schools. However 90,000 Syrian refugee children have enrolled in these schools.



Source: figures reported above reflect the information reported to Sector Coordinators by Partners participating in Working Groups

Leading Agencies: UNHCR — UNICEF — Erin Hayba—Hayba@unhcr.org , Simone Vis — svis@unicef.org

