

# **3RP – IM/ M&E**

## **Concepts and Standard Definitions**

13 October 2014

# Concepts

SMART Objectives and Outputs

SMART Objective and Output indicators

**Objectives:** likely/ achieved short and medium-term effects of an intervention's outputs. Outcomes can be *intra-sector*, requiring multiple outputs from one cluster, or *inter-sector* requiring outputs from multiple sectors.

[NB: for the 3RP process Objective = Outcome]

**Outputs** refer to the delivery of goods and/or services to a targeted population.

**Activities** refer to what partners do operationally.

**Inputs** refer to the financial, human and material resources that go into projects.

# Results Structure

## Definitions/ Standardization

## Logframe

### Results

### Resources

## Results Structure

WASH Example Results

Measure of progress/achievement: quantitative and/or qualitative

How/ what/ where information is gathered and how often

Monitoring Framework

## Objectives (Outcomes)

Sustained access to inclusive education for vulnerable school age children and groups affected by the Syria crisis.

#/ % of Syrian refugee children Out of School (5-17 years) (Formal and Non-Formal Education)

MoV: Syrian Refugees - Administrative Data + Need for Assessments to Verify

## Outputs

Increased and improved education infrastructure and learning spaces

# of schools rehabilitated

# of safe learning spaces established

MoV: Partners' Reports

## Activities

School Rehabilitation

## Inputs

- \$200,000  
- 5 Staff  
- 100 construction materials

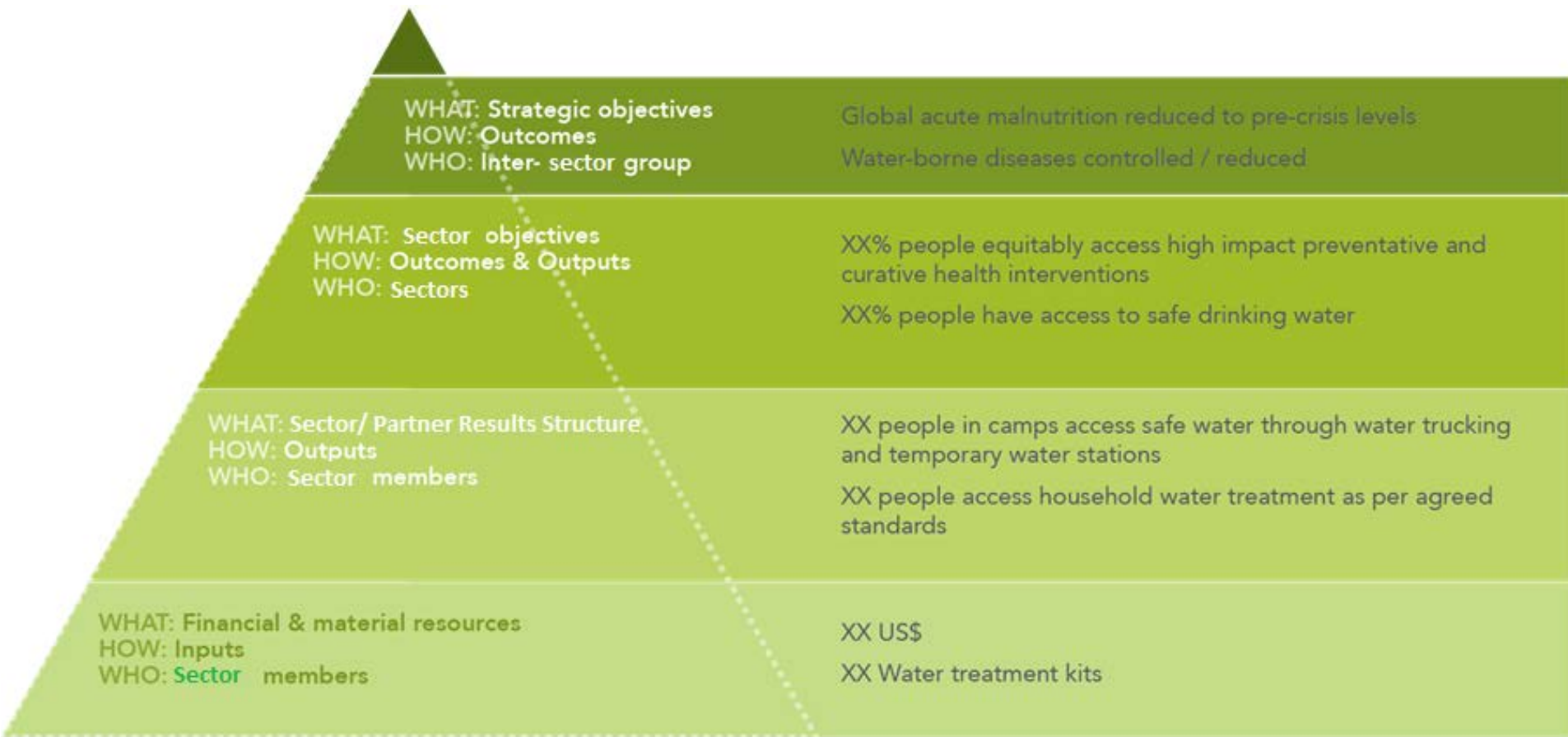
IM systems



**Impact [Strategic Level]**, i.e. % of all school age children attend school OR % of grade x and y children who pass the school exam.

- Higher level than currently being planned/ monitored in the 3RP/ RRP.
- Often inter-sectoral, i.e. 'Reduction in water borne disease' = Health, WASH and Education.

# Indicator Definitions



# Annex C to Date

**Objective one description:** To improve Refugee and host communities' access to comprehensive quality primary health care

**Indicator:** Number of supported primary health care facilities per 10,000 Refugee (Sphere standard)

Output 1.1 (*Refugee component*)

- Detection and management of communicable diseases provided

Output 1.2 (*Resilience component*)

- Strengthened Early Warning and Reporting System (EWARS) and campaign for a National Polio vaccination sustained

Output 1.3(*Refugee component*)

- Non Communicable Diseases (NCD) detection supported

Output 1.4(*Resilience component*)

- Strengthened Community based health and outreach work in impacted urban settings provided, with MOH and CSOs support

**Objective Two description:** Ensure life-saving assistance through essential secondary and tertiary health care

**Indicator :**Number of supported hospitals per 10,000 Refugee (Sphere standard)

Output 2.1 (*Refugee component*)

- Effective access to quality Emergency and Critical care is secured

Output 2.2 (*Resilience component*)

- Provision of capacity building and material support to Public emergency, 2<sup>ry</sup> and 3 hospital care in affected areas.

Output 2.3(*Refugee component*)

- Enhanced access to effective emergency obstetric and neonatal intensive care (CEMONC)

Output 2.4(*Resilience component*)

- Targeted rehabilitation programs for people with disabilities strengthened at selected district levels

# M&E Framework

**Why** - Make results structure/ systems useful/appropriate for:

- Field Operations
- Response Monitoring
- Accountability (to donors and recipients)

## **How**

- SMART Objectives (Outcomes)// Outputs// Activities// Indicators
- Routine Partner Reports
- Assessments/ Studies (particularly for outcome monitoring)
- National data collection systems
- M&E plan for the country level 3RP

# Monitoring and Evaluation Plan

A Monitoring and Evaluation Plan can help to use data strategically:

- Formulate strategic research topics;
- Identify activities to establish baseline/ track progress, and when to conduct them;
- Research agenda to address knowledge gaps, including those identified during the preparation of analysis;
- Manage the monitoring and evaluation responsibilities;
- Synchronize with decision-making opportunities;
- Identify capacity building needs and opportunities.

[illegible]

# Indicators: Definitions/ Standardization

Sector	Indicator Level	Category	Name	Disaggregations	Numerator	Denominator	Description	Units	Means of Verification
WASH	Objective	Sanitation	# individuals with access to adequate, appropriate and acceptable toilet facilities	Syrian Refugees, Palestine Refugees from Syria, Affected Lebanese, Lebanese Returnees	Target population with access to adequate and appropriate toilet facilities	Total population in target group	An adequate, appropriate and acceptable toilet is one that is fully constructed, in working order, of a type and in a location acceptable to intended users. This definition excludes toilets that do not adequately protect users living areas, drinking-water sources and use from contamination, latrines that are full, toilets that are too dirty to use, toilets with broken superstructures, toilets that are inaccessible or located where people are embarrassed to use them etc. Toilets should have functioning and convenient hand washing facilities. Toilets should be clean; i.e. free from faeces inside and around the structure itself, including the squatting plate and not emit strong bad odours. Sector agreed minimums (refer to Sanitation Tech Guide for further details): Emergency (first 2 months) = 1 toilet/50p Ongoing = 1 toilet/15-20p, preferred is 1 toilet/family (6-10p) Schools = 1 toilet per 8 preschool students; 1 toilet per 20 schoolgirls; 1 toilet for 10 female staff; 1 toilet for 30 and 1 urinal for 20 schoolboys; 1 toilet for 15 and 1 urinal for 10 male staff.	Individuals	Assessment (type to depend on target group to be assessed)
Education	Output	Formal and non-formal education	# of Adolescents received a package of Life skills Education	Syrian Refugees, Palestinian Refugees from Syria	# adolescents support to receive Life Skills Education	Total adolescents in target groups	Number of School aged children (Girls & Boys) received school supplies (school bags and stationary)	Children	Partner Reports/ ActivityInfo
Protection	Output	Access to territory-protection-legal District	Syrian Refugees total # provided with individual legal counselling	Syrian Refugees		individuals	# of Syrian refugees, PRS and Lebanese returnees who are provided with individual legal counselling/representation by a paralegal or a lawyer from Agency or NGO.	individuals	Legal counsel records
Shelter	Output		weatherproofing	Affected Lebanese # benefitting from weatherproofing of their shelter	# Affected Lebanese # benefitting from weatherproofing	# Affected Lebanese	(Informal Settlements or Unfinished houses)	Individuals	Partner Reports/ ActivityInfo



# M&E/ IM Tools

## **Planning**

- M&E Framework

## **Partner Reporting**

- Jordan/ Lebanon: ActivityInfo
- Other Countries: Excel 4Ws

## **Inter-Sector Reporting**

- Dashboards
- Infokits
- Maps

# PIN, Targets, Coverage and Gaps

## Needs and Gaps

3RP Total Need

Sector Need

Sector Target

Other  
Plans

Sector  
Gap

Sector Specific Need where the data allows this analysis

Based upon criteria including Vulnerability and Delivery Capacities

# Annex 1: Results Structure – WASH Example

Definitions/ Standardization

Logframe

Results

Resources

Monitoring Framework

Results  
Structure

WASH  
Example  
Results

Objectives  
(Outcomes)

Increased number  
of people who  
have access to  
safe drinking  
water

Outputs

100 households  
received water  
treatment kits

Activities

HH water kits  
Distributed

Inputs

- \$40,000
- 10 Staff
- 100 kits

Shukhran!