



PROTECTION

317,841 Syrian refugees registered in 2014

2,633 Palestine refugees from Syria recorded in 2014

24,276 persons provided with individual legal counselling

145,096 persons benefitting from empowerment activities

6,018 Syrian refugees submitted for resettlement or HAP



CHILD PROTECTION and SGBV RESPONSE

335,651 boys and girls benefitting from psychosocial support

4,472 boys and girls assisted with specialized services

126,406 caregivers benefitting from psychosocial support

2,365 service providers trained on SGBV prevention/response

22,834 women and girls received dignity kits



BASIC NEEDS / NFI / CRI

596,350 persons received unconditional winter cash grants of vouchers to purchase fuel (for one month)

50,420 newcomers received unconditional cash grants or vouchers to purchase fuel (for one month)

389,425 persons who received Core Relief Items (CRI) (non winter)



SHELTER

332,472 persons assisted with shelter interventions

106,966 persons received cash for shelter

68,470 individuals benefitted from weatherproofing of informal settlements

87,468 individuals benefitted from weatherproofing of buildings

36,168 individuals benefitted from rehabilitation of shelters



WASH

156,027 individuals provided with storage containers

880,121 persons provided with improved water supply at adequate level of service

146,232 persons benefitted from improved sanitation facilities

401,709 persons have experienced a hygiene promotion session



PUBLIC HEALTH

857,433 primary health care consultations in 2014

31,822 pregnant women attended ANC visits in PHC centres

291,660 children (<5) vaccinated with routine vaccinations

1,467,688 polio vaccine doses to children under 5 years old

43,432 patients in secondary and tertiary health care



EDUCATION

6,105 6 -15 year old children enrolled in formal education

88,151 boys and girls in non-formal learning opportunities

54,724 children benefitting from psychosocial support activities in education settings

2,543 teachers and education personnel trained

99 schools were rehabilitated (including WASH facilities)



SOCIAL COHESION AND LIVELIHOODS

843 Change agents trained and actively promoting conflict prevention and social cohesion

65 Communities with active conflict mitigation or participatory mechanisms

539 Communities benefitting from **246** completed CSPs

4,889 persons benefitting from income generating opportunities

13,223 persons receiving vocational training and life-skills support



FOOD SECURITY AND AGRICULTURE

204 million USD equivalent of e-cards, vouchers or food distributed and redeemed in 2014

72% of planned population benefitted from food assistance

78% of assisted individuals with acceptable food consumption score (>35.5)

760,740 animals vaccinated against trans boundary diseases



KEY FACT OF THE MONTH

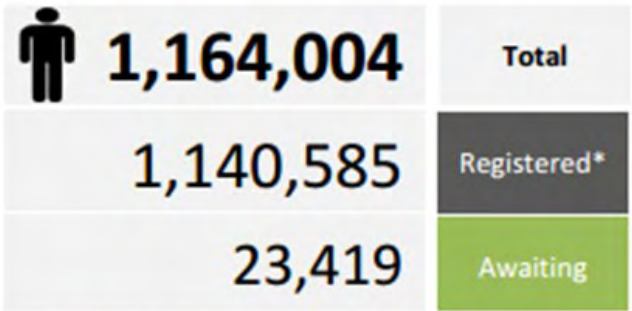
Participation in empowerment activities already exceeded the end-2014 target

HIGHLIGHTS:

31,050 Syrian refugees were registered in September, and 24,250 requested appointments. This was the lowest number of newly registered refugees since the beginning of the year and a 40 % reduction compared to new registrations in the first few months of 2014. The average waiting period countrywide increased by nine days to 31 days. The increase of the waiting period was due to resources being re-allocated to the verification process. By the end of September, 1,185,378 Syrian refugees were registered or awaiting registration. The number of PRS recorded with UNRWA stabilized at almost 43,400.

In September, legal awareness sessions were provided to approximately 9,000 individuals. This constituted a 30% increase over the previous month, partly due to intensification of legal awareness regarding a circular facilitating regularization of stay in Lebanon. The total number of refugees that have participated in legal awareness sessions in 2014 stands at over 92,367 persons.

UNHCR REGISTRATION FIGURES



* Reduction on total number registered is due to routine data cleanup and verification.

With continued high needs for individual legal counseling, 2,792 individuals benefited from legal counseling, in particular in respect to obtainment of civil or legal stay documentation. Since the beginning of the year, over 24,000 refugees have been provided individual legal counseling in order to access their rights.

In September, 13,365 individuals, 65% of whom were female, benefited from empowerment activities, primarily group information

sessions to increase awareness of available services and assistance. Since the beginning of the year, over 145,000 persons have benefited from these types of activities, already exceeding the end-2014 target.

At the field level and in Beirut, protection partners continued to monitor the effects of the border restrictions and the gratis regularization process through General Security.

In September, 1,505 persons were submitted for resettlement or humanitarian admission, bringing the total number of persons submitted for relocation in a third country to over 6,000 in 2014.

NEEDS ANALYSIS:

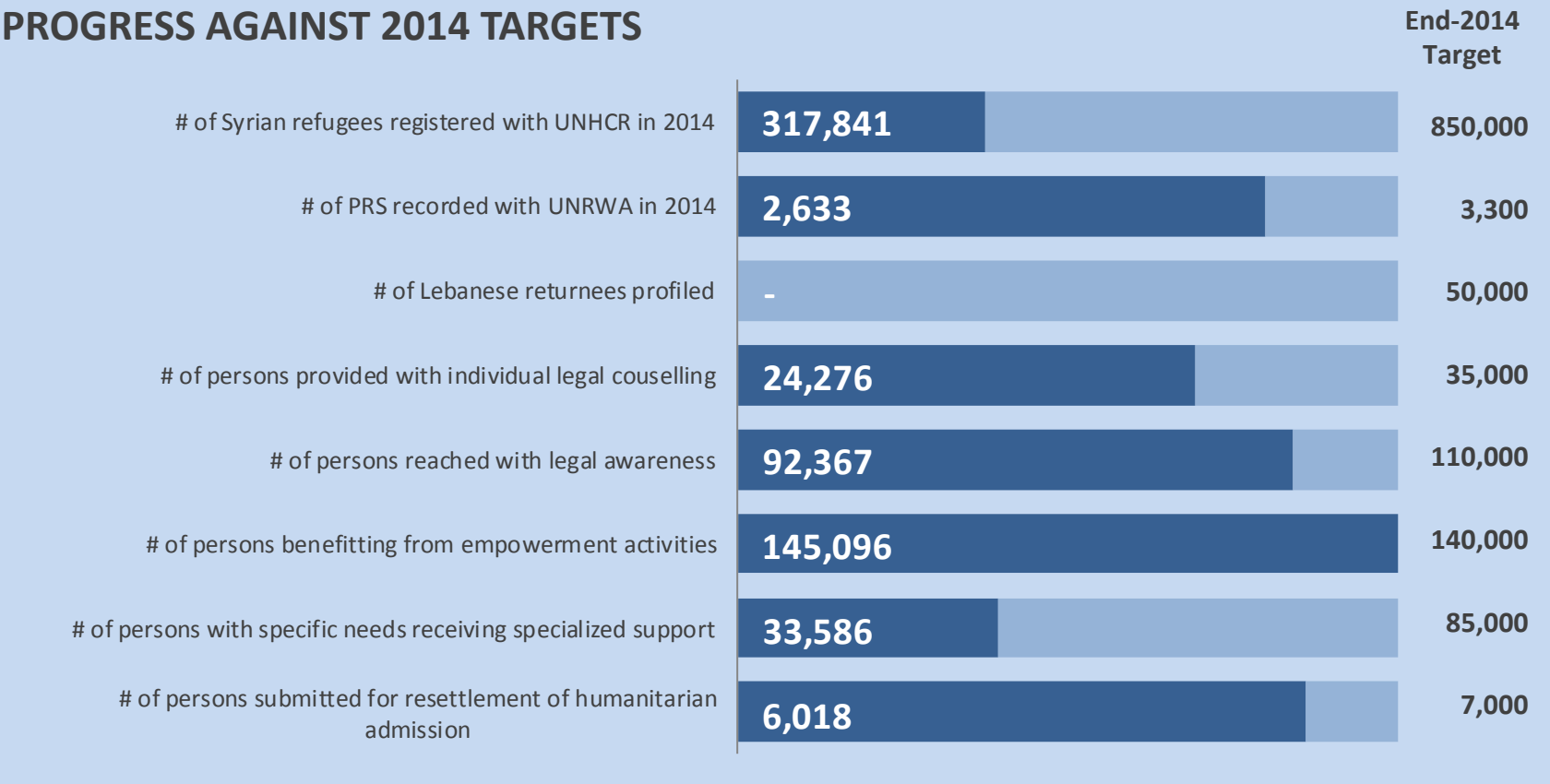
While targeting new registrants, registration will focus on the process of renewal/verification in order to update data and foster accuracy. Efforts to improve access to registration will continue through various modalities, including transport support to registration facilities.

The efforts of legal partners to intensify legal awareness sessions and individual legal counseling will ensure that refugees benefit from the gratis regularization initiative.

Systematic protection monitoring by sector partners will contribute to increased analysis of common protection issues and trends countrywide. Particular attention will be devoted to the growing eviction trends affecting vulnerable refugee families throughout the country. Monitoring of eviction trends has been reinforced through improved information collection tools across the country, and the protection sector is coordinating with the shelter sector, particularly through field-based Eviction Committees/Technical Groups. Through these mechanisms, results of field strategies for preventive interventions, through mediation or legal advice, are decided. In coordination with the shelter sector, criteria are developed for prioritization in allocation of shelter assistance to families with specific needs as well as those who have been forcibly evicted.

Following the recent restrictions on entry into Lebanon, intensified border monitoring and border interventions will contribute to persons seeking international protection having access to territory.

PROGRESS AGAINST 2014 TARGETS



Source: figures reported above reflect the information reported to Sector Coordinators by Partners participating in Working Groups

Leading Agencies: UNHCR - David Welin—welin@unhcr.org
Reporting Agencies:





HIGHLIGHTS:

The CPIEWG in Tyre organized a participatory assessment with refugees and Lebanese children, focusing on protection risks faced by children living in the South. General findings from the assessment reveal discrimination, child labour, exploitation, limited education opportunities and inability to afford basic needs as major protection concerns/problems faced by children.

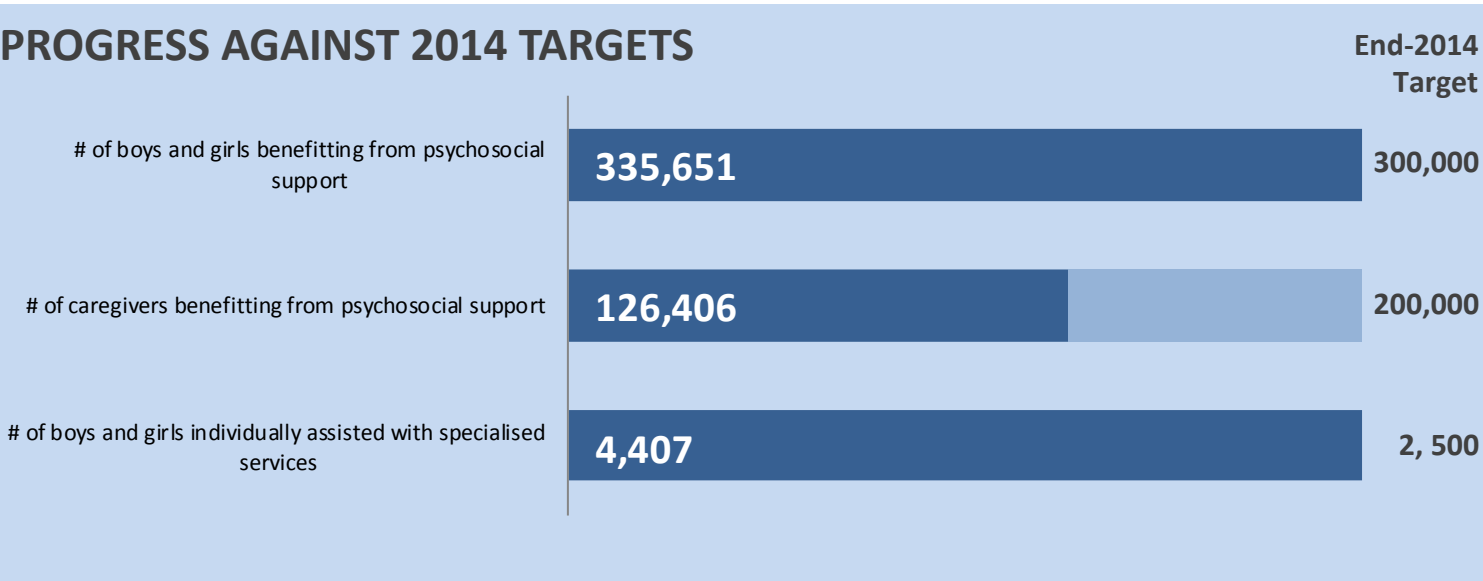
In Quobayat, the youth committee in Kherbet Daud and Wadi Khaled organised four information sessions on “self-protection” and SGBV prevention, reaching out to 117 refugees and Lebanese children.

Since child labour is an increasing concern, it has been integrated in the national coaching project to help case management agencies work on the issue and mitigate exposure to risks of children involved in child labour.

Basic CP trainings took place for specialized child protection ROVs in Mount Lebanon, Tripoli and South. The training aimed to introduce CP ROVs to basic concepts in child protection in emergencies. Additional follow-up and support will need to be done to improve the skills of specialized ROVs.

NEEDS ANALYSIS

Thematic child protection issues are progressively addressed through the provision of case management but also through psycho-social support services provided to children and their care givers. At the national level, ongoing advocacy is being made with the Ministry of Labour and ILO in particular to implement the national plan against child labour and ensure particular concerns of refugee children are considered. Child protection is linking with the SGBV task force to address child marriage: a mapping of initiatives at national and local level has been undertaken to identify best practices and gaps that might be existing.



Source: Figures reported above reflect the information reported to Sector Coordinators by Partners participating in Working Groups



HIGHLIGHTS:

Akkar: a new programme will start and will include some innovative components, such as the establishment of a Rapid Response Team and mobile teams. The programme will have a special focus on adolescents.

Initiatives targeting men and boys are being progressively reinforced through the planned expansion of Men’s Centers, the collaboration with the Global MenEngage network and continued programming on engaging men and boys in prevention.

Training of health facilities on Clinical Management of Rape continue regularly. First post training assessments of facilities trained have started in Akkar, Mount Lebanon and the South.

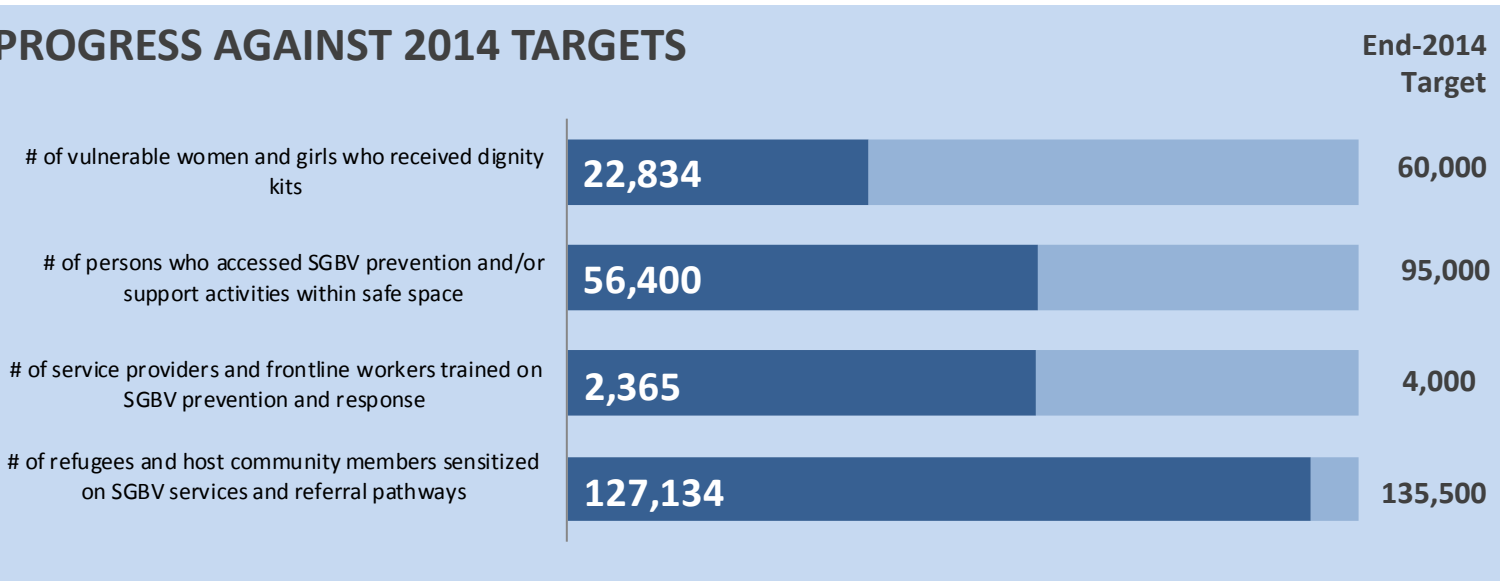
Programmatic gaps identified in the mountain and coastal areas of Akkar will be covered through establishment of women peer support groups, in-center and outreach awareness raising activities and establishment of safe spaces (including GBV prevention, Case Management, Legal and Psychological services, Life skills and skills building activities).

In addition, some 5,099 women and girls, men and boys accessed areas/facilities to safely seek support and/or disclose violence and to access case management, medical and legal services as well as individual and group emotional support and socio-economic empowerment activities.

NEEDS ANALYSIS:

Recent regional and national reports on the situation of women and girls and youth confirm that domestic violence, sexual harassment and exploitation and forced/early marriage remain the main protection concerns for women and girls. In order to address early marriage more systematically and in a comprehensive manner, the SGBV Task Force in Lebanon has launched different initiatives:

A compilation of tools developed in Lebanon has been produced and shared with field SGBV WG. Mapping on-going activities to prevent and respond to early marriage has also been produced and shared. Tripoli, Akkar and South SGBV WG have finalized it so far.



Source: Figures reported above reflect the information reported to Sector Coordinators by Partners participating in Working Groups





KEY ACHIEVEMENT OF THE MONTH

912,520 refugees and vulnerable host members received food assistance.

HIGHLIGHTS:

In September, WFP and its cooperating partners reached some 855,570 Syrian refugees with the E-card. 17,501 newly arrived refugees were assisted with food parcels. Through the E-card, WFP injected an additional US\$25.6 million into the Lebanese economy. Other food security sector partners reached some 39,449 vulnerable individuals among the four different caseloads, in the process injecting a further US\$1.26 million into the Lebanese economy. The e-card remains the modality for delivering food assistance to the refugees. The sporadic nature of hostilities in and around Aarsal meant that the e-card was one of the most reliable and consistently effective ways of reaching beneficiaries with humanitarian assistance. Otherwise, frequent accessibility challenges were interrupting the delivery of other forms of aid.

The FAO, in partnership with REACH, initiated a country-wide food security and livelihood assessment. This assessment is mainly focused on host communities but will include some refugees residing in the host communities as well. There were no changes to the number of livestock reached during the joint FAO/Ministry of Agriculture national livestock vaccination programme.



WFP e-card programme reaches some 855,570 Syrian refugees

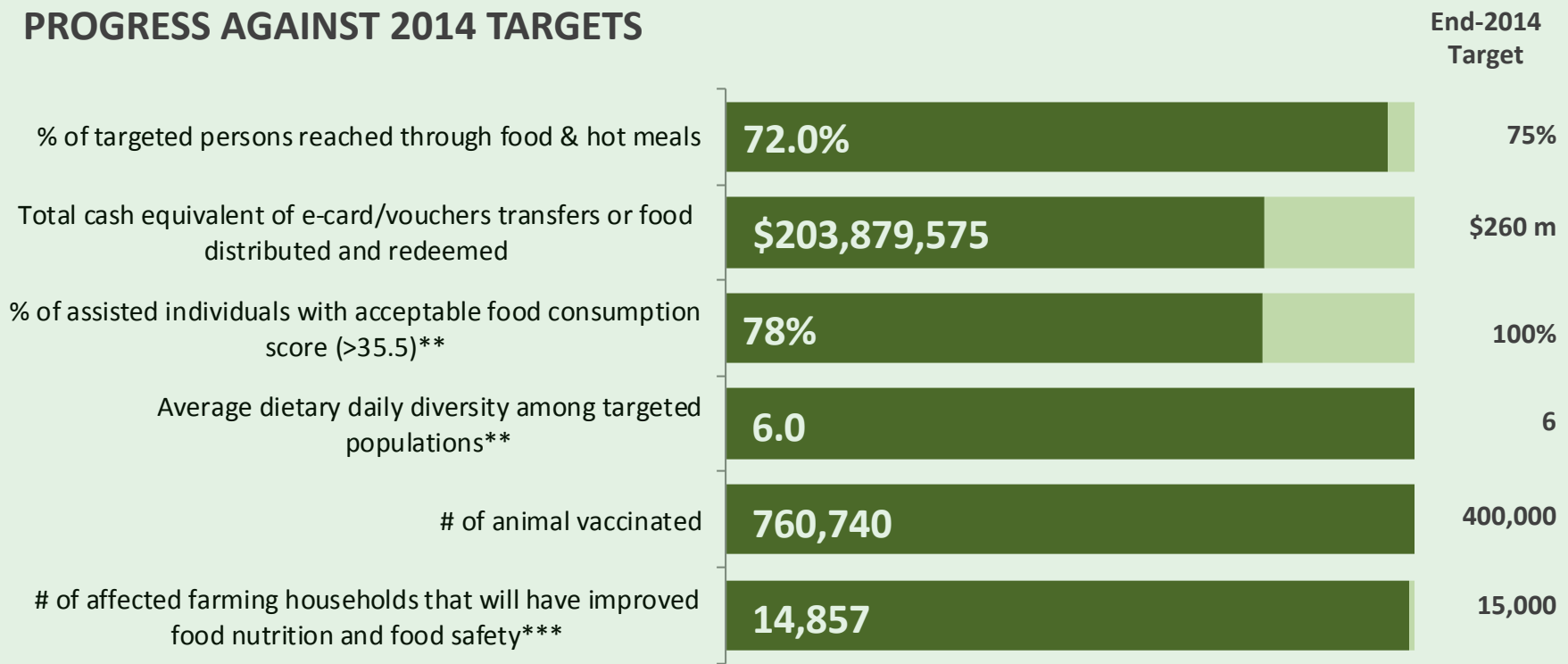
NEEDS ANALYSIS:

Food assistance is still crucial to sustain vulnerable groups in the country. This is evidenced by the percentage of households with an improvement of food consumption scores to some 76% , compared to the pre-assistance baseline of 49%.

Plans for October include reaching out to some 1,125,000 Syrian refugees. WFP and MoSA are set to start delivering food assistance to some 27,700 extremely poor Lebanese individuals registered under the National Poverty Targeting Programme (NPTP).

In October, the Food Security sector will finalise the strategic plan for the 2015-16 3RP. This strategy will be based on the sustainability of current targeting and the incorporation of more resilience/stabilisation interventions to bring equity among the different needy population groups. The government of Lebanon is expected to play a more prominent role in the 2015-16 response.

PROGRESS AGAINST 2014 TARGETS



** Indicators are reported on a quarterly basis - *** Target changed and achievements reported since July 2014.

Source: figures reported above reflect the information reported to Sector Coordinators by Partners participating in Working Groups

Leading Agency: WFP - Naison CHAKATVA - naison.chakatsva@wfp.org

Reporting Agencies:





KEY ACHIEVEMENT OF THE MONTH

10,766 of the most vulnerable families received
1,841,700 USD cash assistance.

HIGHLIGHTS:

Distributed a total of around 1,841,700 USD as cash assistance for multiple purposes to 10,766 of the most socio-economically vulnerable families.

Distributed newcomer NFI kits to 27,155 persons (5,431 families). A standard kit consists of one blanket and one mattress per person (5 blankets and 5 mattresses per family/kit on average), one kitchen set and one hygiene kit per family, and a baby kit for each child under the age of 2 years.



Also this winter blankets, stoves and cash for winter will be distributed to those in need

NEEDS ANALYSIS:

The sector will continue its strategic shift toward broader implementation of the multi-sector cash transfer assistance to enable the most economically vulnerable households to meet their basic needs in a safe and dignified manner.

The targeting methodology to identify the most economically vulnerable is being further refined. The Targeting Task Force will pilot a Household Profiling Questionnaire in order to enhance targeting for cash assistance. The Cash Working Group will produce standards of practice for profiling, with careful consideration of protection concerns.

The winterization programme will begin to assist households according to economic vulnerability and exposure to cold as outlined in the inter-agency strategy. A combination of in-kind items (blankets, stoves, clothes), vouchers and cash transfers will be provided to support beneficiaries to survive winter without adverse effects or increased negative coping mechanisms to meet heightened basic needs.

As the numbers of newcomers are decreasing, an annex to the SOPs will clarify that the core relief items will also be distributed to support households with auxiliary needs identified in the field. Such households could be in need of CRIs because of internal displacement, during which families could not carry items with them. The assistance could also meet gaps in coverage for households not assessed and assisted within the newcomer eligibility period. Finally, some items may need to be replaced after prolonged use.



Source: figures reported above reflect the information reported to Sector Coordinators by Partners participating in Working Groups

Leading Agencies: UNHCR - Chadi Ghajar—Ghajar@unhcr.org
Reporting agencies:

KEY FACT

No blanket winterization of substandard shelters due to funding shortages.

HIGHLIGHTS:

By the end of September 2014, all agencies reported shelter assistance reaching 332,472 individuals this year. This includes 242,221 Syrians, 56,139 Palestine Refugees from Syria, 2,213 Lebanese Returnees, and 31,899 Affected Lebanese.

Weather proofing activities are still boosted in preparation for the upcoming winter. 21,428 refugees, including 643 new arrivals, benefited from the distribution of 4,089 weather proofing kits in informal settlements across the country. 4,101 refugees also received 759 sealing off kits to be installed in their substandard shelters.

Rehabilitation of houses remains a strategic shelter intervention increasing in importance as winter approaches. Through this activity, 3,285 refugees were provided with rehabilitated shelters by agencies across the country.



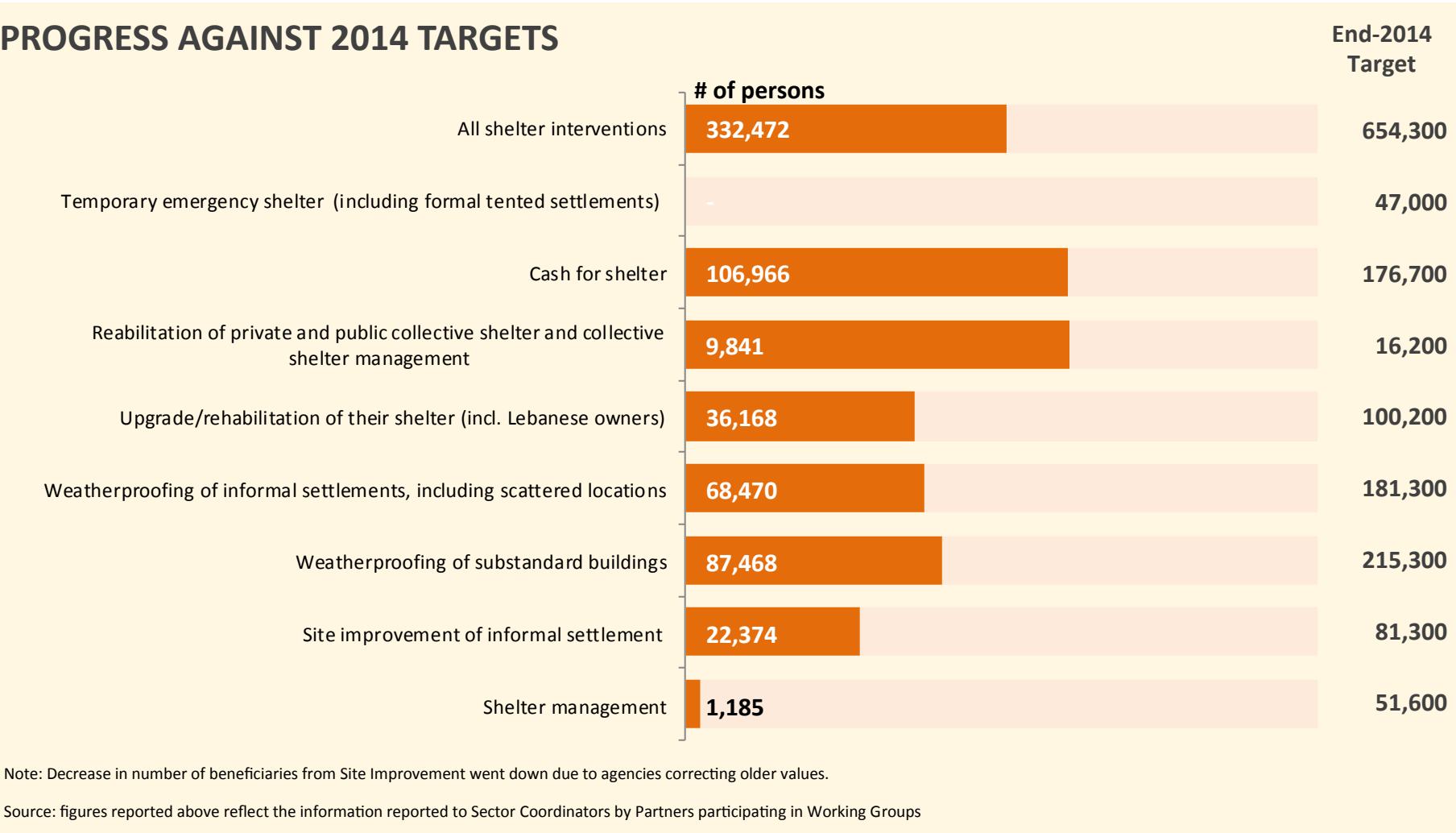
Shelter partners are working in informal settlement to improve shelter conditions before the winter hits

NEEDS ANALYSIS:

With the continuous flow of refugees towards lower quality affordable shelters, the expanding refugee settlements in and around the towns and villages are hardly perceived as temporary anymore. The bearing capacity of host communities is shrinking, as manifested by tensions over basic amenities and security.

Pushed to the limits, the available and “affordable” shelter capacity is further squeezed by reluctance of local communities to provide or allow access and use of large buildings as collective shelters, hence the decrease in CS rehabilitations. Moreover, the growing tensions between the refugees and the host communities invite for integrated activities that target both communities and render them more sustainable and accommodating to refugees.

PROGRESS AGAINST 2014 TARGETS



Leading Agencies: UNHCR—Mohamad Mukalled mukalled@unhcr.org;
MoSA Ahmad Kassem - Kassema@unhcr.org

Reporting Agencies:



KEY FACT

65 reproductive health (RH) kits, which include family planning methods and rape treatment, were distributed

HIGHLIGHTS:

During the month of September, two hospitals received health facility based training on Clinical Management of Rape in Bekaa and South regions. So far, a total of 30 health facilities all over Lebanon have been trained and equipped to receive survivors of rape. Moreover, 200,000 copies of the pregnancy card were printed and distributed among pregnant women from both the Syrian refugees and the Lebanese communities at the level of health facilities.

The reproductive health sub working group is compiling information on all RH awareness activities and material being implemented by different actors in order to develop a harmonized set of RH Health Education material at a later stage.

MOPH and UNFPA will be providing RH supplies and medicines (family planning methods, STI treatment, supplements and vitamins) to PHCCs part of the MOPH network as well as to other centres outside of the network, offering medical services to refugees and supported by different humanitarian actors.

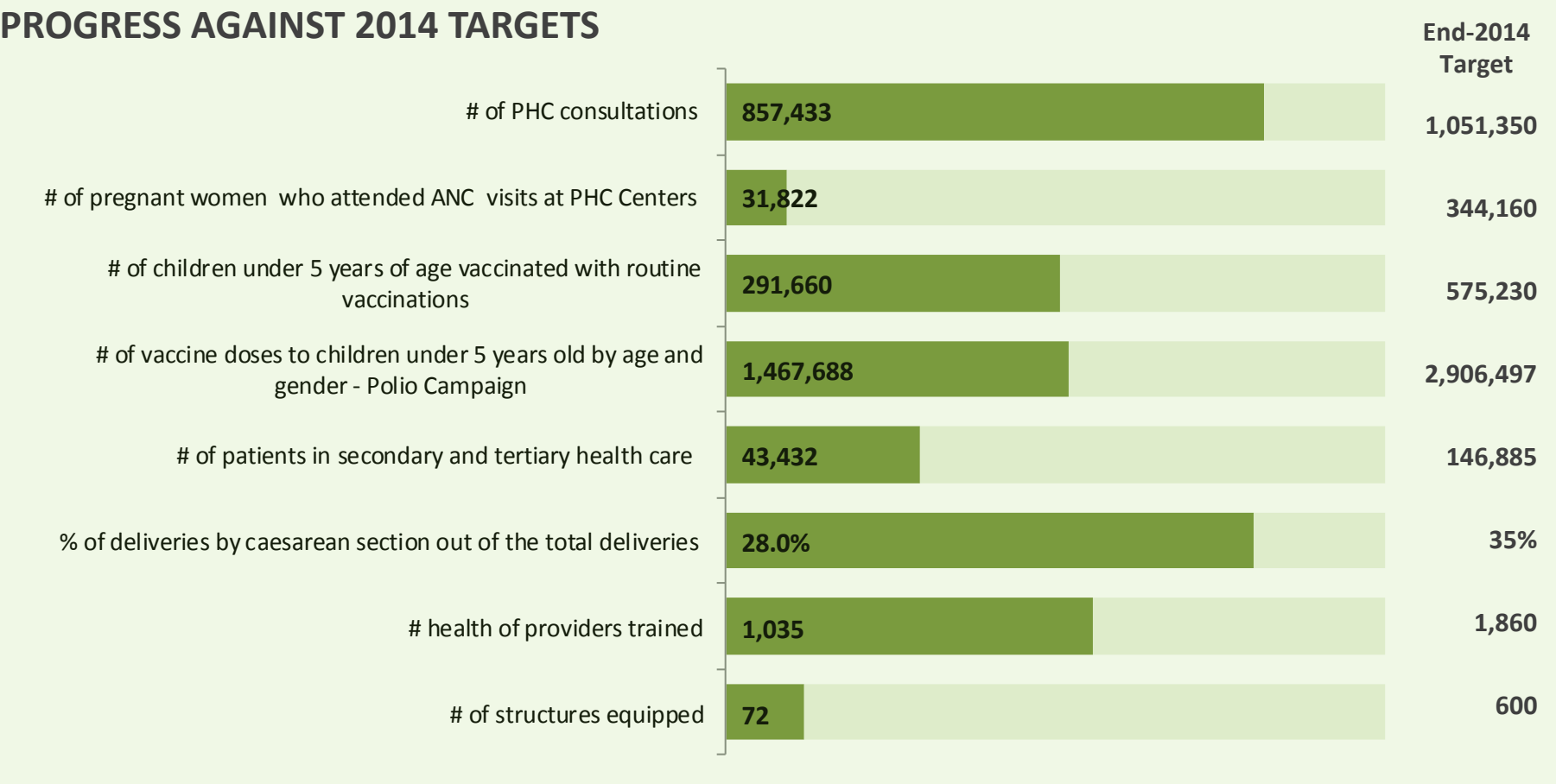


NEEDS ANALYSIS:

In Lebanon, since the beginning of the influx, health emergency actors involved in disaster relief started offering a wide range of health and RH interventions and services to the affected population. Yet there seem to be serious challenges and bottlenecks in reaching significant improvement in the overall health outcome in general and RH in particular. Syrian women refugees still experience various indicators of poor RH, including: unsatisfactory gynecologic conditions, pregnancy and delivery complications and poor birth outcomes. Findings demonstrated the need for better targeting of RH services in refugee settings.

Currently, MOPH and UNFPA will make RH supplies and medicines available to all centers receiving Syrian refugees. In addition, UNFPA, in coordination with all partners subscribing to the RH sub-working group and in close partnership with the Ministry of Public Health, will launch a situation analysis which aims at giving an overview about the current RH situation in the humanitarian context in Lebanon. The assessment will be conducted at both the community and health facility levels to understand the needs of the affected population. The results of the situation analysis will assist the government and humanitarian actors working in RH in developing appropriate programs and interventions targeting the affected population.

PROGRESS AGAINST 2014 TARGETS



Source: figures reported above reflect the information reported to Sector Coordinators by Partners participating in Working Groups

Leading Agencies: WHO - Alissar Rady- radya@who.int - UNHCR - Michael Woodman—woodman@unhcr.org
Reporting Agencies:

KEY FACT OF THE MONTH

The 2014/15 school year started despite pending enrollment of Syrian refugees

HIGHLIGHTS:

In September, the 2014-15 school year commenced in Lebanon. A total of 6,105 children have enrolled, the majority being PRS and PRL enrolled in UNRWA schools and a handful of affected Lebanese. Syrian refugee children have not enrolled yet and are awaiting decisions from the Ministry of Education and Higher Education (MEHE).

The Ministry has announced the possibility to expand access to the first shift to Syrian refugee children, depending on funding commitment from the UN and the donor community. In addition, 57,000 Syrian refugee children will have access to the second shift in public schools.

An executive committee is working with MEHE on the implementation of Reaching All Children with Education (RACE) throughout the country. This plan includes how to increase access of quality educational programs both through formal and non-formal education to vulnerable Lebanese and refugee children.



Syrian refugees cannot wait to go back to school

NEEDS ANALYSIS:

Due to the new school year, the indicator for formal education has been reset to zero with new enrollments starting this month, resulting in a low number of children enrolled in formal education. In addition, to avoid the difficulties and constraints that the Ministry of Education and Higher Education (MEHE) faced last year regarding the limited capacity to accommodate Lebanese and refugee students for year 2013-14, MEHE decided to regularize 2014-15 school enrollment. To date, MEHE has issued 2 circulars to phase the enrollment. A 3rd circular is expected to be issued soon in order to allow Syrian refugee children and other nationalities affected by the crisis to enroll in public schools.

Non-formal education programs have continued across the country, reaching to 88,150. These programs are aimed at expanding access to education for out-of-school children and preparing them to enroll in formal education at a later date. Even with these programs expanding, more than 300,000 school-aged children in Lebanon have not accessed any form of educational program this year.

Nearly 100 schools have been rehabilitated, including the WASH facilities of these schools, to enhance the capacity of overburdened schools. More than 2,500 teachers have also been trained to strengthen their capacity as well. Psychosocial support programs continue to target children that have faced difficult and distressful moments, currently reaching nearly 55,000 children.

PROGRESS AGAINST 2014 TARGETS



Source: figures reported above reflect the information reported to Sector Coordinators by Partners participating in Working Groups

Leading Agencies: UNHCR — UNICEF — Erin Hayba—Hayba@unhcr.org , Simone Vis — svis@unicef.org

ACHIEVEMENT

The WASH workshop was held to plan for 2015-2016 and for winterization.

HIGHLIGHTS:

BML: 193 students (23% of which are Syrian) have benefited from access to safe water and toilets after WASH works were completed. The pilot project proved to be successful in facilitating future MEHE approval. Construction works on 6 water reservoirs in Iklim Al Kharoub are ahead of schedule, and progress is at 75%. Project is expected to benefit 50,000 persons (20% of which are refugees) once completed in early November 2014.

SOUTH: 430 refugees benefited from the distribution of 194 jerry cans in IS, 380 refugees from 70 garbage bins in ISs, 275 refugees from 54 water tanks (1000L) in ISs. 480 refugees benefited from the desludging of 32 septic pits in ISs. 270 families benefited from the 17 HP sessions on utilization, maintenance and cleaning.

BEKAA: Cases of suspected Hepatitis A were reported in Bekaa, Aarsal, Majdel Anjar and Saadnayel. These are being followed to determine if water supply or hygiene are the source of the cases. Guidance on outbreak criteria has been lacking from Health, MoPH and WHO, so there is difficulty verifying cases. Coordination was a high priority in September with partners who lack funding, releasing areas for coverage to other partners who recently received funding.

NORTH: In the North, CISP has contributed 1.8 kms of completed network to a water supply project, the purchase of equipment for pumping station done and the delivery of a solid waste truck to Ardeh municipality, which benefited 497 Syrians and 3160 host community members.



Sanitation facilities in some informal settlements are still below standards

NEEDS ANALYSIS:

The sector finalized the water sector response plan for 2015 in coordination with partners.

The main concern for the sector, along with the reduction in funding for the next year, highlights the need for more systematic cost-benefit analysis approach to interventions and prioritization in addition to better coordination planning for the next 2 years. The AWD plan ongoing with the health sector remains a priority along with donor mapping and winterization.

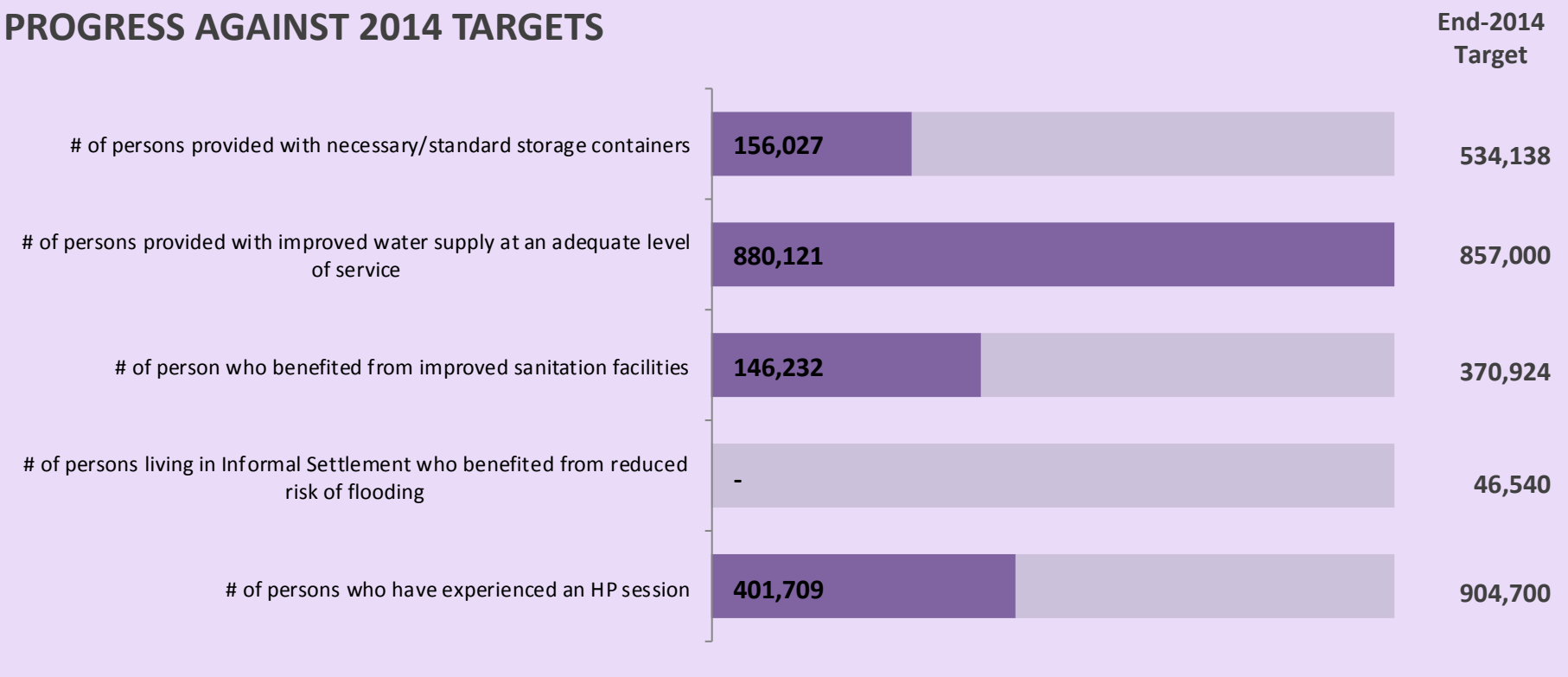
We are ensuring maintained coordination with MoEW in order have a good phase out for the implemented projects.

Due to security issues, tensions are increasing between host communities and refugees. We are coordinating with our partners to reduce this tension.

Some partners are focusing on involving the refugees in the simple construction/installation works. This has been the main theme of activities being implemented to increase the sense of ownership of the refugees for provided facilities and to increase the sustainability of the interventions.

Municipalities’ capacities should be strengthened, and they should be encouraged to coordinate with organizing committees on waste collection. A long term strategy in conjunction with international donors and government could encourage an effective solid waste management system.

PROGRESS AGAINST 2014 TARGETS



Source: figures reported above reflect the information reported to Sector Coordinators by Partners participating in Working Groups

Leading Agencies: Ross Tomlinson—UNHCR—TOMLINISO@unhcr.org—UNICEF- David Adams—dadams@unicef.org - Reporting Agencies:



KEY ACHIEVEMENTS OF THE MONTH
824 beneficiaries of livelihoods activities; 4 CSPs completed

HIGHLIGHTS:

824 new individuals benefitted from livelihoods activities in the month of September. This confirms the increase in the number of beneficiaries of livelihoods activities in the recent months, particularly beneficiaries of income-generating activities such as Cash for Work (432 new beneficiaries in September, a 50% rise since August and 10 times more than in July). Accompanying this trend, the sector has now finalized Standard Operating Procedures for Cash for Work activities to be adhered to by all partners. 392 individuals gained new skills through vocational training, mostly in Bekaa (196 individuals).

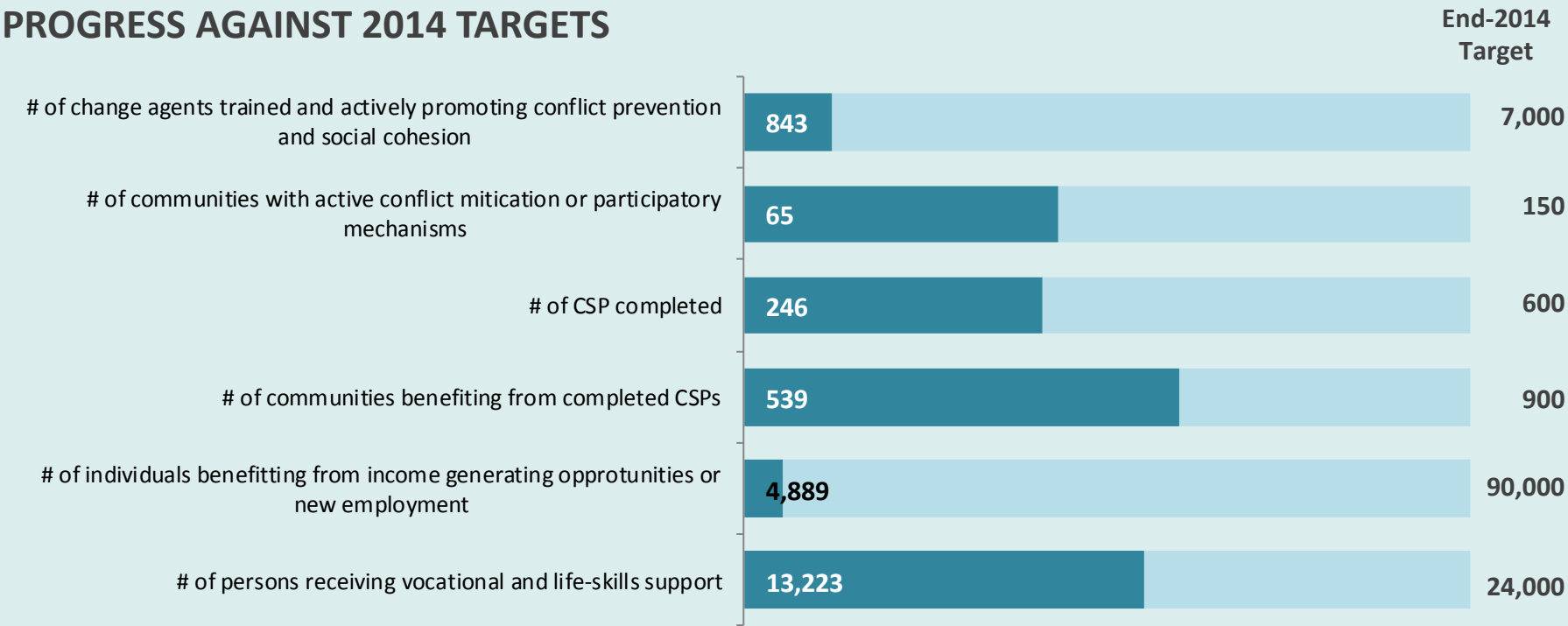
On the social cohesion side, 2 new CSPs were completed, in the South and in Tripoli +5 area. In addition, the first two of 29 ongoing municipal support projects were completed in the South (Hasbaya and Saida). 10 journalists, including 4 Syrian journalists, participated in the publication of the 5th edition of UNDP-joined peacebuilding supplement distributed on 24 September with the daily editions of Anahar and Assafir newspaper and for the first time in English with The Daily Star.

NEEDS ANALYSIS:

International Alert and the research centre Integrity published a first study on assessing institutional capacity for conflict sensitivity, which focused on the health sector but bears relevant consideration for the overall response's effort to promote social cohesion. The key findings of the study confirm that competition around access to accomodation, basic services (particularly water and sanitation), and employment remain the key drivers of tensions in Lebanon. In the health sector, the study found that tensions primarily revolve around negative perceptions related to fertility rate, lack of hygiene and fears that refugees would spread communicable diseases, and frustration related to the perception that the international assistance allows refugees to be unfairly privileged in their access to cheaper healthcare. This leads to increasing segregation of Lebanese and Syrian patients in primary health care centres, with host communities avoiding facilities used by refugees.

The report underlines that while there is a widespread belief that tensions can only be mitigated by committing extra resources, there is considerable room for more conflict sensitive practices in the delivery of services, notably through better information and communication to dismiss negative perceptions and prejudices.

PROGRESS AGAINST 2014 TARGETS



Source: figures reported above reflect the information reported to Sector Coordinators by Partners participating in Working Groups



UNDP packaging centre

Leading Agencies: UNDP Afke Bootsman—afke.bootsman@undp-lebprojects.org — Bastien Ravel — bastien.revel@undp.org

Agencies reporting:

