

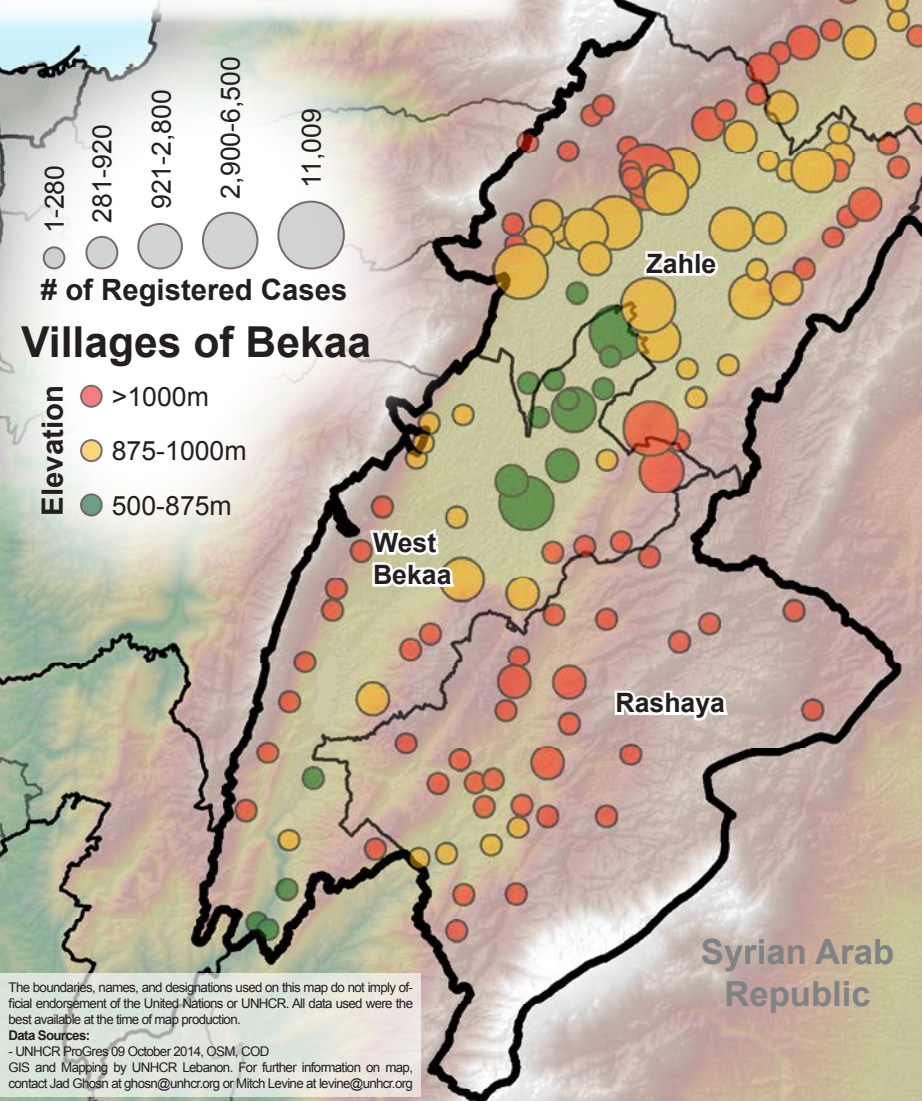


SYRIA REFUGEE RESPONSE

LEBANON Bekaa

Winterization Assistance

04 November 2014



Winterization assistance is based on eligibility lists derived from targeted households in the UNHCR proGres system. For blanket assistance, only those registered from 01 April 2014 were considered for eligibility due to others having recieved assistance last year.

All assistance listed is funded through the end of 2014.

Winterization Support by Type and Elevation

\$175 Ongoing Cash Assistance for the Most Vulnerable HH* No elevation restriction; \$175USD per month for August – December 2014; this group represents 3 of the 10% most economically vulnerable households; *Includes support from other agencies	3,102 Households
\$175 Cash Assistance for the Most Vulnerable HH No elevation restriction; \$175USD per month for November – December 2014; this group represents 7 of the 10% most economically vulnerable households	6,060 Households
\$80 Winter Support by CSC Card 875-1000m elevation; \$80USD per month	24,070 Households
\$100 Winter Support by Voucher >1000m elevation; \$100USD per month	28,504 Households
Blankets No elevation restriction; those who registered after 31 March 2014; in kind	21,281 Households

Highest Syrians in the Bekaa: 2209m

Aarsal: 1696m

Average Elevation in Bekaa: 1272m

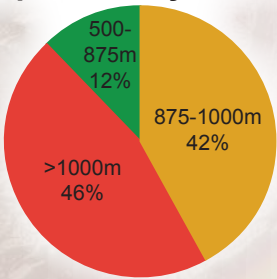
1000m

Zahle: 950-1000m

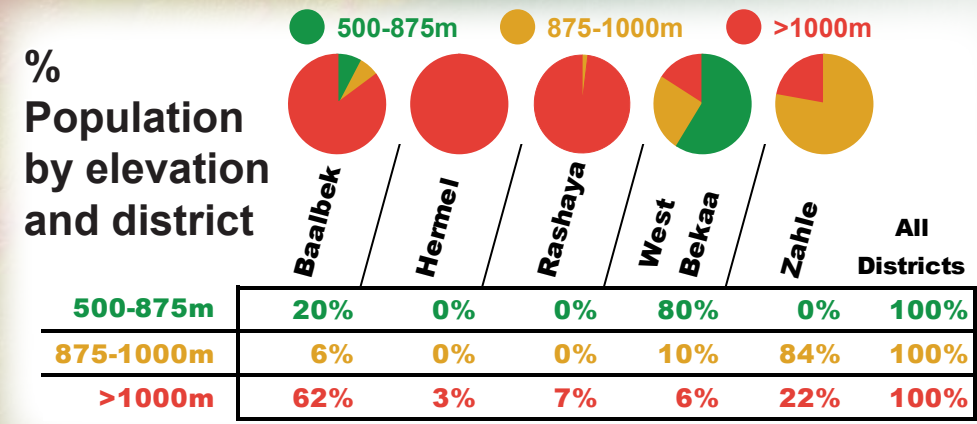
875m

Lowest Syrians in Bekaa: 613m

Syrian Refugee Population by Elevation



Out of 87,989 registered households in Bekaa, **61,826 households**, representing **285,818 individuals** will receive winterization support of some kind in 2014.



The boundaries, names, and designations used on this map do not imply official endorsement of the United Nations or UNHCR. All data used were the best available at the time of map production.

Data Sources:
- UNHCR ProGres 09 October 2014, OSM, COD
GIS and Mapping by UNHCR Lebanon. For further information on map, contact Jad Ghosn at ghosn@unhcr.org or Mitch Levine at levine@unhcr.org