

Inter-Sectoral Meeting

14 November



Agenda

- Feedback on Targeting HH Questionnaire
- Emergency Response Funds (ERF)
Presentation from OCHA
- LCRP Indicators framework/Activity Info
- AOB



Agenda

- Feedback on Targeting HH Questionnaire
- Emergency Response Funds (ERF)
Presentation from OCHA
- LCRP Indicators framework/Activity Info
- AOB



Feedback on Targeting HH Questionnaire – SC Sector

Social Cohesion

- To include some the questions from the IRC report related to protection/social cohesion – maybe as question four under coping strategies:
- In the last 30 days, have you ever:
 - Received help from Lebanese community members
 - Provided help from Lebanese community members
 - Been insulted by Lebanese community members
 - Been physically aggressed by Lebanese community members?
- Defining help as “help looking after your children, help when you are sick, help with housework, or giving money often”.
- The IRC study found that Cash assistance improves relationships between beneficiaries and other community members – it would be well worth being able to check this for cash transfers in general.



Feedback on Targeting HH Questionnaire – Livelihoods Sector

Livelihoods

- p.8 on household assets: recommendation to add 'telephone' to this list.
- P. 9 / question 2: To add 'Cash for Work'.
- P. 9 / question 3+4: Not clear why there is a difference between 'Borrowing Money' and 'Receiving credit'.
- P.9 / question 6: 'what is the level of education completed by the HoH?'
=> is this question to be answered for all adult Household members? Or is the highest level of education of the household? Not very clear..
- P. 9: for the Income category, it would be good to have a question on whether children also work. The IRC impact study on cash showed that cash transfers reduced child labor..
- Section IV : it would be good to ask if the income that came from the past 30 days is through regular/recurring sources of income/work. This can establish a better picture about whether the person has regular or irregular income over a longer period of time.



Feedback on Targeting HH Questionnaire – Health Sector

Health

- In the questions related to Health, Not clear what is serious medical condition and what is a chronic disease

Feedback on Targeting HH Questionnaire – Recent Developments

1. Database management: 5 concerns from Inter-Agency clarified:
 - RAIS database can be accessed by IPs and non-IPs*
 - RAIS will share unified formula/script to calculate eligibility **
 - RAIS can allow other agencies'/ sectors' data access*
 - RAIS can reflect formula scoring (not just eligible or ineligible)
 - RAIS cannot (policy) incorporate unregistered/ POCs data
2. Guidelines:
 - Positive: trainings and formula calculation can be done by WFP/ UNHCR
 - One Inter-Agency guideline: final draft shared today
 - Coordination mechanisms: one-pager to sub office
 - Agency SOPs: UNHCR, WFP, Consortium main ones

**clarity and fast tracking of data-sharing agreement*

*** e.g. the actual economic vulnerability and VASyR verification scores should be reflected in the database (not just eligible/ineligible).*

Feedback on Targeting HH Questionnaire – Recent Developments

- an IA agreement not to use the questionnaire (in a pilot or otherwise) prior to the development and review of SOPs/guidelines for its use by Protection
- Previously flagged protection issues that the guidelines should cover:
- informed consent for scope of information sharing
- referral pathways into cash for protection cases (if the bullet point about ‘establishing diverse referral pathways’ is supposed to cover this, it is not enough)
- means of flagging cases for referral to/follow up by protection actors (protection INGOs had understood this was the model that was going to be used, rather than manual referral by enumerators)
- extent and components of training to be delivered to enumerators
- appeals mechanism
- communications strategy

Feedback on Targeting HH Questionnaire – Next Steps

- Last Inter-Sector: presentation on questionnaire
- Questionnaire has now received feedback from LHIF, Sector Leads and Protection
- Next Steps:
 - Questionnaire revised as per comments
 - Questionnaire translated into ODK and arabic
 - Guidelines shared and approved
 - Training completed to agencies
 - Coordination and field work

Feedback on Targeting HH Questionnaire – Back up Slide LHIF/ SNAP

1. The targeting questionnaire, SOP, and database are inter-agency tools/systems and thus must be designed for utilization by IPs and non-IPs alike.
2. All partners inputting into the database must be able to see the data collected by all partners (except for data that must be hidden for protection reasons). This is a matter of overall efficiency in the response and one of the main reasons why INGOs committed time and effort to this process. A common beneficiary database would enable us to reduce assessment duplication and maximize use of data.
3. Partners must be able to directly calculate the economic vulnerability scores for the HHs they assess (either in the database or have access to the formula script or direct scoring via ODK).
4. The actual economic vulnerability and VASyR verification scores should be reflected in the database (not just eligible/ineligible).
5. The database should be able to include individuals/cases that are not in ProGres (i.e., unregistered and newcomers); noting that ownership of the database may affect newcomer/unregistered acceptance of information sharing.

- **Questionnaire:** UNHCR and WFP are coding into ODK and translating into Arabic the full/long version of the questionnaire that was circulated earlier. A revised questionnaire incorporating the feedback from LHIF, Protection and other sectors will come at a later date following discussion in Inter-Sector next week and a “pilot” period. This is based on a decision from the Inter-Agency Unit. However, it was not clear who was responsible for revising the questionnaire, as it was stated that the TTF has been dissolved. The version that UNHCR is currently coding will be shared this evening in Word format for reference. They will try to share the ODK version by the end of next week.
- **IPs/non-IPs access to RAIS:** As far as I understand, RAIS can be used by both IPs and non-IPs, as long as they have a data sharing agreement with UNHCR.
- **Inclusion of cases that are not in proGres** (e.g. unregistered, newcomers), is technically possible in RAIS but is a policy issue to be negotiated with UNHCR.
- **Formula/Scoring:** UNHCR and WFP are developing the scoring of the questionnaire in RAIS. They will need some data to finalize the scoring. Once they have some preliminary or dummy data to do this, it will take 3-5 days to finalize the scoring. They are trying to finalize this as soon as possible because they also need it for their winterization programs. From UNHCR, WFP, and Inter-Agency perspective, the ideal is that all questionnaires are scored through one system to ensure consistency. RAIS can score the questionnaires either automatically or in batches, whatever way we collectively agree we want the process to work in order to best ensure data quality. RAIS can score submitted questionnaires at whatever frequency we collectively agree is necessary. RAIS can display the actual Exp+PMT score and the actual VASyR Verification score for each case.
- **With respect to organizations being able to score their own beneficiaries directly:** According to UNHCR/Marc, the Exp+PMT formula has already been provided by the TTF in the second set of recommendations (see Annex 3 from the recommendations attached). UNHCR will share the scoring script for RAIS once it is finalized. It was not clear to me during the meeting how this will translate for agencies who would be using other databases (e.g. Access, Excel, etc.) to score their beneficiaries. I assume we would want organizations to use common scoring scripts for these other databases that we know produce the same scores as the RAIS script, for the sake of consistency (rather than everyone producing their own version of the script from the formula information in Annex 3). As I understand it, this is particularly important for organizations who have non-registered beneficiaries (because we have not yet agreed if/how to handle non-registered in RAIS) and any non-IPs who don't yet have a data sharing agreement with UNHCR to use RAIS.
- **Seeing data collected by other organizations in RAIS:** All partners can see all the data they themselves collected in RAIS. It will also be possible for all partners using RAIS to see the actual Exp+PMT and VASyR Verification scores, regardless of who collected the data. However, what additional information/data you can see beyond this would be dependent on the details of your data sharing agreement with UNHCR and/or will require you to make a request to UNHCR for a report on the data you are looking for. There does not seem to be a query or filter function that partners would have access to (but I could be wrong about that). As far as I understood, UNHCR (and I think WFP) would be able to see all data collected by everyone.



Agenda

- Feedback on Targeting HH Questionnaire
- Emergency Response Funds (ERF)
Presentation from OCHA
- LCRP Indicators framework/Activity Info
- AOB

Lebanon Emergency Response Fund

IS meeting

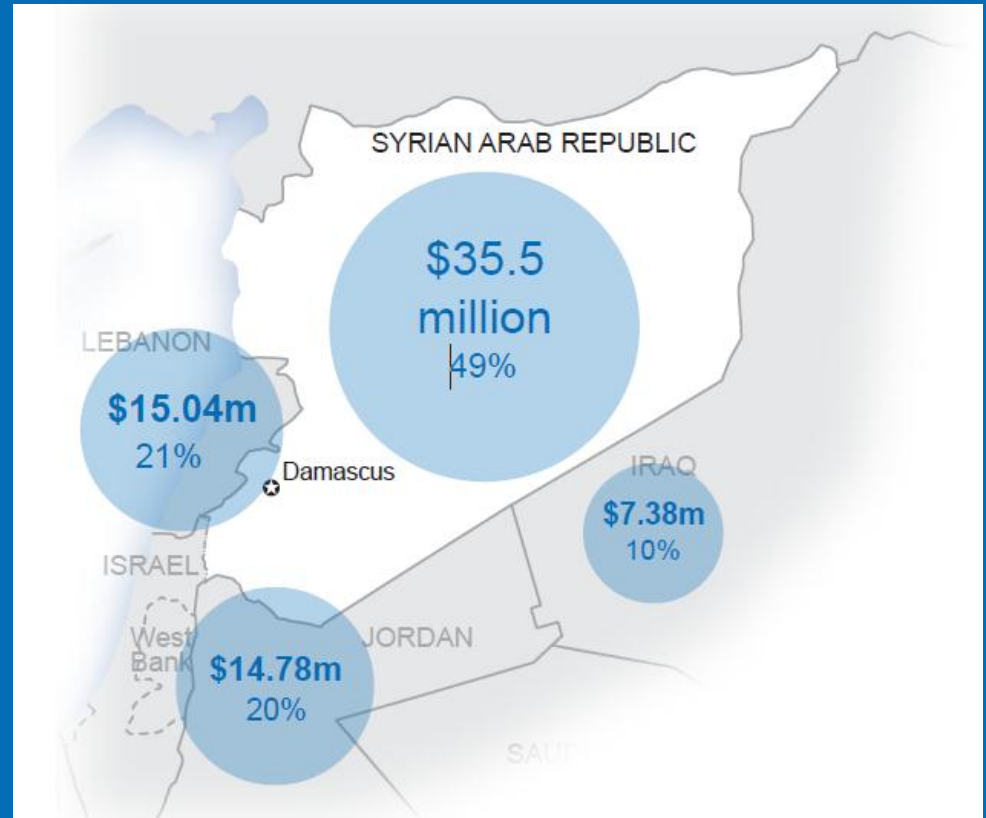
Beirut

14 November 2014



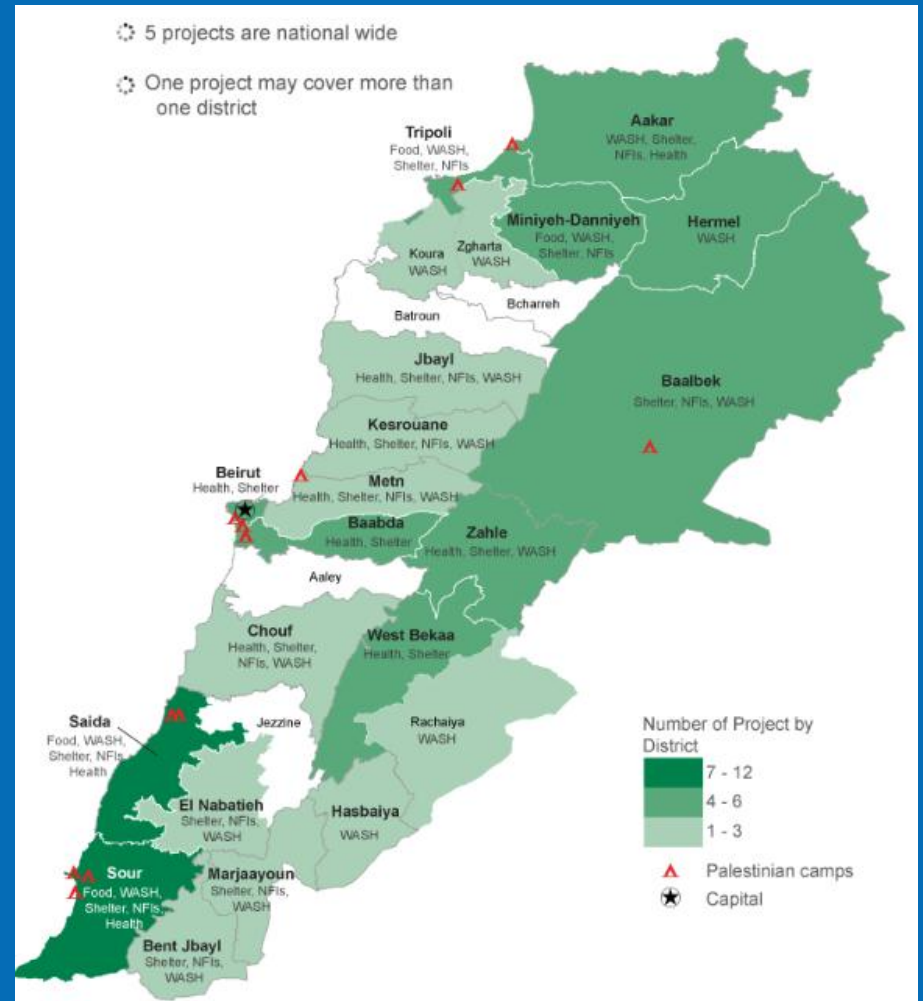
Syria ERF - Funding Update

- Total contributions: \$81M
- Allocations: \$73M, 209 projects
- Balance: \$2M



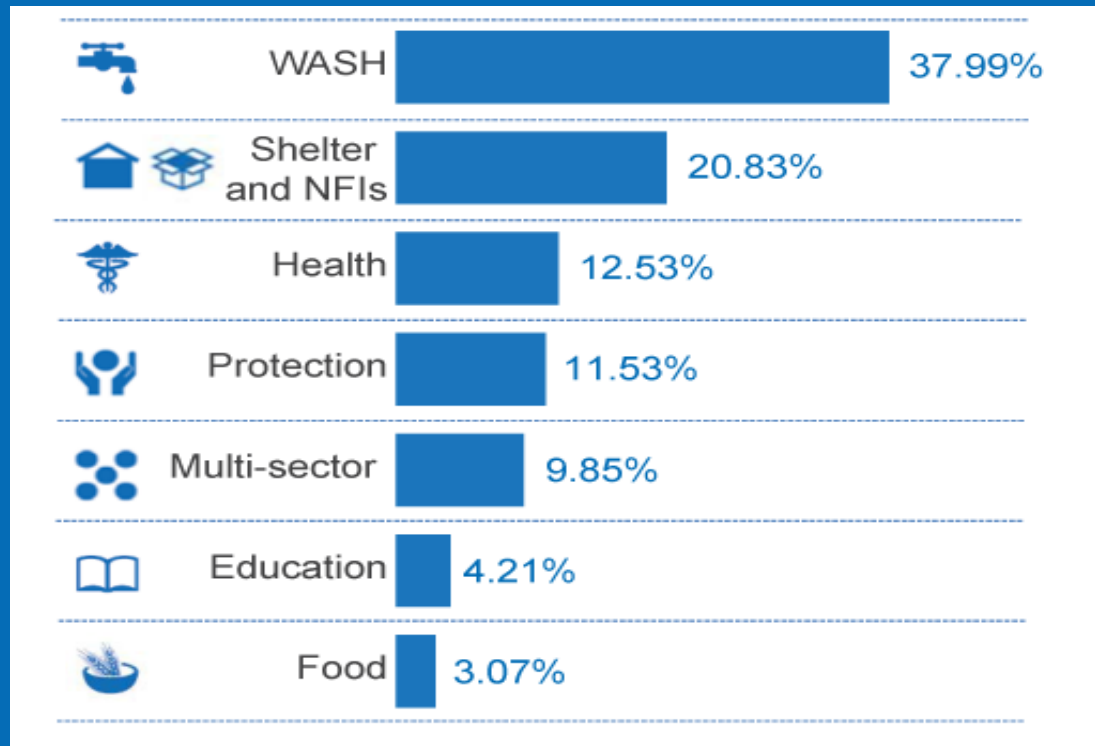
Syria ERF - Funding Update: Lebanon

- Allocations: \$15.04M
- Projects: 54
- Beneficiaries: 660.000



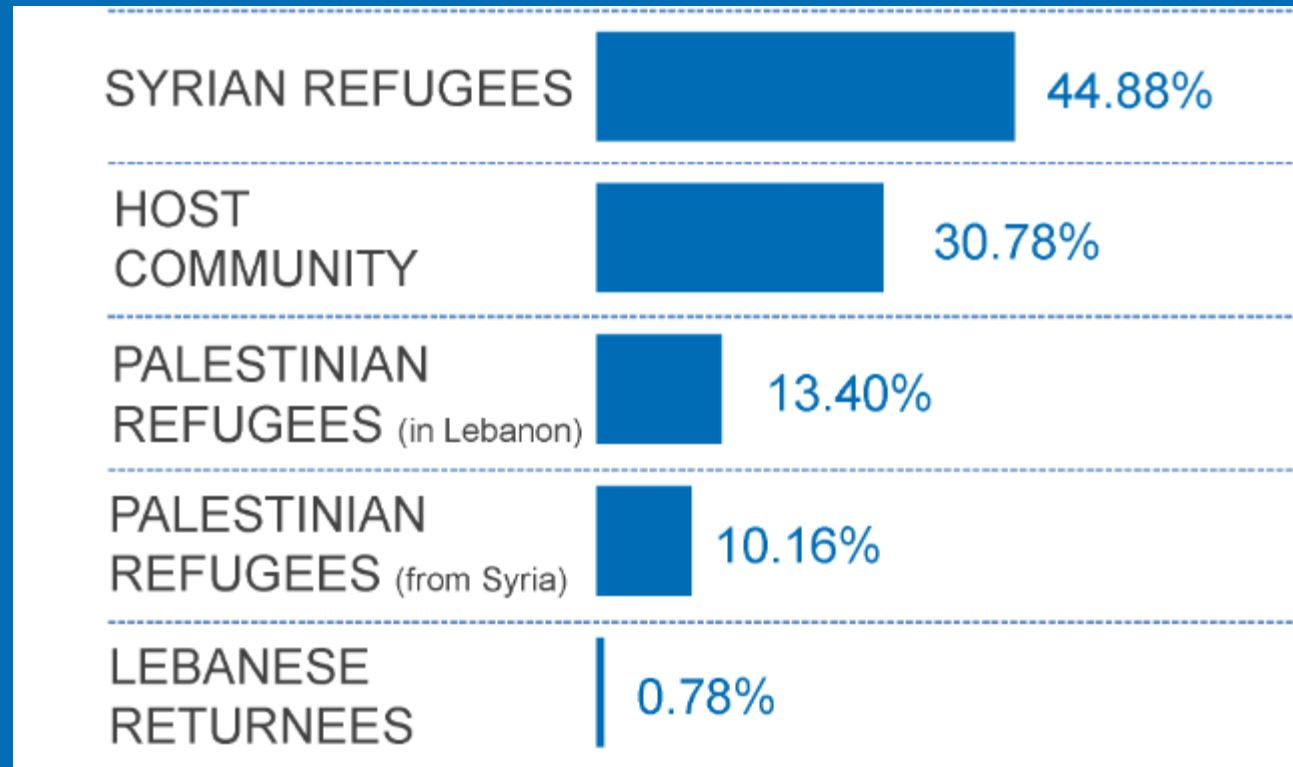
Syria ERF - Funding Update: Lebanon

ALLOCATION PER SECTOR



Syria ERF - Funding Update: Lebanon

ALLOCATION PER BENEFICIARIES



Lebanon ERF

FOCUS OF THE LEBANON ERF

- Providing humanitarian partners with rapid, timely and flexible funding to respond to the current humanitarian situation affecting Lebanon.
- Initiating life-saving activities targeting the affected local communities, refugees (Syrian and Palestine) and **host communities (Lebanese and Palestine) alike.**
- ERF allocations will be guided by, and aimed at supporting the delivery of the existing Lebanon Response Plan.
- Enhancing the access of the local NGOs to the fund.



GOVERNANCE STRUCTURES –

The Advisory Board - AB

- Supporting the HC to steer the strategy and oversees the performance of the ERF;
- Ensuring that the ERF is well coordinated with humanitarian partners and adequately articulated to broader priorities and sources of funding;
- Supporting the advocacy and resource mobilization role of the HC.

The Review Board - RB

- Conducting the strategic review of the ERF proposals with advice from the Sector lead agencies, ensuring project alignment with priorities set by the Fund Strategy Paper and, where relevant, by the Call for Proposals / Allocation paper.



Lebanon ERF

GOVERNANCE STRUCTURES - Advisory Board (AB)

- **Chair:** HC shall chair and convene AB meetings. The OCHA HoO shall attend to represent OCHA as the manager of the Fund.
- **Secretariat:** OCHA Humanitarian Financing Unit
- **Donors:** Representatives and alternates of donors contributing or potentially contributors of the Lebanon ERF
- **UN Agencies:** Representatives and alternates of 2 UN agencies.
- **NGOs:** Representatives and alternates of 2 INGOs AND 2 NNGOs selected amongst previous and current recipients of ERF funding in Lebanon.
- **Observer members:** The HC may invite key humanitarian donors that do not contribute to the ERF to participate in the AB as observers.



Lebanon ERF

GOVERNANCE STRUCTURES - Review Board (RB)

- **UN Agencies:** Representatives and alternates of 2 UN agencies.
- **NGOs:** Representatives and alternates of 2 INGOs and 1 NNGOs selected amongst previous and current recipients of ERF funding in Lebanon.
- **Gender Adviser:** Representative and alternate from one national NGO with expertise in Gender.
- **OCHA:**
 - The RB will be chaired by the OCHA Head of Office (HoO). This function can be delegated to the Fund Manager when the HoO is unavailable.
 - OCHA Humanitarian Financing Unit will participate in all sessions of the RB.



Lebanon ERF

Workflow – Call for proposals _

Step 1 Submission of proposal	1.1 Development and launch of Allocation Strategy	* Clusters * OCHA * HC * AB	
	1.2 Submission of full project proposal	* Implementing partner	
	1.3 General check by HFU (eligibility of partner in case of suspension, compliance with template, duplication of proposal, etc.)	* HFU	2 working days
Step 2 Strategic review	2.1 Review Committees/Sector Core Groups use Scorecards for projects in their respective clusters/sectors. Review Board finalizes shortlist for recommendation to the HC	* Review Committees/Sector Core Groups * HFU * CCs * RB	14 working days
Step 3 HC approval and AB consultation	3.1 Projects shortlisted are submitted to the HC for approval (this step can happen together with the step below - 3.2 - as part of a meeting)	* HC * HFU	2 working days
	3.2 Projects approved by HC are shared with AB for consultation (whilst simultaneously pushed forward for technical review or development of full proposal by partner). AB has 1 or 2 working days to object/comment	* AB * HFU	1-2 working days
Step 4 Technical and financial review	4.1 Financial and technical review	* OCHA (HFU and FCS Finance Unit) * Review Committees/Sector Core Group * Gender Advisor	15 working days
	4.2 Consolidation of financial and technical comments and submission to partner	* HFU	
	4.3 Revision of proposal - max 3 times	* IPs	
Step 5 Approval	5.1 HFU prepares draft Grant Agreement and decides start date in consultation with partner, and consequent reporting timeline	* HFU	1 working day
	5.2 HC approves project and signs Grant Agreement; approved projects are shared with the AB for information	* HC	2 working days
	5.3 Grant Agreement is shared with IP for counter-signature (date marks start of eligibility)	* IPs	2 working days
	5.4 Grant Agreement is signed by OCHA EO	* OCHA FCS Finance Unit * OCHA ASB	2 working days

Online application – Grant management System

- Online Application and projects review / approval
- Online data storage – fully secure
- Online report management – internal, external (FTS, OCT etc), export raw data in real time
- Analysis of data, comparison of data with other systems in real time
- Streamline with CBPF guidelines
- Dependencies with other data sources are reduced



Lebanon ERF

NEXT STEPS

- Form the AB and the RB
- Finalize and decide on the strategy and the accountability framework of the fund
- Train NGOs, sectors and on the GMS (Grants Management System)
- Set priorities with the sector leads for a call for proposals of \$2M



THANK YOU





Agenda

- Feedback on Targeting HH Questionnaire
- Emergency Response Funds (ERF)
Presentation from OCHA
- LCRP Indicators framework/Activity Info
- AOB

LCRP 2015

LCRP Indicators framework/Activity Info

Time line

#	LCRP planning		Start	End
1	Identify HF monthly indicators by sector, their disaggregation involving field and operational needs	Sectors/IMS	14/Nov/14	24/Nov/14
1.2	MnE/IM meeting on the design of Activity Info (AI) database(s)	IMS	25/Nov/14	25/Nov/14
1.3	Present the agreed structure to IMWG	IMS	26/Nov/14	26/Nov/14
1.4	Present the agreed structure and plan to Inter-sector meeting	IMS	28/Nov/14	28/Nov/14
1.5	Design of Ai database(s)	IMS	29/Nov/14	8/Dec/14
1.6	Draft SOP for AI	IMS	26/Nov/14	10/Dec/14
1.7	Meeting (conference call with AI Developer)	IMS	19/Nov/14	19/Nov/14
1.8	Circulate and finalize SOP	Sectors/IMS	10/Dec/14	14/Dec/14
1.9	Training package developed	Sectors/IMS	14/Dec/14	20/Dec/14
2	Disseminate SOP/Training to all partners and field	IM/inter-agency meeting	20/Dec/14	24/Dec/14
3	Training of partners/ beirut and field	IMS	12/Jan/15	31/Jan/15
4	First Reporting on AI	Partners/agencies	1/Feb/15	10/Feb/15

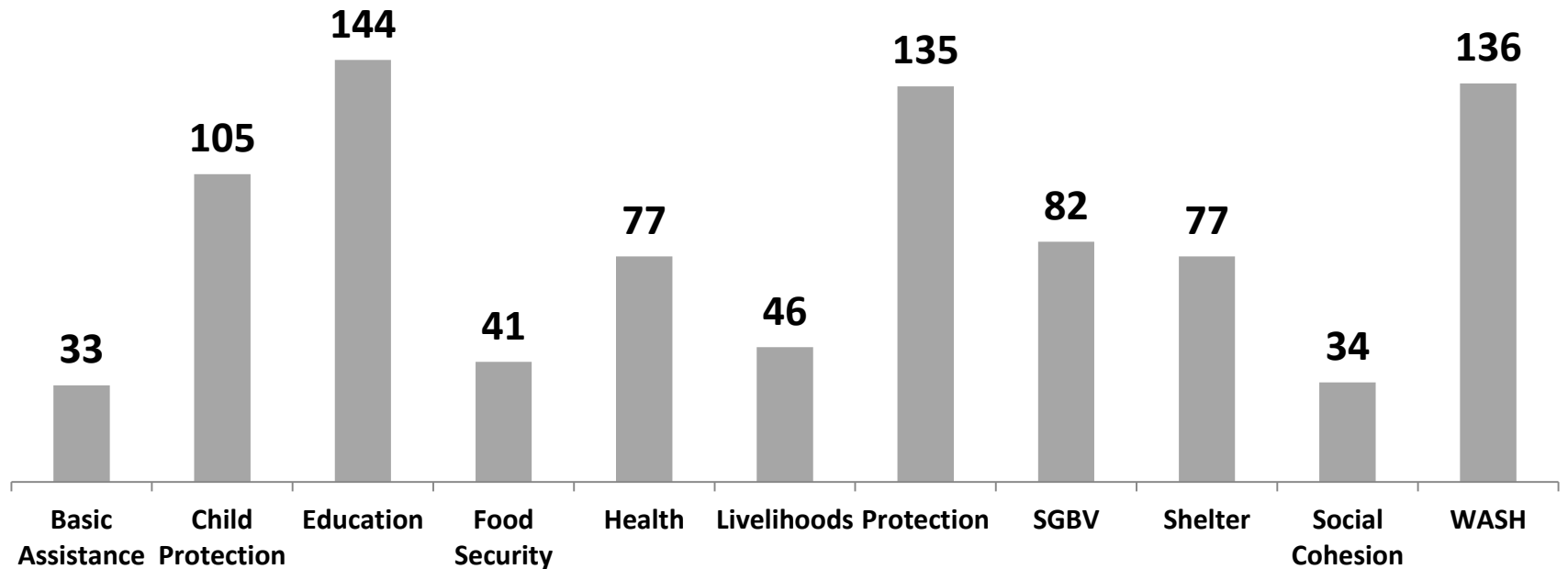
Key dates

			Start	End
1	Identify high frequency (monthly) indicators by sector, their disaggregation involving field and operational needs	Sectors/IMS	11/Nov/14	24/Nov/14
1.5	Design of AI database(s)	IMS	29/Nov/14	8/Dec/14
2	Disseminate SOP/Training to all partners and field	IM/inter-agency meeting	20/Dec/14	24/Dec/14
3	Training of partners	IMS	12/Jan/15	31/Jan/15
4	First Reporting on AI	Partners/agencies	1/Feb/15	10/Feb/15

Lesson Learnt from last year

- Confusion on the definition
- Too many indicators without being able to use/analyze them
- Indicators were not always useful for programming and day-to-day operational and coordination need
- Disaggregation for some indicators which were not realistic for field-level data collection
- The data needs in the field were not always met

Activity Indicators (after population disaggregation)



TOTAL = 910

Outcome, Output Indicators

- Protection
 - 12 original Indicators (104 after every possible disaggregation is to be considered)
- SGBV
 - 11 original Indicators (95 after every possible disaggregation is to be considered)

Further Disaggregation

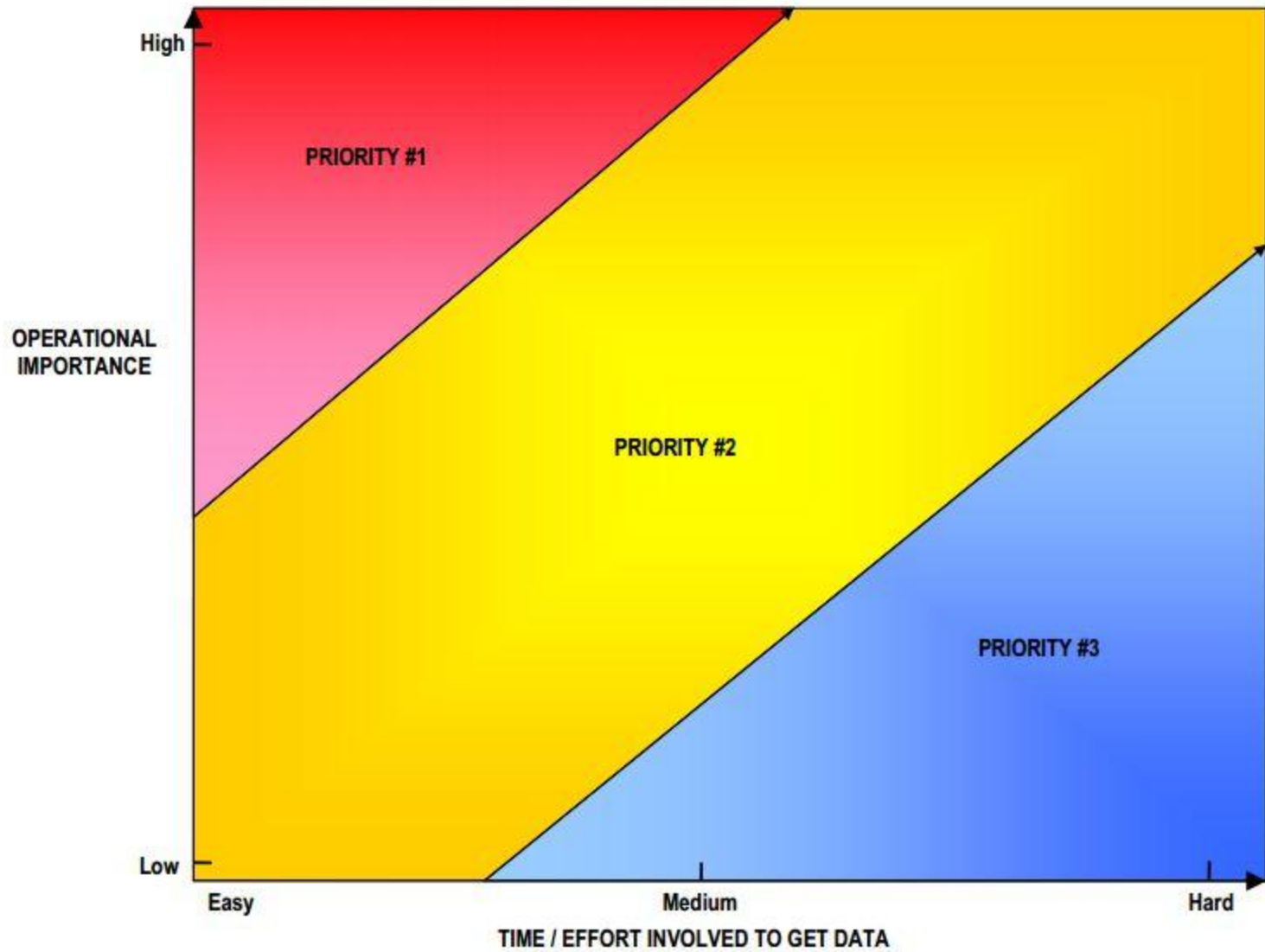
For approx. half of them, we may have

- x 2 Gender
- x 2 to 5 age group
- x 26 Districts/Caza
- x 1600+ Cadastrals
- x 2 (or) more types of assistance

Recommendations

- Field and Operational needs to know the progress/lack there of
- Data needs for coordination and reporting
- Field-level data collection and data entry workload
- Prioritization

PRIORITIZATION GRAPH FOR DATA COLLECTION IN EMERGENCIES



THANK YOU.



Agenda

- Feedback on Targeting HH Questionnaire
- Emergency Response Funds (ERF)
Presentation from OCHA
- LCRP Indicators framework/Activity Info
- AOB

Thank You!

