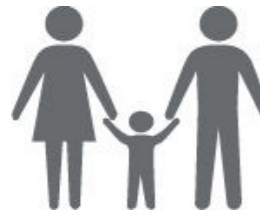


# SYRIA REFUGEE RESPONSE

## LEBANON, Bekaa Governorate

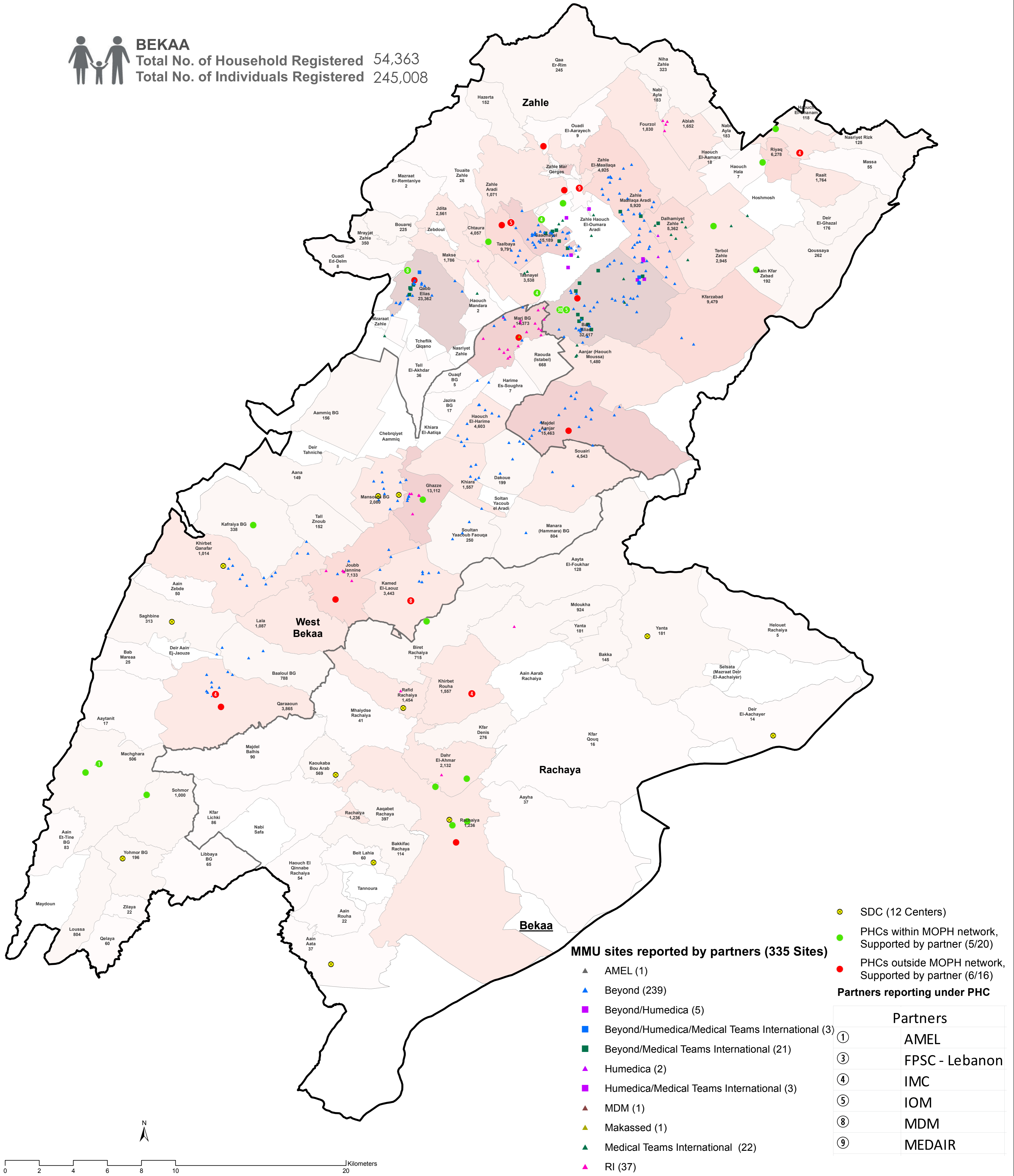
### Distribution of the PHCs and MMUs based on January 2016 reporting



#### BEKAA

Total No. of Household Registered 54,363

Total No. of Individuals Registered 245,008



**Notes**

This map has been produced by UNHCR based on maps and material provided by the Government of Lebanon for UNHCR operational purposes. It does not constitute an official United Nations map. The designations employed and the presentation of material on this map do not imply the expression of any opinion whatsoever on the part of the Secretariat of the United Nations concerning the legal status of any country, territory, city or area or of its authorities, or concerning the delimitation of its frontiers or boundaries.

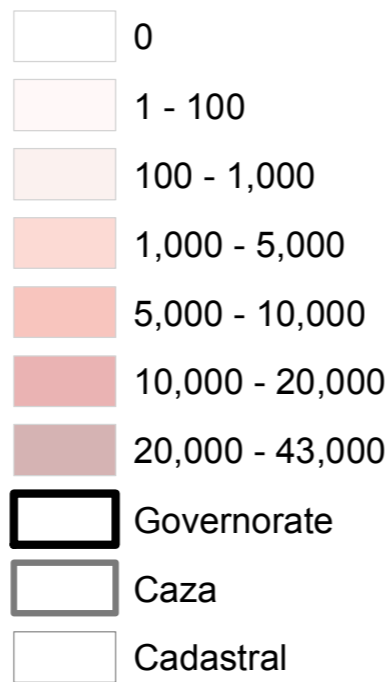
Data Sources:  
- Lebanese Border, Caza and Cadastral Boundaries: NPMPLT 2005.  
- Geographic Projection WGS 1984

Registered Refugees Figures by UNHCR as of 31 December 2015.  
For more information contact Rana G. Ksaifi at ksaifi@unhcr.org

PHCs and MMUs Data as reported under the health database in Activityinfo

GIS and Mapping by UNHCR. For Information and updates  
contact Jad Ghosn: ghosn@unhcr.org  
Maroun Sader: sader@unhcr.org

#### No. of Refugees per Cadastral



#### Location Diagram

