



SITUATION ANALYSIS

Partner agencies, in coordination with MOSA, conducted around 60 group discussions and participatory dialogues in October with the displaced and host populations, with men, boys, women and girls of diverse backgrounds. These assessments remain one of the best forums to gather information about protection risks and concerns of refugees as well as the host communities, and also represents a good opportunity to identify capacities and solutions from within the communities. Preliminary findings indicate that the lack of valid residency, limited humanitarian assistance and healthcare remain recurrent major concerns.

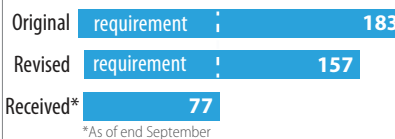
Onward movement to Europe by an increasing number of Syrians has been observed through and from Lebanon to Turkey, through air connections or the maritime route between Lebanon and Turkey. The vast majority of persons observed to be moving are Syrian nationals who arrive directly from Syria and transit via the Masna'a or Aboudiyeh crossing points through a transit visa. It is more difficult to gauge onward movements of Syrians who have been residing in Lebanon but residency challenges and dwindling assistance remain the main reasons expressed by the displaced for their interest to leave. In addition, there have been several reports of Syrians subjected to scams related to resettlement or other humanitarian admission programmes.

Partners working with persons with special needs continue to work at the grass roots level to deliver support services including assistive devices to persons with disability but face challenges to ensure support for longer term care which requires a cross-sectoral approach. Partners continue to highlight the limited assistance available to meet the needs of persons with mental and learning disabilities.



FUNDING

(in Million \$)



PEOPLE

In Need/Target

1.3 m (People in Need)

1.2 m (People Targeted)

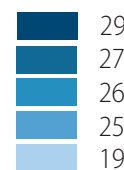
Refugees	Vulnerable Lebanese
1,815,000	370,000



PARTNERS

47 in Lebanon

count of partners per
area of operation

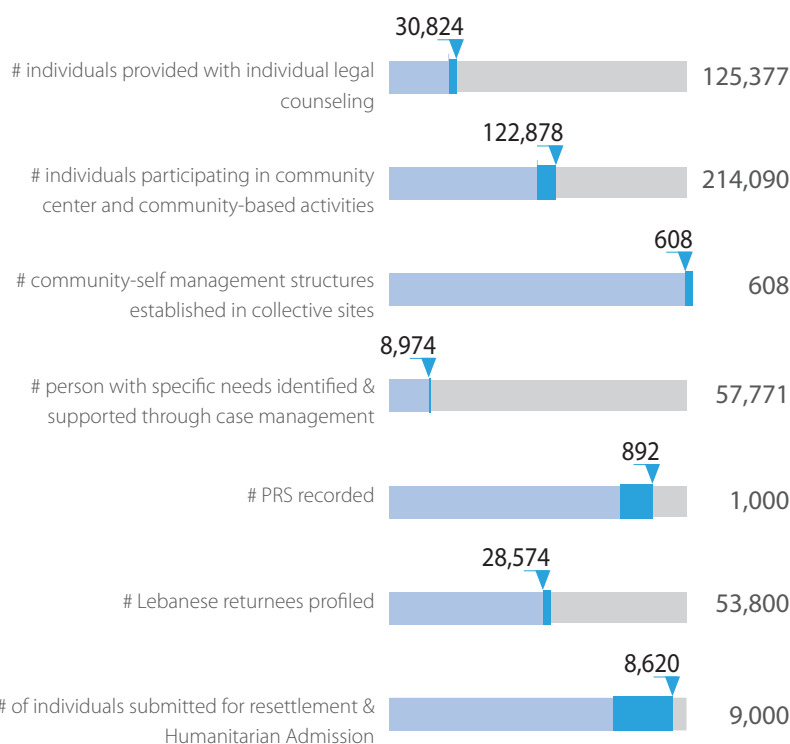


PROGRESS AGAINST 2015 TARGETS

Month of September & October progress

Progress

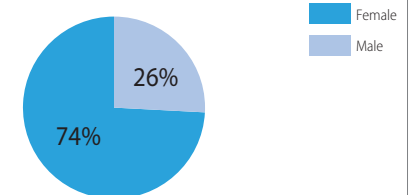
Jan-Aug
Sep-Oct



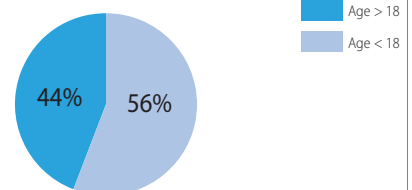
SGBV: Mobile Services

(Out of 102,385 individuals reached)

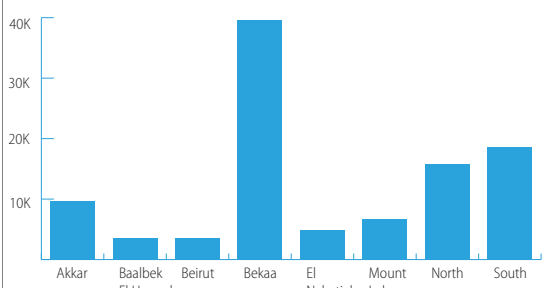
of individuals reached by mobile services (% by gender)



of individuals reached by mobile services (% by age)



of individuals reached by mobile services (by governorate)





SITUATION ANALYSIS

MoSA has established an expanded network of child protection and other services for most vulnerable children, caregivers and families in 57 SDCs through the National Plan to Safeguard Children and Women. This plan helped strengthen coordination and capacity of child protection workforce through training and coaching programmes.

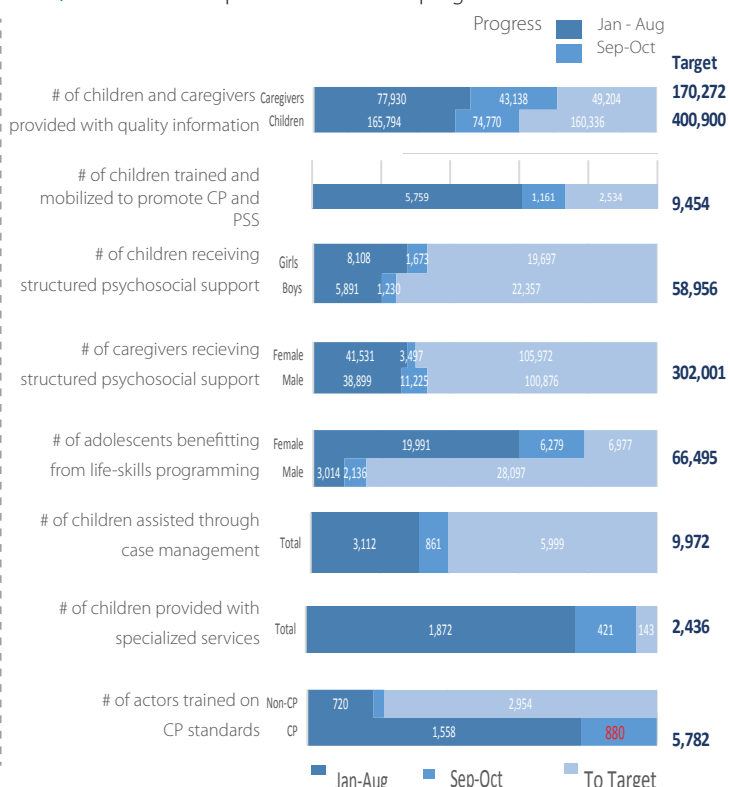
During this period, 74,770 children and 43,138 caregivers received quality information that they are able to prevent and mitigate protection risks and know where to go to seek help; 23,222 children (11,997 girls, 11,225 boys) and 8,415 caregivers (6,279 women, 2,136 men) received structured psychosocial support; 861 children received life-saving case management; 421 children received further specialized services such as provision of multi-sectoral response services that includes family-based care, judicial protection, cash support and mental health services, ; and 2903 adolescent girls and boys (12 to 17 years) have benefitted from life skills training. While these results show a positive note, it should be noted that women continue to access psychosocial support services in greater numbers than men, as such, CP sector members are increasing their efforts in reaching out to men.

The CP sector undertook a contextualization process whereby eleven selected standards of the Child Protection Minimum Standards will be adapted to make them more relevant to Lebanon's operating context. This process is led by a Task Group through identification of standards via survey monkey, discussion and workshop that was co-led by MoSA and SCI in a participatory manner with CP organizations and Government institutions. The identified Standards are MHPSS, Justice for Children, Community-Based Mechanisms, UASC, Economic Recovery, Child Labour, Physical Violence & Harmful Practices, Human Resources, Education, Protection excluded children, and CP Monitoring. A validation workshop is planned for January 2016 the purpose is to then utilize these standards for planning, advocacy, capacity building and fundraising efforts through government ownership.



PROGRESS AGAINST 2015 TARGETS

Month of September & October progress



SITUATION ANALYSIS

Development of standard tools and training packages, coupled with on-the-job support to social workers continue to ensure that they have the appropriate knowledge and skills required to care for SGBV survivors in a safe and non-discriminatory manner, according to quality standards.

Based on the VaSyR findings in 2015, it is estimated that around 30,000 refugees from Syria have some sort of physical, sensory or mental impairment. These persons are often excluded from community activities designed to mitigate the risks of SGBV. A variety of attitudinal, communication and environmental barriers also make it difficult for them to access SGBV services when required. In order to address these barriers, specialized service providers benefited from two sets of training to enhance their skills in understanding and recognizing the factors that may make persons with disabilities more vulnerable to SGBV and apply a survivor-centered approach when working with survivors with disabilities.

Additionally, humanitarian workers and service providers have participated in a one-day training on the Law to Protect Women and other Family Members from Family Violence (Law 293) aiming at increasing awareness and knowledge on the Law itself and enable them to provide preliminary information to any survivor of family violence.

A four-day training workshop on the Application of the Basic Living Skills Program (BLSP), a package including sessions on GBV, gender equality SRH also targeted social workers in providing services in Bekaa governorate.

In total, 1078 frontline workers and specialized service providers have been enrolled in capacity building activities since the beginning of the year.



PROGRESS AGAINST 2015 TARGETS

Month of September & October progress

