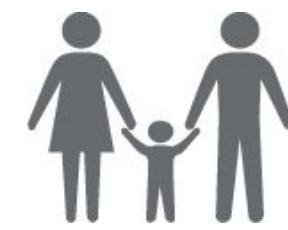


# SYRIA REFUGEE RESPONSE

## LEBANON North Governorate, Tripoli, Batroun, Bcharreh, El Koura, El Minieh-Dennieh, Zgharta Districts (T+5)

### Distribution of the Registered Syrian Refugees at the Cadastral Level

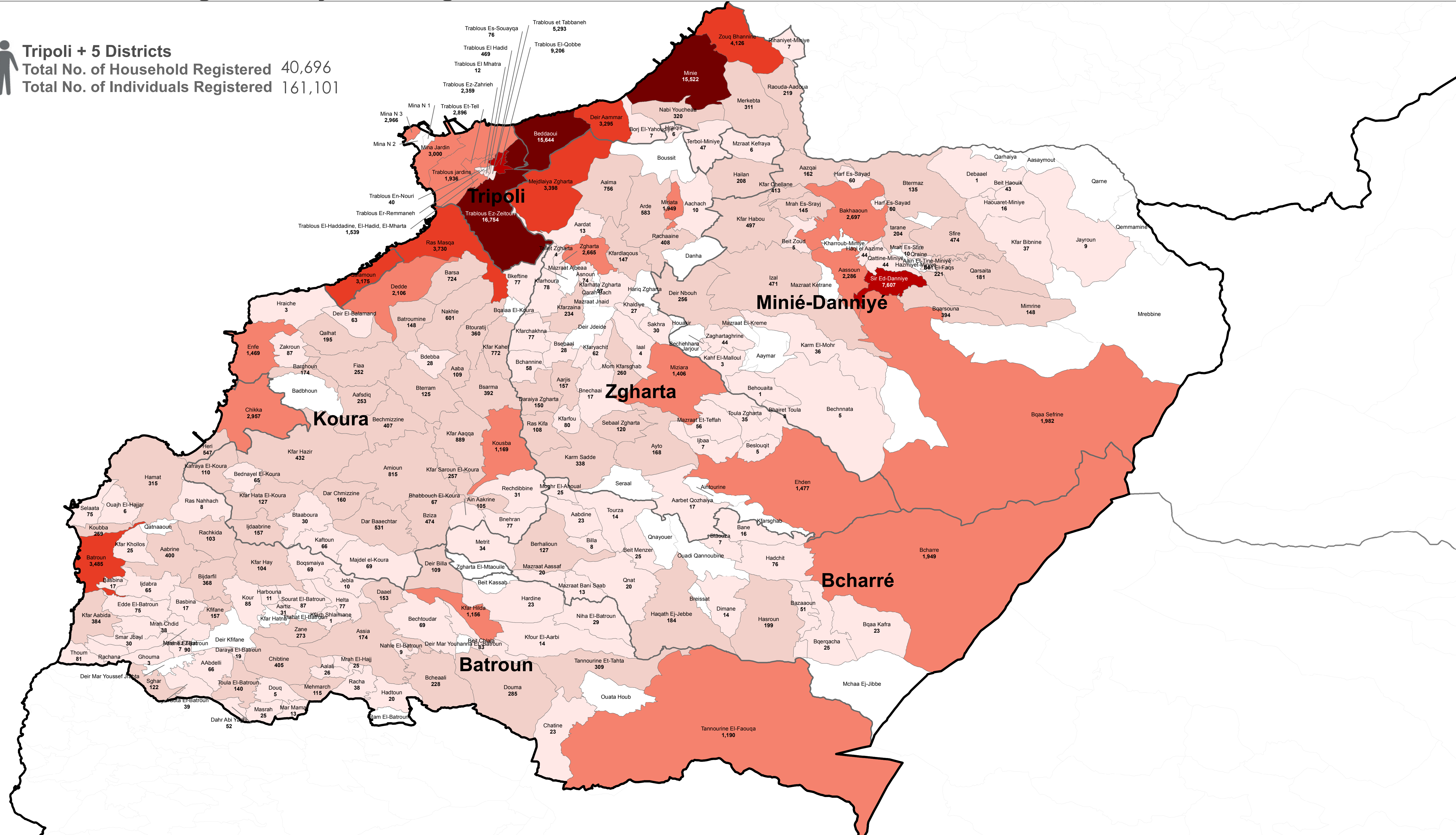
As of 31 October 2015



#### Tripoli + 5 Districts

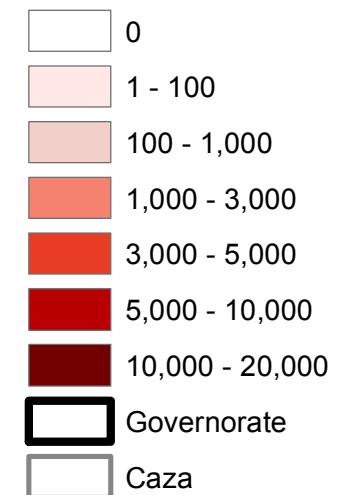
Total No. of Household Registered 40,696

Total No. of Individuals Registered 161,101



#### Legend

##### No. of Refugees per Cadastral



#### Notes

This map has been produced by UNHCR based on maps and material provided by the Government of Lebanon for UNHCR operational purposes. It does not constitute an official United Nations map. The designations employed and the presentation of material on this map do not imply the expression of any opinion whatsoever on the part of the Secretariat of the United Nations concerning the legal status of any country, territory, city or area or of its authorities, or concerning the delimitation of its frontiers or boundaries.

Data Sources:  
- Lebanese Border, Caza and Cadastral Boundaries: NPMPLT 2005.  
- Geographic Projection WGS 1984

Registered Refugees Figures by UNHCR as of 31 October 2015.  
For more information contact Rana G. Ksaifi at [kzaifi@unhcr.org](mailto:kzaifi@unhcr.org)

GIS and Mapping by UNHCR. For Information and updates  
contact Jad Ghosn: [ghosn@unhcr.org](mailto:ghosn@unhcr.org)  
Maroun Sader: [sader@unhcr.org](mailto:sader@unhcr.org)

NPMPLT: National Physical Master Plan for the Lebanese Territory

The No. indicates the registered refugees at the cadastral level



#### LOCATION DIAGRAM

