

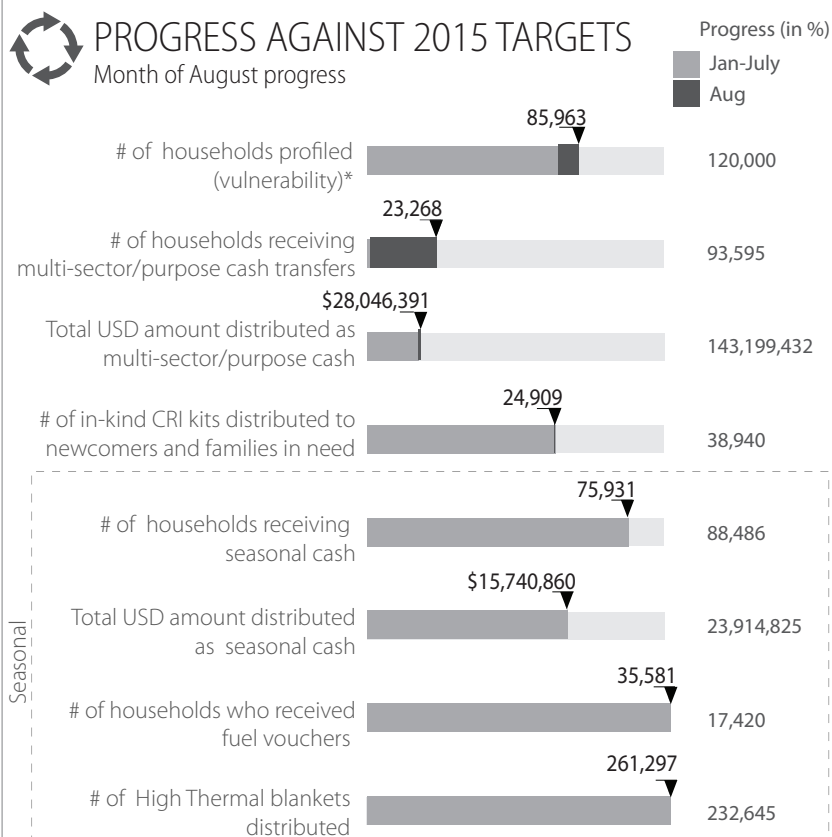
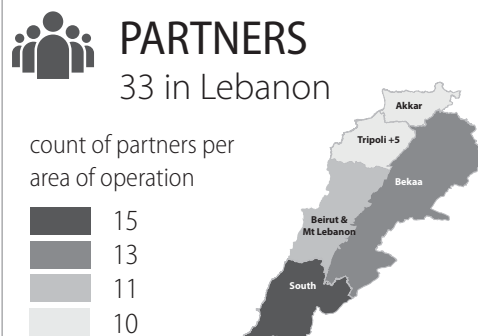
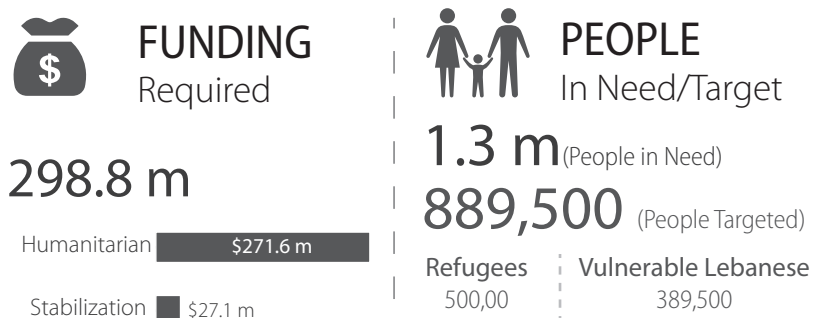
HIGHLIGHTS

Syrian refugees are facing increased challenges in meeting their basic needs. This fact was confirmed by the Vulnerability Assessment of Syrian Refugees in Lebanon for 2015 where the percentage of households below the poverty line (3.84\$/person/day) has increased from 50% to 70% while those living under the Survival Minimum Expenditures Basket increased from 29% to 50% as compared with 2014.

The demographic profile of the 38% most vulnerable, among the 85,963 families visited by August 2015, indicates an average family size of 7 with 63% children under 17. The profile of these families shows that in every 20 households there is at least one disabled person. Furthermore, 94% of the most vulnerable families are indebted and only 1 of every 5 adults reported having earned some living in the last 30 days. Their living conditions are getting worse as 80% of them live in poor quality shelter which increases their exposure to seasonal hazards.

Out of the refugee families that have had their economic vulnerability assessed, 30,000 were identified to require financial support. 23,268 families received multi-purpose cash assistance in August. The remaining families are in the process of being referred to cash partners for assistance. It is worth noting that these families are automatically included in the cash for winter assistance scheme.

The Basic Assistance sector is currently strategizing for the coming 2015-2016 winter assistance campaign. The monetization of assistance is expected to increase. Cash facilitates access of vulnerable families to markets and helps prioritize of their needs in a dignified way. Along with cash assistance, some basic nonfood items (blankets and winter clothes), fuel vouchers, and shelter activities will be implemented.



BASIC ASSISTANCE - FACTS AND FIGURES

Minimum Expenditure Basket (MEB): **114\$/Capita/Month**

Survival Minimum Expenditure Basket (SMEB): **87\$/Capita/Month**

Syrian refugee households living under MEB: (source VaSyr 2015) **70%**

Syrian refugee households living under SMEB: (source VaSyr 2015) **50%**

Education Level of Head of Households VS socio-economic vulnerability

