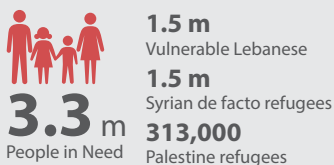


LEBANON CRISIS RESPONSE PLAN

MONTHLY DASHBOARD JULY 2015



PLANNING FIGURES



2.2 million
Targeted for protection and direct assistance

2.9 million
Targeted for service delivery, economic recovery and community vices in 242 most vulnerable communities

\$1.87 billion
Funding required

SITUATION OVERVIEW

The LCRP Steering Committee met in July to review the achievements of the LCRP and way forward. The overall funding requirements were revised downwards to US\$1.87 billion with \$815m urgently required for critical interventions until December. Preliminary findings of the 2015 VASyR reveal that vulnerability of Syrian refugees is increasing. Households are applying more severe coping strategies and 70 per cent of them are now living below the poverty line (\$3.84/person/day), an increase from 50 per cent last year. An indirect result is that more and more vulnerable refugees are seeking for shelters in poor urban neighborhoods where the access to basic urban services is already under strain. These results come at a time when WFP's funding shortfalls forced it to reduce the e-card value from \$19 to \$ 13.5 per person. As for education, the ALP programme was launched to provide the opportunity for children who missed school for a minimum of two years, to resume their formal education. Protection concerns were raised as many refugees living in informal settlements in the North, including in the Sahel area and Minnieh Dinnieh, were evicted due to security consideration and requested to relocate far from main access roads and military facilities. The social stability and livelihoods sectors have conducted a gap analysis and noted that 130 vulnerable cadastres remain without active social stability partners or activities implemented in them for the former and livelihood actors are only present in 80 vulnerable cadastres across the country, while actors are absent from some notable urban areas.

HIGHLIGHTS SINCE JANUARY

- 1,502** of livestock farmers supported with technical training and equipment
- 75,254** households profiled (vulnerability)
- 5** of schools rehabilitated, including WASH
- 216,439** of children under 5 years old by age and gender received routine vaccination
- 262,429** individuals provided with improved wastewater/sewage systems
- 3,439** of targeted vulnerable persons enrolled in rapid income job creation activities
- 253** municipalities, unions, SDCs benefitting from capacity building programmes
- 21,718** unoccupied or occupied substandard buildings (unfinished houses, garages, worksites etc) rehabilitated
- 89,452** individuals participated in communitycenter and community-based activities
- 7,047** boys and girls received psychosocial support
- 8,850** community members were sensitized on GBV and referral pathways

NUMBER OF PARTNERS

of partners per governorate by sector

GOVERNORATE	TOTAL									
Akkar	58	14	9	21	6	11	7	5	14	12
North (T5)	63	17	9	9	3	13	11	7	20	13
Bekka	65	11	15	19	8	11	9	21	19	
Baalbek/Hermel	50	14	10	17	6	8	6	8	16	5
Mt Lebanon & Beirut	73	22	12	23	7	14	7	6	25	14
South	58	17	8	9	5	11	9	5	18	14
El Nabatieh	36	6	8	16	5	8	6	5	10	10

2015 FUNDING

Required Funds per Sector

	Food Security	\$352 m
	Basic Assistance	\$298.8 m
	Education	\$248.6 m
	WASH	\$224 m
	Health	\$199.6 m
	Protection	\$156.6 m
	Livelihoods	\$154.8 m
	Social Stability	\$132.8 m
	Shelter	\$133.7 m

NEW MOST VULNERABLE CADASTRES MAP

251 Cadastres

87% Refugees

67% Deprived Lebanese

