

# SYRIA REFUGEE RESPONSE

## LEBANON Beirut and Mount Lebanon Governorates

### Distribution of the Registered Syrian Refugees at the Cadastral Level

As of 30 June 2015



**UNHCR**  
The UN  
Refugee Agency

#### Distribution of the Registered Syrian Refugees by Province

##### BEIRUT



Total No. of Household Registered 9,672

Total No. of Individuals Registered 31,923

##### MOUNT LEBANON



Total No. of Household Registered 82,003

Total No. of Individuals Registered 312,000

Beirut

Jbeil

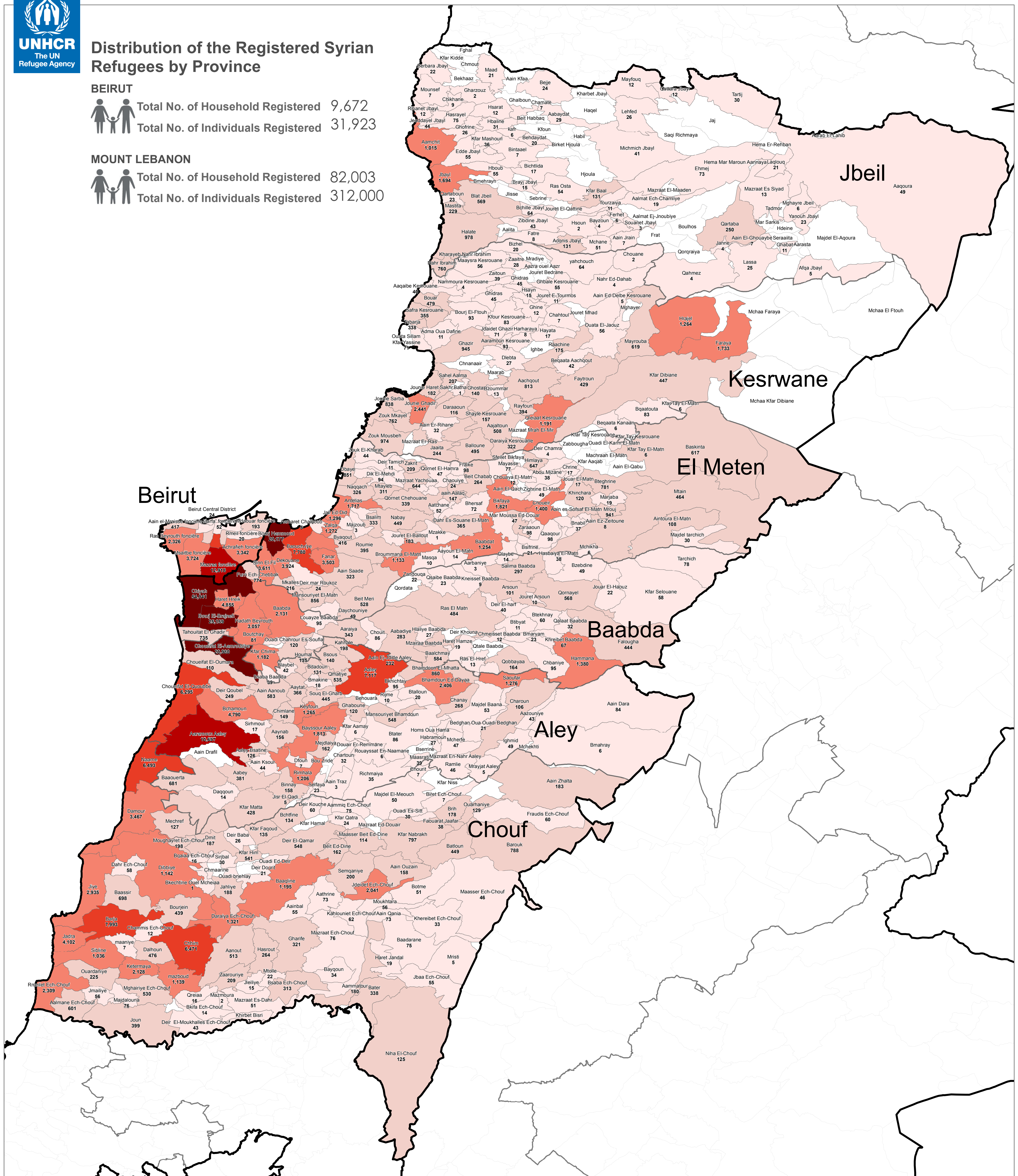
Kesrwane

El Meten

Baabda

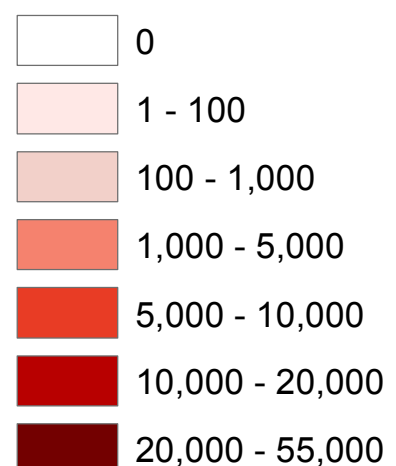
Aley

Chouf



#### Legend

##### No. of Refugees per Cadastral



Governmentate  
Caza

#### Notes

This map has been produced by UNHCR based on maps and material provided by the Government of Lebanon for UNHCR operational purposes. It does not constitute an official United Nations map. The designations employed and the presentation of material on this map do not imply the expression of any opinion whatsoever on the part of the Secretariat of the United Nations concerning the legal status of any country, territory, city or area or of its authorities, or concerning the delimitation of its frontiers or boundaries.

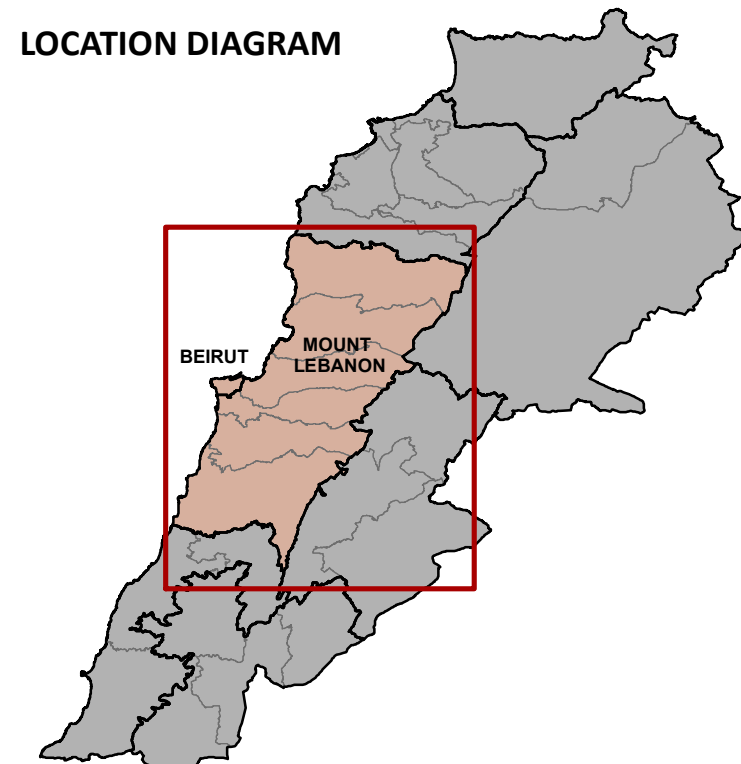
Data Sources:  
- Lebanese Border, Caza and Cadastral Boundaries: NPMLT 2005.  
- Geographic Projection WGS 1984

Registered Refugees Figures by UNHCR as of 30 June 2015.  
For more information contact Rana G. Ksaifi at [ksaifi@unhcr.org](mailto:ksaifi@unhcr.org)

GIS and Mapping by UNHCR. For information and updates  
contact Jad Ghosn: [ghosn@unhcr.org](mailto:ghosn@unhcr.org)  
Maroun Sader: [sader@unhcr.org](mailto:sader@unhcr.org)

NPMLT: National Physical Master Plan for the Lebanese Territory

#### LOCATION DIAGRAM



The No. indicates the registered refugees at the cadastral level

