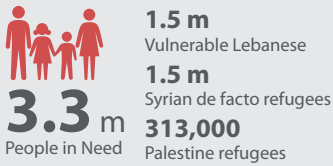


PLANNING FIGURES



2.2 million
Targeted for protection and direct assistance

2.9 million
Targeted for service delivery, economic recovery and community vices in 242 most vulnerable communities

\$2.14 billion
Funding required

SITUATION OVERVIEW

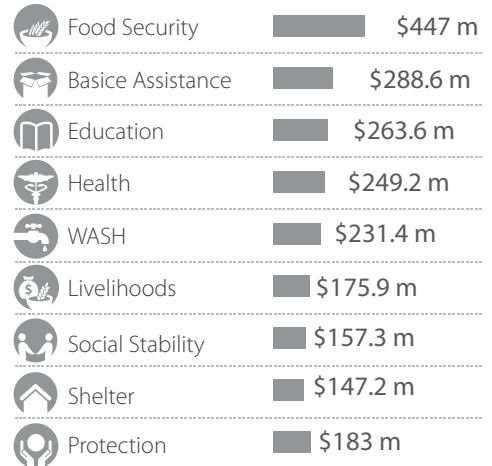
The month of April was marked by a continued deterioration in the overall protection situation for refugees and a persistent gap in food security. UNHCR was notified by the MoSA to de-register 1,471 Syrian refugees who entered after 5 January. The fourth consecutive month of reduced food assistance to \$19 instead of \$27 to Syrian refugees represents an overall loss of \$160 since January to meet the food security needs of a family of five. Child protection and sexual- and gender-based violence actors are planning a joint initiative on child marriage which continues to be reported as an issue of concern. The ongoing yearly livestock vaccination campaign which is supporting over 13,000 Lebanese farmers has so far vaccinated 416,000 animals. Despite facing difficulty to access safe water supply, the number of Lebanese and refugees contracting water-borne and sanitation-related diseases decreased significantly in April due in part to increased rehabilitation of water networks and safer water supply mechanisms. Over 5,000 vulnerable Lebanese benefitted from housing rehabilitation from shelter partners. IOM and the Lebanese High Relief Commission have registered over 12,000 Lebanese returnees, many of whom face similar issues as Lebanese poor and vulnerable Syrians. On a positive note, the MEHE finalized the new Accelerated Learning Programme which authorized children to take placement tests in 47 public schools. Health actors reported that some communicable diseases continue to be on the rise with 180 cases of mumps reported in the national communicable disease surveillance system. The social stability and livelihoods sectors continue to expand activities. Thirteen new community conflict mitigation mechanisms in the Bekaa this month and 19 new MSMEs and cooperatives received support through technology transfer and start-up cash grant and business support package. However, major gaps remain, especially in Tripoli where there are only two livelihoods partners for an area where 57% of Tripoli residents are deprived and 26% extremely deprived

HIGHLIGHT OF THE MONTH

- 55** livestock farmers supported with technical training and equipment
- 13,050** household was profiled for vulnerability
- 13,490** children and adolescents were enrolled in life-skills programs
- 20,423** children under 5 years old received vaccination
- 329** people, 92% of whom were women, benefited from market-based skills training
- 123** youth peacebuilding initiatives established with **2,759** youth participating
- 18,415** Individuals benefited from weatherproofing in informal settlements
- 2,448** persons with specific needs were supported through case management
- 7,047** boys and girls received psychosocial support
- 8,850** community members were sensitized on GBV and referral pathways

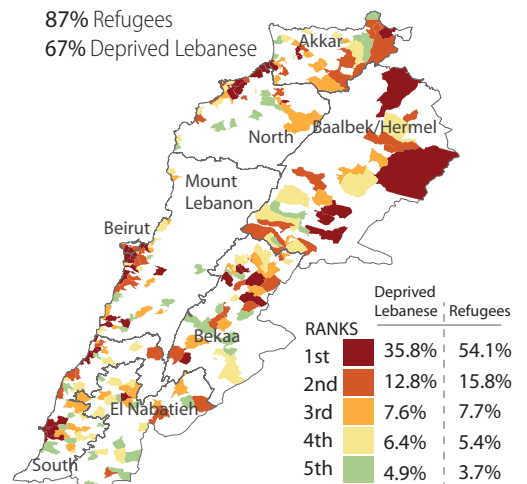
2015 FUNDING

Required Funds per Sector



NEW MOST VULNERABLE CADASTRES MAP

251 Cadastres
 87% Refugees
 67% Deprived Lebanese



NUMBER OF PARTNERS

of reporting partners per governorate by sector

GOVERNORATE	TOTAL	Education	Health	WASH	Livelihoods	Social Stability	Shelter	Protection	Other
Akkar	38	13	2	13	1	9	3	2	6
North (TS)	37	11	3	11	2	14	4	2	5
Bekka	38	11	4	13	3	10	5	1	4
Baalbek/Hermel	33	11	2	10	4	6	4	1	7
Mt Lebanon & Beirut	38	14	2	10	2	14	1	2	3
South	37	11	2	10	2	12	5	1	5
El Nabatieh	21	4	2	10	3	4	3	0	2