

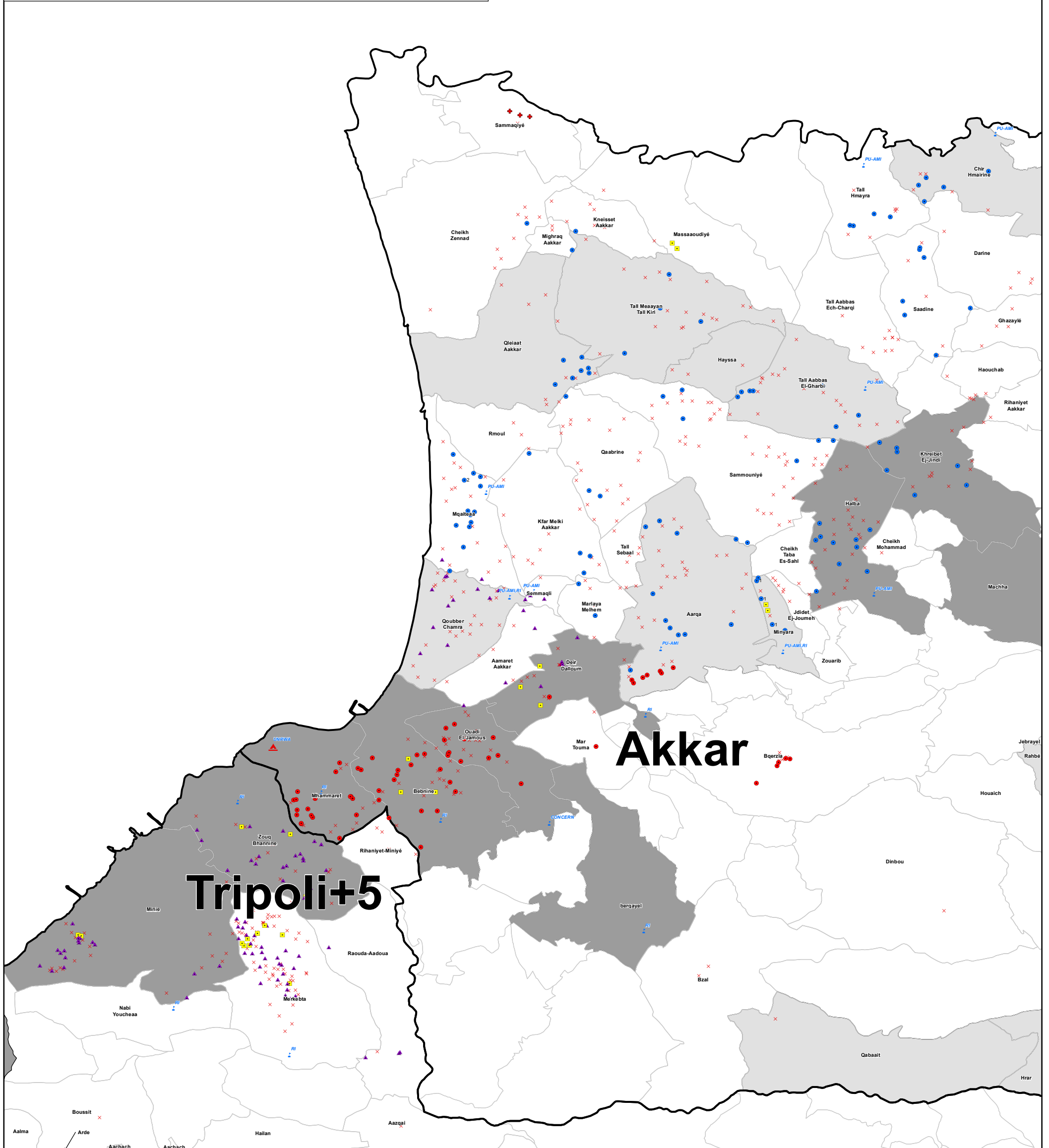
SYRIA REFUGEE RESPONSE

WASH Sector Working Group
National WASH Partner Presence
January 2015



WASH Sector Working Group
GIS and Mapping by UNHCR and UNICEF
For more information and updates contact
William Lavell wlavell@unicef.org
Date: 3/19/2015

Overview:
This map shows partner presence in informal settlements and other gateways in Lebanon based upon reporting of any type of WASH activity in ActivityInfo for January 2015. Additional partner location information has been added from the IAMP coordination tools from the Bekaa region to add a more complete picture of the situation. For additional mapping products and information please see the UNHCR Informational portal.
<http://data.unhcr.org>
For more detailed partner information please use the WASH Sector CartoDB online map and or size A0 national map.



UNICEF	CISP, PU-AMI	Lebanese Red Cross	NRC	PU-AMI, Solidarity	Collective Centre	242 Most Vulnerable Cadastrals 1st and 2nd Most Vulnerable 3rd, 4th and 5th Most Vulnerable Main Cities
No Coverage	CONCERN	MEDAIR	NRC / ACF	RI	Locality	
ACF	GVC	Mercy Corps	OXFAM	Solidarity	Municipality	
AVSI, CISP	INTERSOS	Mercy Corps / Oxfam	PU-AMI	WVI	Palestinian Camp	
CISP	LRC	Mercy Corps / WVI	PU-AMI, RI	SCI	School	

N
 0 3.5