



Daily Report

Arrivals and Departures:

At least 144,000 people, mostly of Afghan, Iraqi, and Syrian nationality have arrived in Greece so far in 2016. About 60 percent were women and children. Of those, more than half arrived to the island of Lesbos. Some 1,150 people a day continued to arrive in Greece from Turkey this month.

Few, if any, had planned to remain in Greece. However, with the closure of the Balkan route, nearly 50,000 people remained in formal and informal camps across the country according to government [information](#).

Condition of People:

As a result of the 18 March [agreement](#) between the EU Council and Turkey, the Greek authorities began implementing new procedures. Over the weekend, for people registered prior to 20 March, Greek authorities provided additional ferry transport from the islands of Lesbos and Chios to the mainland. Refugees and migrants arriving to the Greek islands

and registered as of 20 March are brought from the shores to the hotspots (on the islands where hotspots are established). Authorities in Athens confirmed hotspots are being converted into closed facilities and will be managed by the Hellenic Police.

On Saturday, 19 March, Government officials in Greece [signalled](#) that the implementation of the agreement between the EU and Turkey could occur gradually, with key details still to be developed on how people arriving from Turkey will be processed. Greece is expecting some 2,300 European experts, including asylum and migration officers, as well as translators, to help implement the [agreement](#).

Deaths at Sea: Two children drowned near the island of Rho as their inflatable boat collided with rocks.



Critical Developments

UNHCR is concerned that the EU-Turkey deal is being prematurely implemented without required safeguards in place in Greece. At present, Greece does not have the systems on any of the islands for assessing asylum claims. Greece also does not have yet the proper conditions in place for people to decently and safely accommodate people pending their decision.

The agreement stipulates that upon arrival in Greece, any person seeking asylum will receive an individual interview where their particular circumstances will be assessed. Each individual must be allowed to present her or his specific needs, heightened risks, and other factors which may preclude the proposed transfer to Turkey. The deal also foresees the right of the individual to appeal any decision to transfer him or her back to Turkey. In addition, family unity needs to be maintained, and any family links mitigating against transfer need to be respected. In the same vein, the best interests of children must be a primary consideration in any transfer process, particularly when it comes to circumstances of unaccompanied or separated children.

UNHCR plays a monitoring role, and is also providing counseling to people arriving on the Greek islands. It also assists the Greek authorities on the mainland with developing its reception capacity and with the determination of asylum claims. UNHCR will advocate for the protection of people whose return to Turkey would put them at risk or separate families.

UNHCR will not participate in any way in procedures or processes of returning persons in need of international protection to Turkey.

Weather Headlines

Settled and warm start to the week.

Deteriorating conditions as depression moves into the region from late on Tuesday and affecting the region until Thursday, leading to very strong winds and high seas on the Aegean.



Average Daily Arrivals and Trends Greece

29 February - 6 March
1,551
-39% from previous week



7-13 March
1,420
-8% from previous week



14 - 20 March
605
-57% from previous week

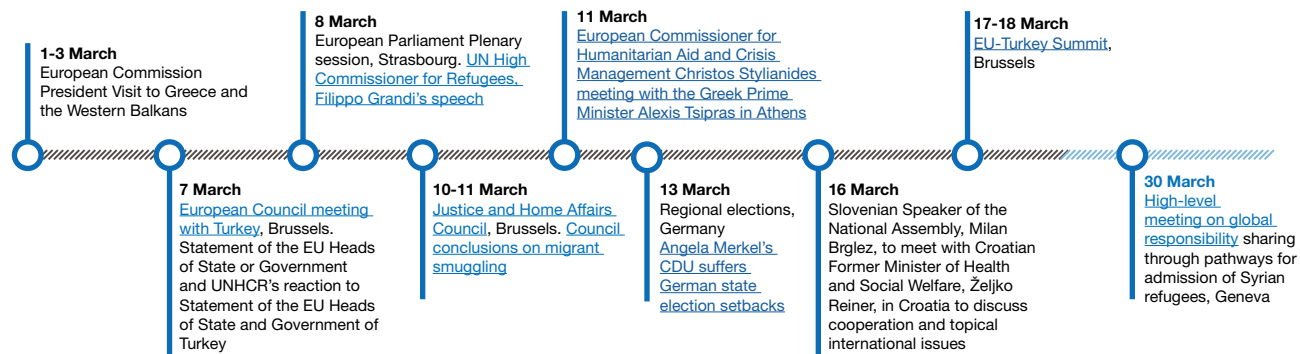


Monthly Average Daily Arrival
March (as of 20 March)
1,148
-40% from previous month





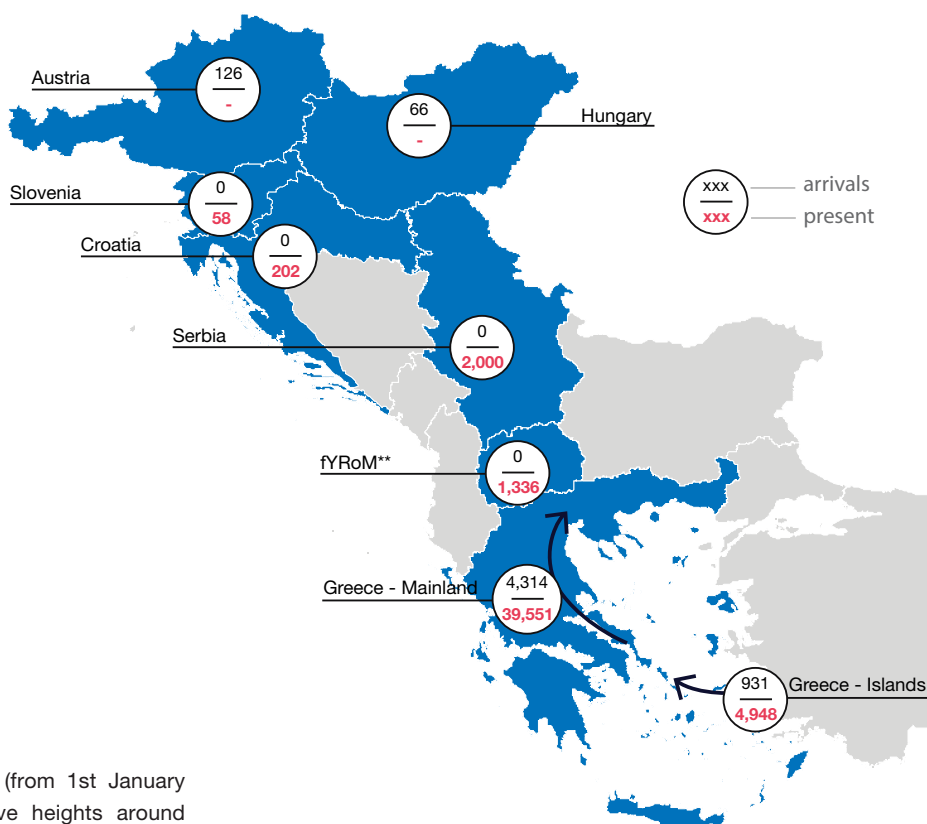
Past and Upcoming Meetings/Events



Estimated Arrivals and People Present* per Country Yesterday

* estimated people present currently not applying for asylum
** The former Yugoslav Republic of Macedonia (please note that the fYRoM abbreviation is used for design purposes)

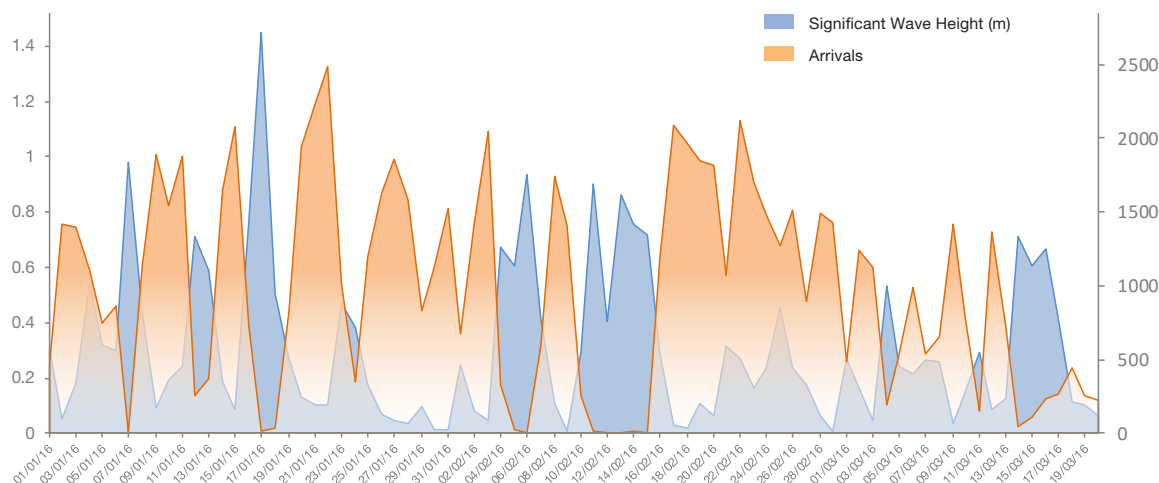
| | Arrivals | Present* |
|-------------------|----------|----------|
| Greece - Islands | 931 | 4,948 |
| Greece - Mainland | 4,314 | 39,551 |
| fYRoM** | 0 | 1,336 |
| Serbia | 0 | 2,000 |
| Croatia | 0 | 202 |
| Hungary | 66 | - |
| Slovenia | 0 | 58 |
| Austria | 126 | - |



Wave Height vs Arrivals to Lesbos

The graph highlights historical correlation (from 1st January 2016 until present) between average wave heights around Lesbos and number of registered arrivals to the island. The data shows a clear negative correlation: as the sea states become rougher, with increasing wave heights, the number of people travelling to Lesbos decreases. As sea states and wave heights reduce, the number of people travelling to Lesbos increases.

Applying this same negative correlation to forecast wave data allows us to make a forecast prediction on the number of people moving from Turkey to the Greek islands, giving a trend on whether these numbers will increase or decrease.





Social Media

Facebook Activity:

On 20 March, Facebook group [Better Days for Moria](#) posted about the transfer process of refugees and migrants from the olive grove volunteer site in Moria, Greece. Three buses of riot police were commissioned to relocate Pakistani nationals residing at the site. According to the Facebook group, which is operated by volunteers, sentiment amongst the remaining refugees since the decision to return refugees was finalised over the course of the weekend is one of nervousness; they "have very little information as to what the rest of the journey for the majority of [refugees] will look like".

Another volunteer Facebook page, [Information Point for Lesbos](#) Volunteers, set up for volunteers on the Greek island of Lesbos to exchange communication and general information, posted that ferry companies such as Blue Star Ferries and Hellenic Seaways are now profiting from "charging extra for refugees

that were forced to travel earlier than the travel they already bought the ticket for".

On the same page, there were messages in support of the decision by UNHCR not to participate in the transportation of refugees to closed facilities.

Current statistics for: #refugeesgr

33 tweets, 150 retweets per hour

Over 308,000 impressions per hour

77.78% of posts originated from Greece with 41% being in Greek

18-20 March Summary of average activity for #refugees

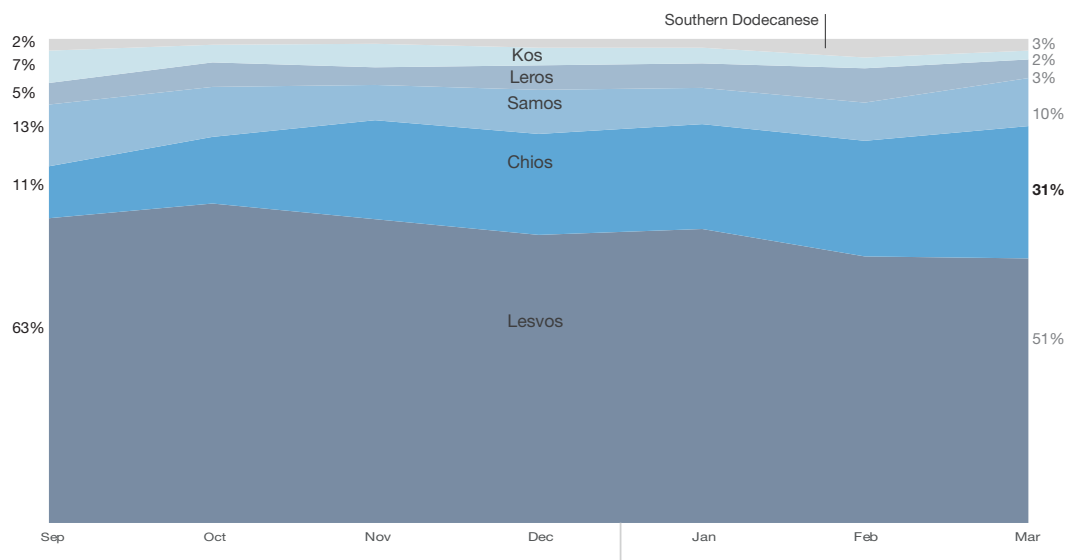
Average no. of tweets per day: 2,467

Average no. of retweets per day: 6,933

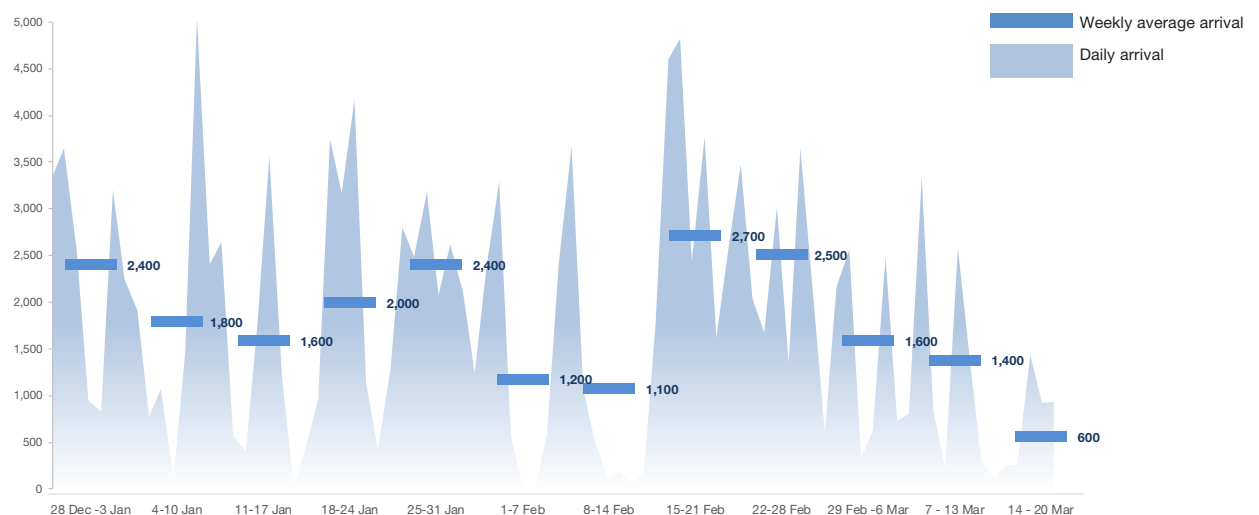
Average no. of impressions per day: 2,269



Distribution of monthly arrivals to each Greek island September to 20 March



Daily and Weekly Average Arrivals to Greece 28 December to 20 March





Weather Forecast Greece - Slovenia

Key locations crossed by refugees



Weather Assessment

- Settled, warm and dry conditions continuing across the region through much of Tuesday. High level thunderstorms pushing across the region through the evening, although only small amounts of rain expected to reach the ground.
- Marked increase in southerly winds in the Aegean through Tuesday, perhaps reaching gale force by evening, leading to rough seas, which will make travel by small boats dangerous.
- Much wetter conditions expected into Wednesday particularly in NE Greece, with the potential for localised peaks of 10-40mm in northern Greece around and to the north of Kavala. Very poor conditions on the Aegean with possible storm force winds and very rough seas throughout the day.
- Cooler with further rain and thunderstorms on Thursday, particularly affecting western coasts of Greece and Turkey. Winds and seas easing across the Aegean.

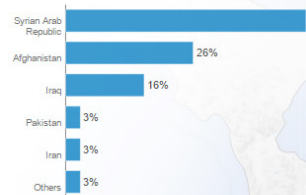


Annex 1 Key Figures from the Portal

Increasing numbers of refugees and migrants take their chances aboard unseaworthy boats and dinghies in a desperate bid to reach Europe. The vast majority of those attempting this dangerous crossing are in need of international protection, fleeing war, violence and persecution in their country of origin. Every year these movements continue to exact a devastating toll on human life.

Top-10 nationalities of Mediterranean sea arrivals

Top-10 nationalities represent 100% of the sea arrivals based on arrivals since 1 Jan 2016



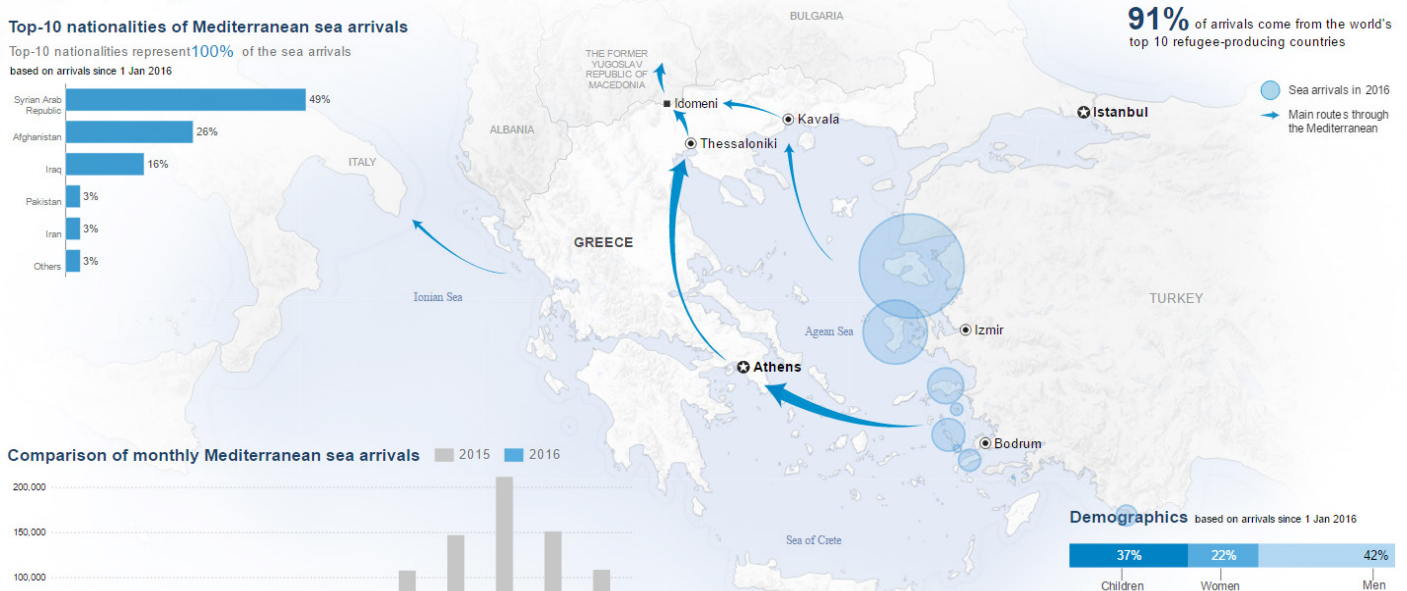
Comparison of monthly Mediterranean sea arrivals



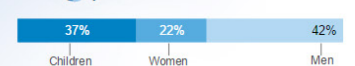
144,149 arrivals by sea in 2016

856,723 arrivals by sea in 2015

91% of arrivals come from the world's top 10 refugee-producing countries



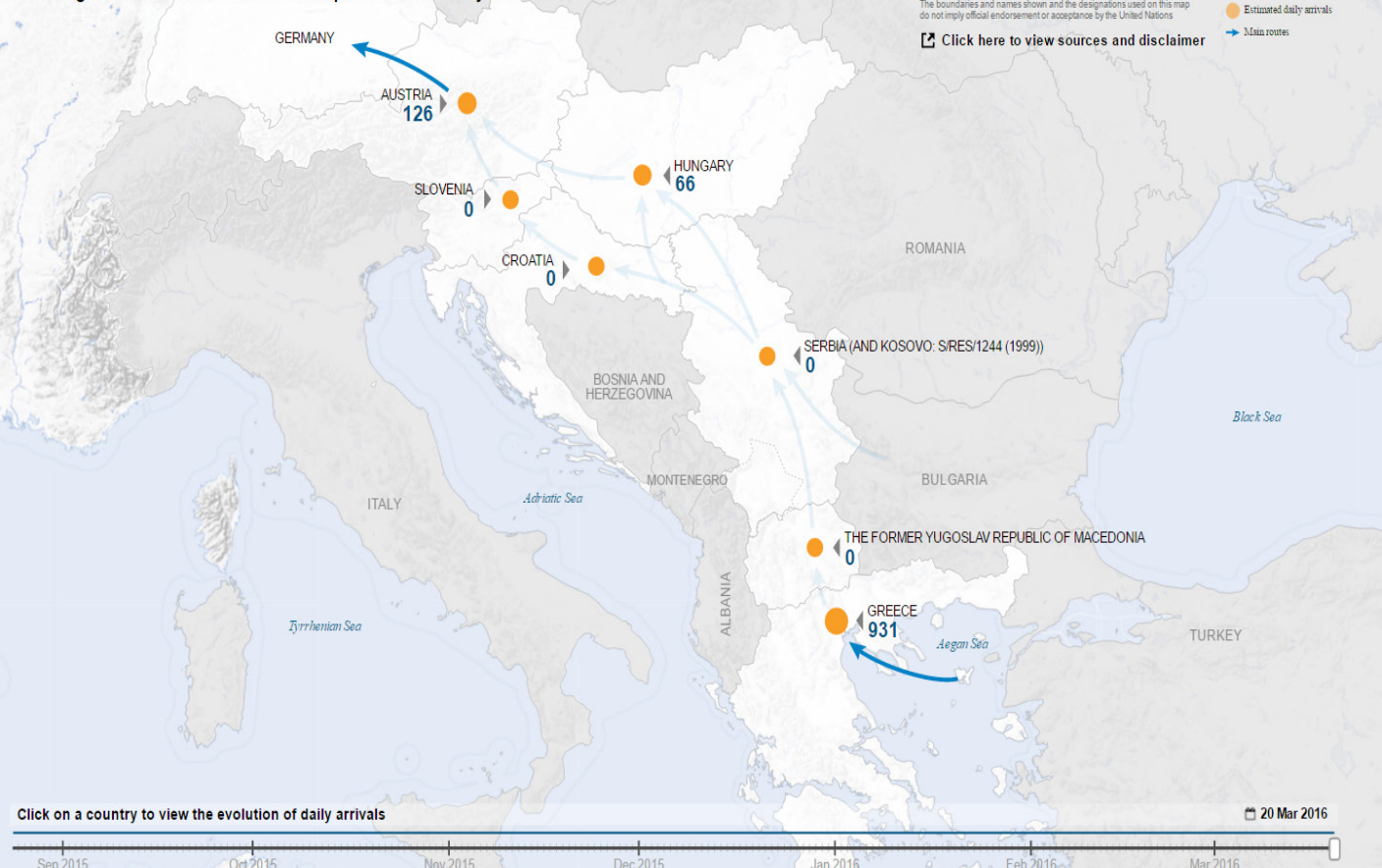
Demographics based on arrivals since 1 Jan 2016



*Serbia (AND KOSOVO: S/RES/1244 (1999))
The boundaries and names shown and the designations used on this map do not imply official endorsement or acceptance by the United Nations

[Click here to view sources and disclaimer](#)

Following the humanitarian crisis in Europe: Estimated daily arrivals



Click on a country to view the evolution of daily arrivals

20 Mar 2016