



## Daily Report

### Arrivals and Departures:

Greek government figures showed that 51,879 refugees and migrants were present in Greece. During a meeting held yesterday, acknowledging the teething challenges, EU migration commissioner Dimitris Avramopoulos mentioned that the influx would not be reduced “in a night”; whilst Greek Prime Minister, Alexis Tsipras, questioned the ability of putting the agreement into practice if thousands of refugees continued to arrive in Greece.



### Critical Developments

The first of some 2,500 personnel from other European Union countries is expected to arrive to Greece as of March 28. The EU's border agency, Frontex, asked member-states and Schengen associated countries on Monday to provide 1,500 police officers and 50 return and readmission experts to support Greece in returning migrants to Turkey. Frontex currently has 734 personnel in Greece.

According to the agreement to be implemented, staff consisting of police officers, asylum case officers, and judges and interpreters will be sent to the Greek Islands to process refugee claims and returns. The first wave of personnel is expected to arrive next Monday, with the first ferries carrying asylum seekers to Turkey expected to set sail a week later, as of 4 April. For this to be possible, specialist asylum caseworkers hearing individual cases is a paramount condition.

Although EU member states pledged to provide more than half the required staff, Greek authorities are expected to have 1,500 staff in place at a time when public sector recruitment is frozen given the country's financial crisis.

### Response

The European Commission recommended to allocate 54,000 places for resettlement of Syrians from Turkey. This proposal complements the existing EU resettlement scheme for 22,504 people which was agreed in July 2015, of which 18,000 places remain available. According to the EU Commission, the 54,000 places foreseen for reattribution from the relocation to the

### Condition of People:

In the past few days, people previously present on the Greek Islands (nearly 6,000 refugees) who arrived prior to 20 March were transported by ferry from Lesbos, Chios, Rhodos and Kos islands to Piraeus, Elefsina and Kavala. People will be further transported to hosting centres in the region of Attica. 4,840 refugees are temporarily accommodated within the port of Piraeus, according to port authorities.

resettlement scheme constitute the currently non-allocated reserve of commitments under the existing Council Decision. After welcoming a first planeload of 64 refugees flown directly from Greece on March 7, and 149 refugees who arrived to Portugal under the relocation plan, [according to media](#) reports, the Portuguese government agreed to receive 10,000 refugees and migrants under the relocation scheme. On 8 June 2015, the Commission adopted a proposal on the European Resettlement Scheme, which was followed by an agreement among the Member States on 20 July to resettle 22,504 persons in clear need of international protection, in line with the figures put forward by UNHCR.

[UNHCR redefined its role in Greece as EU-Turkey deal came into effect.](#) UNHCR has till now been supporting the authorities in the so-called “hotspots” on the Greek islands, where refugees and migrants were received, assisted, and registered. Under the new provisions, these sites have now become closed detention facilities. Accordingly, and in line with our policy on opposing mandatory detention, we have suspended some of our activities at all closed centres on the islands. This includes provision of transport to and from these sites. However, UNHCR will maintain a presence to carry out protection monitoring to ensure that refugee and human rights standards are upheld, and to provide information on the rights and procedures to seek asylum.

### Weather Headlines

Deteriorating conditions as depression moves into the region tonight and affects the region until Thursday, leading to very strong winds and high seas on the Aegean.



### Average Daily Arrivals and Trends Greece

7-13 March  
**1,420**  
-8% from previous week



14 - 20 March  
**605**  
-57% from previous week



21 March (new week)  
**880**  
+46% from previous week

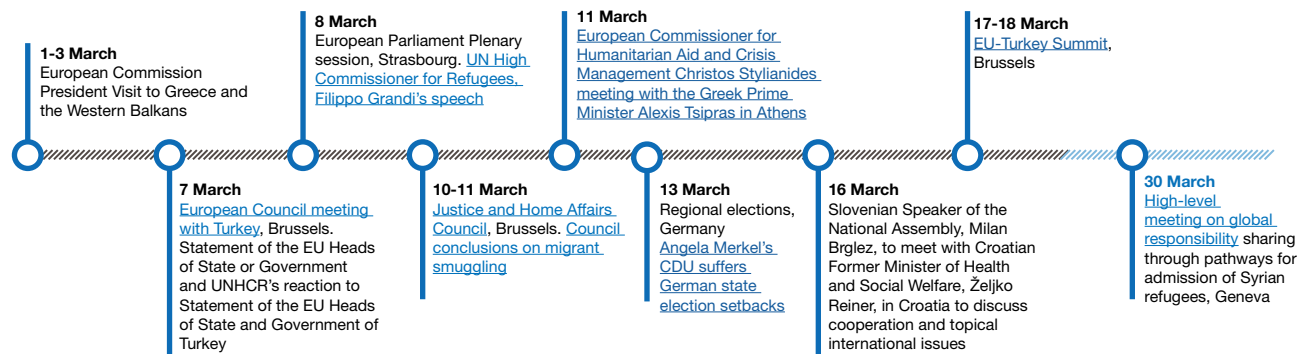


Monthly Average Daily Arrival  
March (as of 21 March)  
**1,135**  
-40% from previous month





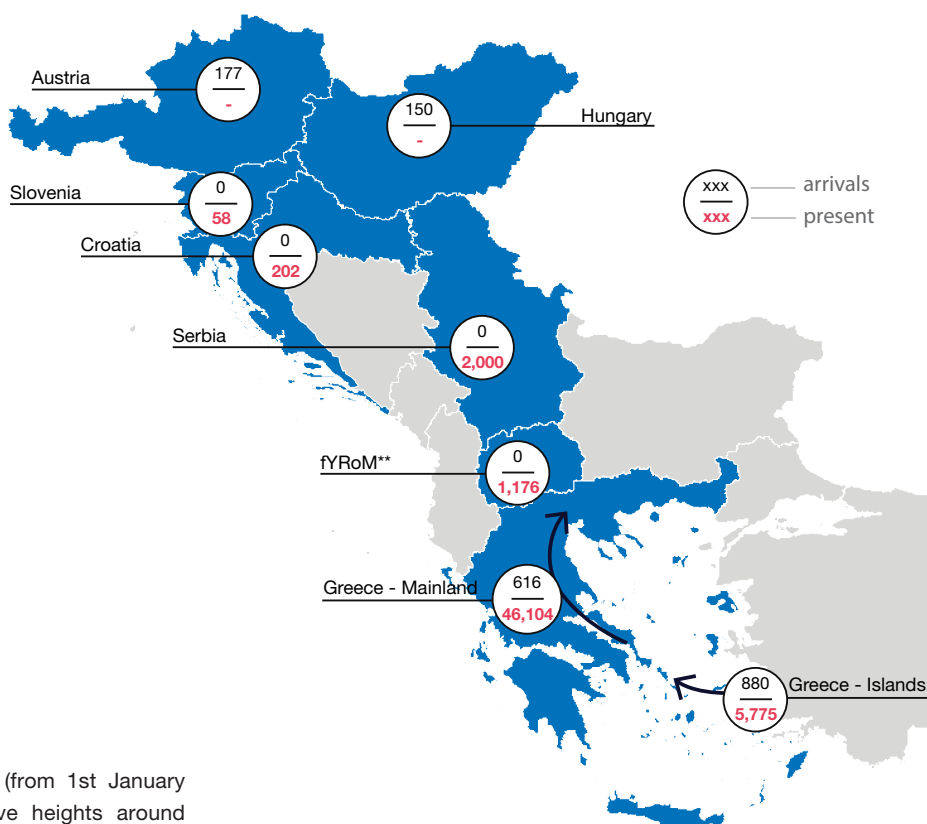
## Past and Upcoming Meetings/Events



## Estimated Arrivals and People Present\* per Country Yesterday

\* estimated people present currently not applying for asylum  
\*\* The former Yugoslav Republic of Macedonia (please note that the fYRoM abbreviation is used for design purposes)

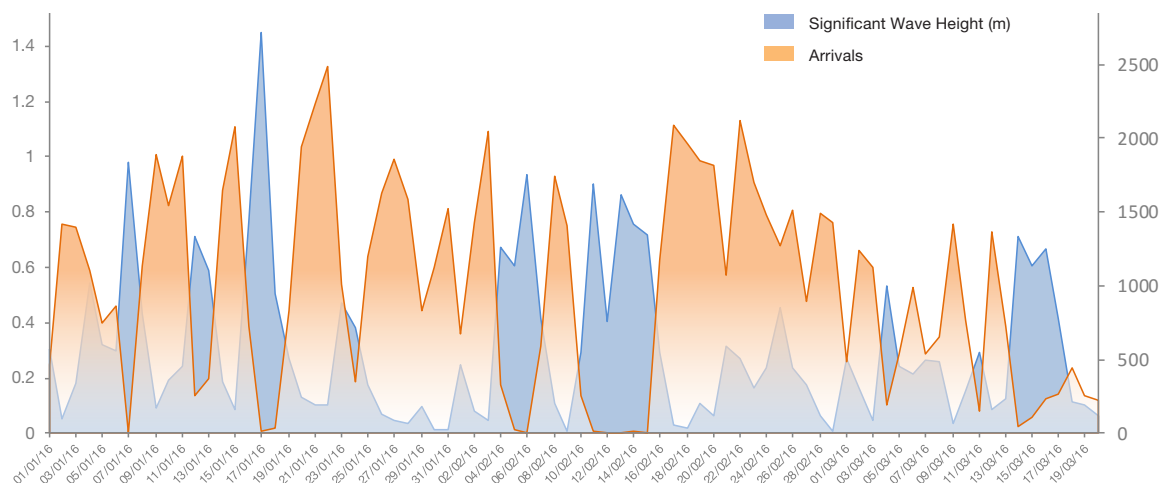
	Arrivals	Present*
Greece - Islands	880	5,775
Greece - Mainland	616	46,104
fYRoM**	0	1,176
Serbia	0	2,000
Croatia	0	202
Hungary	150	-
Slovenia	0	58
Austria	177	-



## Wave Height vs Arrivals to Lesbos

The graph highlights historical correlation (from 1st January 2016 until present) between average wave heights around Lesbos and number of registered arrivals to the island. The data shows a clear negative correlation: as the sea states become rougher, with increasing wave heights, the number of people travelling to Lesbos decreases. As sea states and wave heights reduce, the number of people travelling to Lesbos increases.

Applying this same negative correlation to forecast wave data allows us to make a forecast prediction on the number of people moving from Turkey to the Greek islands, giving a trend on whether these numbers will increase or decrease.





## Social Media

### Facebook Activity:

Facebook group [Forgotten in Idomeni](#) posted about the desperate measures some refugees have begun resorting to as a man threatened to take his own life.

### Twitter Activity:

[Natasha Tsangarides](#) posted: “#Moria: for new #refugeesgr, they are confiscating refugees mobile phones and personal items on arrival”

[Ced Jereb](#) posted about some of the ways in which refugee children are being kept entertained during the crisis: “#Refugees kids are laughing when the funny clown plays ukulele in #Moria Camp”

### Current statistics for: #moria

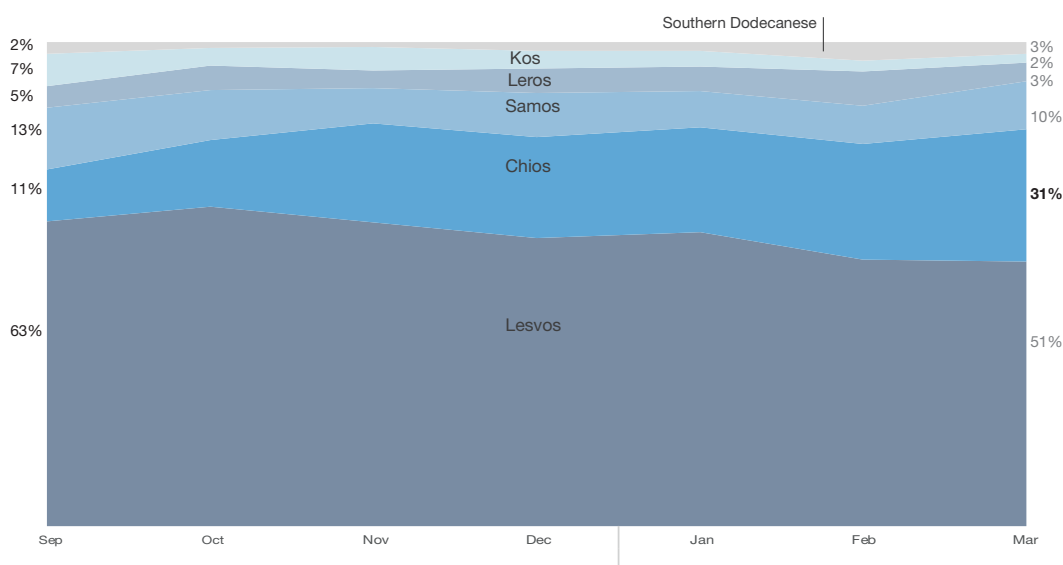
8 tweets, 25 retweets per hour

Over 6,950 impressions per hour

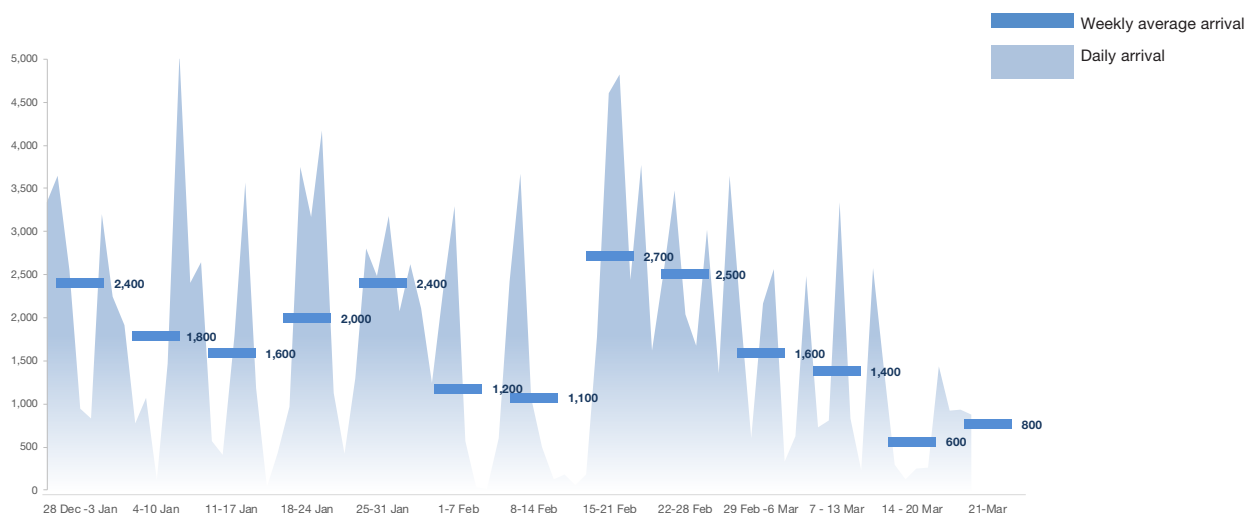
Yesterday saw the highest level of activity using #moria; there were 200 individual tweets and 900 retweets. Other related hashtags include: #refugees, #greece, and #lesvos



## Distribution of monthly arrivals to each Greek island September to 20 March



## Daily and Weekly Average Arrivals to Greece 28 December to 21 March





## Weather Forecast Greece - Slovenia

Key locations crossed by refugees



## Weather Assessment

- Settled, warm and dry conditions continuing across the region through much of today. High level thunderstorms pushing across the region through this evening, although only small amounts of rain expected to reach the ground.
- Marked increase in southerly winds in the Aegean overnight, perhaps reaching gale force by morning, leading to rough seas, which will make travel by small boats dangerous.
- Much wetter conditions expected into Wednesday particularly in NE Greece, with the potential for localised peaks of 20-40mm in northern Greece around and to the north of Kavala. Very poor conditions on the Aegean with possible storm force winds and very rough seas throughout the day.
- Cooler with further rain and thunderstorms on Thursday, particularly affecting western coasts of Greece and Turkey. Winds and seas easing across the Aegean.
- Remaining unsettled across the Aegean into the weekend, but settled and cooler further North.

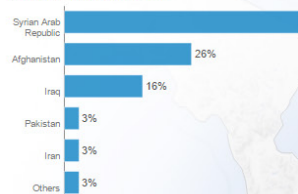


## Annex 1 Key Figures from the Portal

Increasing numbers of refugees and migrants take their chances aboard unseaworthy boats and dinghies in a desperate bid to reach Europe. The vast majority of those attempting this dangerous crossing are in need of international protection, fleeing war, violence and persecution in their country of origin. Every year these movements continue to exact a devastating toll on human life.

### Top-10 nationalities of Mediterranean sea arrivals

Top-10 nationalities represent 100% of the sea arrivals  
based on arrivals since 1 Jan 2016

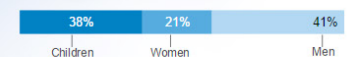


147,437 arrivals by sea in 2016

856,723 arrivals by sea in 2015

91% of arrivals come from the world's top 10 refugee-producing countries

### Demographics based on arrivals since 1 Jan 2016



\*Serbia (AND KOSOVO) SRES/1244 (1999)

The boundaries and names shown and the designations used on this map do not imply official endorsement or acceptance by the United Nations

[Click here to view sources and disclaimer](#)



## Europe Refugee Emergency

### Site locations in Greece

As of 22 March 2016 08:00 a.m. EET

