



## Daily Report

### Arrivals and Departures:

For the first time in 2016, there were no arrivals to the Greek shores on 23 March. However, 269 people were registered on the island of Lesbos. There was particularly poor weather during this period, which is likely to improve over the coming days. Based on media sources, 243 persons were apprehended/rescued on 21-22 March 2016 at Turkey's land and sea borders.

Reportedly, a total of 49 people arrived from Bulgaria and eight from the former Yugoslav Republic of Macedonia through green borders. In addition, some 100 people left Sid towards the border with Hungary.

### Condition of People:

Greek Minister of Health, Andreas Xanthos, visited the sites in northern Greece (Nea Kavala and Herso), as well as the makeshift settlements in Eidomeni. While Xanthos found the

situation in Herso and Nea Kavala satisfactory, he highlighted the conditions in Eidomeni as 'dramatic' in light of the dire living conditions. He stressed the need for urgent increased coordination between relevant actors and the gradual evacuation of the settlements.

UNHCR teams visited the closed facilities on Lesbos to assess reception conditions and the profiles of the people present; mainly Afghan, Iraqi, and Syrian nationals amongst others. They continued to provide information sessions and to identify individuals with specific needs on both the islands as well as the mainland.

According to media and in light of the growing needs, the army began to provide food to people present at Piraeus Port as of 23 March.



## Critical Developments

UNHCR plans to support site management on mainland Greece, and continues to support possible relocation sites in cooperation with authorities. Across the islands and mainland, UNHCR is continuing Protection monitoring, information sessions, and ongoing identification of people with specific needs. In order to fill critical gaps in some of the mainland sites, UNHCR has strengthened the delivery of shelter and distribution of NFIs. Following Frontex's call to EU Member States to provide 1,500 additional police officers and 50 readmission experts to support Greece in returning people to Turkey, Member States have so far offered 396 police officers and 47 readmission experts.

There are estimated to be over 5,000 PoCs currently at Piraeus port, with people arriving from various other sites. UNHCR is about to construct two rub halls in order to provide a space for food distributions. The army commenced food distributions to people within Piraeus on 23 March. In Eidomeni all organizations remain on site, and food distributions have resumed. Critical gaps remain in WASH, Health, Protection, and Shelter. The site remains overcrowded. Site assessments are ongoing of the other sites on the mainland, of which there are now 29 emergency reception sites. Critical gaps remain in the provision of basic services in many of the sites.

On the islands, riots continue on Chios within the registration area. The facility is locked, though people can walk freely in the accommodation area. In Samos, no detention order, nor

administrative decisions have been issued for arrivals after 19 March so far. Interest in asylum is increasing in Samos, with information needs remaining high.

During a telephone conversation with German Chancellor Angela Merkel, the President of the former Yugoslav Republic of Macedonia renewed his request for the German Federal Border Police to be part of the EU police contingent present at the southern and northern border of the former Yugoslav Republic of Macedonia. He further reiterated the need for political and increased logistical support by the European Commission.

Meanwhile, Polish authorities stated that they will ignore their commitment made at a 2015 EU summit for security reasons. "I say very clearly that I see no possibility at this time of immigrants coming to Poland," Prime Minister Beata Szydło [said on Wednesday](#).

### Weather Headlines

Deteriorating conditions as depression moves into the Aegean today and tomorrow, leading to gale to severe gale force winds and high seas on the Aegean.

Cooler trend, particularly across the north of the region, from Thursday and into the Easter weekend with strong to gale force winds for a time.



## Average Daily Arrivals and Trends Greece

7-13 March  
**1,420**  
-8% from previous week



21- 23 March  
**563**  
-7% from previous week



14 - 20 March  
**605**  
-57% from previous week

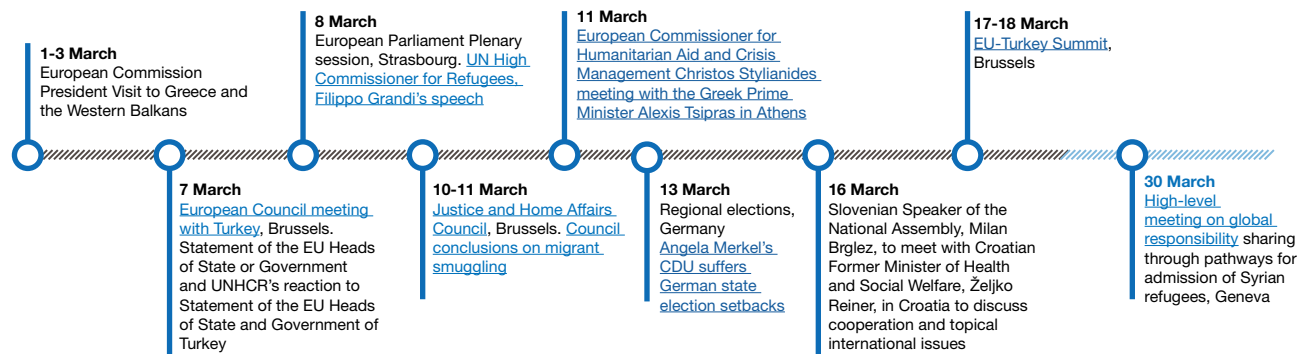


Monthly Average Daily Arrival  
March (as of 23 March)  
**1,071**  
-44% from previous month





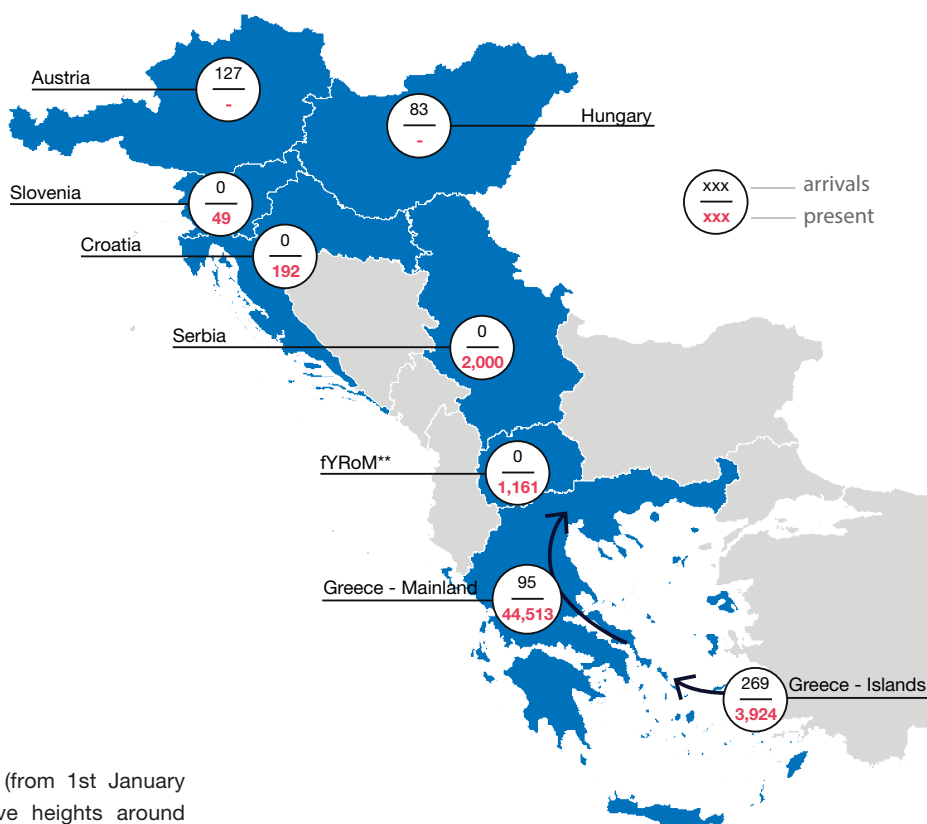
## Past and Upcoming Meetings/Events



## Estimated Arrivals and People Present\* per Country Yesterday

\* estimated people present currently not applying for asylum  
\*\* The former Yugoslav Republic of Macedonia (please note that the fYRoM abbreviation is used for design purposes)

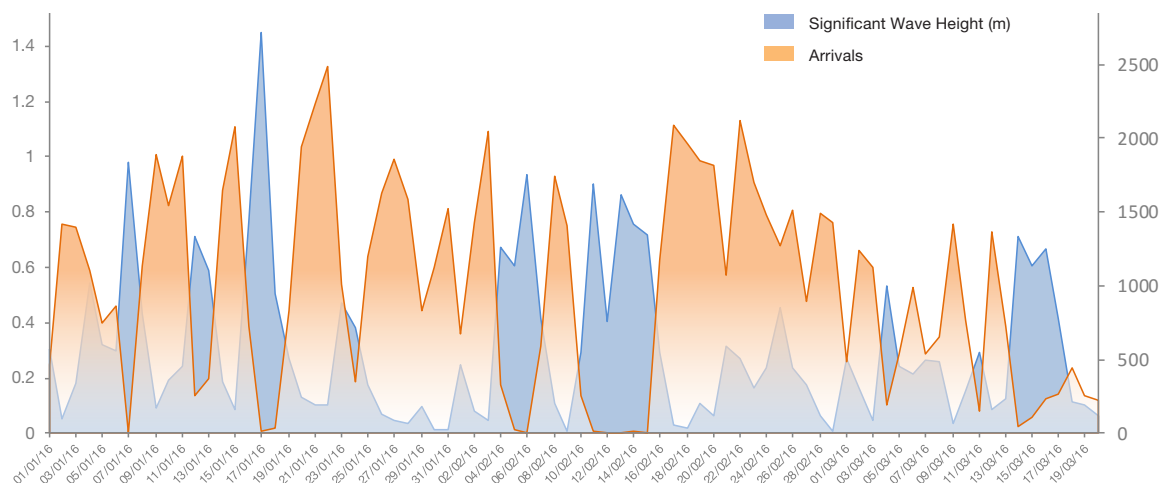
|                   | Arrivals | Present* |
|-------------------|----------|----------|
| Greece - Islands  | 269      | 3,924    |
| Greece - Mainland | 95       | 44,513   |
| fYRoM**           | 0        | 1,161    |
| Serbia            | 0        | 2,000    |
| Croatia           | 0        | 192      |
| Hungary           | 83       | -        |
| Slovenia          | 0        | 49       |
| Austria           | 127      | -        |



## Wave Height vs Arrivals to Lesbos

The graph highlights historical correlation (from 1st January 2016 until present) between average wave heights around Lesbos and number of registered arrivals to the island. The data shows a clear negative correlation: as the sea states become rougher, with increasing wave heights, the number of people travelling to Lesbos decreases. As sea states and wave heights reduce, the number of people travelling to Lesbos increases.

Applying this same negative correlation to forecast wave data allows us to make a forecast prediction on the number of people moving from Turkey to the Greek islands, giving a trend on whether these numbers will increase or decrease.





## Social Media

### Facebook Activity:

In response to the image of a [refugee boy holding a "sorry for Brussels" sign](#), Facebook group [Are You Syrious?](#) posted a video showing reactions from Finnish people.

Some held apologetic signs which included messages such as "sorry for closing our borders"; "sorry for turning our back on you"; "sorry for Alan Kurdi".

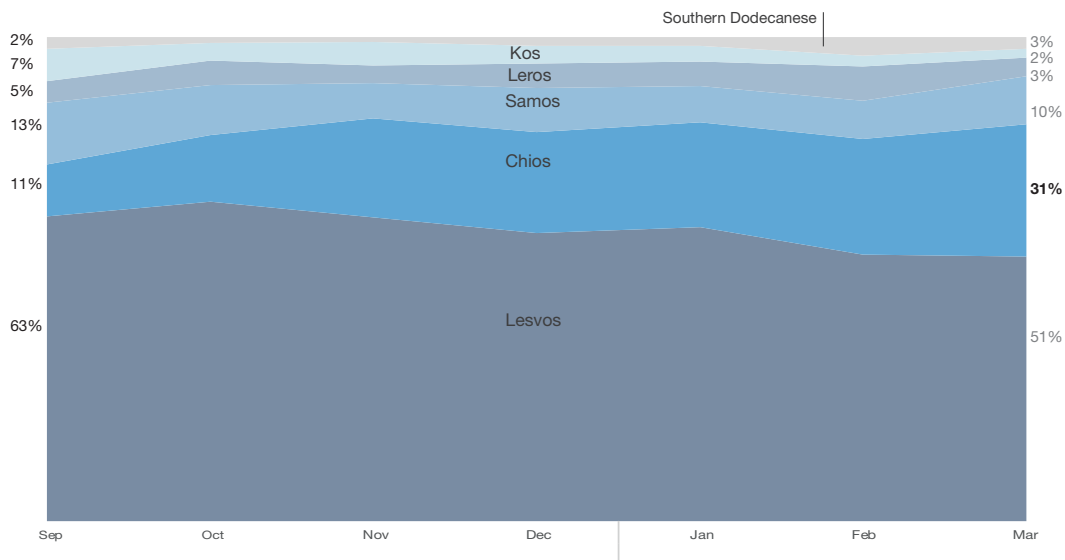
### Twitter Activity:

The topic of Syria trended on Twitter, gaining more than 82,000 tweets. The majority of posts commented on Russia's involvement in decision-making in Syria. A trend was observed of people posting more generally on the Syrian government's activities with regards to the hostile situation in the IS-held city of Palmyra, Homs.

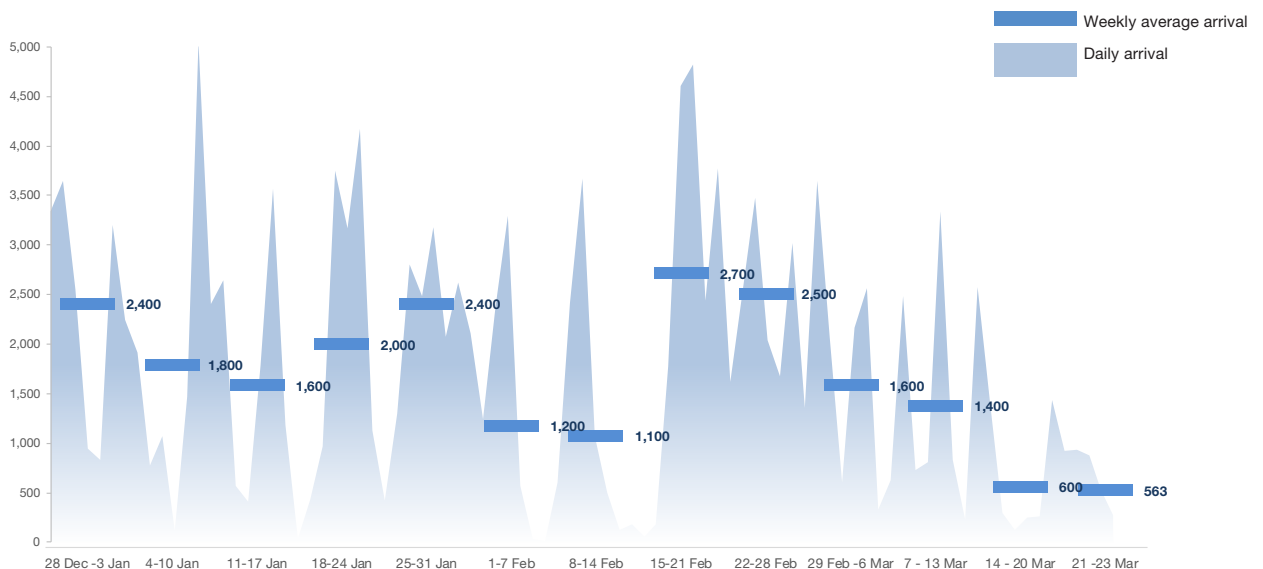
[Frontex](#): "#Frontex calls on EU states to offer more police officers to [support Greece](#) in returning migrants to Turkey".



## Distribution of monthly arrivals to each Greek island September to 20 March



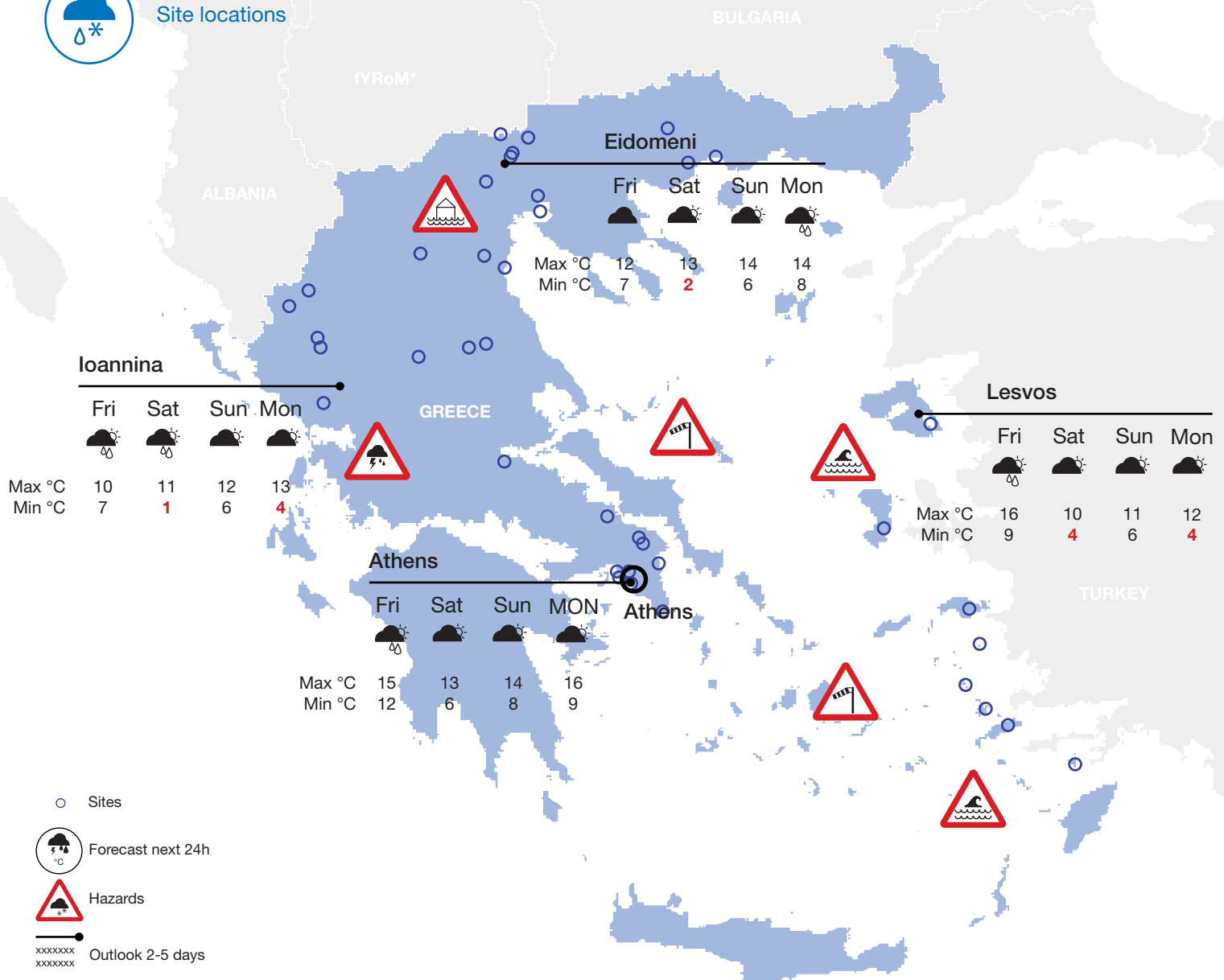
## Daily and Weekly Average Arrivals to Greece 28 December to 23 March





## Weather Forecast Greece

Site locations



### Tomorrow – Friday 25th March

Showers gradually petering out and becoming focused on Greece by the afternoon, with drier conditions spreading across the Former Yugoslav Republic of Macedonia.

Feeling colder across the region, with night time minima falling into low single figures away from the islands. Winds continuing to ease across the area, with seas calming.

### Saturday 26th March

Further light showers expected across southern Greece and the Aegean, but dry and fine elsewhere.

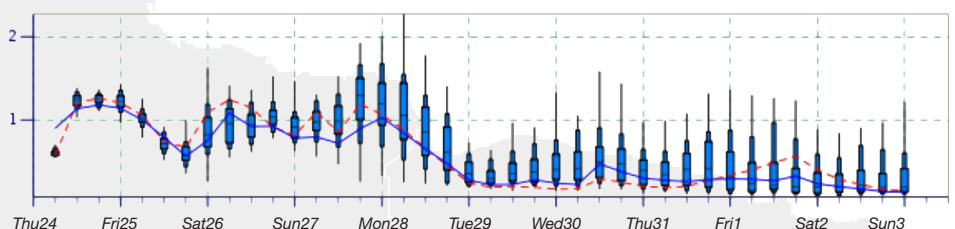
### Outlook Sunday 27th - Tuesday 29th March

Fine and dry across the region on Sunday and Monday morning, but remaining cooler than average.

Winds strengthening fresh to strong from the north especially on Sunday, leading to choppy seas and significant wind chill, especially on the southern islands.

Patchy rain moving in from the north across the Former Yugoslav Republic of Macedonia and northern Greece on Monday afternoon or evening, continuing through Tuesday.

Winds easing again on Monday, with seas calming again.



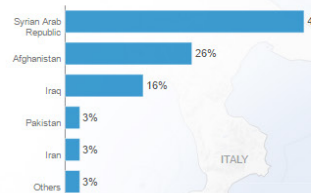


## Annex 1 Key Figures from the Portal

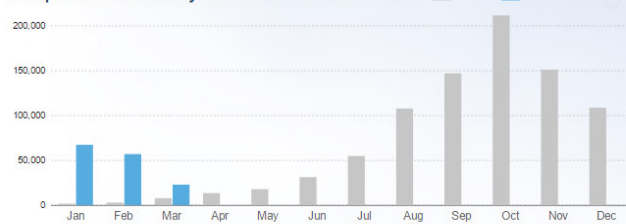
Increasing numbers of refugees and migrants take their chances aboard unseaworthy boats and dinghies in a desperate bid to reach Europe. The vast majority of those attempting this dangerous crossing are in need of international protection, fleeing war, violence and persecution in their country of origin. Every year these movements continue to exact a devastating toll on human life.

### Top-10 nationalities of Mediterranean sea arrivals

Top-10 nationalities represent 100% of the sea arrivals based on arrivals since 1 Jan 2016



### Comparison of monthly Mediterranean sea arrivals

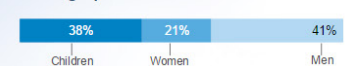


147,437 arrivals by sea in 2016

856,723 arrivals by sea in 2015

91% of arrivals come from the world's top 10 refugee-producing countries

### Demographics based on arrivals since 1 Jan 2016



\*Serbia (AND KOSOVO: SIRE/1244 (1999))  
The boundaries and names shown and the designations used on this map do not imply official endorsement or acceptance by the United Nations  
[Click here to view sources and disclaimer](#)

## Europe Refugee Emergency

Site locations in Greece  
As of 24 March 2016 08:00 a.m. EET

