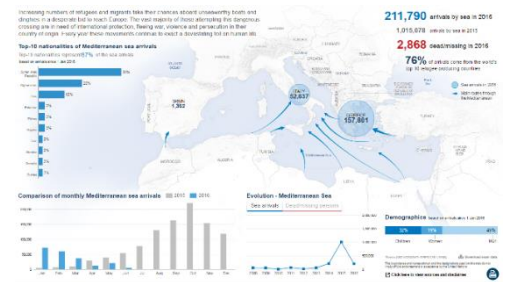


GREECE

UNHCR– INFORMATION MANAGEMENT PRODUCTS

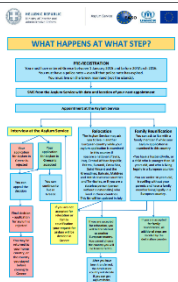
06 July 2016 (Next update: 13 July 2016)



Highlights

Below you can find and download all documents uploaded on UNHCR Greece WebPortal ([click on the file title to download](#)). You can also access the list of all documents directly online by visiting: <http://data.unhcr.org/mediterranean/country.php?id=83>

Pre-registration handouts, brochure and posters:



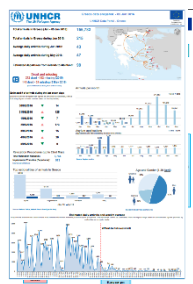
Between the end of May and the end of July 2016, teams from the Asylum Service will visit sites where refugees and migrants live on the Greek mainland. This process is called “pre-registration”. The purpose of pre-registration is to give an opportunity for POCs to ask for, if they are afraid to return to their home country because they fear for their life or safety. Depending on individual case, it is also possible that POCs can ask to be transferred to another European country or join a family member in another European country. The first phase of the Pre-registration exercise has started on Thursday 09 June 2016, in Oreiokastro and Thessaloniki Port.

Pre-registration documents are uploaded under guidance tab on the WebPortal in Arabic, English, Greek, French, Sorani and Kurmanji.

Below is the updates document for this month:

- [What is Pre-Registration Handout \(Greek\)](#) , [French](#), and [other](#) (including: Sorani and Kurmanji).
- [Why you should Pre-Register Poster \(Greek\)](#) , [French](#), and [other](#) (including: Sorani and Kurmanji).
- [Family Reunification Poster \(Greek\)](#) and [French](#).
- [Relocation Poster \(Greek\)](#) and [French](#).

Daily arrivals, trends and Sites map:



Daily estimates : A daily report that present the number of arrivals per location. The report covers the period from 01 Jan 2016 till 04 July 2016. This document is uploaded daily on the web portal.

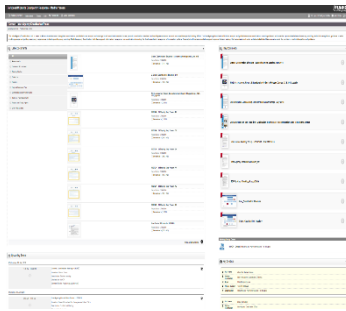
Greece sites : A daily map that represents presence and capacity per every site. The figures are based on Governmental figures from the Coordination Centre for the Management of the Refugee Crisis. This document is uploaded daily on the web portal.

Daily Arrival Greece: A daily snapshot of arrival data in Greece. This product is uploaded on the web portal.

For more information, please contact: Hawraa Harkous, Information Management Officer (UNHCR Greece)

Email: HARKOUS@UNHCR.ORG; Mobile number: +30-6951676545

Greece Web portal sector page:



To enhance and strengthen coordination, provide technical support and oversight in all coordination related issues, promote coordination standards and quality assurance and support country-wide capacity building efforts; a page for the Inter-agency working and per each sector on the Greece WebPortal has been structured and published.

Below is the direct link of every working group:

- [Inter-agency webpage](#)
- [Food Working Group webpage](#)
- [Shelter and NFIs Working Group webpage](#)
- [Cash Working Group webpage](#)
- [Communication With Community Working Group webpage](#)
- [Site Management Support Working Group webpage](#)
- [Protection Working Group webpage](#)
- [Child protection Working Group webpage](#)
- [WASH Working Group webpage](#)

Weekly Accommodation/ Relocation Report:



At the EU Leaders' Summit on 25 October 2015, UNHCR committed to establish 20,000 accommodation places and to support the Government of Greece's efforts to increase their reception capacity for asylum-seekers by 30,000, yielding to a total of 50,000 reception places. People seeking asylum in Greece, prioritizing the most vulnerable. A [weekly report](#) that presents the information contained in the database is published. The direct link on the webportal is:

<http://data.unhcr.org/mediterranean/download.php?id=1601>

For more information, please contact: Hawraa Harkous, Information Management Officer (UNHCR Greece)

Email: HARKOUS@UNHCR.ORG; Mobile number: +30-6951676545