



HIGHLIGHTS

36,278

refugees are actually in the camp out of

54,298

persons of concern registered

58%

of children, including

393

Identified separated and unaccompanied minors

1,258

people with disabilities,

38%

of these are children

3 in 10

households are headed by women

1,888

women at risk

8,917

shelters currently allocated

10,023

shelters built since opening

General Information

Date of opening: April 30th, 2014

Capacity: 50,000 people (exp. to 100,000)

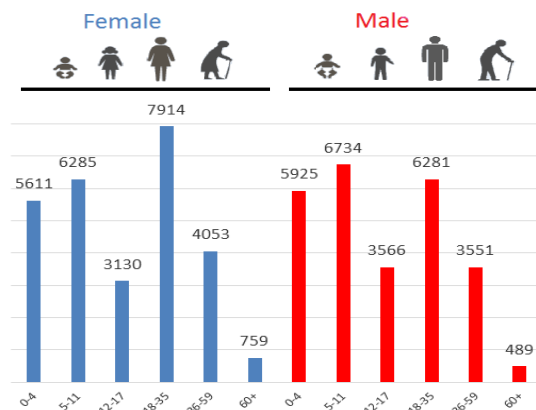
Size of camp area: 14.7 km²

Population increased since Jan'16: 86%

Place of origin in Syria	Total PoC
Aleppo	27.1%
Homs	19.0%
Dar'a	13.8%
Ar-raqqa	10.2%
Other areas	29.9%
Total	100%

2016 Funding priorities

- Health Services
- Shelter Maintenance
- Protection
- Community Mobilization



UNHCR Presence

46 national staff

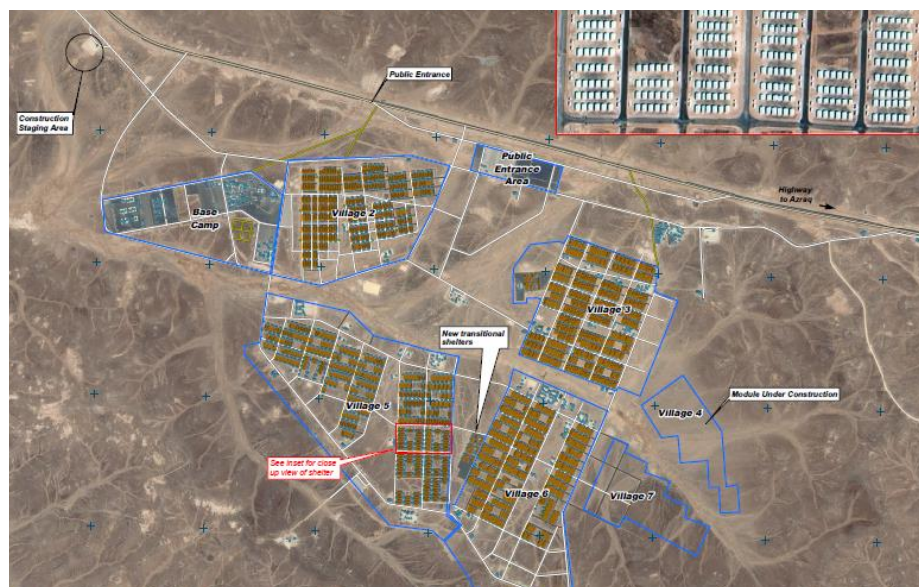
7 international staff

1 international volunteers

Geographical Snapshot:

Distance to national borders:

Syria: 90 km, Iraq: 255 km, Saudi Arabia: 75 km



Map: UNOSAT

*Figures as per 31st August 2016

TWO YEARS ON

Energy

- A comprehensive energy plan to connect electricity to every household is ongoing. Once the project is completed, each shelter will have an allowance of **1kWh/day**, enough power to operate lights, a refrigerator, television, a fan and charge phones. A solar power plant will also be installed in the camp this year to reduce the cost of electricity bills. In the meantime, UNHCR has installed **472** solar street lights and distributed an average of **4** solar lanterns per household.

Livelihoods

- Two market areas are operating in Azraq camp. The **200 shops** - 100 owned by the refugees and 100 by the host community - provide the camp with food shops, restaurants, accessories, bikes and many other items. In addition, UNHCR and its partners have set up an Incentive Based Volunteering (IBV) scheme, through which refugees play an active role in the functioning of the camp while earning some extra income. Vocational and skills trainings are being provided in the camp by partner organisations.

Food Security

- Refugees receive **20JOD (equivalent to \$28)** per person every month from WFP in the form of an electronic voucher which can be used to buy food from the supermarket in the camp using the card-less EyePay iris scanning system, connected to UNHCR's registration database. WFP also distributes **240 gr of bread daily** to all refugees in the camp. Ready to eat meals are provided to refugees upon arrival and a school feeding programme is in place for students in the formal and informal schools.

Education

- The new academic year starts with the opening of new Primary and Secondary schools to guarantee access to education for all children in the camp. Schools operate two shifts, one for girls in the morning and boys in the afternoon. Last year, over **3,000** students were enrolled at the school; registration is ongoing for the 2016/2017 academic year. Informal and non-formal education is also available as well as kindergarten facilities..

Health

- **4 primary health care centers** (PHC) operate in the camp, one comprehensive PHC in Village 6, one basic in Village 3, one temporary in Village 5 and a mobile medical unit in Village 2. PHCs are open from 9am to 4pm daily. Secondary level healthcare (medical surgical and maternity care) is available to refugees at the field **hospital running 24 hour per day**. Health and nutrition services are provided through UNHCR partners, including mental and reproductive health. An average of **26 babies per week** was delivered this month, double the births as of Feb. 2016.

Water and Sanitation

- There is one new borehole in the camp with a capacity of 50m³/h which ensures good water quality and quantity control as well as better cost efficiency. The average water supply is **1400 m³** per day. Water is distributed through the water supply network to **76** tap stands. The Waste Water Treatment Plant receiving **210 m³** per day of waste water from the camp.

Community Mobilization and Community Empowerment

- Community centers were established in 2014 in each village and facilitate vocational trainings, community gatherings and mass information activities by all agencies. Multipurpose sports-grounds in the camp offer additional sports activities for all age groups.

Targeting Persons with Specific Needs

- UNHCR and its partners provide psychosocial support to men, women, girls and boys in need. Special assistance is delivered to vulnerable groups such as single parent families and persons with disabilities. UNHCR works closely with its partners on child protection issues and to strengthen early identification, referral and response to sexual and gender-based violence (SGBV) cases.

WORKING WITH PARTNERS

UNHCR works with the following partners in Azraq Camp: The Syrian Refugee Affairs Directorate (SRAD), Ministry of Public Works and Housing, Ministry of Health, Ministry of Education, ACF, ACTED, ARDD-Legal Aid, CARE, DRC, Finn Church Aid, Handicap International, ICRC, IMC, IOM, IRC, Mercy Corps, NHF, NRC, Questscope, REACH, Relief International, Save the Children, UNFPA, UNICEF, WFP and World Vision.

Contacts:

Acacio Jafar Juliao, Head of FO Azraq, juliao@unhcr.org, Cell +962-79-613 97 69

Gamal Yacout, Officer in Charge, yacout@unhcr.org, Cell +962-79-024 25 91

Olga Sarrado Mur, Associate External Relations and Mass Information Officer, sarrado@unhcr.org, Cell +962-79-761 77 99