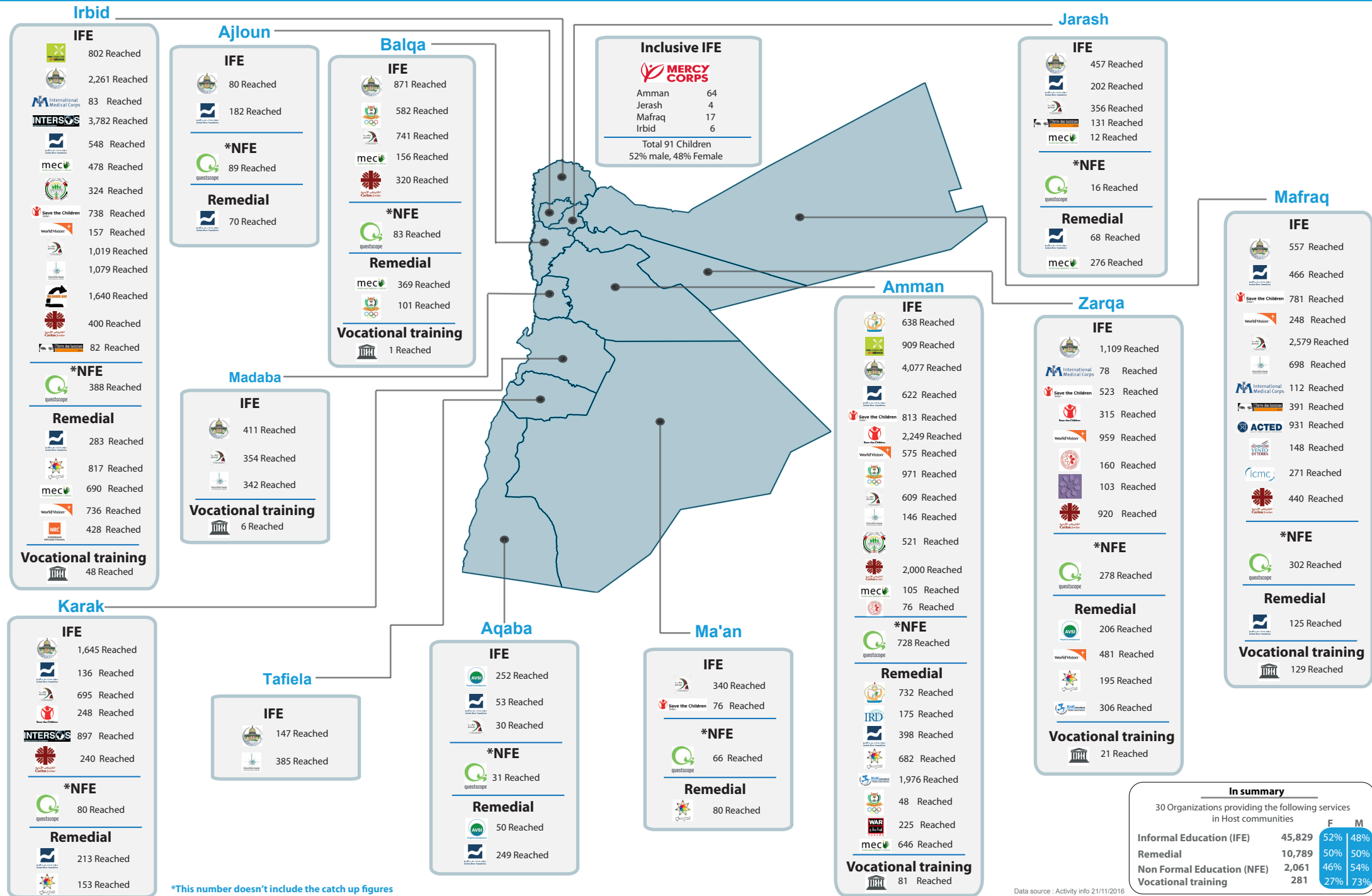




Education 4Ws in Host Communities

January - October 2016



*This number doesn't include the catch up figures

In summary			
30 Organizations providing the following services in Host communities			
		F	M
Informal Education (IFE)	45,829	52%	48%
Remedial	10,789	50%	50%
Non Formal Education (NFE)	2,061	46%	54%
Vocational training	281	27%	73%

Data source : Activity info 21/11/2016