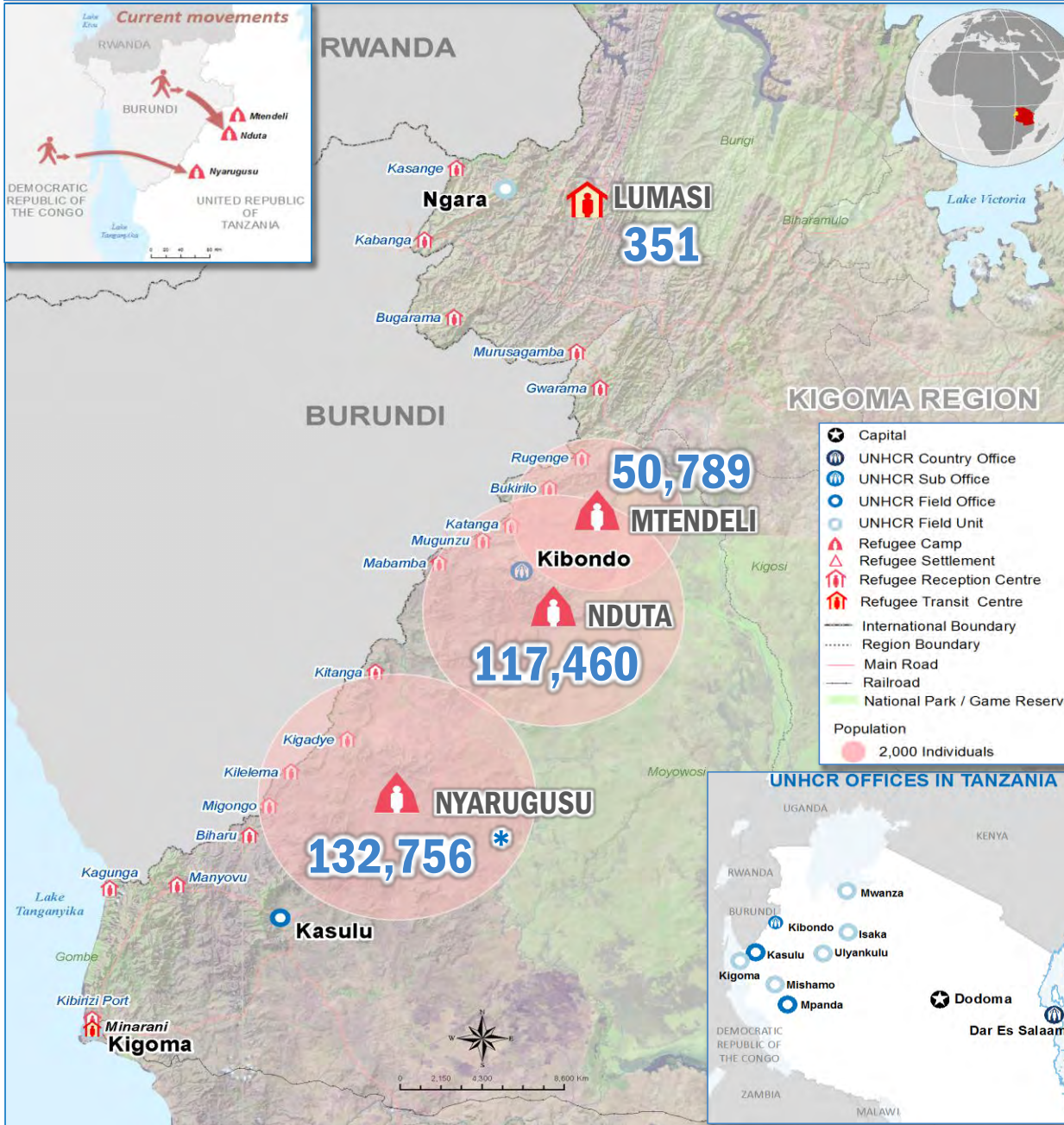
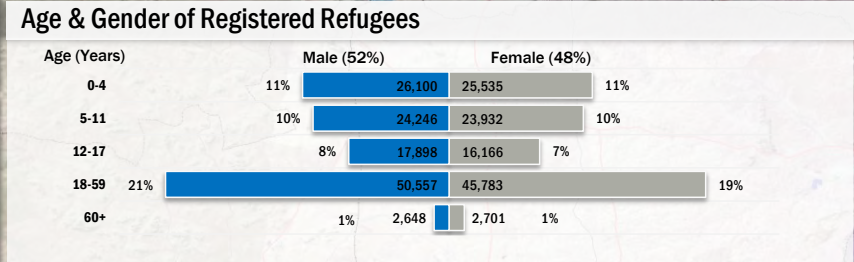
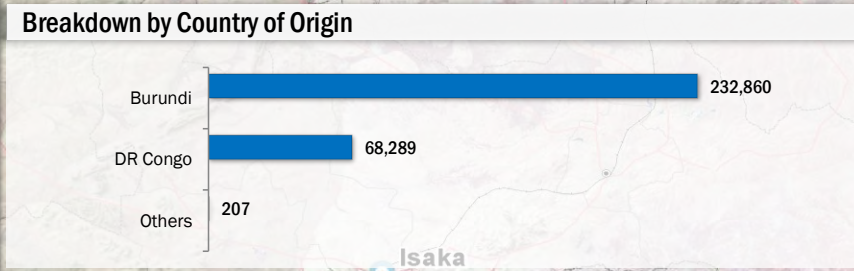
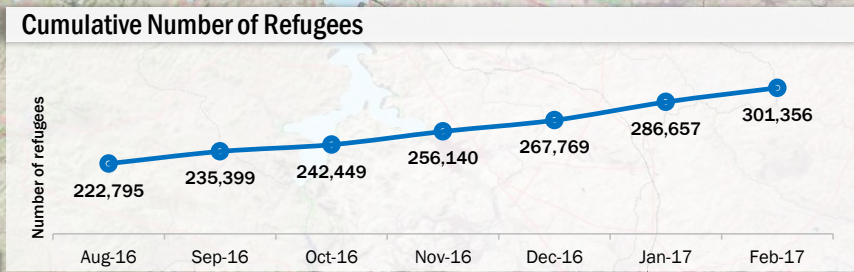


Tanzania - REFUGEE POPULATION UPDATE

as of 28 February 2017



Total Number of Refugees	301,356
Total Number of Biometrically Registered Refugees	235,566
Total Number of Registered Households	87,422
Refugees Awaiting Biometric Registration	3,817



Background information

The current Burundi refugee situation in Tanzania began late April 2015. The months that followed saw a high number of persons of concern arriving in Tanzania. Prior to allocating new camp site by the Government of Tanzania, the population was temporarily hosted in Nyarugusu camp, which was already host to 65,000 other persons of concern, mainly DR Congolese. The camp quickly ran out of capacity to host the new population, prompting the opening of a new camp, Nduta, in Kibondo district on 05-Oct-2015. Nduta's capacity was put at 60,000. Another camp, Mtendeli in Kakonko district, was also opened and began officially receiving refugees from Burundi on 14-Jan-2016. By September 2016, Mtendeli reached its full capacity of 50,000. The next month Nduta camp was re-opened to receive newly arriving refugees from Burundi; while all other nationals entering Tanzania to seek asylum are hosted in Nyarugusu camp.