

# UNHCR Rwanda - Monthly Population Statistics

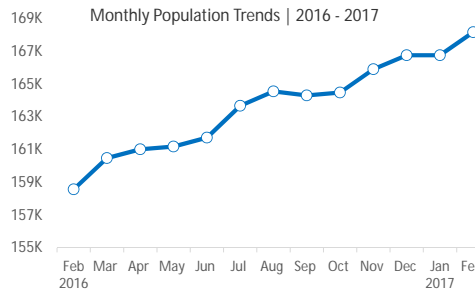
Statistics as of 28 February 2017



## KEY POPULATION FIGURES

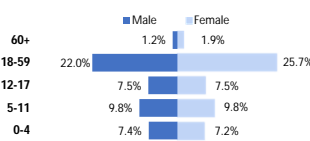
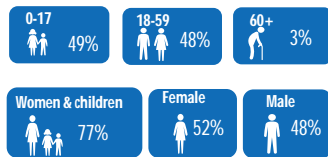


<b>168,184</b>	<b>Total Population</b>
<b>158,603</b>	<b>Individually Registered</b>
<b>8,802</b>	<b>Congolese asylum-seekers (Inactive)</b>
<b>779</b>	<b>Group Registered (In Reception centres)</b>
<b>791</b>	<b>New Arrivals in February (Burundians)</b>



Location	Group Registered	Individually Registered	Total Households
Kigeme	-	19,587	3,826
Gihembe	-	12,653	2,906
Kiziba	-	17,169	3,521
Nyabiheke	-	14,296	2,788
Mugombwa	-	8,842	2,011
Kigali	-	29,800	13,773
Bugesera RC	314	-	137
Nyanza RC	4	-	2
Nyagatare TC	-	-	-
Gatore RC	461	-	374
Huye	-	3,260	1,228
Mahama	-	52,996	18,807
<b>Total</b>	<b>779</b>	<b>158,603</b>	<b>49,373</b>

## AGE and GENDER COMPOSITION

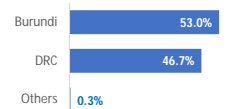


Age	0-4	5-11	12-17	18-59	60+	Total	Percentage
Female	11,460	15,537	11,919	40,740	3,025	<b>82,681</b>	52.1%
Male	11,719	15,552	11,894	34,826	1,931	<b>75,922</b>	47.9%
<b>Total</b>	<b>23,179</b>	<b>31,089</b>	<b>23,813</b>	<b>75,566</b>	<b>4,956</b>	<b>158,603</b>	
	14.6%	19.6%	15.0%	47.6%	3.1%		Average family size: 3.2

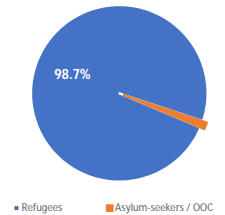
## COUNTRIES OF ORIGIN

Country of Origin	0 - 4 years		5 - 11 years		12 - 17 years		18 - 59 years		60+ years		Total
	F	M	F	M	F	M	F	M	F	M	
Afghanistan											1
Angola	1						4	1			6
Burundi	6,081	6,317	7,736	7,873	5,336	5,645	21,212	22,021	1,154	655	<b>84,030</b>
Belgium							1				1
Central African Rep.		1						1			2
Chad				1			2	3		1	7
DR Congo	5,364	5,384	7,782	7,657	6,572	6,241	19,184	12,768	1,864	1,270	<b>74,086</b>
Eritrea			1	1			1	10			13
Ethiopia								4			4
Guinea								1			1
Haiti		1									1
Kenya							1				1
Rwanda	13	14	16	17	11	5	333	12	7	3	<b>431</b>
Somalia		1	1	1		3		1		1	8
South Sudan								2			2
Tanzania	1		1	1							3
Uganda		1		1			2	1		1	6
<b>Total</b>	<b>11,460</b>	<b>11,719</b>	<b>15,537</b>	<b>15,552</b>	<b>11,919</b>	<b>11,894</b>	<b>40,740</b>	<b>34,826</b>	<b>3,025</b>	<b>1,931</b>	<b>158,603</b>

### Main Countries of Origin



### Refugee Status



Specific Needs	Number	%
Child at risk	597	3.4%
Disability	2,675	15.0%
Family unity	490	2.8%
Older person at risk	1,771	9.9%
Serious medical condition	3,534	19.9%
SGBV	619	3.5%
Single parent	2,244	12.6%
Legal & physical protection needs	504	2.8%
Torture	565	3.2%
Unaccompanied or separated child	2,880	16.2%
Woman at risk	1,921	10.8%
<b>Total</b>	<b>17,800</b>	

An individual may have more than one specific need

Areas of origin	Number	%
North Kivu	64,099	86.5%
South Kivu	7,544	10.2%
Katanga	1,668	2.3%
Maniema	149	0.2%
Orientale	100	0.1%
Kinshasa	79	0.1%
Kasai Oriental	20	0.0%
Bandundu	18	0.0%
Equateur	11	0.0%
Other	398	0.5%
<b>Total</b>	<b>74,086</b>	

Refugees from DR Congo

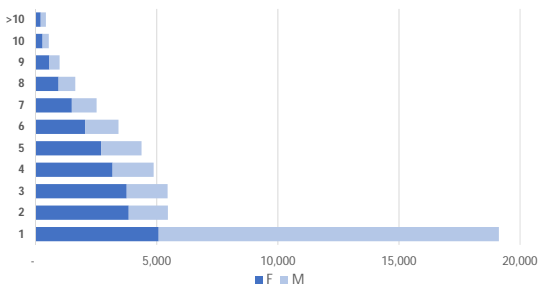
\* Includes asylum-seekers

Areas of origin	Number	%
Kirundo	36,098	43.0%
Bujumbura Mairie	30,314	36.1%
Muyinga	7,855	9.3%
Ngozi	3,261	3.9%
Karuzi	1,195	1.4%
Kayanza	932	1.1%
Cibitoke	926	1.1%
Gitega	597	0.7%
Ruyigi	530	0.6%
Bubanza	491	0.6%
Other	1,831	2.2%
<b>Total</b>	<b>84,030</b>	

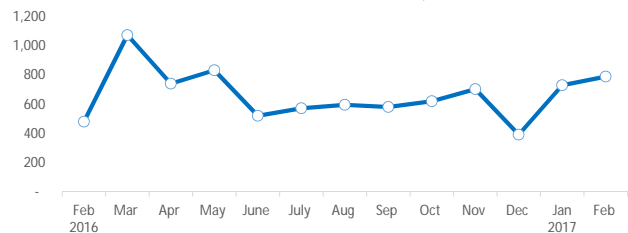
Refugees from Burundi

\* Includes asylum-seekers

### Family Size Breakdown



### Monthly New Arrivals Trend - Burundians | 2016 - 2017



COO Rwanda represents spouses of registered refugees

Congolese asylum seekers and the group registered individuals are not included in the demographic and other breakdowns

For More Information: <http://data.unhcr.org/drc/country.php?id=182> and <http://data2.unhcr.org/en/situations/burundi/location/2006>