



UN-HABITAT Urban Profiles & Strategies

National urbanisation

- In Lebanon, 87% of population lives in urban areas, of which >50% live in the 4 key cities
- Prior to the Syrian refugee crisis this had already led to the development of excluded and deprived neighbourhoods with concentration of poverty, social stability concerns, complications surrounding governance and service provision between formal and informal governance and service providers.
- Post-2011 refugee influx - no-camps policy - demographic shock felt particularly on poorest pockets of major cities
- Urban concentration does however offer opportunities for access to jobs in formal and informal sectors for city residents, and for integrated planning / investment in productive sectors.

Urban challenges in Lebanon

- Lack of statistics at all levels
- Lack of planning institutions and spatial planning frameworks
- Lack of urban policies at the regional and national levels
- Local planning frameworks not aligned between municipalities
- Highly centralized administration and political systems;
- Weak local authorities in terms of technical & financial resources;
- Overlapping responsibilities and mandates amongst different sector ministries;
- Lack of coordination between sector ministries;
- High refugee / displaced population baseline, even before Syrian crisis

Impact of the crisis on urban areas in Lebanon

- Heightened demand on already strained basic urban and social services;
- Poor housing & shelter conditions
- Concentration of high youth unemployment & lack of opportunities
- Added pressure on already deprived neighbourhoods > increased tension between / within communities due to competition over jobs and services
- Increased vulnerability among city populations, mainly in poor neighbourhoods
- Limited capacity of local authorities and institutions to cope with increased demand for services and to maintain social stability between communities
- The protracted crisis may lead more refugees to the cities where there are more jobs in the informal sectors.

Challenges to urban crisis response

- Invisibility of urban refugees
- Lack of accurate population data/cohorts and spatial understanding of where interventions have been concentrated;
- Insufficient humanitarian funding towards urban areas and decrease of funding overall calling for improved targeting;
- Undefined roles and responsibilities of concerned municipalities; Insufficient coordination between support agencies and municipalities;
- Lack of coordination between municipalities and local/regional/central government entities;

Towards innovative urban approaches

UN-Habitat offers an area-based (spatial) approach that

- improves **understanding of the impact** of the crisis on urban settings
- informs/promotes short, medium & long-term **strategic interventions**

...in deprived areas of the key cities [areas also covered by the 251 common target localities]



UN-HABITAT URBAN RESPONSE TOOLS

UN  HABITAT
FOR A BETTER URBAN FUTURE

UN-Habitat Urban Approach

Area-based

- Point of entry is geographical, not sectoral or cohort based
 - 2 scales: city & neighbourhood
- Multi-Sectoral & participative process

Approach comprises

1. Analysis [spatial across sectors]
2. Strategies [integrated multi-sector & multi-stakeholder]
3. Project Implementation & Capacity Building [service providers & governance]



UN-HABITAT URBAN ANALYSIS & STRATEGIES

UN HABITAT
FOR A BETTER URBAN FUTURE

City & Neighbourhood Profiles

Definition

- Holistic & multi-sectoral description & analysis of defined areas that assesses urban capacity to respond to stresses of refugee crisis

Purpose

- To highlight unmet urban needs
- To add spatiality to understanding of vulnerabilities
- To foster responses that are integrated [cross-sectoral, cross-cohort] in defined places
- To understand data collection/management in urban settings
- To generate nationally comparable data
- To underpin city & neighbourhood strategies

Audiences

- NGOs; Donors; UN Agencies; Ministries & other public administration; Municipalities / Unions; Private Sector; Communities

City Profiles

- Identify new city boundaries based on contemporary built up areas;
 - Focused on: population, governance, services & economy;
 - Capitalise on available data to analyse urban impact of crisis;
 - Evidence-based promotion of urban national policies
-
- Produced in coordination with sectoral focal points, UNWRA, municipalities & other stakeholders

City Profiles Coverage

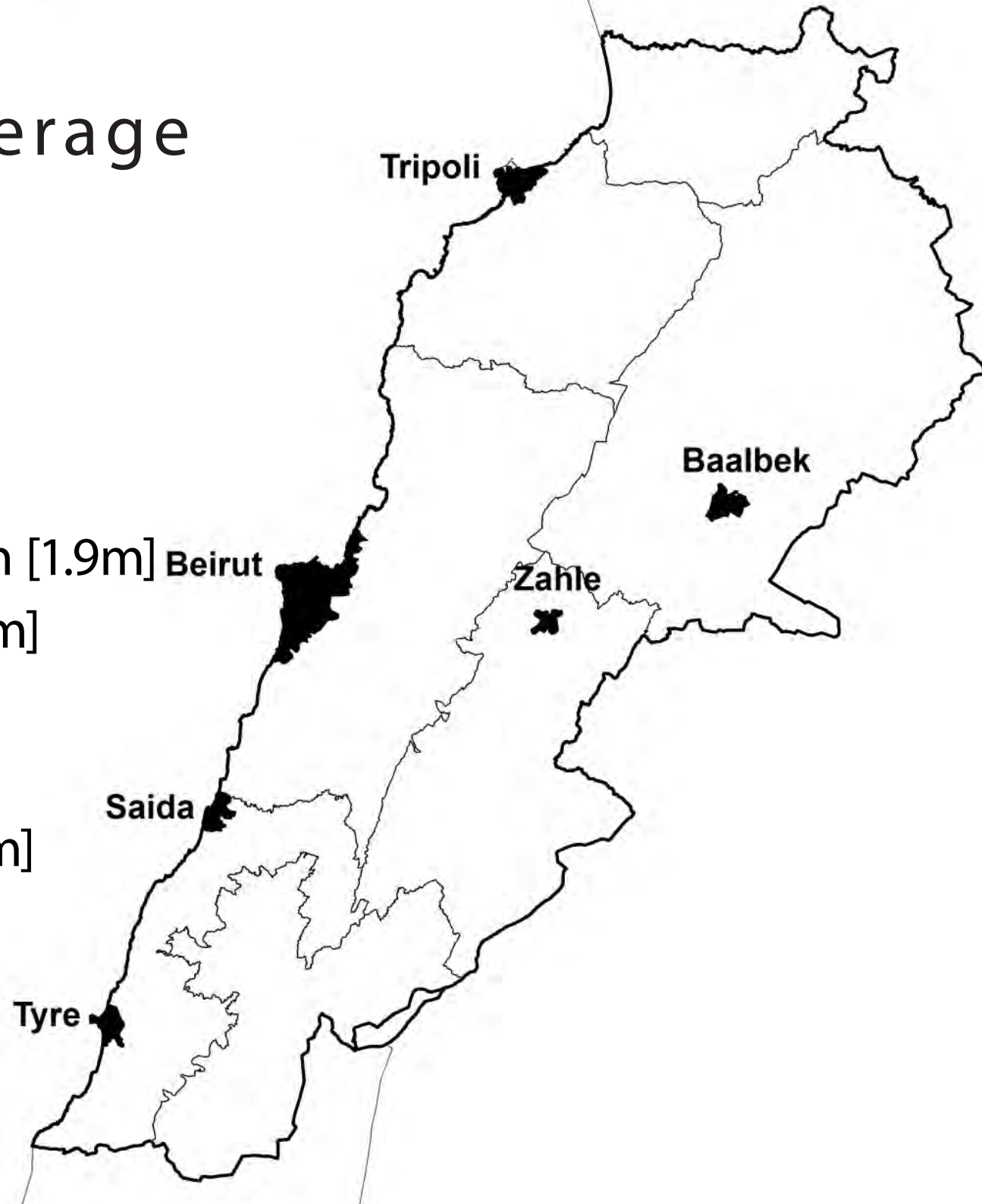
Tripoli, Tyre, Saida,
Beirut, Baalbeck, Zahle

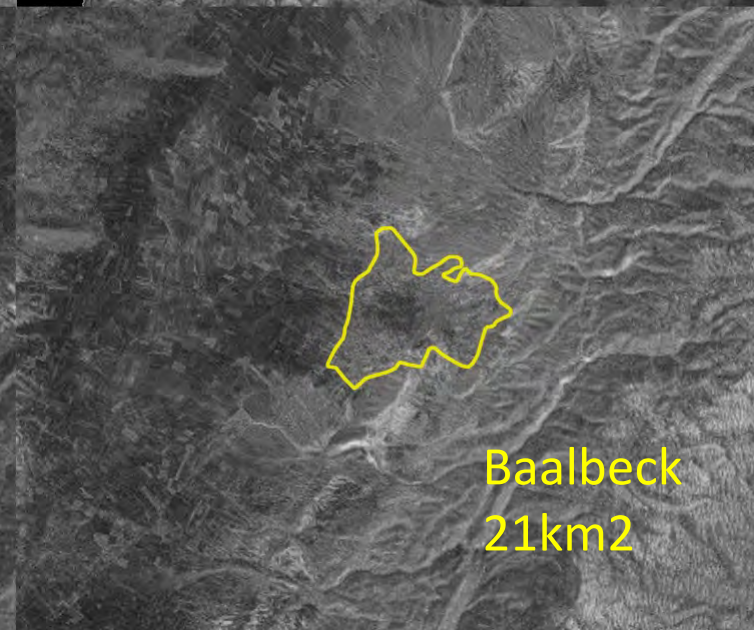
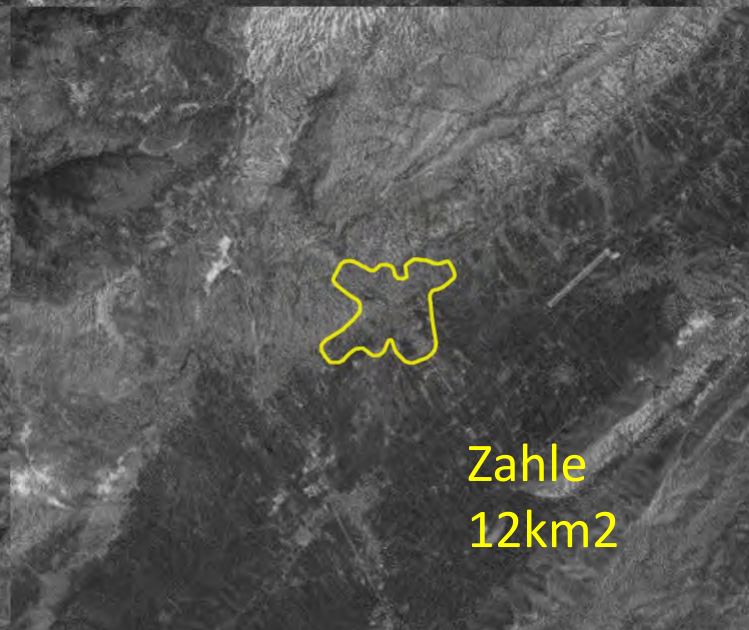
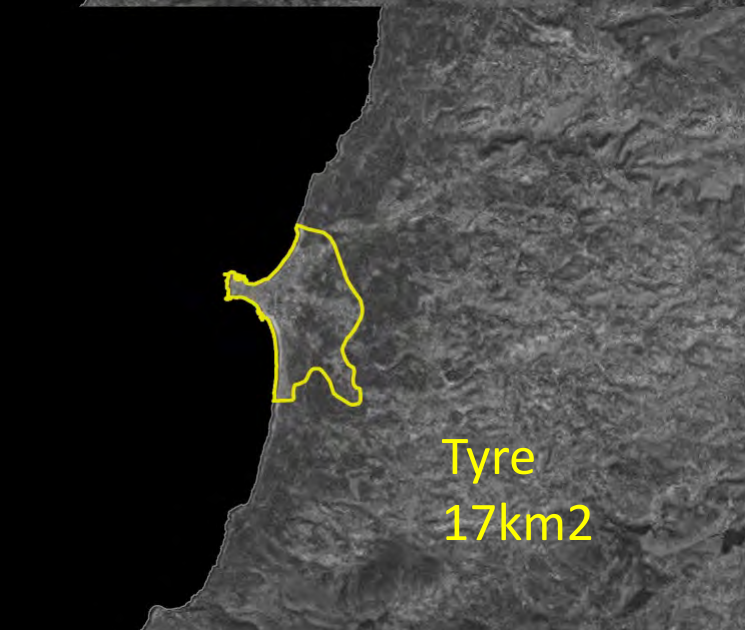
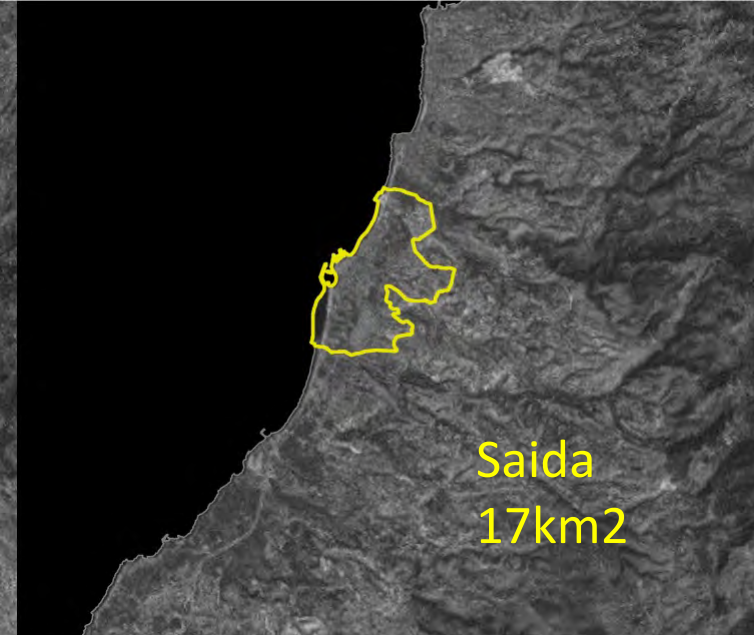
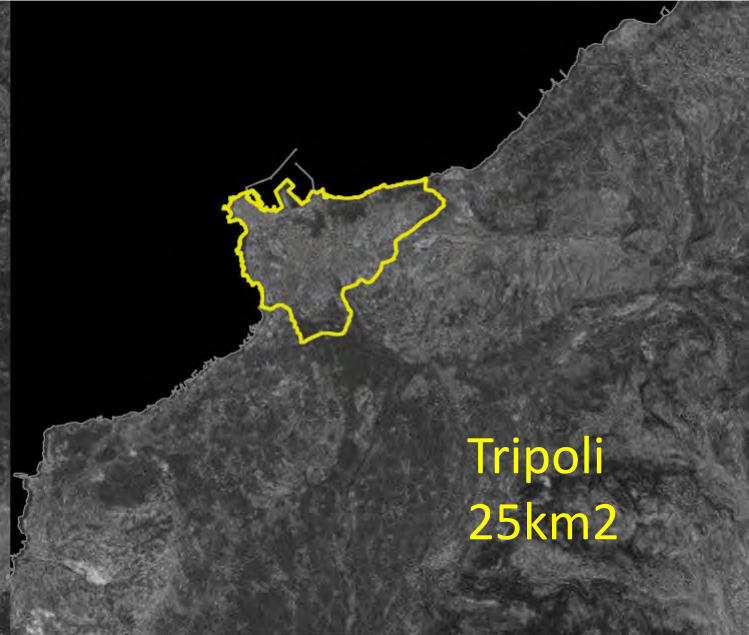
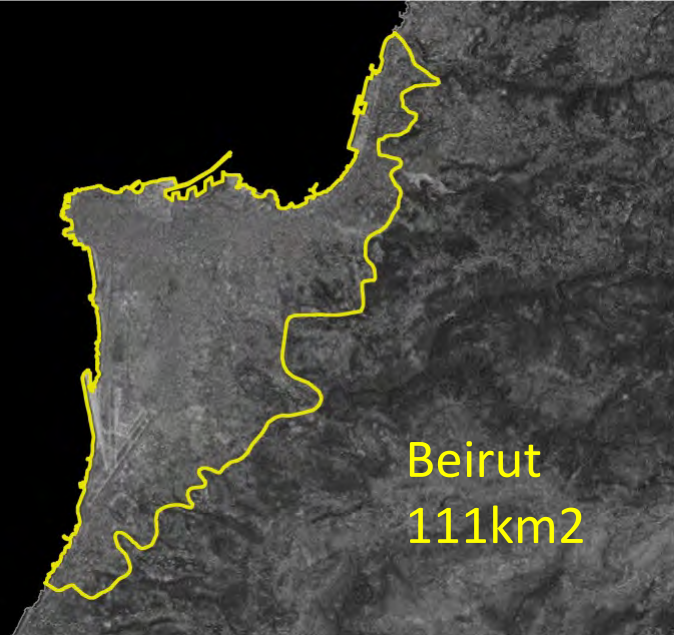
47% of Lebanese population [1.9m] Beirut

42% Lebanese <\$4/day [0.5m]

70% of Palestinian refugees
(PRL & PRS) [0.2m]

30% of Syrian refugees [0.4m]





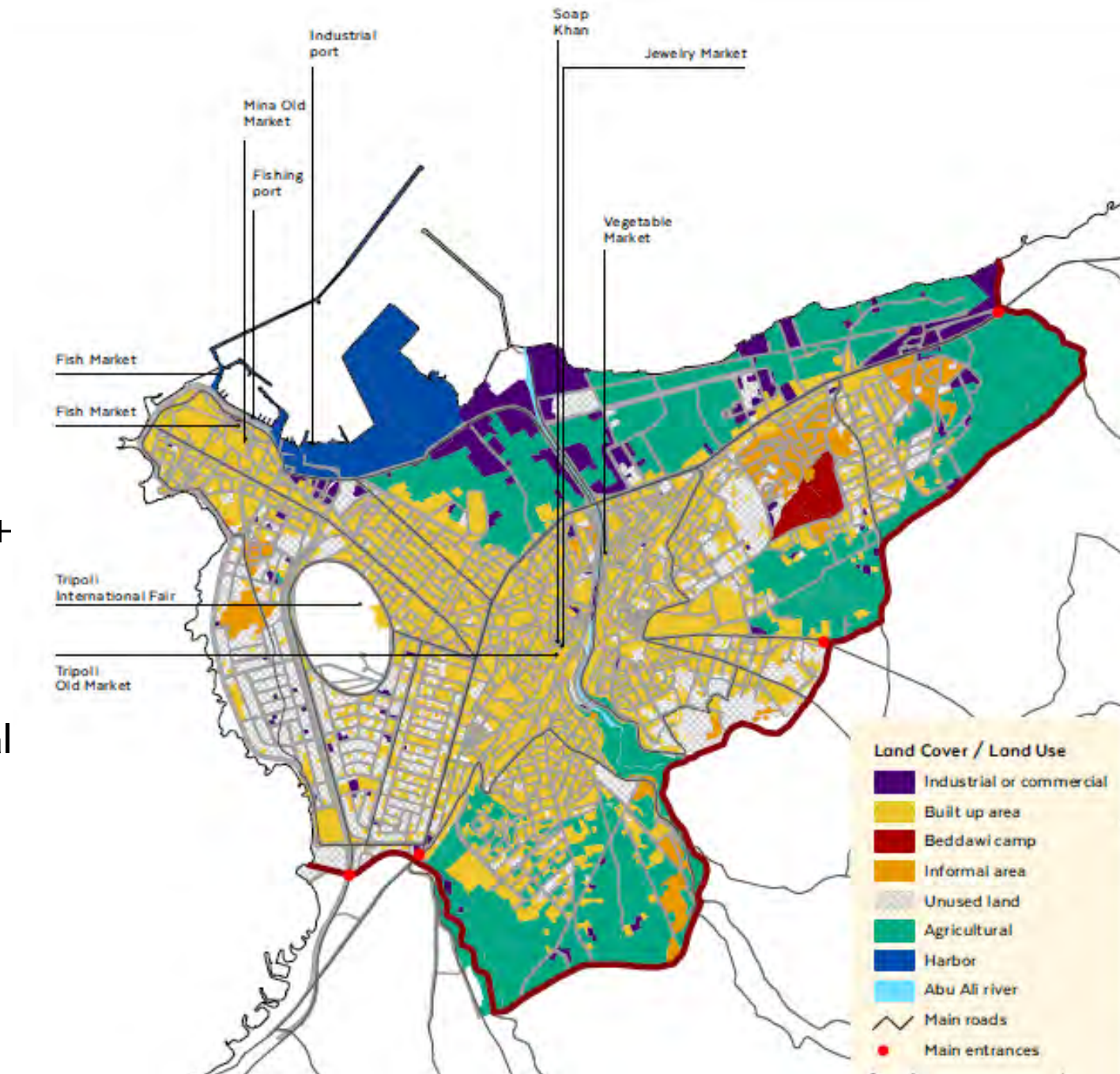
Administrative boundaries; Neighbourhoods; Area km²; Remote land cover analysis;
Features of functionality (commercial hubs, harbours, heritage sites, Palestinian camps)

Tripoli

32% Urban/built up
27% Agricultural
13% Roads
12% Empty land
7% Industrial / Commercial
4% Informal area
5% Other

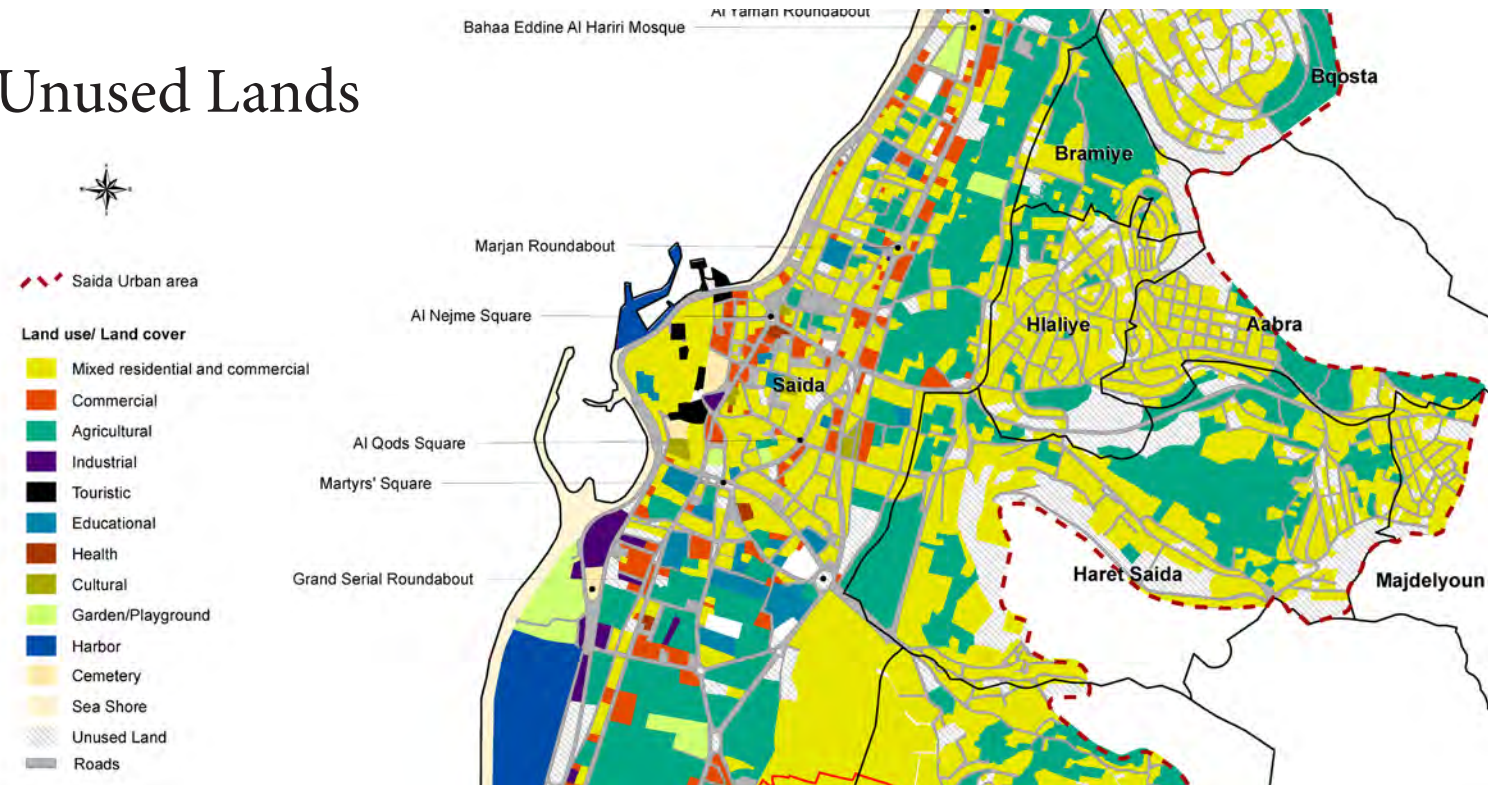
- Low densities at margins suggest weak planning/development controls
- Physical devt capacity for infill + concentrated east of fair
- Parcelled/zoned/priced for high-end residential / non-employment generating uses
- Four concentrations of informal building typologies

Opportunities for social re-distribution through planning of affordable housing & pro-poor spatial prescriptions.



Saida

- 48% Urban/Built-up area
- 25% Agricultural
- 0.8% Gardens
- 2% Sea Shore
- 11% Roads
- 13.2% Empty land / Unused Lands



Population

City level

Data sources

- Population figures adopted by humanitarian response in Lebanon (1997 figures)
- UN-Habitat extrapolation of above (to 2014)
- Alternative population estimates adopted by municipalities/unions
- Official figures for registered PRL, PRS, SR
- UN-Habitat neighbourhood profiling population figures

Analysis

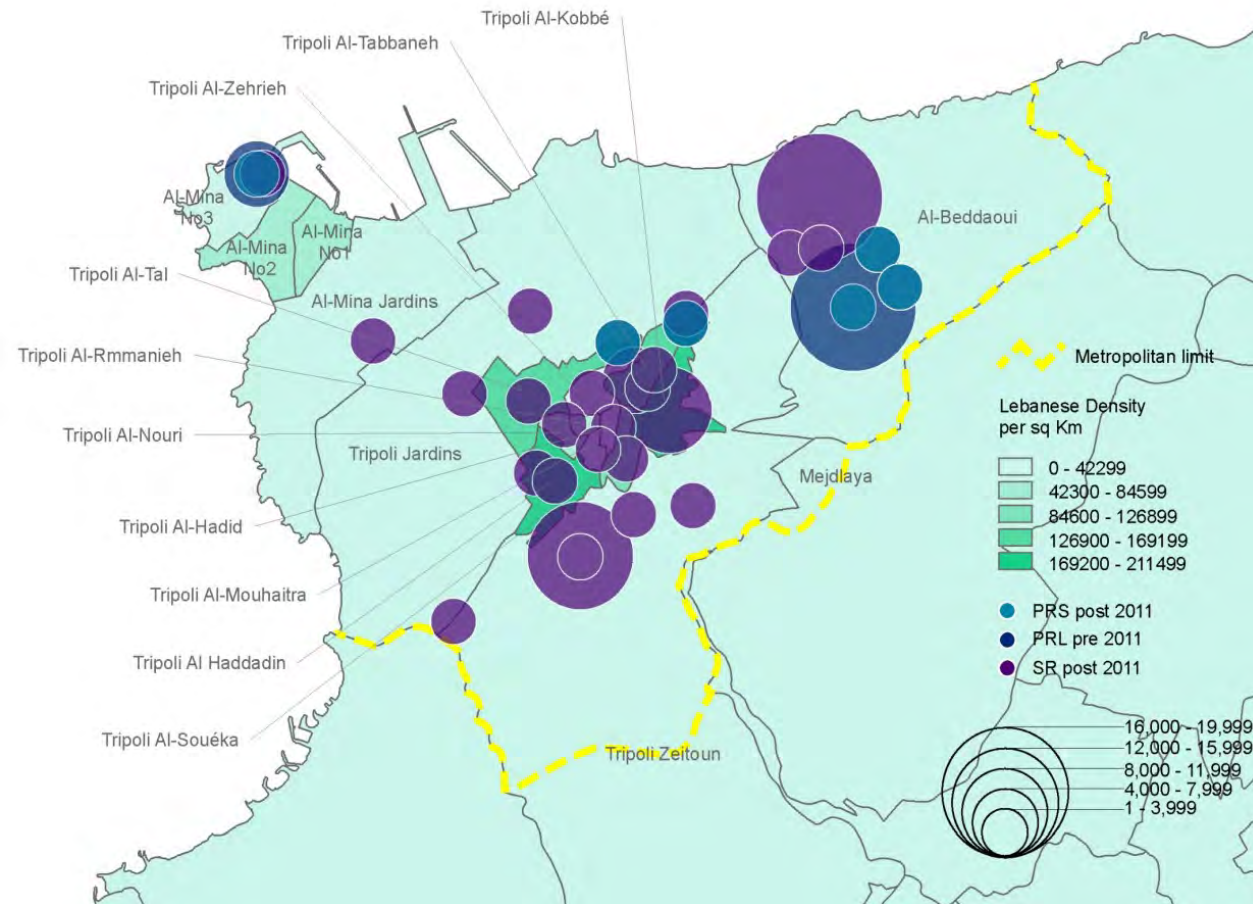
- Cadaster & locality-level 'heat map' of spatial demographic pressure by cohorts

Neighbourhood level

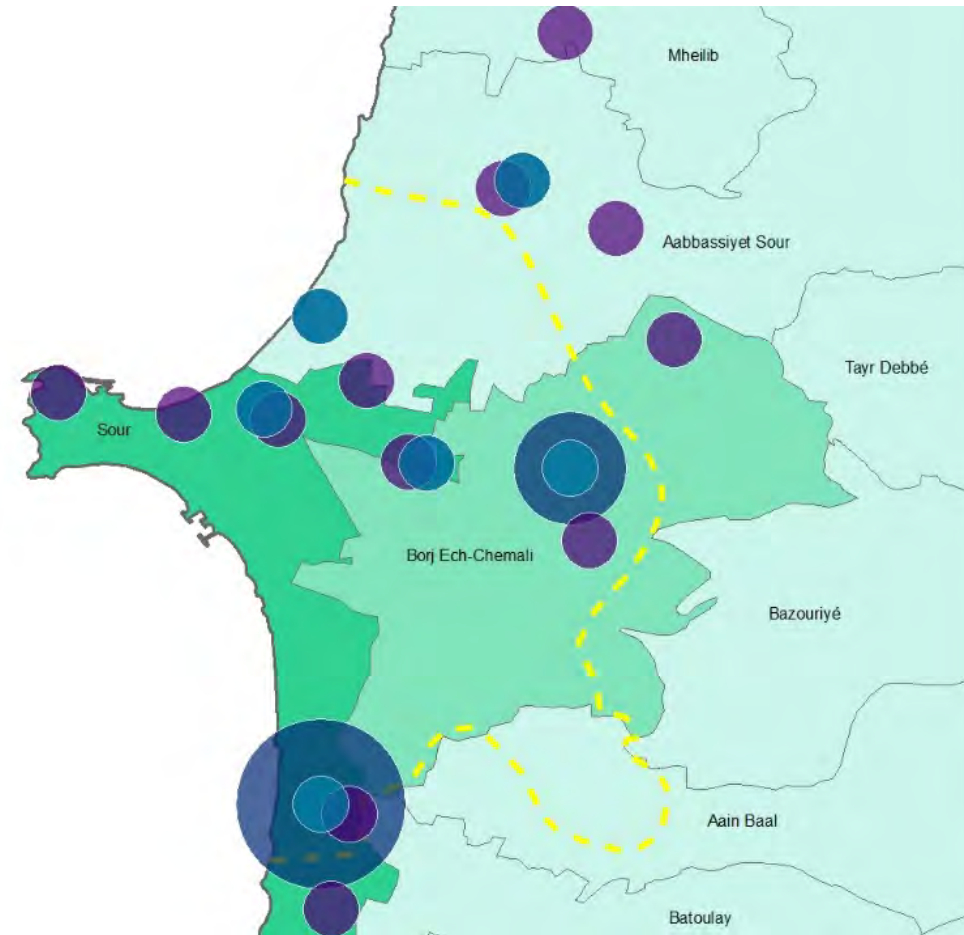
- Residential survey per building and residential unit.
- Currently disaggregated by cohort; age and gender to be added in upcoming neighbourhoods

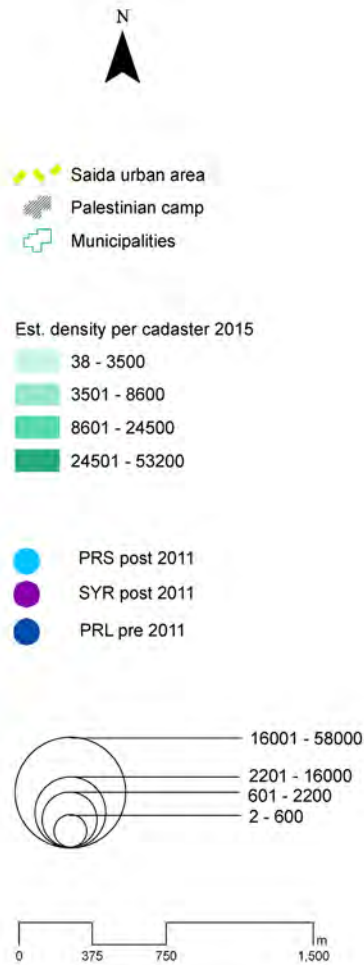
Refugee urban locations

Tripoli

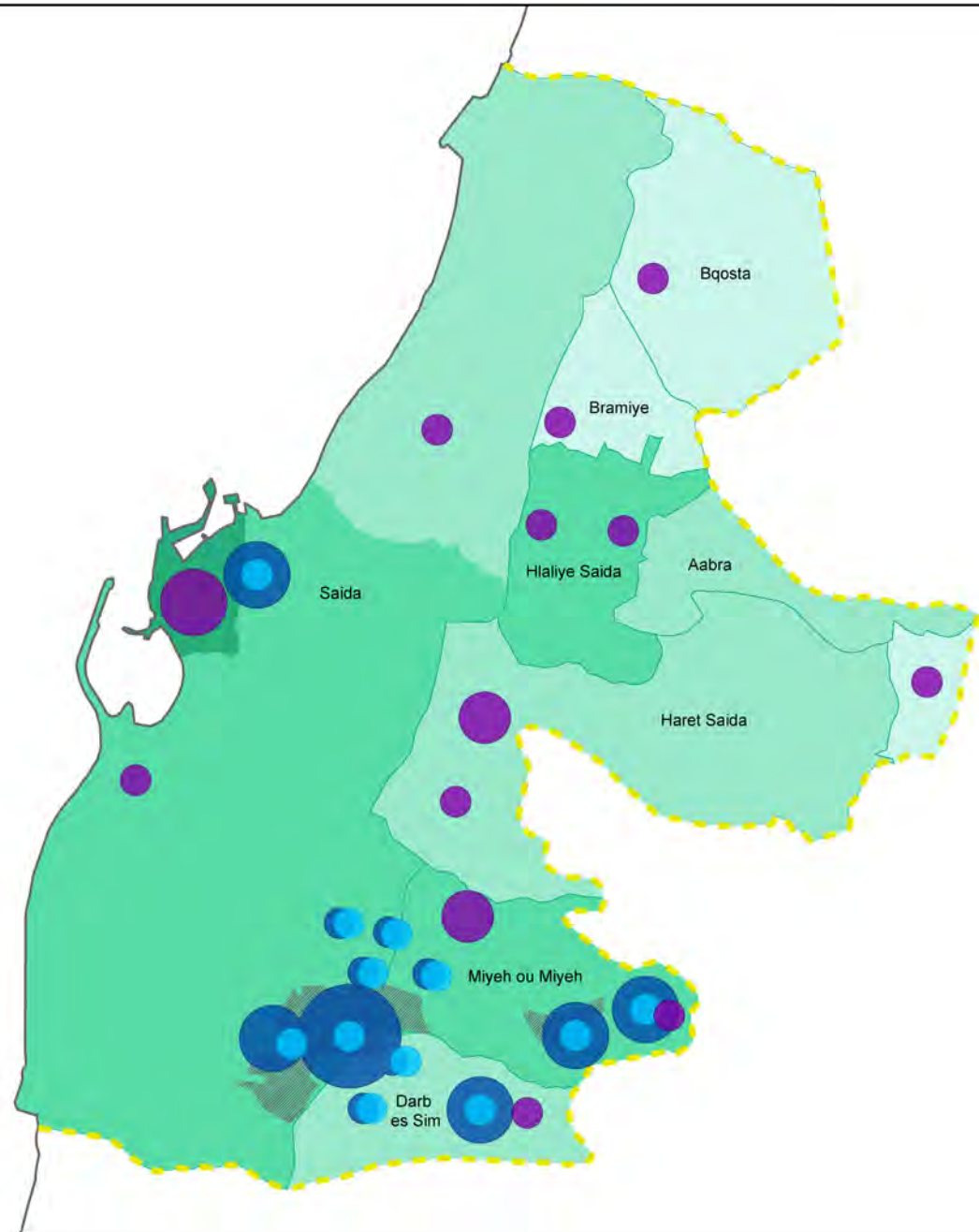


Tyre

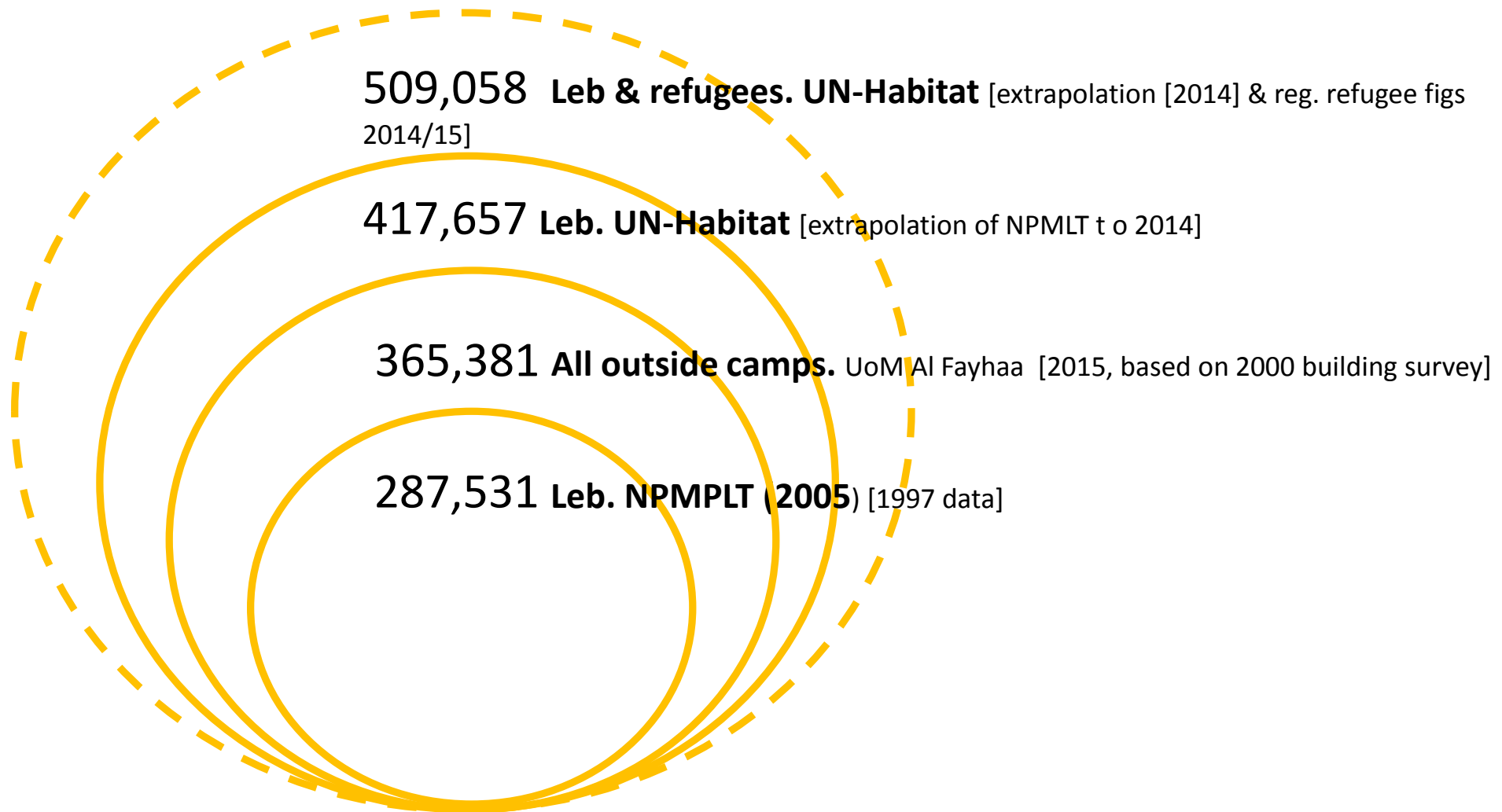




The Palestinian refugee population outside camps is represented per location to show their distribution across Saida, preserving total count but estimating locational ones.



Tripoli Population Estimates




Nabaa Pop Estimates

14,760
Total Residents in Nabaa

33%  3.5 people / residential unit
Lebanese

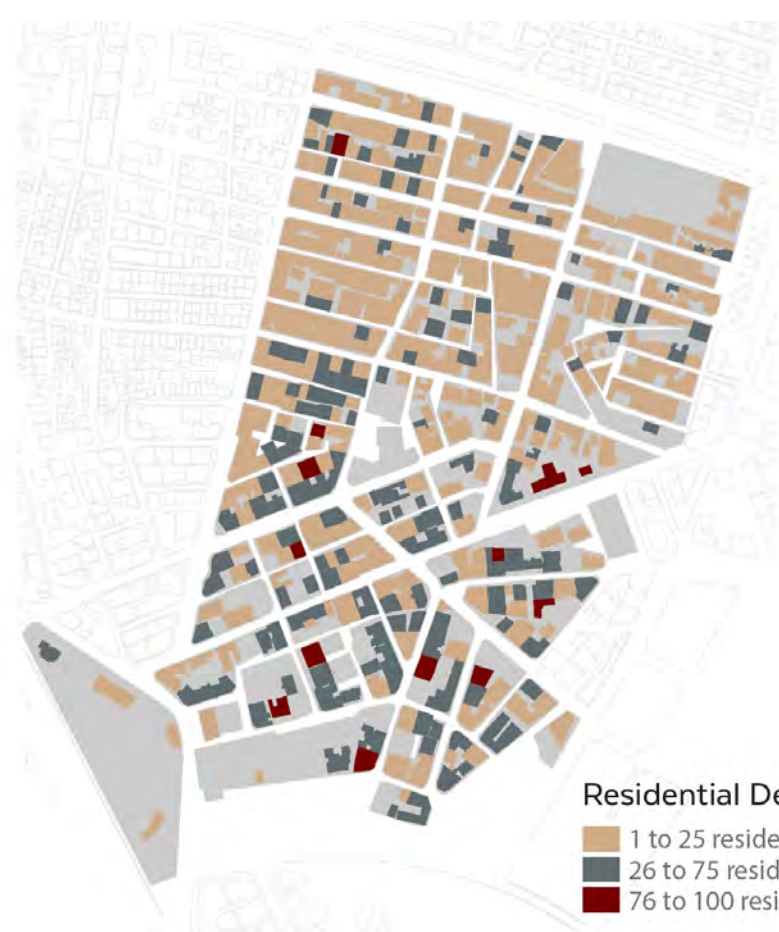
63%  5.3 people / residential unit
Syrian Refugees

0.2%  PRL

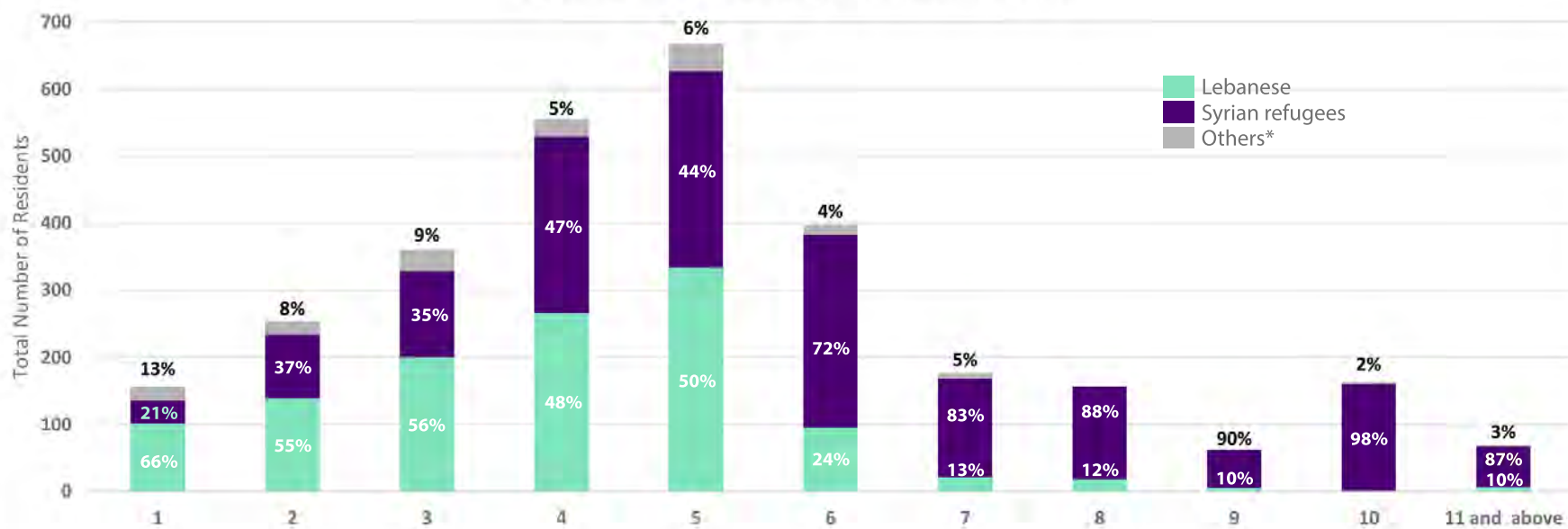
3.8%  3.9 people / residential unit
Other*

Source: UN-Habitat Lebanon, November 2016

Others* (African, Filipino, Sri Lankan,
Bangladeshi, Indian...)



Population Distribution per Residential Unit



Economy, Housing & Shelter, Services

Economy; Livelihoods, Basic Assistance

Housing & Shelter

Basic Urban Services

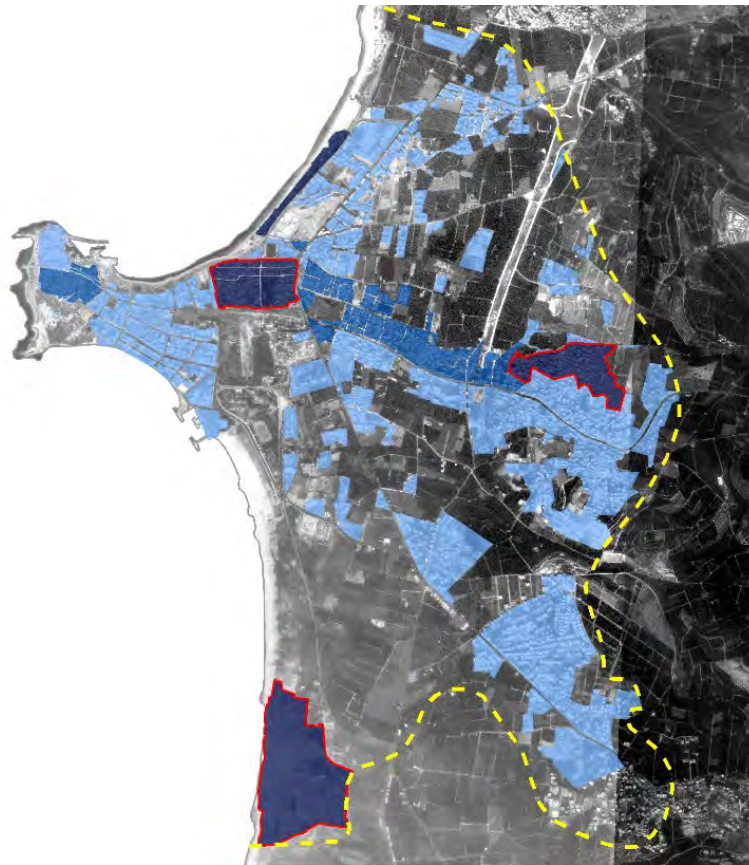
- Potable water, Wastewater, Stormwater, Solid Waste, Power, Transport

Social Services

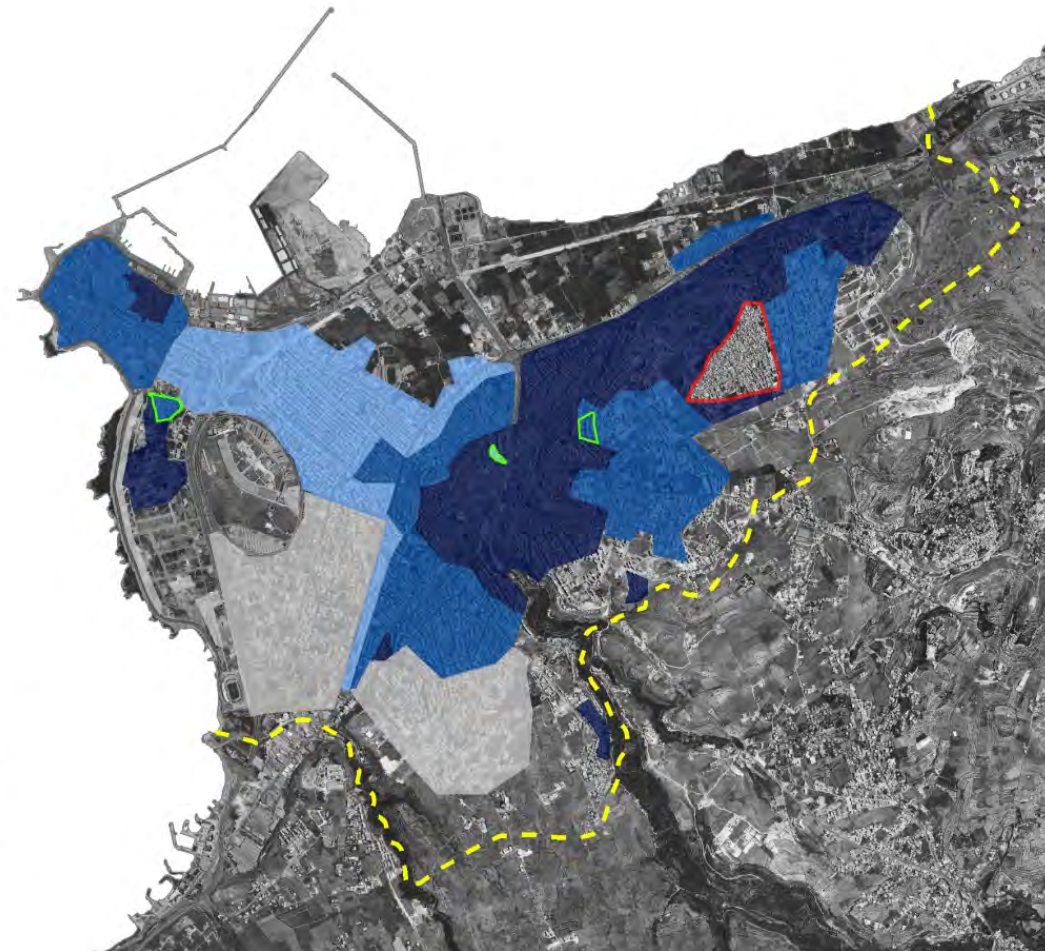
- Health
- Education
- Social Stability
- Food security
- Protection

Housing quality

Tyre

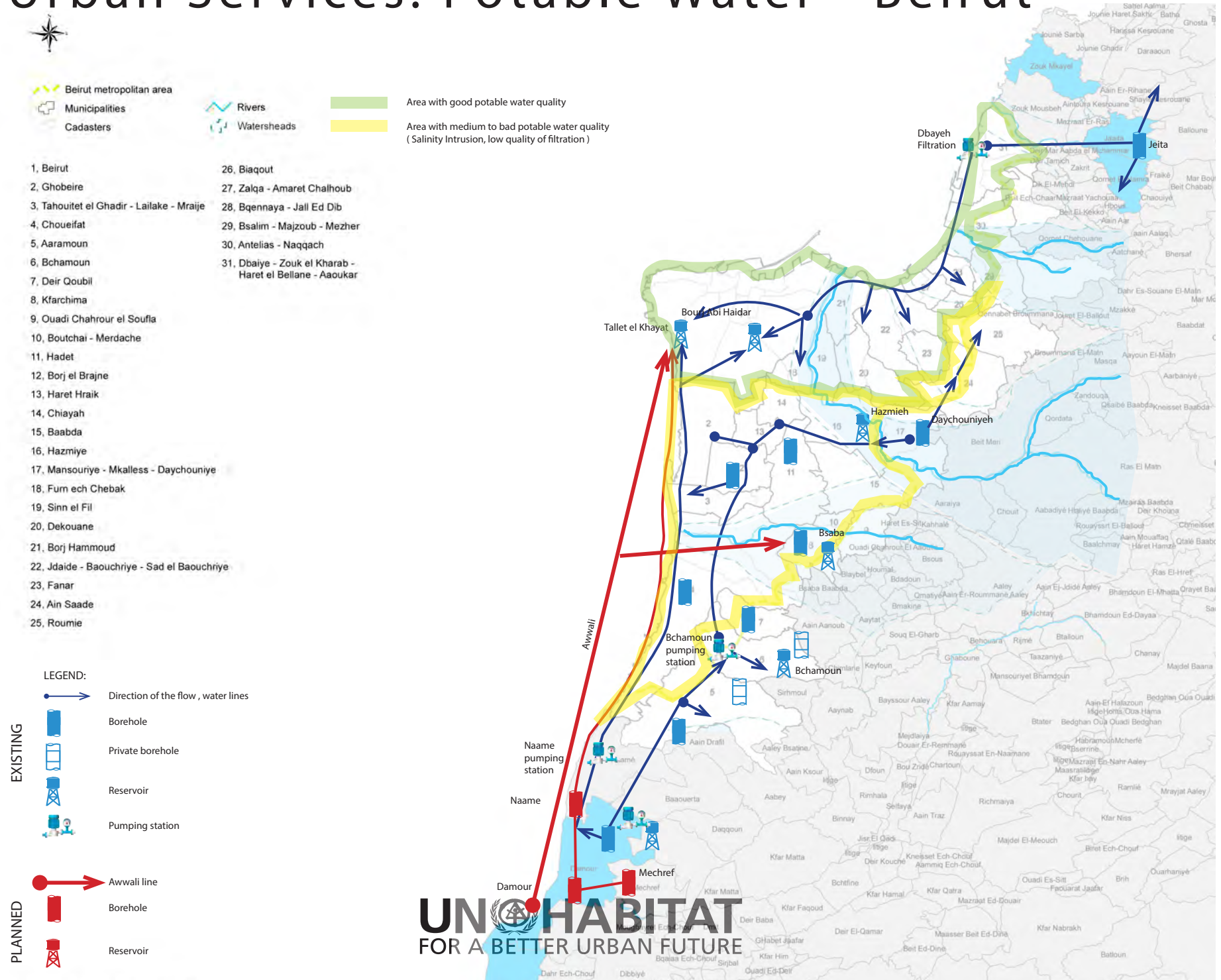


Tripoli

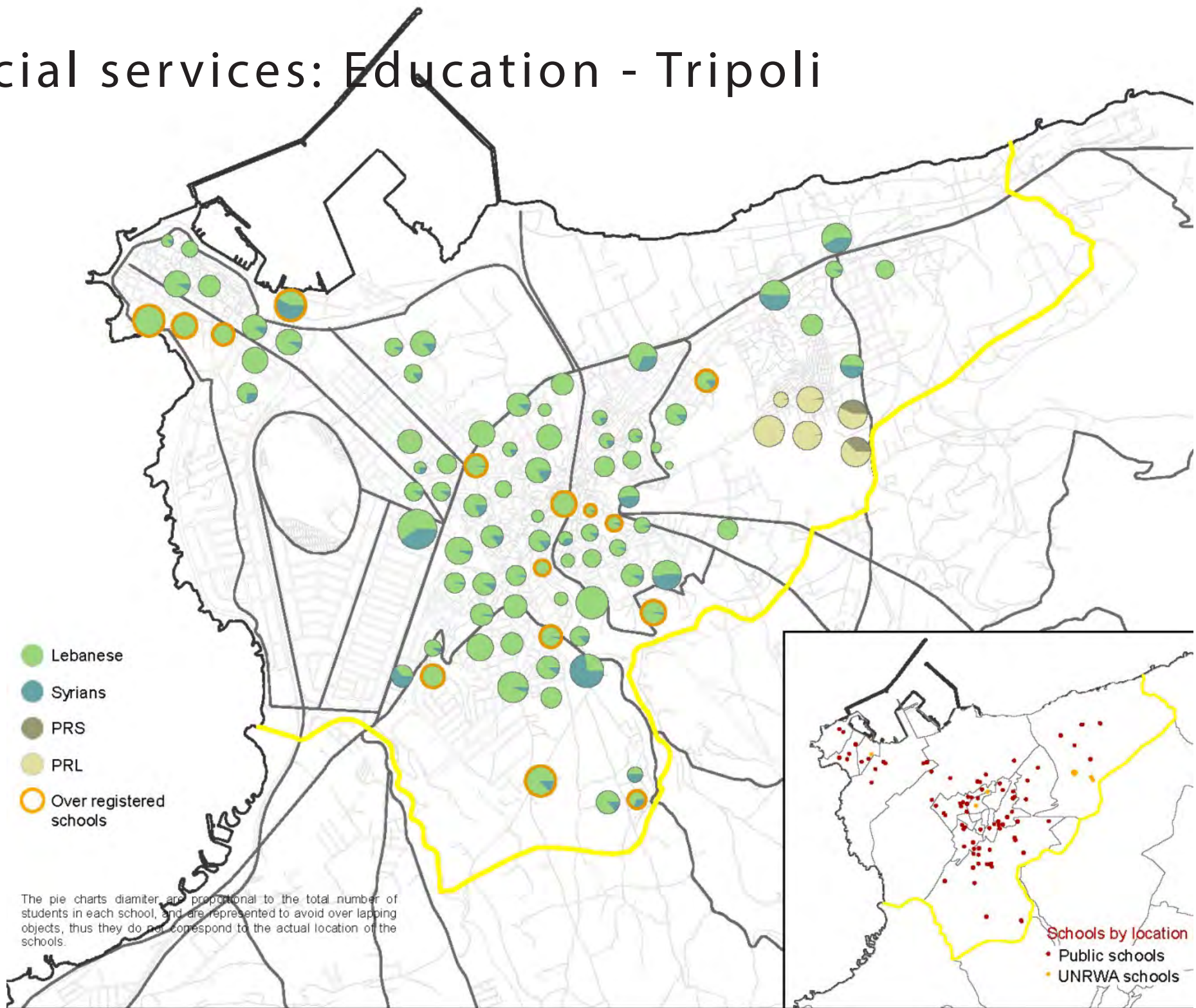


- Very poor quality
- Poor quality
- Fair to good quality
- Palestinian Camp

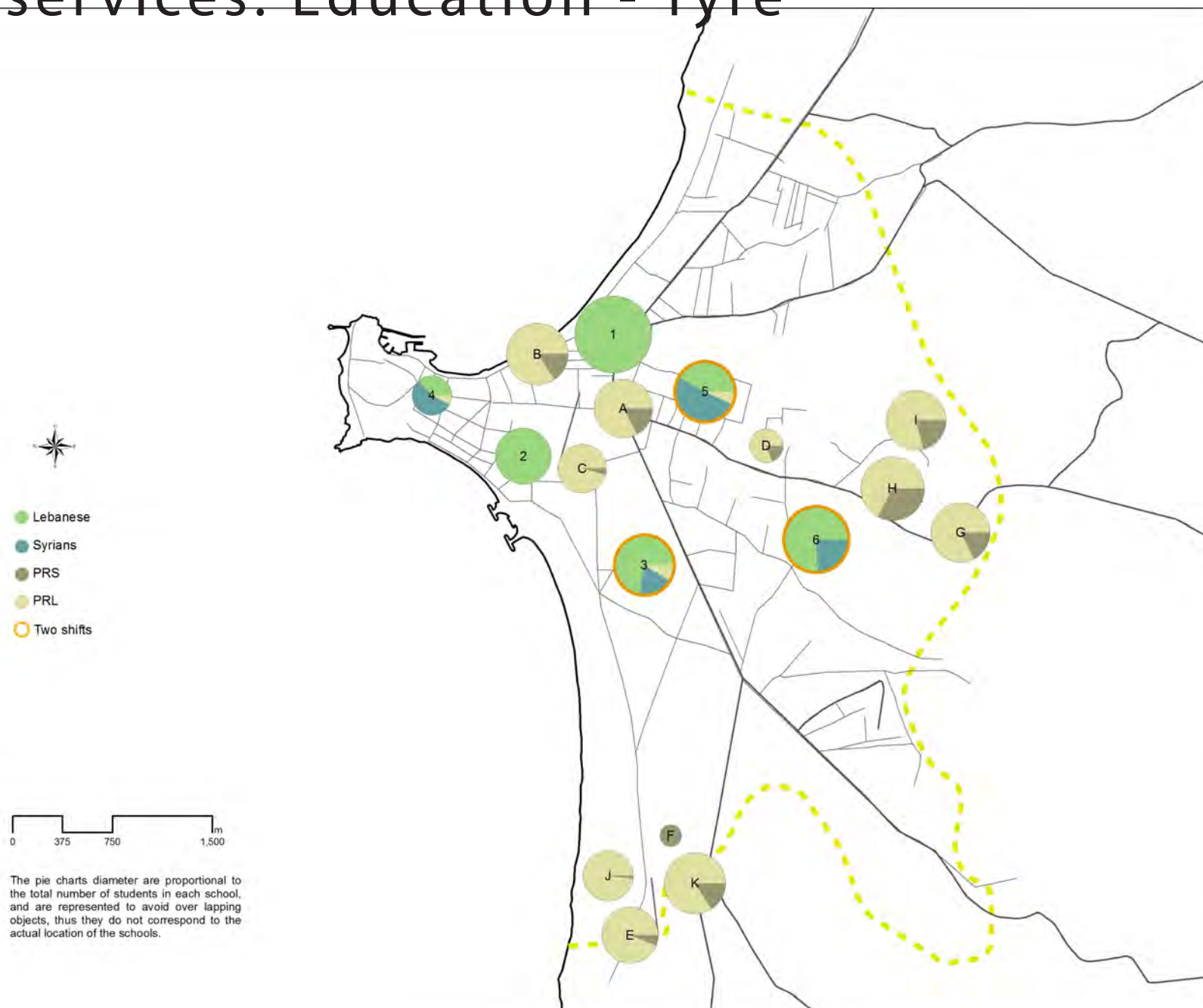
Basic Urban Services: Potable Water - Beirut



Social services: Education - Tripoli



Social services: Education - Tyre



CITY STRATEGIES



City Strategies

Building on sector-validated city profile:

- Recommend phased spatial strategic development directions (multi-sectoral);
- Tailored to city level & longer term planning to foster holistic inter sectoral planning
- Provide basis for UN joint planning in first instance and coordinated actions amongst wider range of stakeholders thereafter
- Pilot - Tripoli



Neighbourhood Profiles

Neighbourhood Profiles

- Identify locally defined neighbourhood boundaries
- Focussed on: Governance, Population, Buildings, Infrastructure, Social, Economy, Safety & Security
- Offer reliable data on population/cohorts compiled through thorough field surveys;
- Provide an understanding of the interlinkage between these issues (geographic or sectoral);
- Provide a solid platform to bring together different actors operating within the same space (joint planning);
- Actively engage municipalities throughout the whole process;
- Promote participatory techniques.

Neighbourhood Profiles - Geographic coverage

- Report Completed
 - Haddadine, Tripoli
 - Maachouk, Tyre
 - Nabaa, Bourj Hammoud, Beirut
 -
- Data collected
 - Qobbe, Tripoli
 -
- Data collection underway
 - Tabbaneh & Jabl Mohsn, Tripoli
 -
- Preparations underway
 - Saida Old City
 - Baalbeck & Zahle n'hoods (selection pending)
 - Southern suburbs Beirut (selection pending)
 - + another 20 n'hoods in autumn covering all 26 caza focused on urbanized areas but also to include semi-urban and village settings

Neighbourhood Profiles - Engagement

- Engagement with MoSA / SDCs
 - -Joint working protocol being refined now
 -
- UNICEF
 - -NPs to be enriched with household data, strengthened input on social dynamics and public service points

Neighbourhood Selection

Steps

1. Compile comprehensive list of neighbourhoods in target city , drawing on municipality knowledge and UNHCR list of localities.

2. Selection Criteria

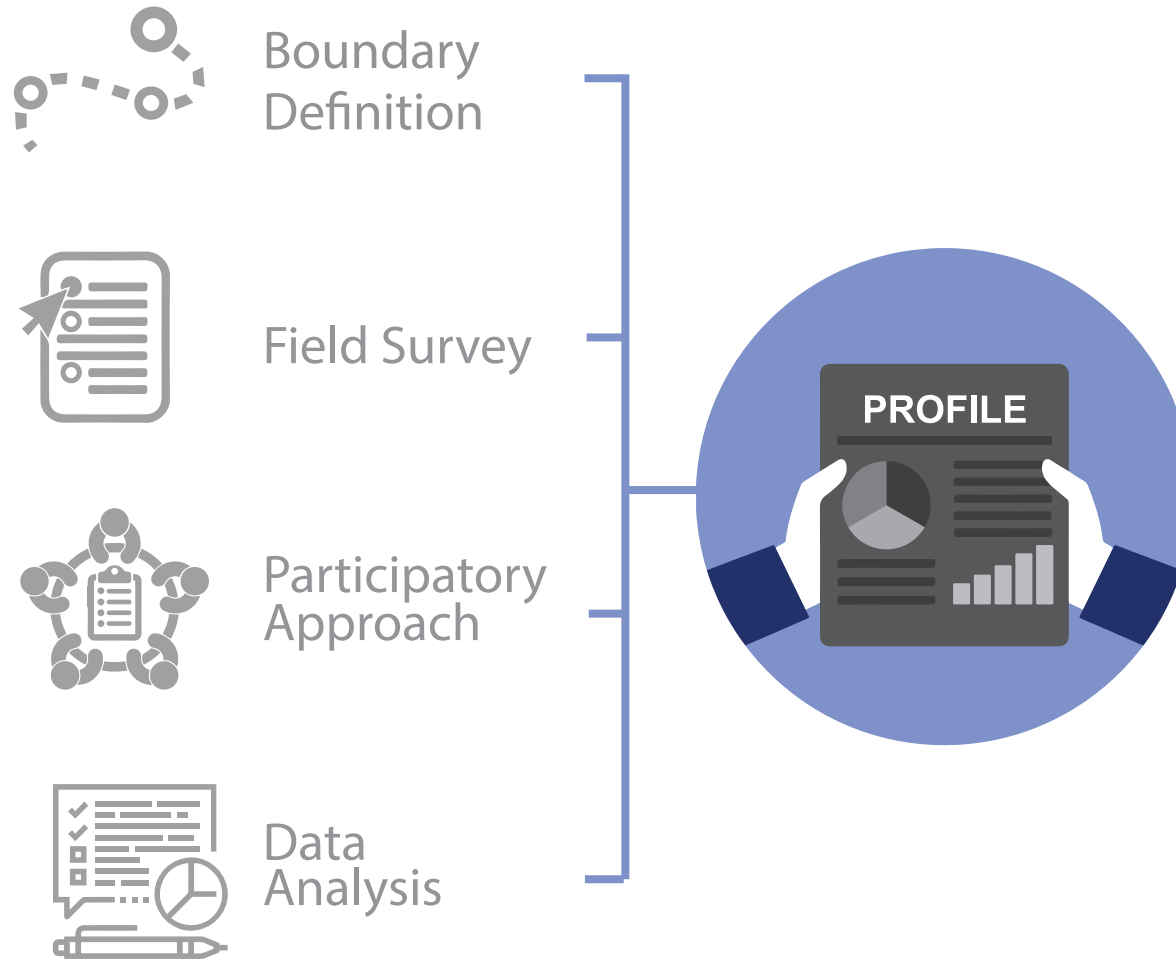
1	Vulnerability <ul style="list-style-type: none">• Lebanese <\$4/day• Refugees (all nationalities)
2	Stresses on access to services & infrastructure
3	Socio-economic competition/tensions
4	Security [Access to field]

3. Select neighbourhood

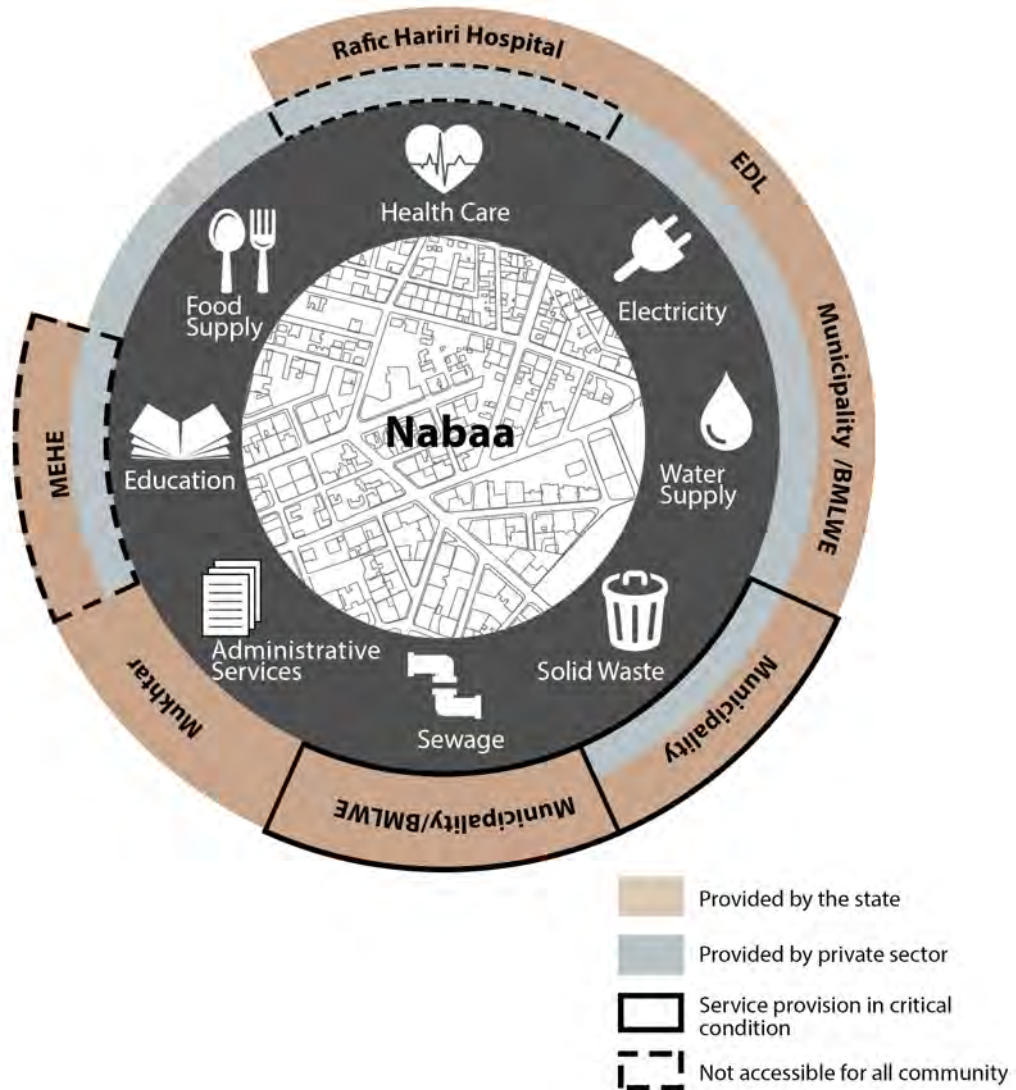
- Based on Selection Criteria Table
- Gain municipality endorsement

4. Identify boundary of selected neighbourhood

Neighbourhood Profile



Governance



Population

14,760

Total Residents in Nabaa

33%  3.5 people / residential unit
Lebanese

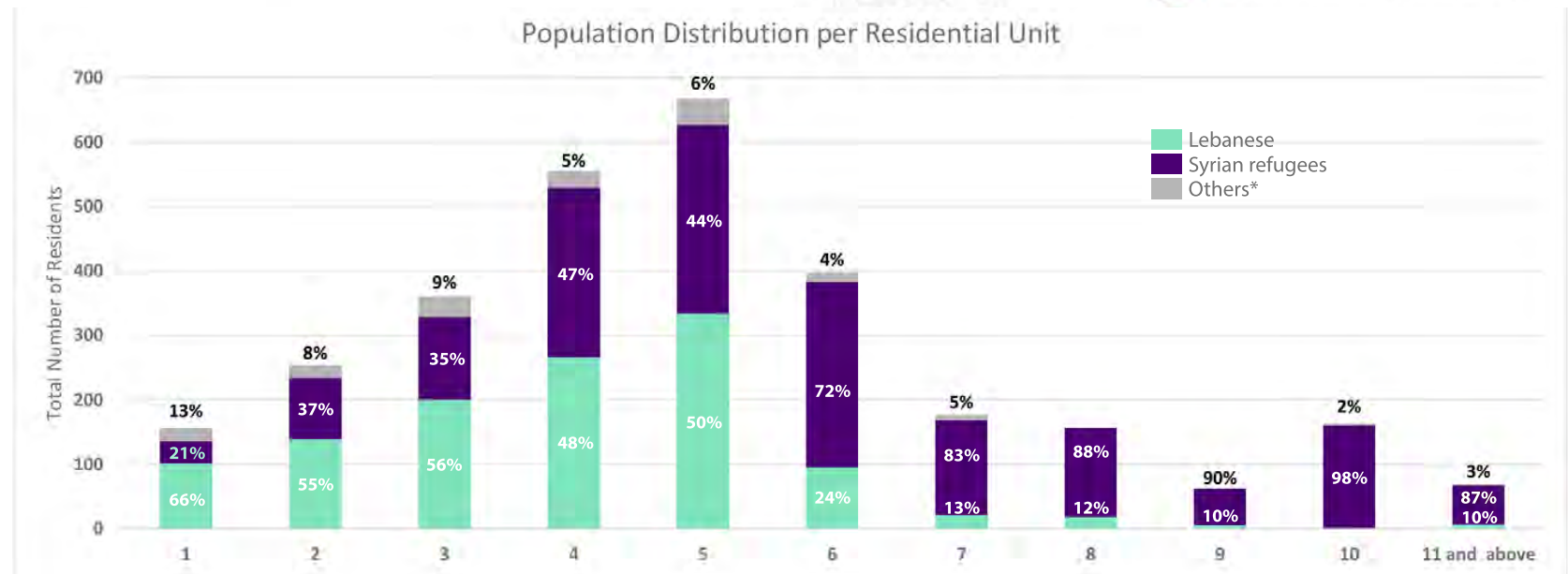
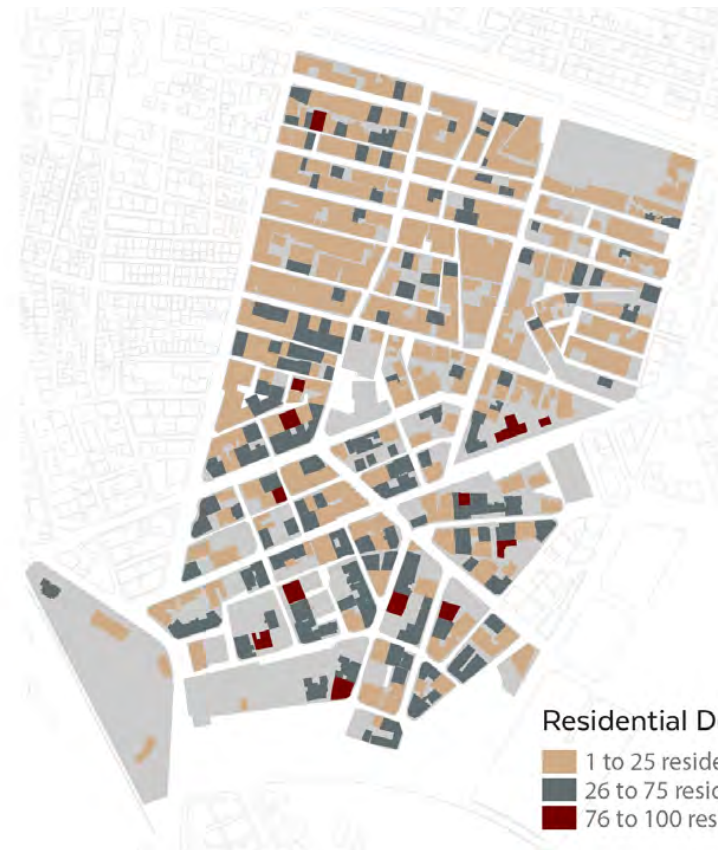
63%  5.3 people / residential unit
Syrian Refugees

0.2%  PRL

3.8%  3.9 people / residential unit
Other*

Source: UN-Habitat Lebanon, November 2016

Others* (African, Filipino, Sri Lankan, Bangladeshi, Indian...)

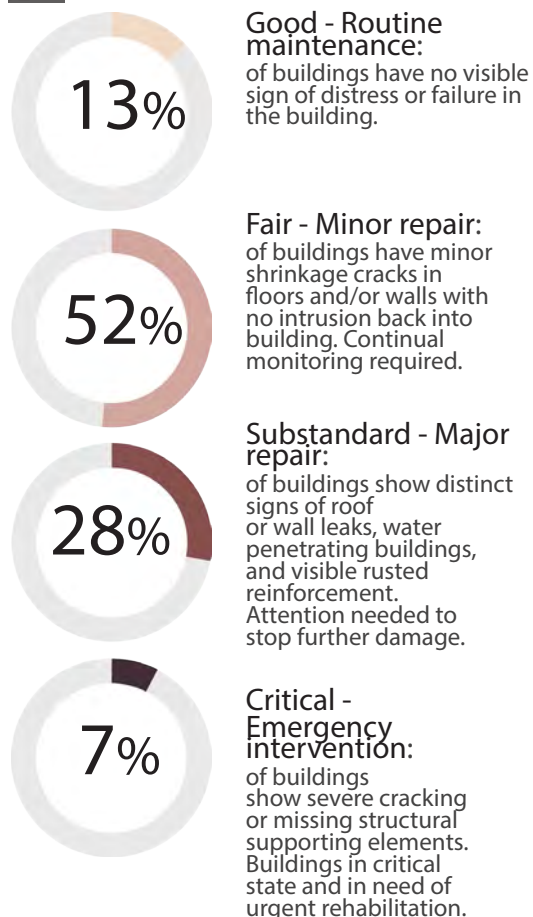


Housing

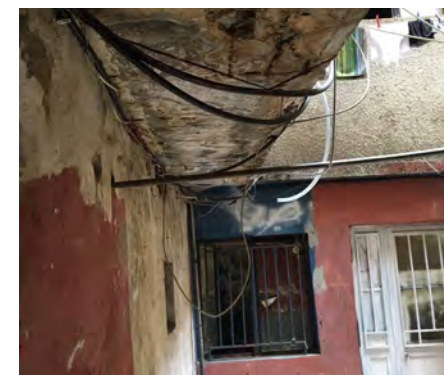
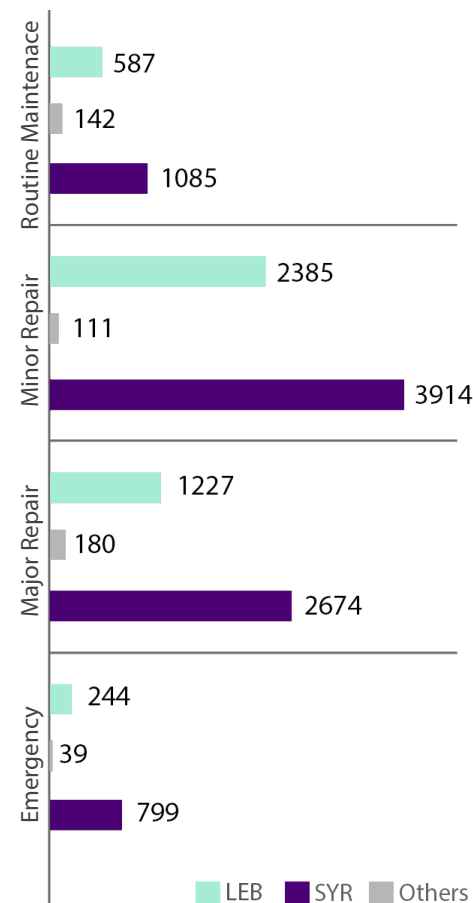
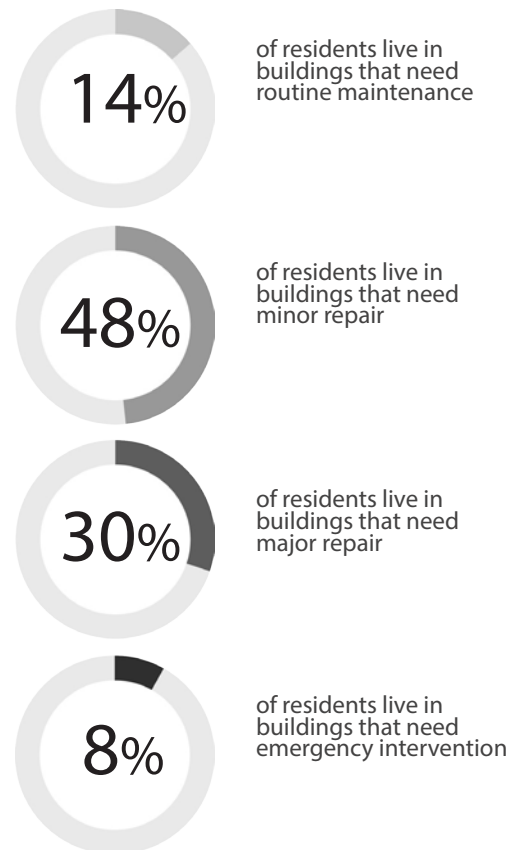
STRUCTURAL BUILDING CONDITION (NABAA)



BUILDINGS:



RESIDENTS:

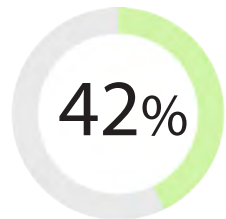


COMMON BUILDING AREAS (MAACHOUK)

(Means of exit, entrances, lighting, provisions for people with disabilities)

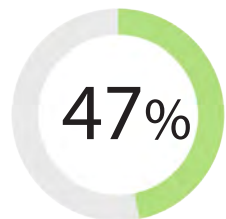


BUILDINGS:



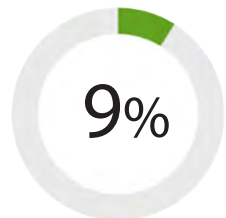
Good - Routine Maintenance:

of buildings have functional communal spaces with gated entrances, lighting provided in all areas, and easily accessible exit doors and staircases.



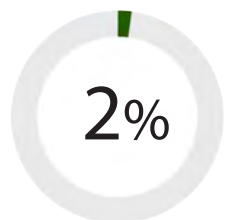
Fair - Minor Repair:

of buildings have minor defects in the communal spaces such as minor problems in entrance gates.



Substandard - Major Repair:

of buildings have serious defects in the communal spaces including malfunctioning gates, electrical wiring problems, and blocked staircases by obstructions that can be removed.

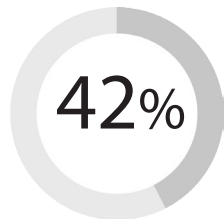


Critical - Emergency Intervention:

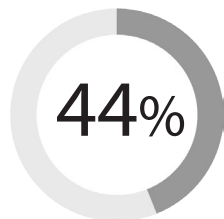
of buildings have no and/or damaged gates or lighting at the entrances with significant obstructions to staircases that can't be easily removed in case of emergencies.



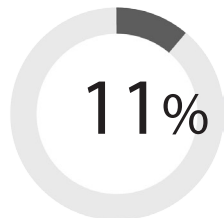
RESIDENTS:



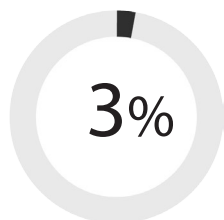
of residents live in buildings with common areas that need routine maintenance



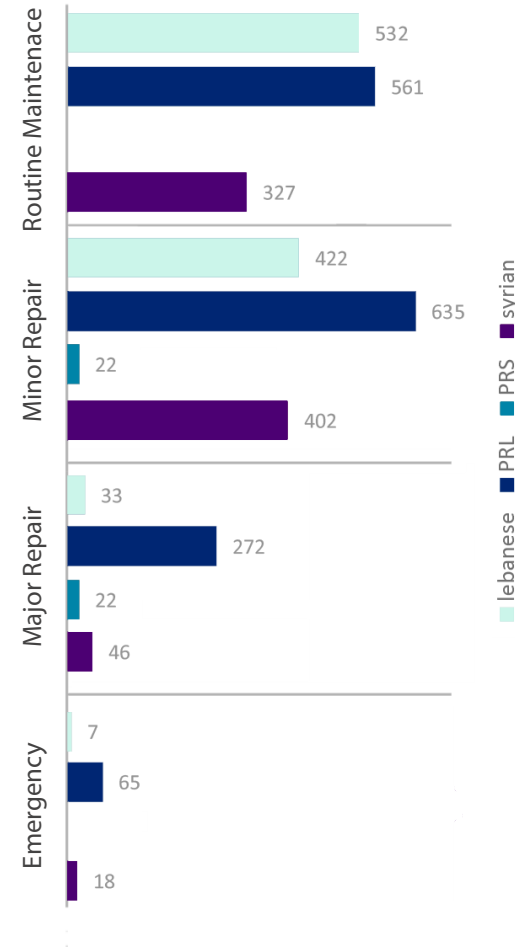
of residents live in buildings with common areas that need minor repair



of residents live in buildings with common areas that need major repair



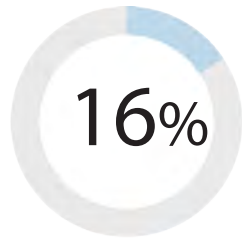
of residents live in buildings with common areas that need emergency intervention



BUILDING CONNECTIONS TO POTABLE WATER NETWORK

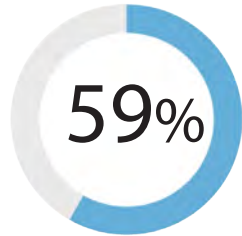


BUILDINGS:



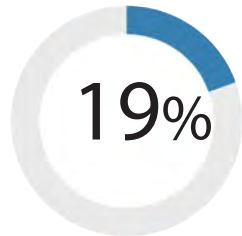
Functional:

of residential buildings are connected to water supply network with good quality pipes and no leakages.



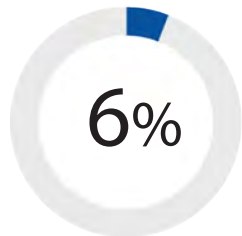
Malfunctional / connected:

of buildings are connected to the water supply network but with minor leakages and/or inappropriate installation of water pumps.



Serious defect / connected:

of buildings are connected to the network but pipes have major leakages and are at the end of their lifecycle.

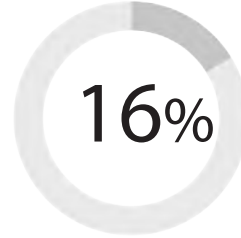


Missing / Not connected:

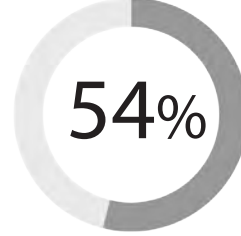
of buildings are not connected to water supply network, requires immediate attention



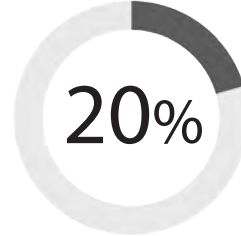
RESIDENTS:



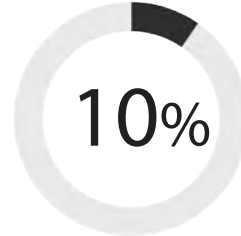
of residents live in buildings with a functional potable water network



of residents live in buildings with a malfunctioned yet connected potable water network



of residents live in buildings with serious defected yet connected potable water network

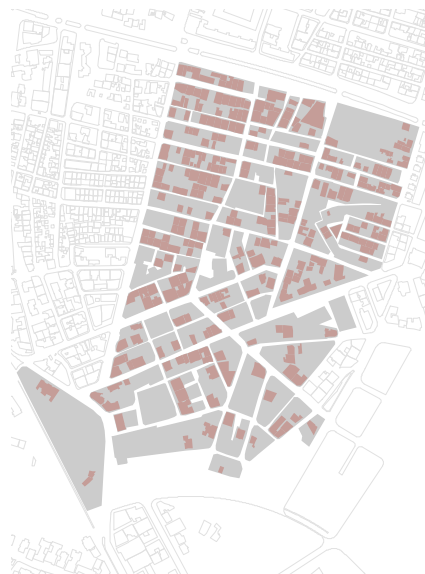


of residents live in buildings with no connection to water supply network

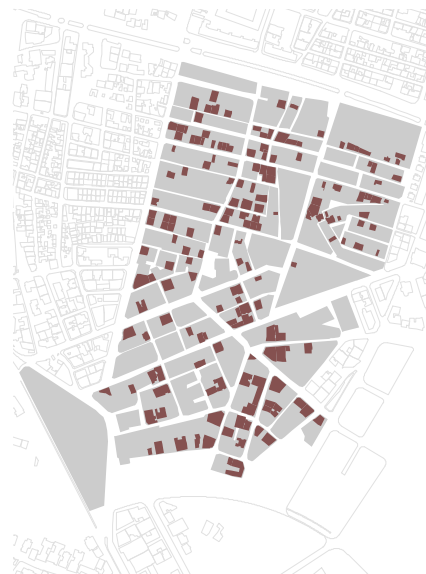
STRUCTURE CONDITION



Routine Maintenance



Minor Repair

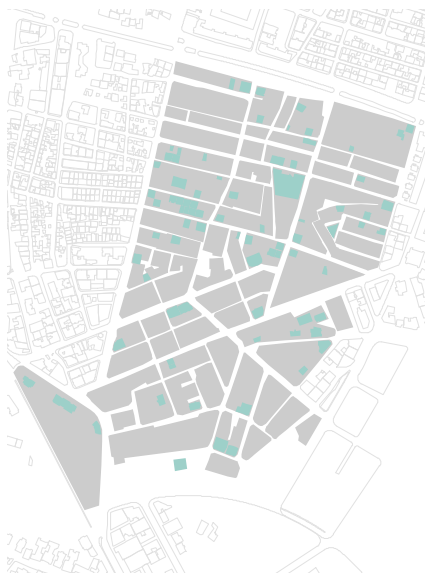


Major Repair

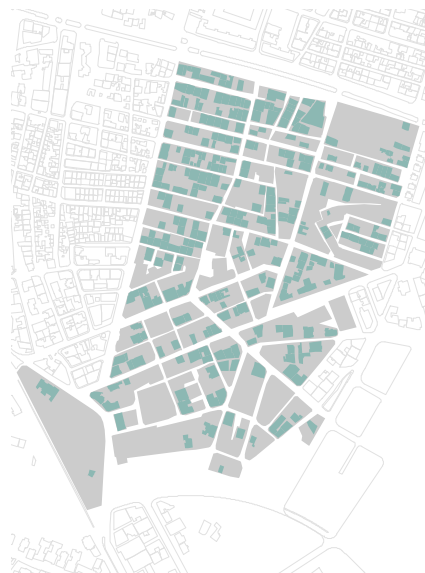


Emergency Intervention

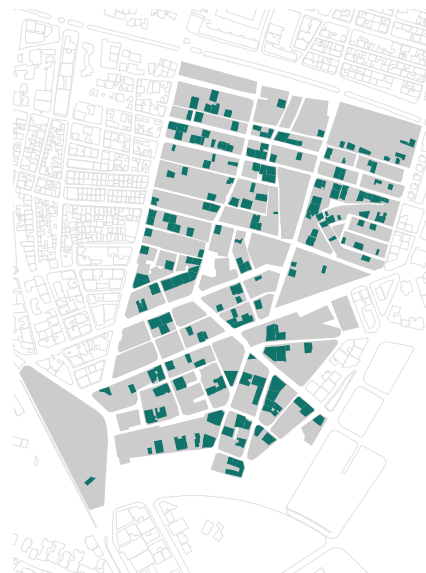
EXTERIOR BUILDING CONDITION



Routine Maintenance



Minor Repair

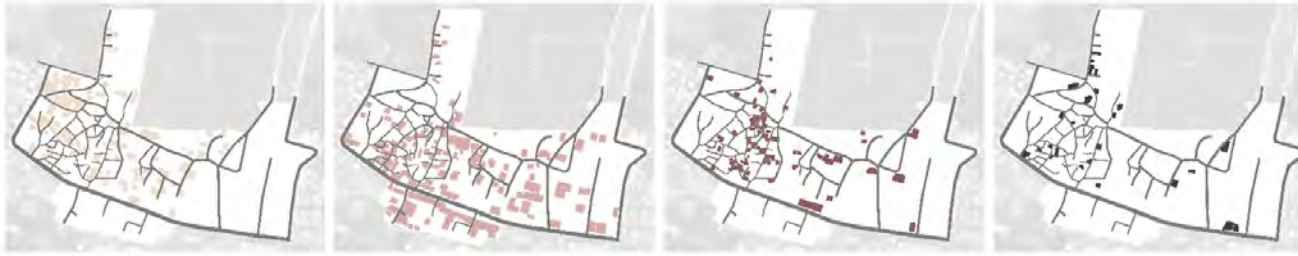


Major Repair



Emergency Intervention

Structural Condition



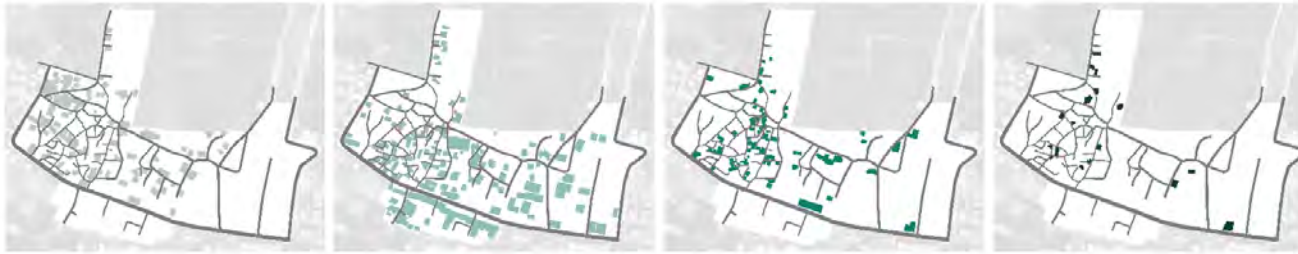
Routine Maintenance

Minor Repair

Major Repair

Emergency Intervention

Exterior Building



Routine Maintenance

Minor Repair

Major Repair

Emergency Intervention

Communal Spaces



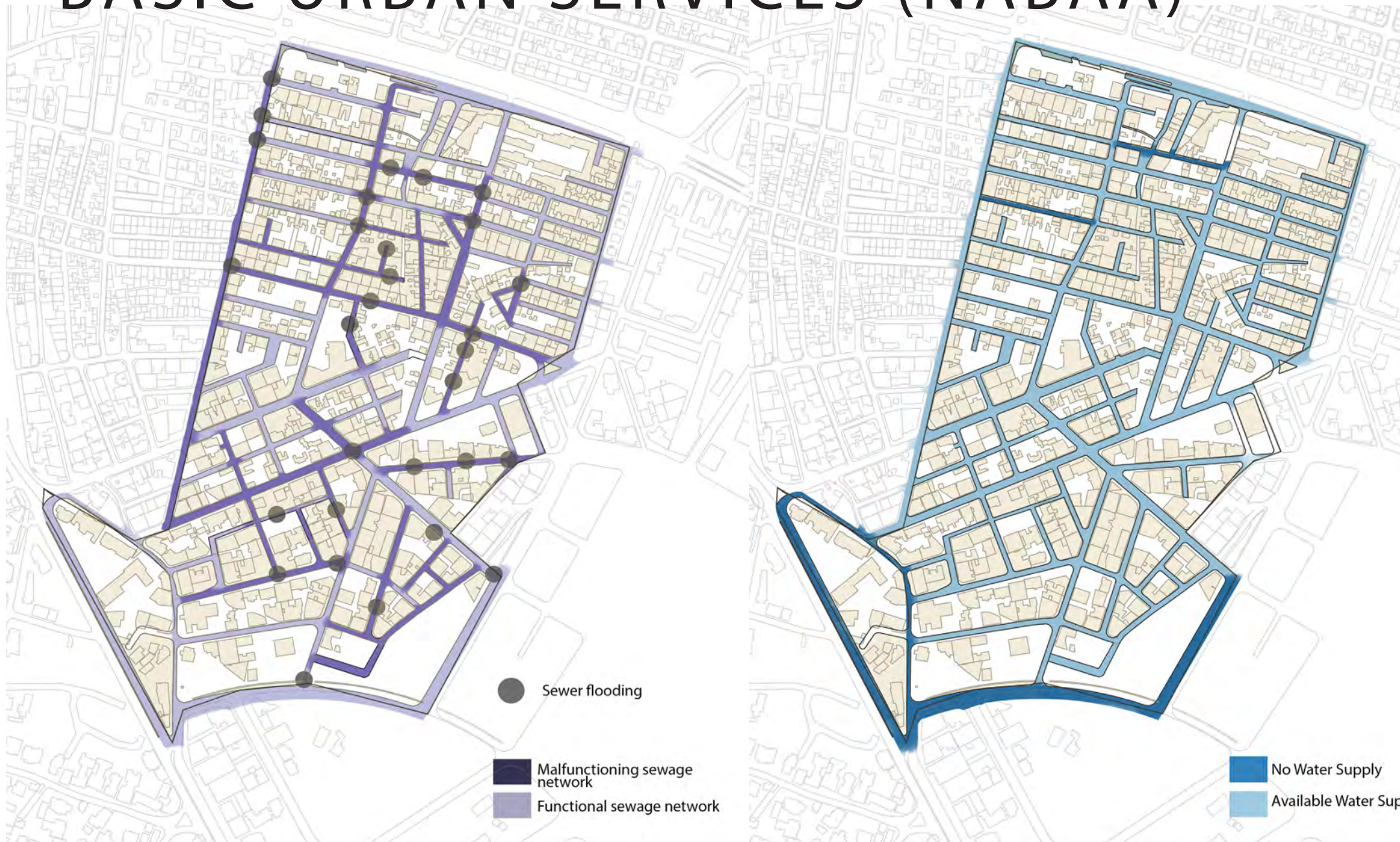
Functional

Minor Defects

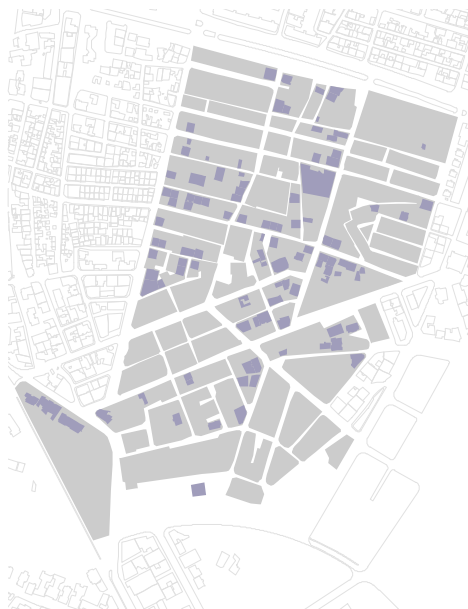
Serious Defects

Damaged/Missing

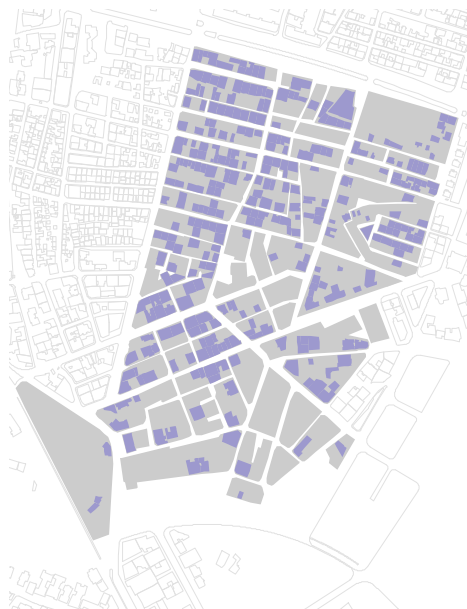
BASIC URBAN SERVICES (NABAA)



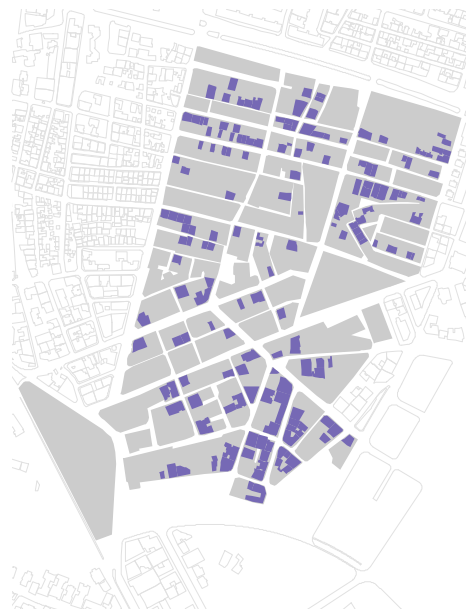
WASTEWATER NETWORK



Functional



Connected with minor defects

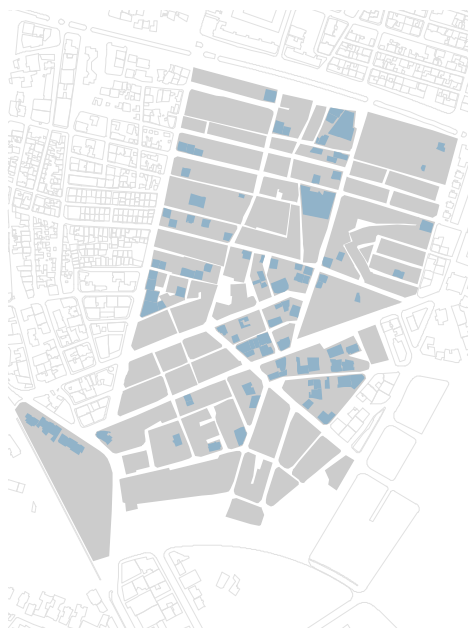


Connected with serious defects

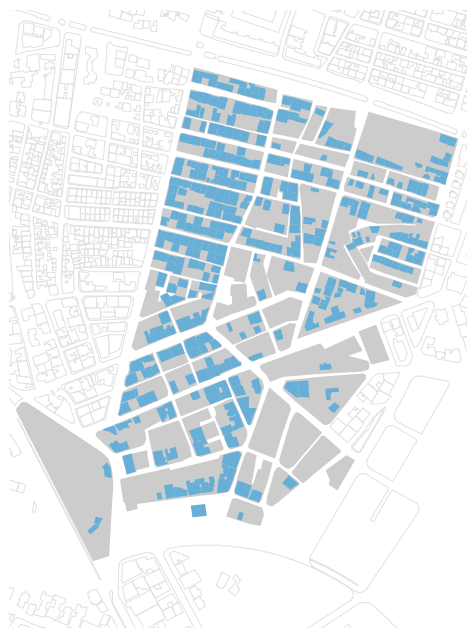


Missing/Not connected

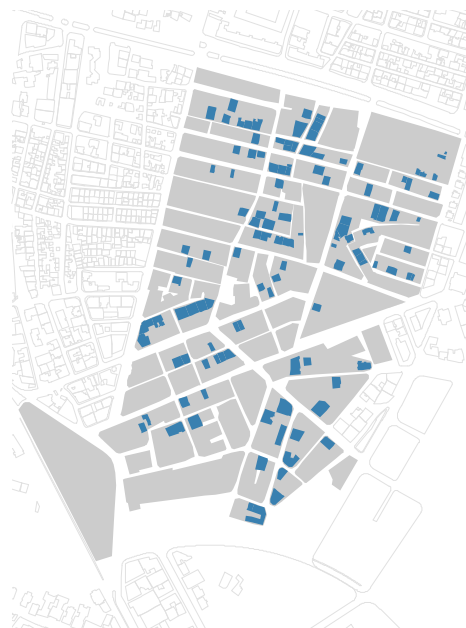
DOMESTIC WATER SUPPLY



Functional



Connected with minor defects

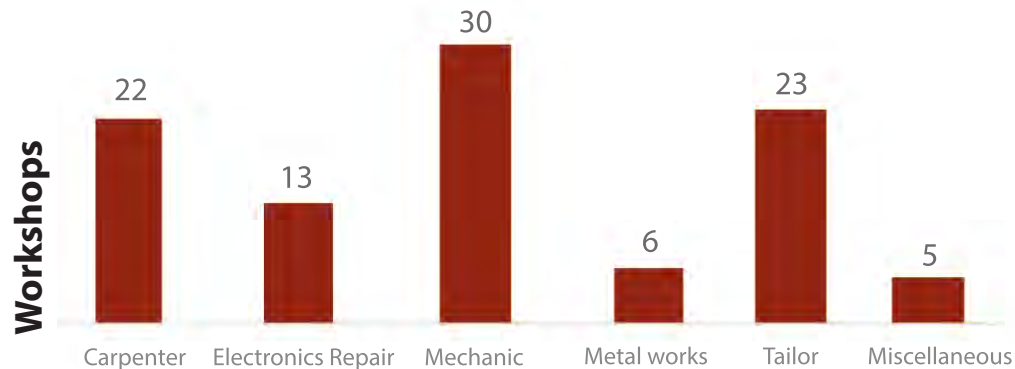


Connected with serious defects



Missing/Not connected

Local Economy



OWNERSHIP

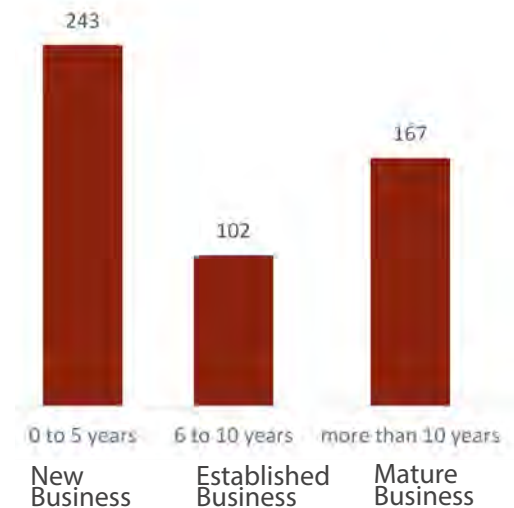
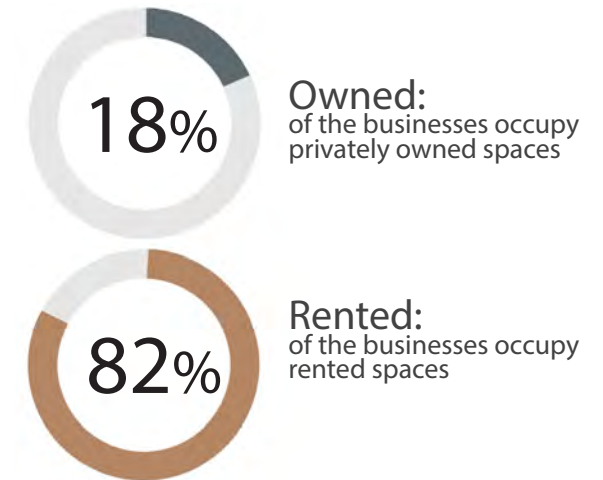
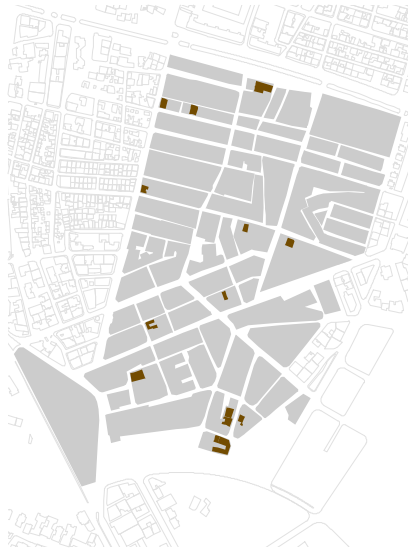


Figure 10 Business growth stage

WORKSHOPS



Carpenter



Electronic Repair



Mechanic



Metal works



Tailor



Other workshops

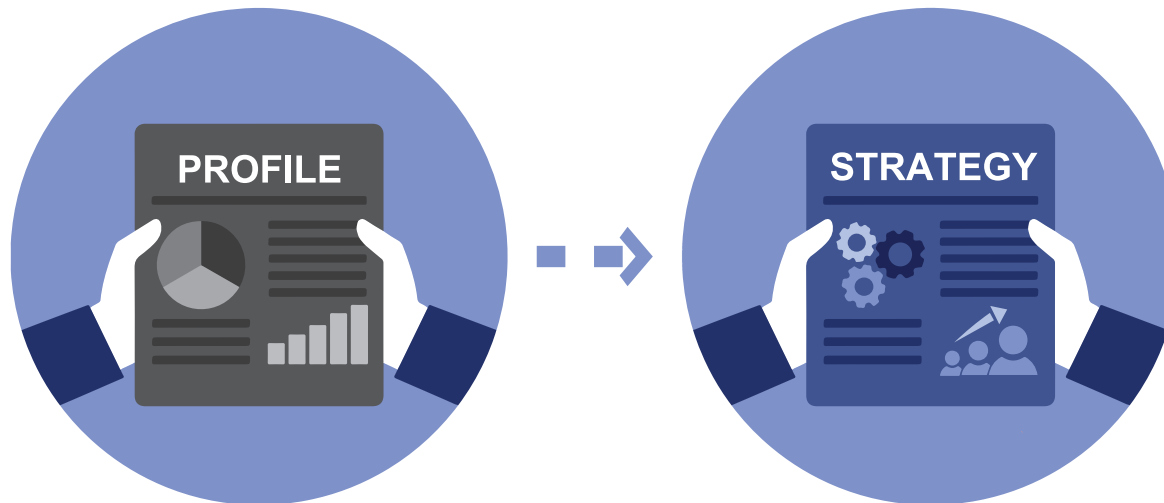


NEIGHBOURHOOD STRATEGIES

Neighbourhood Strategies

- Building on community & municipality-validated Neighbourhood Profile:
-
- Recommend phased local spatial development directions and projects (multi-sectoral);
- Provide basis for Humanitarian, Development and Public Sector coordination and planning;

Neighbourhood Strategy



Neighbourhood Strategy

Definition

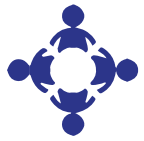
A multi-phased strategic action-oriented spatial tool.

IMMEDIATE RESPONSE : 6 MONTHS

SHORT-TERM RESPONSE : 12 MONTHS

MID-TERM RESPONSE : 2 YEARS

LONG-TERM RESPONSE : 4 YEARS



Community Development



Social Stability



Livelihoods



A Protective Child Environment



Gender Equality



Youth Empowerment



Urban Upgrading



Building Condition & Services



Storm and Waste Water



Solid Waste



Validated by Municipality



Validated by Neighbourhood Committee

UN HABITAT
FOR A BETTER URBAN FUTURE



BUILDING STRUCTURAL CONDITIONS

Main structure, skeleton, foundations, collapse risks.



■ IMMEDIATE RESPONSE 6 months

- Structurally reinforce failed or severely damaged elements (foundations, columns, load -bearing walls,

■ SHORT TERM RESPONSE 12 months

- Structurally stabilise signs of distress and correct by reinforcing cracks, leaks and visible water penetrations.

■ MID TERM RESPONSE 2 years

- Perform patch and repair on all minor cracks and potential areas for water penetration.



51

1;180

615,000

187

4,441

1,030,000

364

7141

985000

STORWATER AND WASTEWATER

NETWORK CONDITIONS

■ IMMEDIATE RESPONSE 6 months

- Upgrade wastewater network and separate it from storm water – Line 1.
- Remove the culvert Line 1, and upgrade stormwater networks in Lines 1 to 4 with all respective grates.
- Develop maintenance plan with the municipality and neighbourhood Committee.
- Start hygiene awareness-raising in the community and schools.

■ SHORT TERM RESPONSE 12 months

- Upgrade wastewater networks in Lines 2 to 8.
- Upgrade stormwater networks in Lines 5 to 8.

■ MID TERM RESPONSE 2 years

- Upgrade all internal wastewater/ stormwater arterials and connect them to previously installed lines.
- Patch and repair all water ponding areas.

■ LONG TERM RESPONSE 4 years

- Upgrade stormwater collector and extend it to Beirut River.
- Upgrade wastewater collector and extend it to waste

- Upgrade stormwater collector and extend it to Beirut River.
- Upgrade wastewater collector and extend it to waste

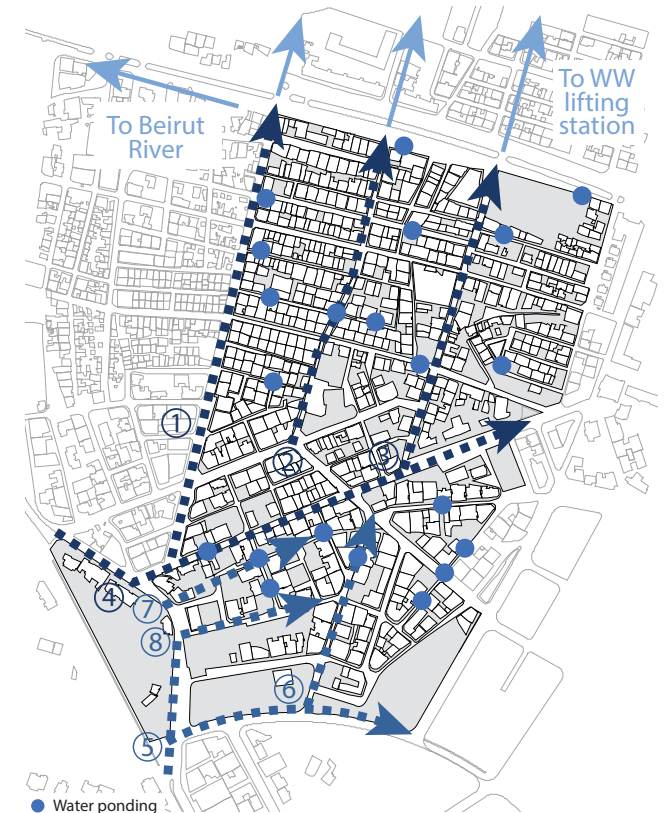


Figure 9 : Stormwater and wastewater networks response plan.



NEIGHBOURHOOD Projects

Neighbourhood Projects

- Has included:
- Infrastructure, water purification systems, stormwater-sewage system separation, public spaces, sports facilities/playground, Information Centre on Housing, Land & Property issues

Projects

Public space
Nabaa, Beirut



Pool conversion to public
Haddadine, Tripoli



Projects

Multi-Purpose Building & Space *Maachouk, Sour*



A photograph of a crowded, informal urban settlement. In the foreground, a large white satellite dish is mounted on a wall, with Arabic text and a date written on it. Behind it, a patterned sofa sits on a raised platform. Laundry, including white shirts and a black and white patterned cloth, hangs on lines across the scene. A small white plastic chair is visible on a higher level. The background shows more buildings and a blue water tank. The overall scene depicts a dense, lived-in environment.

Concluding Remarks

- Increased interest in area-based approach
-
- UN-Habitat working with UNHCR to establish a neighbourhood-level reporting geography within ActivityInfo
-
- UN-Habitat welcomes opportunity to coordinate with partners undertaking neighbourhood-scale data gathering/analysis, in the interests of producing nationally comparable data



Q & A

71 378913



Q & A

UN  HABITAT
FOR A BETTER URBAN FUTURE