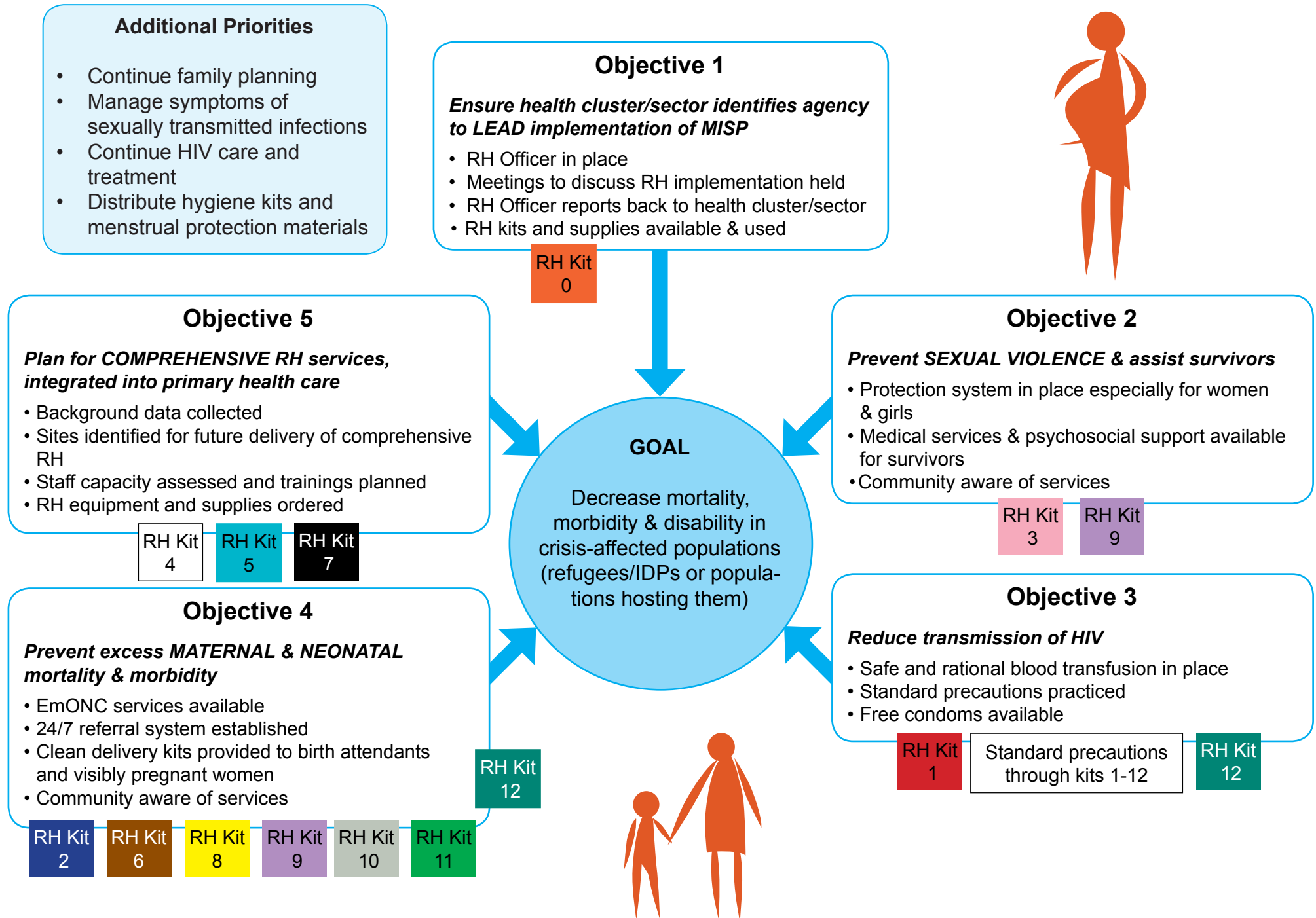


Minimum Initial Service Package (MISP) for Reproductive Health



	CRISIS	POST-CRISIS/PREPAREDNESS	The RH Kit is designed for use for a 3-month period for a varying population number and is divided into three "blocks" as follows:		
	Crude mortality rate >1 death/10,000/day	Mortality returns to level of surrounding populations	Block 1: Six kits to be used at the community and primary health care level for 10,000 persons / 3 months		
SUBJECT AREA	MINIMUM (MISP) RH SERVICES	COMPREHENSIVE RH SERVICES	KIT NUMBERS	KIT NAME	COLOR CODE
FAMILY PLANNING	<ul style="list-style-type: none"> Provide contraceptives, such as condoms, pills, injectables and IUDs, to meet demand 	<ul style="list-style-type: none"> Source and procure contraceptive supplies Provide staff training Establish comprehensive family planning programs Provide community education 	Kit 0	Administration	Orange
			Kit 1	Condom (Part A is male condoms + Part B is female condoms)	Red
			Kit 2	Clean Delivery (Individual) (Part A + B)	Dark blue
			Kit 3	Rape Treatment	Pink
			Kit 4	Oral and Injectable Contraception	White
GENDER-BASED VIOLENCE	<ul style="list-style-type: none"> Coordinate mechanisms to prevent sexual violence with the health and other sectors/clusters Provide clinical care for survivors of rape Inform community about services 	<ul style="list-style-type: none"> Expand medical, psychological, social and legal care for survivors Prevent and address other forms of GBV, including domestic violence, forced/early marriage, female genital cutting, Provide community education Engage men and boys in GBV programming 	Kit 5	STI	Turquoise
			Block 1 contains six kits. The items in these kits are intended for use by service providers delivering RH care at the community and primary care level. The kits contain mainly medicines and disposable items. Kits 1, 2 and 3 are subdivided into parts A and B, which can be ordered separately.		
			Block 2: Five kits to be used at the community and primary health care level for 30,000 persons / 3 months		
			Kit 6	Clinical Delivery Assistance (Part A + B)	Brown
			Kit 7	IUD	Black
MATERNAL AND NEWBORN CARE	<ul style="list-style-type: none"> Ensure availability of emergency obstetric and newborn care services Establish 24/7 referral system for obstetric and newborn emergencies Provide clean delivery packages to visibly pregnant women and birth attendants Inform community about services 	<ul style="list-style-type: none"> Provide antenatal care Provide postnatal care Train skilled attendants (midwives, nurses, doctors) in performing emergency obstetric and newborn care Increase access to basic and comprehensive emergency obstetric and newborn care 	Kit 8	Management of Complications of Abortion	Yellow
			Kit 9	Suture of Tears (Cervical and vaginal) and Vaginal Examination	Purple
			Kit 10	Vacuum Extraction for Delivery (Manual)	Grey
			Block 2 is composed of five kits containing disposable and reusable material. The items in these kits are intended for use by trained health care staff with additional midwifery and selected obstetric and neonatal skills at the health centre or hospital level.		
			Block 3: Two kits to be used at referral hospital level for 150,000 persons / 3 months		
STIs, INCLUDING HIV, PREVENTION & TREATMENT	<ul style="list-style-type: none"> Ensure safe and rational blood transfusion practice Ensure adherence to standard precautions Guarantee the availability of free condoms Provide syndromic treatment as part of routine clinical services for patients presenting for care Provide ARV treatment for patients already taking ARVs, including for PMTCT, as soon as possible 	<ul style="list-style-type: none"> Establish comprehensive STI prevention and treatment services, including STI surveillance systems Collaborate in establishing comprehensive HIV services as appropriate Provide care, support and treatment for people living with HIV/ AIDS Raise awareness of prevention, care, treatment services of STIs 	Kit 11	Referral level for Reproductive Health (Part A + B)	Fluorescent Green
			Kit 12	Blood Transfusion	Dark Green
			Block 3 is composed of two kits containing disposable and reusable supplies to provide comprehensive emergency obstetric and newborn care at the referral (surgical obstetrics) level. It is estimated that a hospital at this level covers a population of approximately 150,000 persons. Kit 11 has two parts, A and B, which are usually used together but which can be ordered separately.		
			NOTE: Agencies should not depend solely on the Inter-agency RH Kits and should plan to integrate the procurement of MISP/RH supplies in their routine health procurement systems.		

How to order RH Kits for Crisis Situations booklet:

UNFPA – Contact local country offices or
220 East 42nd Street
New York, NY 10017 USA
Tel: + 1 212 297 5245
Fax: +1 212 297 4915
Email: hru@unfpa.org
www.rhrc.org/resources/rhrkit.pdf

How to order RH Kits:

UNFPA Procurement Services Section
Emergency Procurement Team
Midtermolen 3
2100 Copenhagen
Denmark
Tel: +45 3546 7368 / 7000
Fax: + 45 3546 7018
procurement@unfpa.dk

RESOURCES:

- ▶ Reproductive Health in Humanitarian Settings: An Inter-agency Field Manual: http://www.iawg.net/resources/field_manual.html
- ▶ MISP Distance Learning Module: <http://misp.rhrc.org>
- ▶ SPRINT Facilitator’s Manual for SRH Coordination: www.ippfeseaor.org/en/Resources/Publications/SPRINTFacilitatorsManual.htm
- ▶ UNFPA/Save the Children Adolescent Sexual and Reproductive Health Toolkit in Humanitarian Settings: A companion to the Inter-Agency Field Manual on Reproductive Health in Humanitarian Settings: www.unfpa.org/public/publications/pid/4169
- ▶ RHRC Monitoring and Evaluation Toolkit: www.rhrc.org/resources/general_fieldtools/toolkit/
- ▶ CDC RH Assessment Toolkit for Conflict-Affected Women: <http://www.cdc.gov/reproductivehealth/Refugee/RefugeesProjects.htm>
- ▶ Inter-agency Working Group on Reproductive Health in Crises: www.iawg.net
- ▶ Reproductive Health Response in Crises (RHRC) Consortium: www.rhrc.org