

CCCM SITE MONITORING: Ohn Taw Gyi (North) Camp


March-2017


Township: Sittwe (Rakhine, MYANMAR)

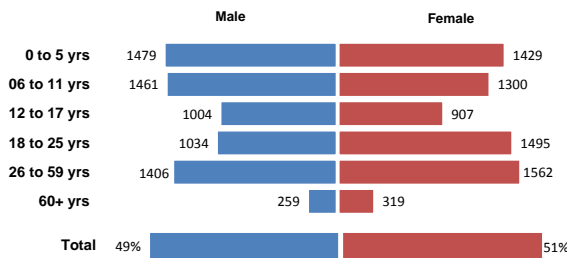
Geographic Data: Vil. Tract / Town : Khaung Doke Kar

Village/Ward : Baw Du Hpa

Demographic data

 13,655
people


 2,640
households




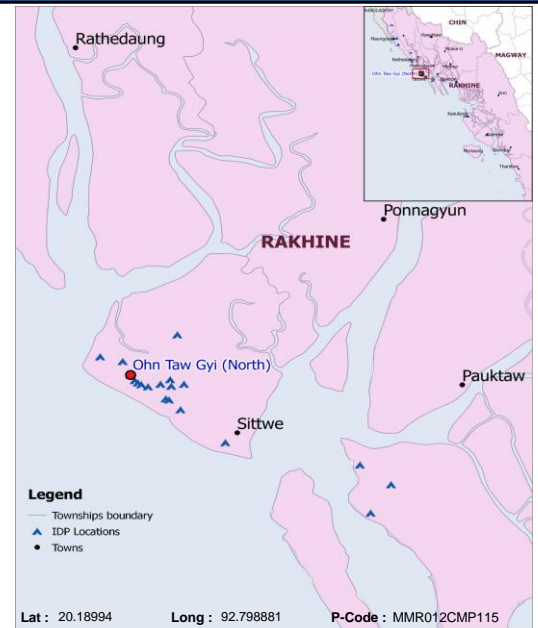
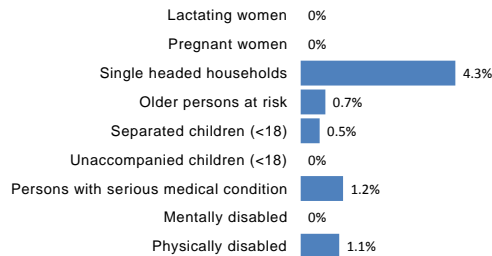
Vulnerabilities data

 56%
children

 4%
elderly

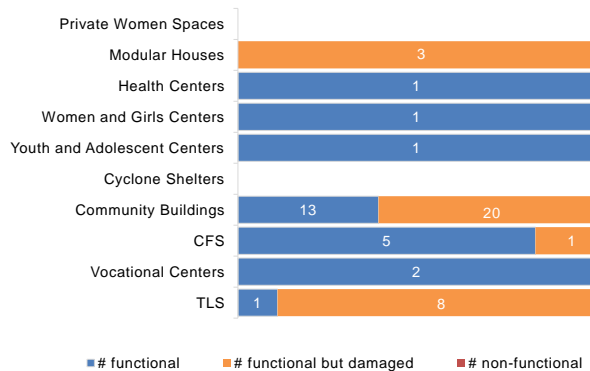
 26
new borns

 7
deaths

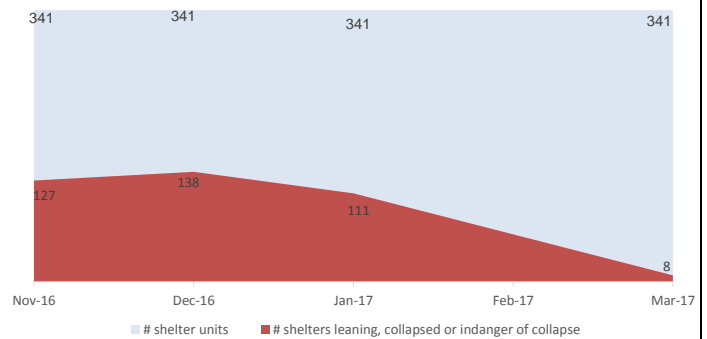


Camp Management or Focal Point Agency: DRC

Community Infrastructure damage



Shelter rehabilitation and repair



Sector Overview



CCCM	# of coordinations meetings with CMCs	1
	# of meetings with service providers	1
Community Based Group	# of meetings held	
	Men's Sports Club	2
	Elderly Group(EG)	1
	Camp Women's Association	1



Health	Health facility presence	Yes
	# of NGO clinics	1
	# of Government clinics	1
	IDPs access to nearby health facility	Yes

NFI

NFI	# of HHs receiving WaSH consumables (soap, towel)	0
	# of HHs receiving Sanitary Kits / Dignity Kits	0



Shelter	# of temporary shelters (8 – 10 units)	341
	# of informal / makeshift shelters	27
	Date of the last Shelter Cluster assessment	No Info

Functional Non-functional

	# Lightings at Latrines	25	9
	#Lighting at other areas of camps	18	10
WASH	# of Hand Pumps	188	48 (20%)
	# of Ponds	No Info	No Info
	# of Latrines	685	95 (12%)
	# of Solid Waste Management System	No Info	No Info



Service Delivery Actors in the Camp

