

CCCM SITE MONITORING: Sin Tet Maw Camp

Township: Pauktaw (Rakhine, MYANMAR)

April-2017

Geographic Data: Vil. Tract / Town : Sin Tet Maw

Village/Ward : Sin Tet Maw (Ku Lar)

Demographic data



2,405
people



-
households

0 to 5 yrs

06 to 11 yrs

12 to 17 yrs

18 to 25 yrs*

26 to 59 yrs

60+ yrs

Male

Female

206

211

198

218

135

139

575

641

0

35

47

Total

48%

52%

Vulnerabilities data

Lactating women 0%

Pregnant women 0%

Single headed households 0%

Older persons at risk 4.2%

Separated children (<18) 0.1%

Unaccompanied children (<18) 0.1%

Persons with serious medical condition 1.5%

Mentally disabled 0%

Physically disabled 0.4%



46%
children



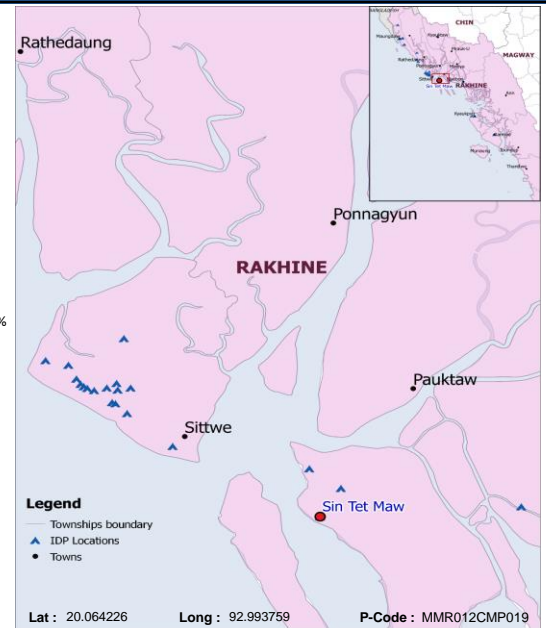
3%
elderly



2
new borns

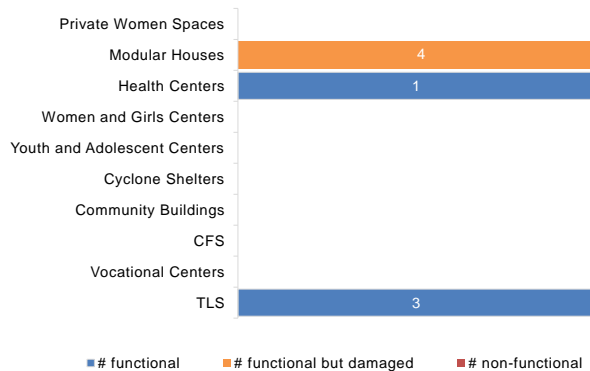


No info
deaths

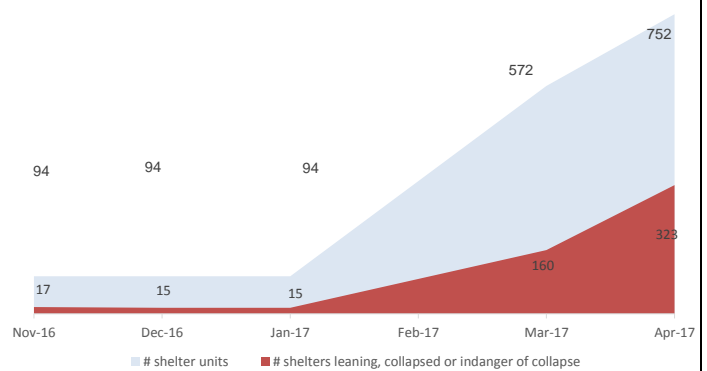


Camp Management or Focal Point Agency: DRC

Community infrastructure damage



Shelter rehabilitation and repair



Sector Overview



CCCM

of coordinations meetings with CMCs

1

of meetings with service providers

1

Community Based Group

Camp Management Committee (CMC)

of meetings held

1



Health

Health facility presence

Yes

of NGO clinics

2

of Government clinics

0

IDPs access to nearby health facility

0

NFI

NFI

of HHs receiving WaSH consumables (soap, towel)

0

of HHs receiving Sanitary Kits / Dignity Kits

0



Shelter

of temporary shelters (8 – 10 units)

752

of informal / makeshift shelters

26

Date of the last Shelter Cluster assessment

No Info

Functional

Non-functional

Lightings at Latrines

48

5

#Lighting at other areas of camps

5

0



WASH

of Hand Pumps

5

7 (58%)

of Ponds

No Info

No Info

of Latrines

112

106 (49%)

of Solid Waste Management System

No Info

No Info



Service Delivery Actors in the Camp

