

This contingency plan targets population in four townships in Rakhine possibly affected by a cyclone based on historical data. In addition to these four townships, Maungdaw and Thandwe townships are identified as high risk areas.

AREAS AFFECTED

Sittwe, Kyaukphyu, Pauktaw and Myebone

475,000

Population affected



EDUCATION

Lead agency: UNICEF

Contact information: Yukako Fujimori
(yfujimori@unicef.org)

PRIORITY ACTIVITIES

- Set up Temporary Learning Spaces (TLS) with minimum infrastructure
- Provide essential education and recreation supplies for affected children



FOOD SECURITY

Lead agencies: WFP and FAO

Contact information: Khalid Khan Khatki
(Khalid.KhanKhatki@fao.org) and Masae Shimomura
(masae.shimomura@wfp.org)

PRIORITY ACTIVITIES

- Distribute ready to eat food and High Energy Biscuits (HEB).
- Provide life-saving food assistance consisting of basic food basket (including cash).



HEALTH

Lead agency: WHO

Contact information: Philip Mann
(mannp@who.int)

PRIORITY ACTIVITIES

- Support disease surveillance and coordination for patient referral systems.
- Support for essential medicines and early resumption/revitalization of primary health services.
- Ensure continuity of life-saving newborn/child health care and reproductive health care services.



NUTRITION

Lead agency: UNICEF

Contact information: Martin Eklund
(meklund@unicef.org)

PRIORITY ACTIVITIES

- Establish and maintain facilities for treatment of children with acute malnutrition.
- Provide multiple micronutrient supplementation to children 6-59 months and pregnant and lactating women.



PROTECTION

Lead agency: UNHCR

Contact information: Laura Payne
(paynel@unhcr.org)

PRIORITY ACTIVITIES

- Establish one child friendly space per township and mobile case management teams.
- Establish safe spaces and mobile outreach services for women, girls and survivors of GBV.
- Distribute dignity kits and other protection kits as needed.

- Establish an emergency complaints mechanism.



SHELTER, NON-FOOD ITEMS & CAMP MANAGEMENT AND CAMP COORDINATION

Lead agency: UNHCR

Contact information: Edward Benson
(benson@unhcr.org)

PRIORITY ACTIVITIES

- Provide immediate life-saving shelter such as tarpaulins, basic tools and fixings for damaged homes, along with appropriate non-food items.
- If camps are being formed assess immediate camp management and camp coordination needs



WASH

Lead agency: UNICEF

Contact information: Sunny Guidotti
(sguidotti@unicef.org)

PRIORITY ACTIVITIES

- Provide emergency water supply and water treatment tablets/sachets; clean and chlorinate water points.
- Provide emergency latrines in evacuation centers where the affected people remain more than a week and in IDP camps.
- Distribute hygiene kit and disseminate emergency hygiene messages.

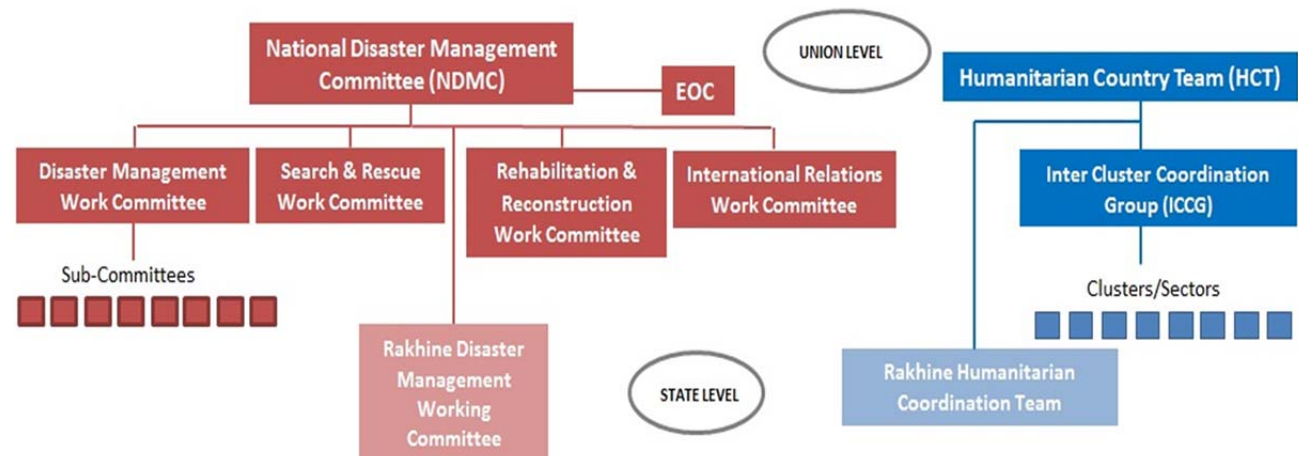
RAKHINE CONTINGENCY PLAN - 2016

SOP Guidance in the first hours of the response

Early Warning Phase	
Contact OCHA to inform/verify threat and cross-check information at field level	All
Alert RC/HCR on the threat	OCHA
Contact GoUM (MoSWRR) to inform/verify threat	RC/HC
Alert HCT and ICCG	OCHA
Send Flash Update (email) to partners	OCHA
Inform Regional Offices and HQ	All
Analyze possible need for an UNDAC team	HCT
Gather relevant data and maps	OCHA & MIMU
Convene HCT meeting (define capacity in country and possible additional resources needed)	OCHA
Assign/confirm reporting and information management focal points	Sectors
Alert the HACG to be on stand-by	OCHA
Response Phase - Coordination and Management	
Obtain overview of the scale and scope of the emergency	RC/HC & OCHA
Once the threat is confirmed contact the government to know: i) National capacity to respond, ii) Intent to declare a state of emergency, iii) Intent to welcome international assistance	RC/HC
Decide on activation of additional clusters, as deemed necessary	HCT
Decide on the need for developing a Flash Appeal and requirements for CERF/ERF	RC/HC & HCT
Organize a briefing for donors and member states	OCHA
Response Phase - Operational Capacity & Others	
Activate contingency response plan	RC/HC
Request GoUM logistical assistance for site visits if required.	OCHA
If case of bureaucratic impediments, advocate with GoUM for similar system used for 2015 floods	RC/HC & OCHA
Contact with private sector partners and identify possible areas of support (UMFCCI)	OCHA
Cash WG to advise on cash feasibility	WFP
Liaise with appropriate GoUM institutions on security matters	UNDSS
Gather relevant secondary data and maps for preliminary scenario definition	OCHA & MIMU
Analyze the need for joint multi-sector needs assessment using agreed methodology	OCHA & ICCG
Issue regular Situation Reports (daily if necessary)	OCHA

Coordination Arrangements

The Government of the Union of Myanmar (GoUM) holds the responsibility for disaster management through the National Disaster Management Committee (NDMC) chaired by the Vice-President and co-chaired by the Minister of Social Welfare Relief and Resettlement, and the Minister of Home Affairs.



CONTACTS

National Emergency Operations Center (EOC) – Nay Pyi Taw
 Director - U Win Htein Kyaw
myanmareoc.rrd@gmail.com

OCHA
 Head of Office - Mark Cutts
cutts@un.org