



Insecurity in the Lake Chad Basin – Regional Impact

Situation Report #26

31 May 2017

In Numbers (OCHA's 9 May update)

- 10.7 m** people affected
- 4** countries affected
- 2.4 m** people displaced
- 6.9 m** people in need of food assistance during the lean season

1,739,590 People assisted in April 2017 (83 percent achievement)
54 percent are women and 26 percent are children from 6-59 months

GENDER MARKER 2A EMOP 200777

Global Humanitarian Funding (USD) Overall: **1.5 billion¹**
WFP share²: **584.5 million**

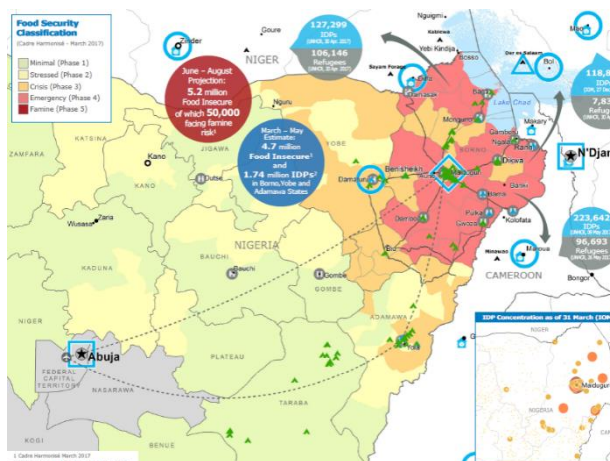
WFP 6-month Net Funding³ Requirements **USD 251.7 million**

EMOP 200777 **USD 584.5 million**

Food Security Cluster* **USD 645 million**

Logistics Cluster* **USD 12.2 million**

ETC Cluster* **USD 5.8 million**



Highlights

- UNHCR is particularly concerned as forced returns from Cameroon to Nigeria have continued unabated after the governments of Nigeria and Cameroon signed a tripartite agreement with UNHCR on 2 March to facilitate the voluntary repatriation of Nigerian refugees when conditions are conducive. Humanitarian partners in Nigeria are gearing up for the possible return of around 75,000 Nigerian refugees from Cameroon.
- WFP is prioritizing its assistance to optimize the funding for its emergency operation and to ensure the most vulnerable people continue to receive support. Additional measures will be taken if no new contributions are confirmed and if timely funding is not made available.

Situation Update

- Boko Haram's attacks and military operations against the group continue to limit humanitarian access in parts of the Lake Chad Basin. While military operations progress in Northeast Nigeria, May has seen a resumption of Boko Haram activities in Chad, increased attacks by the group in Cameroon and sustained levels of activities in Niger and Nigeria.
- Despite sustained donor engagement, to date, only 17 percent of the USD 1.5 billion requested in the 2017 Humanitarian Response Plan for the Lake Chad Basin have been received. To respond to the full scope of the crisis, reach people in need of life-saving assistance and rebuild livelihoods, further operational scale-up and adequate and timely financial resources are urgently required.
- There are concerns that the food security situation will significantly deteriorate if the adequate level of assistance is not provided. In Nigeria, due to funding constraints and the need to ensure the most vulnerable continue to receive food assistance, WFP developed a nuanced prioritization plan which included, inter alia, shifting from status based to needs based targeting of food assistance. In Cameroon, lack of funding has forced WFP to reduce food assistance by 25 percent to nearly 200,000 Nigerian refugees and internally displaced persons (IDPs) in Cameroon's Far North since January. In Niger, WFP was forced to review its operational planning and targeting due to lack of funds.
- Despite the signing of a Tripartite Agreement on 2 March 2017 between UNHCR and the two governments on the voluntary repatriation of Nigerian refugees living in Cameroon, cases of refoulement continue to be reported. Nevertheless, according to UNHCR, waves of spontaneous returns of Nigerian refugees by their own means have also been witnessed in April and May. Humanitarian partners in Nigeria are preparing contingency plans for the possible return of around 75,000 Nigerian refugees. The influx of persons to Banki, Pulka and surrounding areas in Borno could increase associated security risks at accommodation

¹ 2017 Humanitarian needs and requirement overview.

² Total approved for 2017 is USD 522 million + USD 62.5 million through a budget revision (for Nigeria only) which has not been approved yet.

** Funding requirements by cluster

³ May-October 2017

structures and overwhelm the current response capacity of relief actors, leading to reliance on severe coping mechanisms.

WFP Response

- In May, WFP planned to reach an increased target of 2.3 million people across the four countries covered by the regional EMOP.
- In **Nigeria**, WFP has increased its footprint through 18 partnerships with national and international humanitarian organizations. During the month of May WFP, both directly and through partnerships, provided food assistance to nearly 1.2 million people (89 percent of the plan) in Borno, Yobe and Adamawa States. This marks the sixth consecutive month that WFP provided assistance to over 1 million people in Northeast Nigeria.
- In **Cameroon**, WFP provided critical food support to some 190,000 IDPs and Nigerian refugees in Cameroon's Far North region, including 38,000 IDPs who benefitted from cash-based assistance. In collaboration with local NGOs, WFP launched Food Assistance for Assets (FFA) projects in May to support livelihood rehabilitation of communities facing the compounding effects of the Boko Haram crisis, recurrent climate shocks and food production deficits.
- The May mVAM newsletter (http://vam.wfp.org/sites/mvam_monitoring/niger_da_taviz.html) for Diffa region in **Niger** highlighted that the proportion of households with insufficient food or money to buy food decreased slightly from February to April 2017, but the use of negative coping mechanisms increased slightly due to the beginning of the lean season period, when households that have exhausted their food reserves tend to use strategies to survive. The overall proportion of households with a weak dietary diversity score increased from February to April 2017, which can also be attributed to depleted food stocks.



Food and Nutrition Assistance

- Overall, in May, WFP assisted 1,049,006 people (89 percent of the plan) through general food distributions, 164,403 (70 percent of the plan) with cash transfers, and 233,378 children aged 6-23 months and pregnant and nursing women (83 percent of the plan) with specialised nutritious foods in **Nigeria**. A total of 17,200 mt of mixed commodities was dispatched (86 percent of the plan) and USD 2.6 million was disbursed (70 percent of the plan).
- WFP **Chad** continues to provide cash- or food-based assistance coupled with prevention of malnutrition to 130,000 IDPs and 8,500 refugees while planning a scale up to reach 46,000 people among the most vulnerable members of host communities during the lean season and 19,000 people who have recently returned to remote islands and whose livelihoods have been lost.
- In **Cameroon**, WFP, in collaboration with the Government and UNICEF, is working with nutrition stakeholders to strengthen the fight against all forms of malnutrition in northern Cameroon. In addition to providing fortified nutritious foods to over 100,000 young children on a monthly basis, WFP works with government health staff and other partners to ensure complementary services are provided to the same vulnerable families, including immunization, community management of childhood diseases and WASH.
- In **Niger**, preparations for the lean season response are ongoing. During this period, WFP will maintain the same level of response and provide food, nutritional supplements and cash assistance to nearly 200,000 people. WFP assistance during the lean season, from

June to September, will be unconditional. Conditional activities (creation of productive assets) will be stopped during this period.



Supply Chain

- The recently established logistics hub in Kano (Nigeria) has been receiving food as of 31 March. The hub will provide an aggregation point for the regional pre-positioning of goods over the lean season and allow WFP to better access locally or regionally procured commodities, ultimately reducing lead time.

Clusters and Common Services



Food Security Cluster

- To better prepare for the lean season the Food Security Sector in **Nigeria** has developed a response plan, to coordinate partners' plan during this period and to identify the gaps and prioritize interventions to the most vulnerable people. A standardization committee has been created to harmonize food baskets, cash transfer values and targeting approaches.
- In **Niger**, following the update of the *Cadre Harmonisé*, a revision of the people targeted for assistance is being carried out by the Food Security Cluster. Almost 100 percent of the assistance is being provided by humanitarian actors until June (WFP, ACF, ICS and ICRC).



Logistics Cluster

- Based on the expected impacts of the coming rains, (flooding which makes some of the key access roads impassable), the Logistics Sector in **Nigeria** has drafted a contingency plan which focuses on a prepositioning strategy and access options. As part of the plan, an inter-agency assessment mission was conducted in Rann, KalaBalgé LGA (one of the locations expected to be cut off during the seasonal rains), to decide on the establishment of two Mobile Storage Units (MSUs) and the potential construction of a concrete landing pad for helicopters.



Emergency Telecommunications Cluster

- The **Emergency Telecommunications Sector** in **Nigeria** successfully completed the deployment of internet connectivity and security telecommunications services in the recently established humanitarian hub in Ngala, Borno State.
- A 35m radio tower was deployed at the International Humanitarian Partnership (IHP) base camp in Maiduguri to improve the overall coverage of the security telecommunications network.



UN Humanitarian Air Service

- The WFP-managed UN Humanitarian Air Service (UNHAS) flies a fixed-wing aircraft and three helicopters in **Nigeria**, enabling 63 humanitarian organizations to reach thousands of people in hard-to-access and isolated areas in Northeast Nigeria.
- UNHAS **Chad** continues to provide flights from N'Djamena to the Lake region (Bol) three times a week. The humanitarian community has requested the addition of a connection to Baga Sol. However, adding this connection – which will facilitate access in the northern part of the Lake region – first necessitates the rehabilitation of an airstrip at a cost of USD 1 million.
- UNHAS continues to provide air transport services to the humanitarian community in all five regions of **Niger**. A total of 1,615 passengers and 3,567 mt of cargo were transported in May.

WFP Operation

	2017 Total Requirements (in USD)	Total Received (in USD)	6-Month Net Funding Requirements (May-October) (in USD)	People Assisted** (May 2017)	Female	Male
EMOP 200777 TOTAL (until December 2017)	584.5 million	161.5 million	251.7 million	2.3 million	n/a	n/a

** Figures are estimates and will be updated as country offices receive cooperating partners' reports.



Contacts

WFP Regional Bureau, Dakar, Senegal: +221 33 859 65 00

Margot van der Velden, Deputy Regional Director

Hae-Won Park, Regional IM and Reports Officer

Elizabeth Bryant, Regional Communications Officer