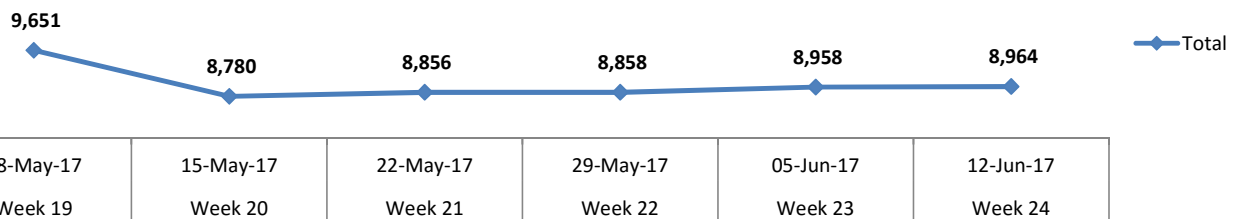


INTRODUCTION

The Site Tracker is a gap analysis tool developed to identify gaps in service delivery and assistance in IDP camps. This tool only covers camps where IOM CCCM Site Facilitators are deployed to support in camp management with partners soon to take over some areas. It enables stakeholders track each other's weekly activities and minimize duplication of efforts, in support of intra-sector coordination, to improve communication and to strengthen the quality of services delivered to IDPs. The DTM Site Tracker contributes to speed up the time of response by concerned partners when their intervention is needed and avoid unnecessary delays. This report must not be misconstrued to represent the situation of all the IDP camps in North-Eastern Nigeria.

17 Sites in GIREI, YOLA SOUTH, YOLA NORTH and FUFURE LGAs in Adamawa State in review this week: AD_S032,SEGERE DUTSE, AD_S037,CHEKAMIDERI, AD_S005,EYN CHURCH VINIKILANG, AD_S034,NANA VILLA, AD_S003,MALKOHI CAMP, AD_S008,ST THERESAS CATHEDRAL, AD_S031,WURO AHI, AD_S027,DOKKITILLA WUROCHEKKE, AD_S028,HULLERE, AD_S029,SABON DEAL NGUORORE, AD_S030,KILBAJE EXTENSION, AD_S004,MALKOHI VILLAGE, AD_S019,FUFURE CAMP, AD_S006,DAWARE CAMP, AD_S036,UNGWAN ABUJA, AD_S035,WADAI, AD_S038,LOWCOST QUARTERS.

Trend of the Number of IDP's per week



KEY FINDINGS

A source of water has remained the priority for most sites. A lot of sites do not have a health facility.



8,964 Total number of IDP's residing in assessed sites for the week in review

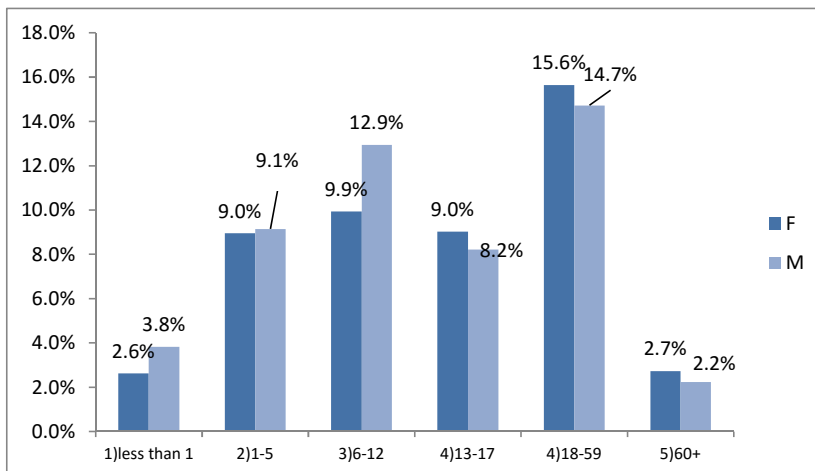


24% non-functional latrines
11% non-functional bathrooms
7% non-functional water points

Week in review (12 to 18 June 2017 (Week 24))



Summary on population demographic								Number of Individuals
Number of Households	Breakdown	Infants	Children	Pre-Teens	Teens	Adults	Elderly	
	Gender/age	Less than 1	(1-5)	(6-12)	(13-17)	(18-59)	(60+)	8,964
2,136	Male	343	820	1160	737	1320	200	
	Female	235	803	891	809	1402	244	
	Total	578	1623	2051	1546	2722	444	



Graph 1: Age group and sex breakdown

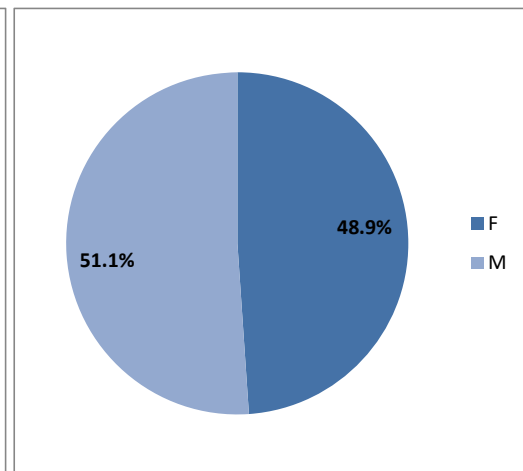


Chart 1: Gender distribution



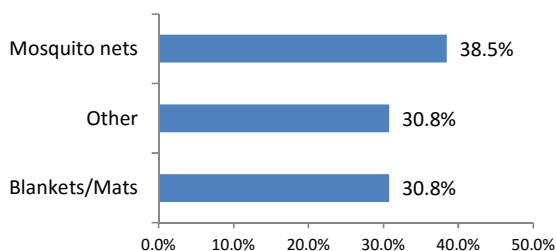
EMERGENCY SHELTER & NFI

Summary of activities carried out and gaps seen:

SSID	SiteName	Comments on Shelter/NFI section
AD_S036	UNGWAN ABUJA	23HH are in need of fertilizer for farming. They also need of soap, mats, blankets and kitchen sets
AD_S037	CHEKAMIDERI	58HH need blankets and mosquito nets
AD_S005	EYN CHURCH VINIKILANG	24HH need blankets and mosquito nets.
AD_S038	LOWCOST QUARTERS	14HH are in need of NFI set

Activities for the week under review					
SSID	SiteName	Sub-Category	Description	QTTY	Provider
AD_S019	FUFORE CAMP	NFI	Blankets/Mats		NEMA
AD_S006	DAWARE CAMP	Shelter	Tent	232	IOM

Most needed NFIs (% of sites)



Graph 2: Needed NFIs

% IDP's living outside of shelter

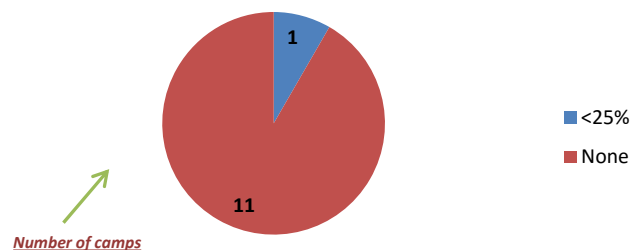


Chart 2: IDPs living outside of shelter



WASH

Summary of activities carried out during week in review:

SSID	SiteName	Comments on WASH section
AD_S037	CHEKAMIDERI	A source of water is needed on site
AD_S032	SEGERE DUTSE	Latrines and source of water is needed
AD_S005	EYN CHURCH VINIKILANG	There are still needs for latrines and source of drinking water onsite.
AD_S003	MALKOHI CAMP	22 latrines need to be dislodged.
AD_S034	NANA VILLA	Latrines are needed on site
AD_S004	MALKOHI VILLAGE	A borehole needs to be repaired.
AD_S008	ST THERESAS CATHEDRAL	More water storage facilities are needed on site.
AD_S027	DOKKITILLA WUROCHEKKE	There is no water source on site.
AD_S028	HULLERE	There is no water source on site.
AD_S029	SABON DEAL NGURORE	Additional water source is needed on site.
AD_S006	DAWARE CAMP	One borehole needs to be repaired.
AD_S038	LOWCOST QUARTERS	There is need for water point on site.

Gaps identified on sites

# of functional latrines	262	76.4%
# of non-functional latrines	81	23.6%
Total	343	100.0%

# of functional bathrooms	214	89.2%
# of non-functional bathrooms	26	10.8%
Total	240	100.0%

# of functional water points	25	92.6%
# of non-functional water points	2	7.4%
Total	27	100.0%

Common means of disposal	%
Very clean	0.0%
Clean	29.4%
Not so	41.2%
Dirty	23.5%
Very dirty	5.9%

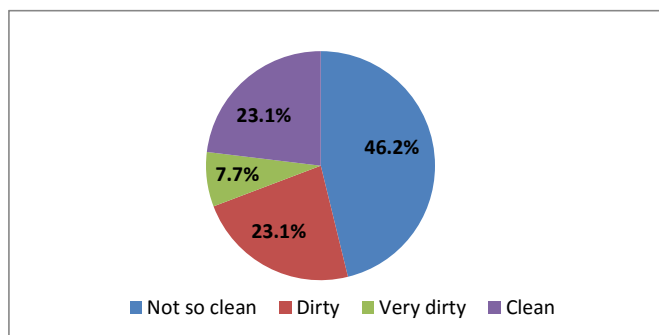


Chart 3: Frequency of evacuation of toilets



Summary of activities carried out and gaps seen:

SSID	SiteName	Comments on Protection section			
Activities for the week under review					
SSID	SiteName	Sub-Category	QTTY	Provider	Remark
AD_S035	WADAI	Focus group meeting	1	IOM	good
AD_S035	WADAI	Recreational activity for women	1	IOM	good
AD_S031	WURO AHI	Focus group meeting	1	IOM	good
AD_S031	WURO AHI	Recreational activity for children	1	IOM	good
AD_S031	WURO AHI	Recreational activity for women	1	IOM	good
AD_S019	FUFORE CAMP	Focus group meeting	1	IOM	good
AD_S019	FUFORE CAMP	Recreational activity for children	1	IOM	good
AD_S019	FUFORE CAMP	Recreational activity for women	1	IOM	good
AD_S019	FUFORE CAMP	Vocational training		UNFPA	good
AD_S003	MALKOHI CAMP	Recreational activity for children	1	IOM	
AD_S003	MALKOHI CAMP	Counselling	1	IOM	
AD_S003	MALKOHI CAMP	PSS	1	IOM	
AD_S004	MALKOHI VILLAGE	PSS	1	IOM	
AD_S006	DAWARE CAMP	Focus group meeting		IOM	
AD_S006	DAWARE CAMP	Recreational activity for women		IOM	

Security presence (% of sites)

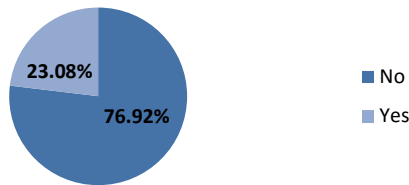
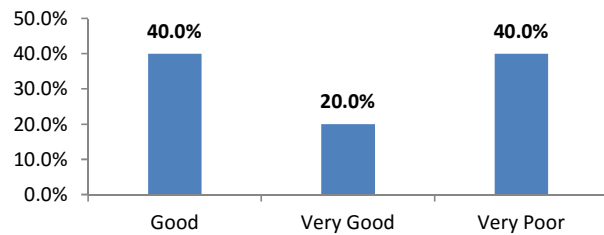


Chart 4: Security presence on sites

IDP's relationship with security



Graph 3: Security incidents reported on sites

Unaccompanied/Separated Children							
Total		Unaccompanied Children		Separated Children		Unaccompanied Children In Foster	
		Male	Female	Male	Female	Male	Female
#	81	36	42	2	1	-	-
%	100%	44.4%	51.9%	2.5%	1.2%	0.0%	0.0%

*The current CCCM monitoring does not enable to track registration status of a UASC by a Child Protection organization and subsequent monitoring.



Summary of activities carried out and gaps seen:

SSID	SiteName	Comments on Education section
AD_S035	WADAI	School is needed on site for the IDPs
AD_S019	FUFORE CAMP	They need more teachers on site
AD_S036	UNGWAN ABUJA	They need education materials, school uniforms, bags and note books and sandals.
AD_S005	EYN CHURCH VINIKILANG	Sandals, school bags and uniforms are needed.
AD_S003	MALKOHI CAMP	children at site need more educational facilities.
AD_S034	NANA VILLA	There is need for educational assistance - educational facilities and items.
AD_S004	MALKOHI VILLAGE	They don't have access to school on site.
AD_S028	HULLERE	Children on site dont have access to education.
AD_S006	DAWARE CAMP	Classrooms are partially damaged and need to be repaired. Pupils attending school need uniforms, bags and sandals.
AD_S038	LOWCOST QUARTERS	School bags and sandals are needed on site.

Number of camps

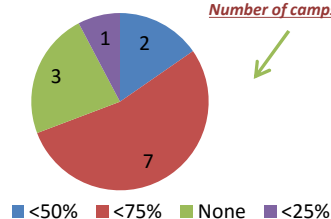


Chart 5: % children attending schools at sites

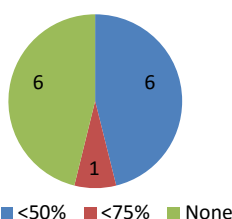


Chart 6: % availability of instructional material

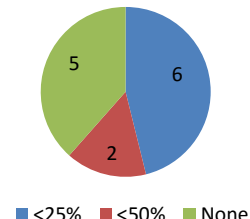


Chart 7: % children with access to facilities



HEALTH, FOOD & NUTRITION

Summary of activities carried out and gaps seen:

SSID	SiteName	Comments on Health, Food & Nutrition section
AD_S035	WADAI	They need to have free access to medical health care service for the IDPs on site
AD_S031	WURO AHI	They need to have free access to medical health care and also provide them with supplementary feeding for pregnant women and lactating mothers on site.
AD_S019	FUFORE CAMP	They need more drugs and supplements on site
AD_S036	UNGWAN ABUJA	They need food items and free access to medical health care.
AD_S037	CHEKAMIDERI	There is needs for other health services aside distribution of drugs. Also, there is need for food items and food supplements.
AD_S032	SEGERE DUTSE	Food items and food supplements remains the main needs of the IDPs in this site. Also, they need access to health services.
AD_S005	EYN CHURCH VINIKILANG	Main needs in terms health still remained as stated in the previous reports - food items, food supplements and health services.
AD_S034	NANA VILLA	Food items, food supplements and health services are the most needed gaps onsite in terms of health.
AD_S006	DAWARE CAMP	There is need for cough and anti malaria drugs. Supplementary feeding for pregnant women and lactating mothers is also needed.
AD_S038	LOWCOST QUARTERS	There is need for supplementary feeding for pregnant womwn and lactating mothers.

Activities for the week under review						
SSID	SiteName	Sub-Category	Description	QTTY	Provider	Remark
AD_S019	FUFORE CAMP	Nutrition	Supplementary feeding for lactating women		NEMA	good
AD_S037	CHEKAMIDERI	Health	Drugs	1	UNICEF	

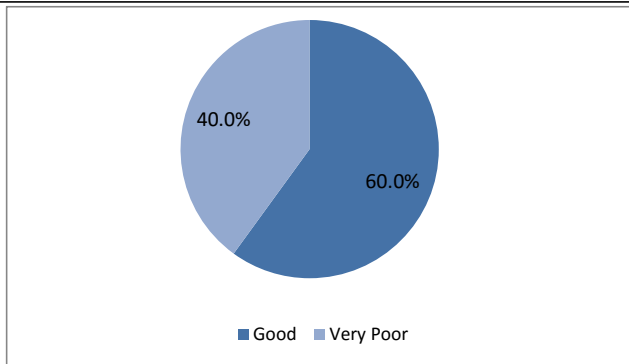


Chart 8: Quality of healthcare delivery in sites

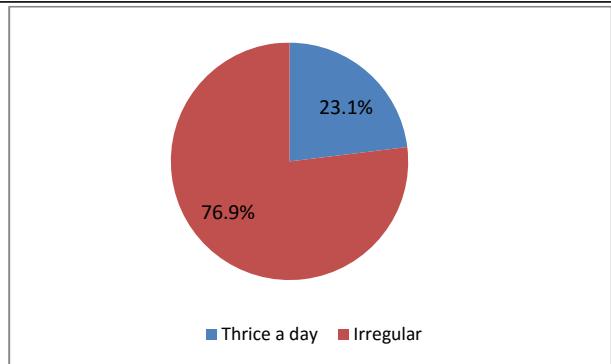


Chart 9: Average number of meals per day in sites

For more information:

CONTACTS

mmugogo@iom.int 08121565300 | fdiab@iom.int 09075070001

