

# Lumley, Freetown area - SIERRA LEONE

## Mudflow - Situation as of 15/08/2017

### Grading Map

#### Cartographic Information

1:6500 Full color ISO A1, low resolution (100 dpi)

0 0,125 0,25 0,5 km

Grid: WGS 1984 UTM Zone 28N map coordinate system  
Tick marks: WGS 84 geographical coordinate system



#### Legend

##### Crisis Information

Mudflow (15/08/2017 11:25 UTC)

##### Building Grading

- Destroyed
- Highly Damaged
- Moderately Damaged

##### Transportation Grading

- Bridge, Destroyed
- Road, Destroyed

##### General Information

Area of Interest

Clouds

Settlements

Populated Place

##### Hydrology

- River
- Stream
- Lake

##### Physiography

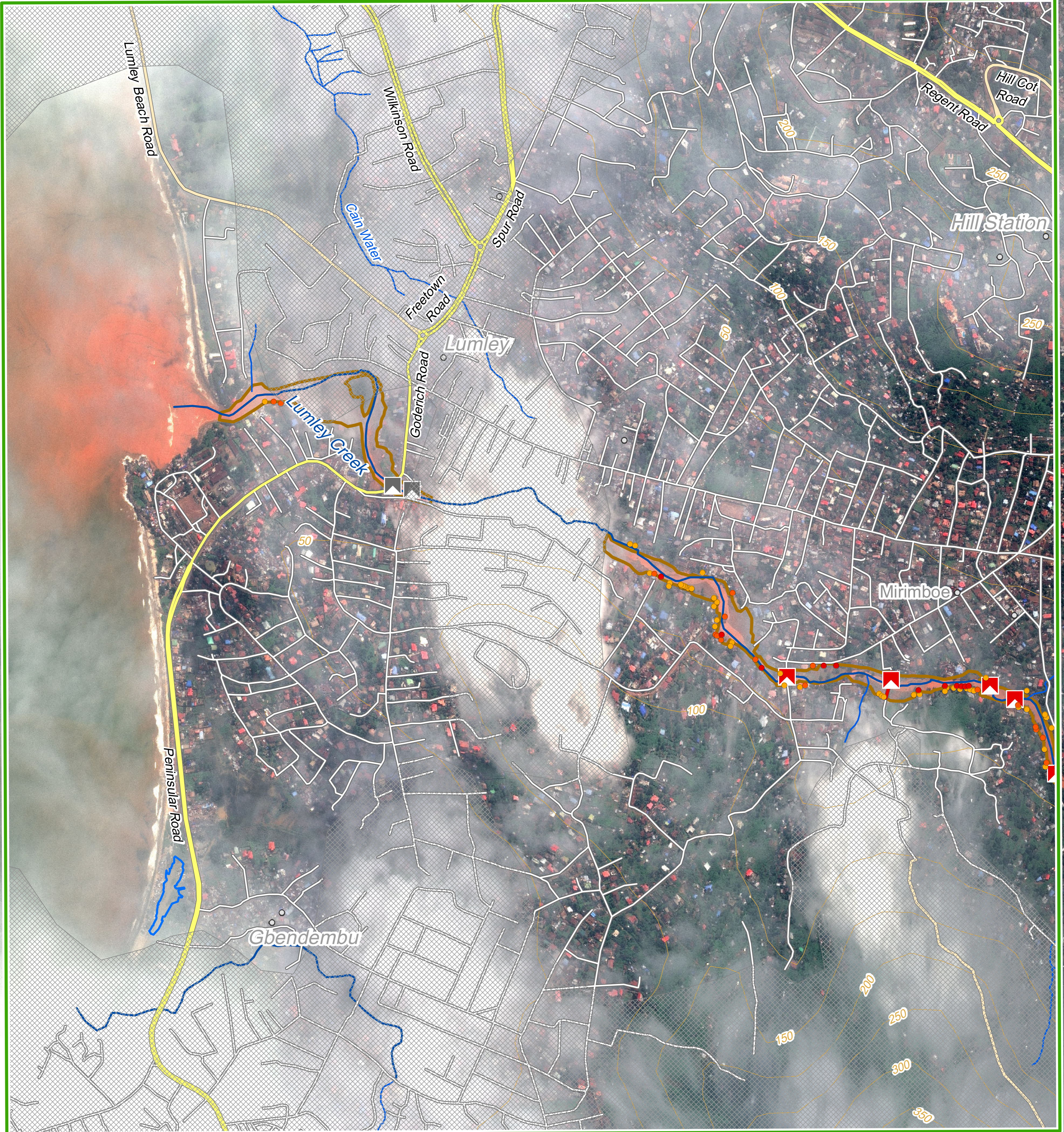
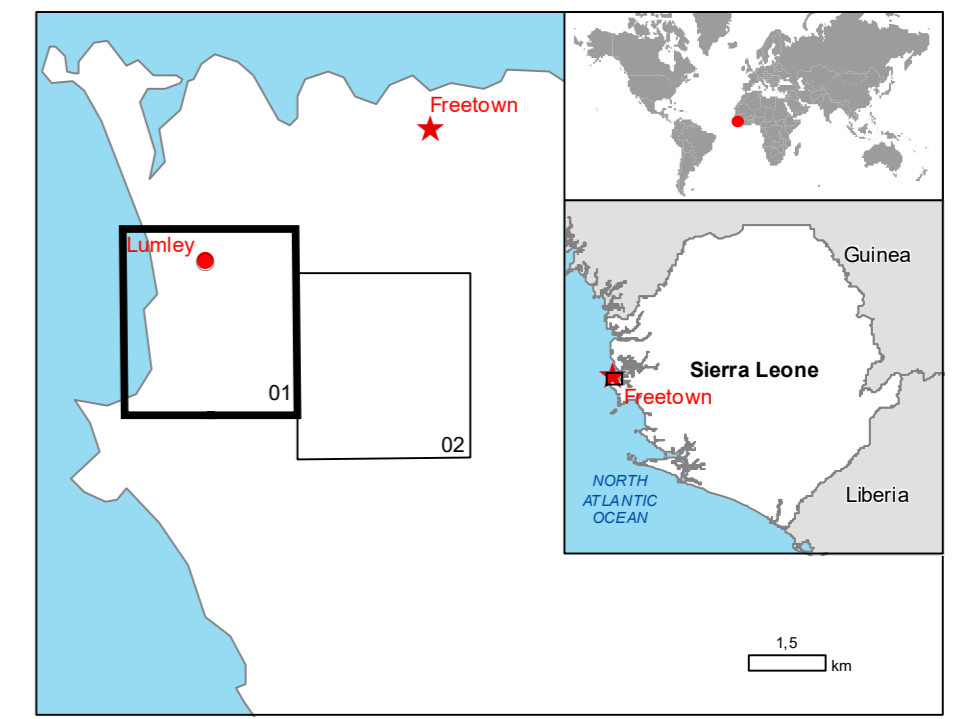
Contour lines and elevation (m)

##### Transportation

- Bridge
- Primary Road
- Secondary Road
- Local Road

#### Consequences within the AOI

|                      | Unit of measurement | Destroyed | Highly damaged | Moderately damaged | Negligible to slight damage | Total affected | Total in AOI |
|----------------------|---------------------|-----------|----------------|--------------------|-----------------------------|----------------|--------------|
| Mudflow              | ha                  |           |                |                    |                             | 18.9           |              |
| Landslide            | ha/No.              |           |                |                    |                             | 0.0            |              |
| Estimated population | No. of inhabitants  |           |                |                    |                             | 722            | 97446        |
| Settlements          | Residential         | No. 13    | 17             | 45                 | 0                           | 75             | N/A          |
| Transportation       | Bridge              | No. 5     | 0              | 0                  | 0                           | 5              | 7            |
|                      | Primary roads       | km 0.0    | 0.0            | 0.0                | 0.0                         | 0.0            | 11.4         |
|                      | Secondary roads     | km 0.0    | 0.0            | 0.0                | 0.0                         | 0.0            | 3.0          |
|                      | Local roads         | km 0.1    | 0.0            | 0.0                | 0.0                         | 0.1            | 93.7         |



#### Map Information

On the 14th of August 2017, massive mudslides and floods have affected Freetown in Sierra Leone, the worst-hit area is thought to be the Regent district where dozens of houses were submerged when the hillside collapsed.

In Freetown, more than 300 people have been killed after houses are submerged by mudflows and rivers, the precise death toll is likely to rise within the next days. An estimated 2,000 people have also been made homeless after heavy rains caused properties to disappear under water. Heavy rains on 15-16 Aug might lead to further severe flooding.

The present map shows the damage grade assessment in the area of Lumley (Sierra Leone). The thematic layer has been derived from post-event satellite image by means of visual interpretation. The estimated geometric accuracy is 5 m CE90 or better, from native positional accuracy of the background satellite image.

#### Data Sources

Present image: WorldView-3 © Digital Globe, Inc. (2017), (acquired on 03/03/2017 at 11:41 UTC, GSD 0.5 m, approx. 0% cloud coverage in AoI, 16° off-nadir angle), provided under COPERNICUS by the European Union, ESA and European Space Imaging, all rights reserved.

Post-event image: GeoEye © Digital Globe, Inc. (2017), (acquired on 15/08/2017 at 11:25 UTC, GSD 0.5m, approx. 50% cloud coverage in AoI, 42° off-nadir angle), provided under COPERNICUS by the European Union, ESA and European Space Imaging, all rights reserved.

Base vector layers: OpenStreetMap © OpenStreetMap contributors, Wikimapia.org, GeoNames 2015, refined by the producer.

Inset maps: JRC 2013, Natural Earth 2012, GeoNames 2013.

Population data: Landsat 2010 © UT BATTLE, LLC  
Digital Elevation Model: SRTM 90m (NASA/USGS)

#### Disclaimer

Products elaborated in this Copernicus EMS Rapid Mapping activity are realized to the best of our ability, within a very short time frame, optimising the available data and information. All geographic information has limitations due to scale, resolution, date and interpretation of the original sources. The map and the information content are derived from satellite data without in situ validation. No liability concerning the contents or the use thereof is assumed by the producer and by the European Union. Map produced by SIRS released SERTIT (ODO).

For the latest version of this map and related products visit <http://emergency.copernicus.eu/EMSR222>

[je-ems-rapidmapping@ec.europa.eu](mailto:je-ems-rapidmapping@ec.europa.eu)  
© European Union

For full Copyright notice visit <http://emergency.copernicus.eu/mapping/ems/cite-copernicus-ems-mapping-portal>

#### Relevant date records

| Event      | 14/08/2017 | Situation as of | 15/08/2017 |
|------------|------------|-----------------|------------|
| Activation | 15/08/2017 | Map production  | 17/08/2017 |