



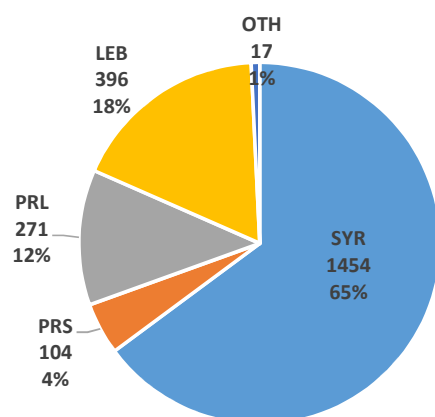
**OUTCOME 5: Boys & girls at risk and survivors of violence, exploitation and abuse have access to an improved and equitable prevention & response**

**Output 5.2: Displaced and host community boys & girls at risk or survivors of violence have access to an integrated package of quality prevention and response services**

Funding agencies: UNICEF, UNHCR, OCHA, independent sources.

Information management: Vicken Ashkarian, vashkarian@unicef.org

**Indicator 5.2.2: # of boys & girls accessing CP & focused PSS**

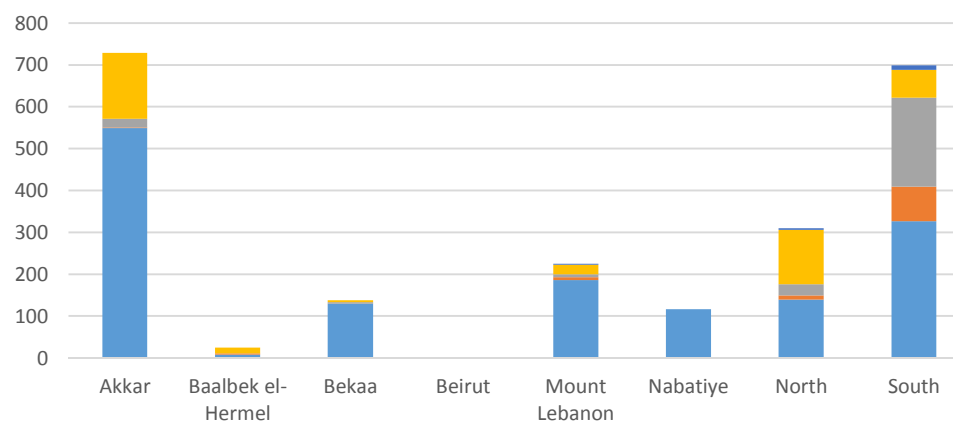


Male	Female
52%	48%

Activities per age groups		
0 - 5	6 - 11	12 - 17
6	530	834

Disaggregations			
Cohorts	Sex	Age *	Risk type
2242	2219	1370	864

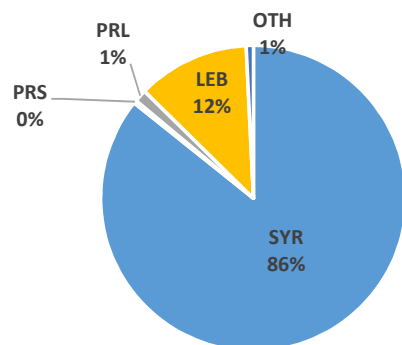
\* Disaggregation by age excludes data from UNICEF Palestinian Program.



Governorates							
Akkar	B/H	Bekaa	Beirut	ML	Nab	Nt	St
729	25	138	0	225	116	310	699

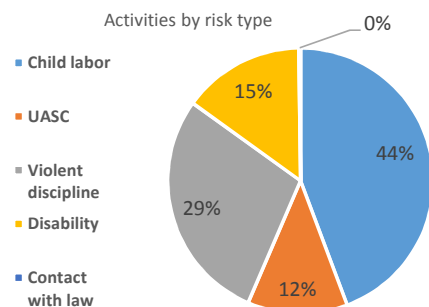
**Partners:** DRC/LRC, DRC, Mouvement Social, TdH - L, Mercy Corps, Intersos, SaJ, WVI, MAP, UNRWA

### Indicator 5.2.3: # of boys & girls assisted through CP case management services

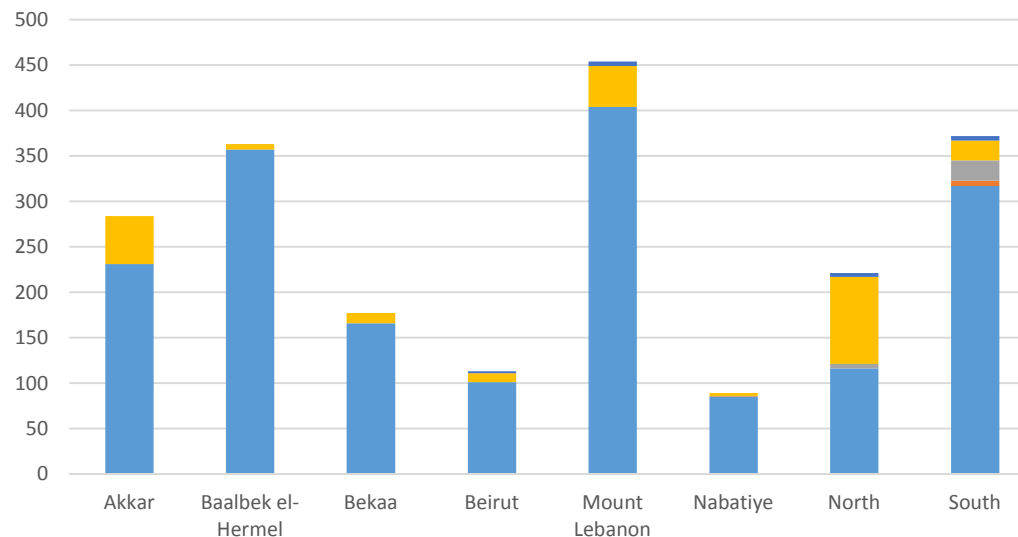


Male	Female
59%	41%

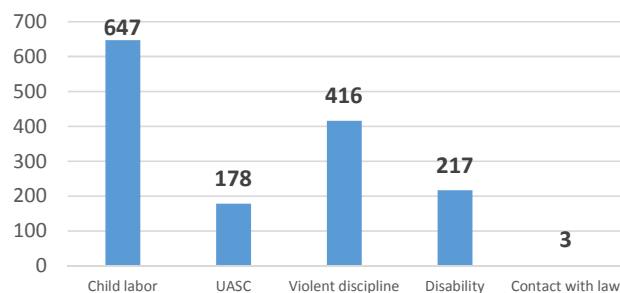
Activities per age groups		
0 - 5	6 - 11	12 - 17
204	621	1245



Disaggregations			
Cohorts	Sex	Age	Risk type
2073	2073	2070	1461

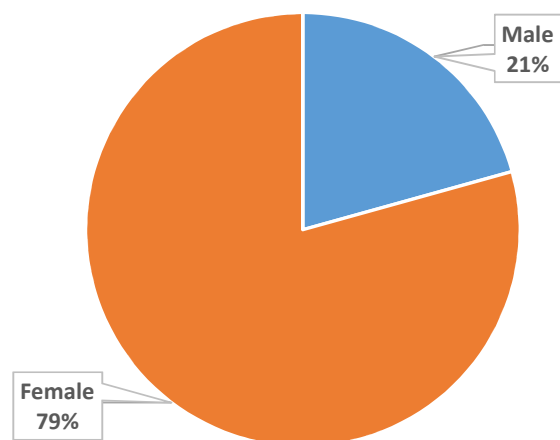


Governorates							
Akkar	B/H	Bekaa	Beirut	ML	Nab	Nt	St
284	363	177	113	454	89	221	372

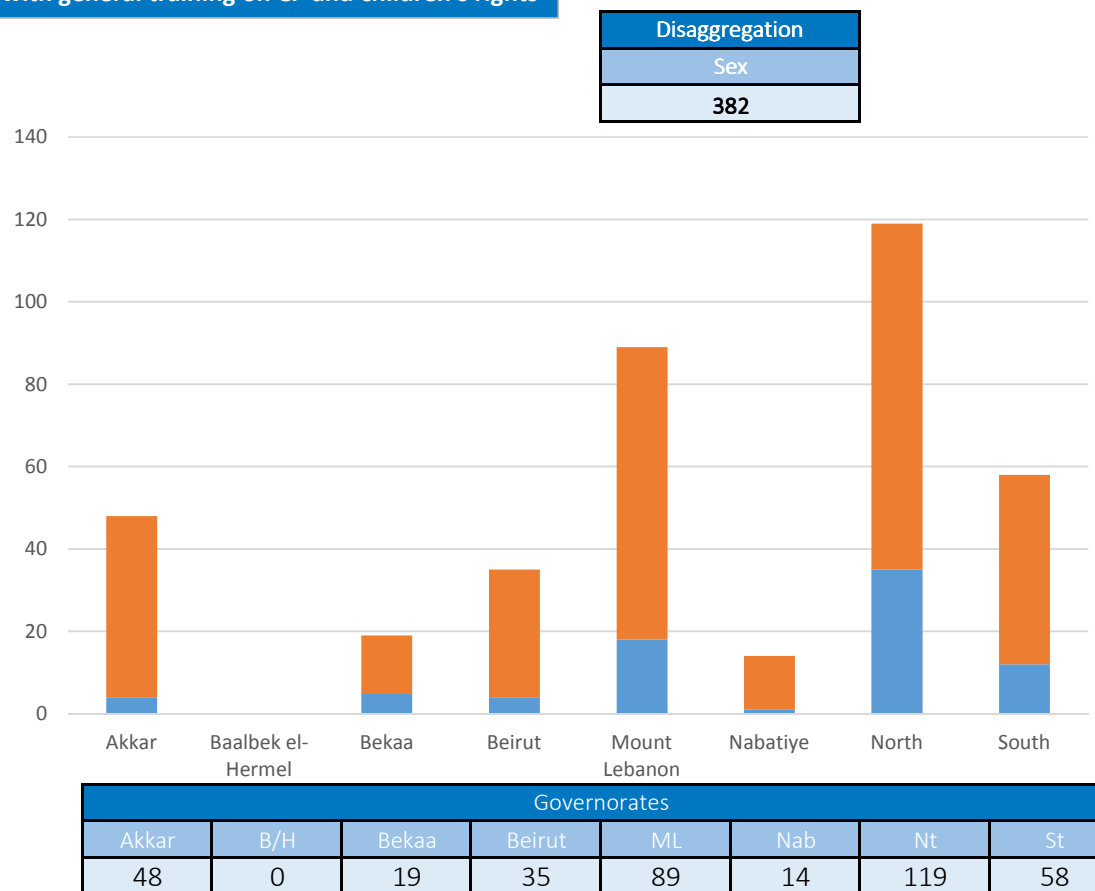


**Partners:** BZRD, DRC, Himaya, Intersos, IRC, Makhzoumi Foundation, Mercy Corps, Mouvement Social, SCI, TdH - It, TdH - L, WCH, YNCA.

**Indicator 5.2.4: # of partners and government staff provided with general training on CP and children's rights**

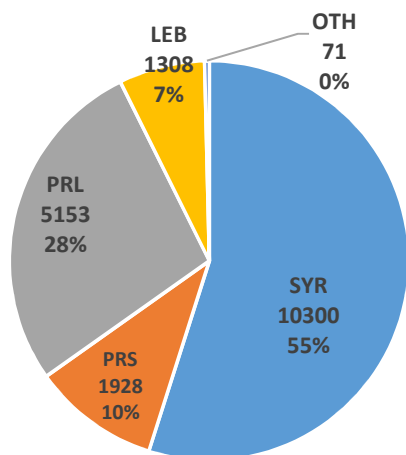


**Partners:** DRC, Intersos, IRC, Mercy Corps, Mouvement Social, RtP, SCI, WCH.



Output 5.3: Vulnerable children, families and communities supported to promote practices that protect them.

Indicator 5.3.2: # of boys & girls accessing CP prevention (for boys & girls: community based PSS)

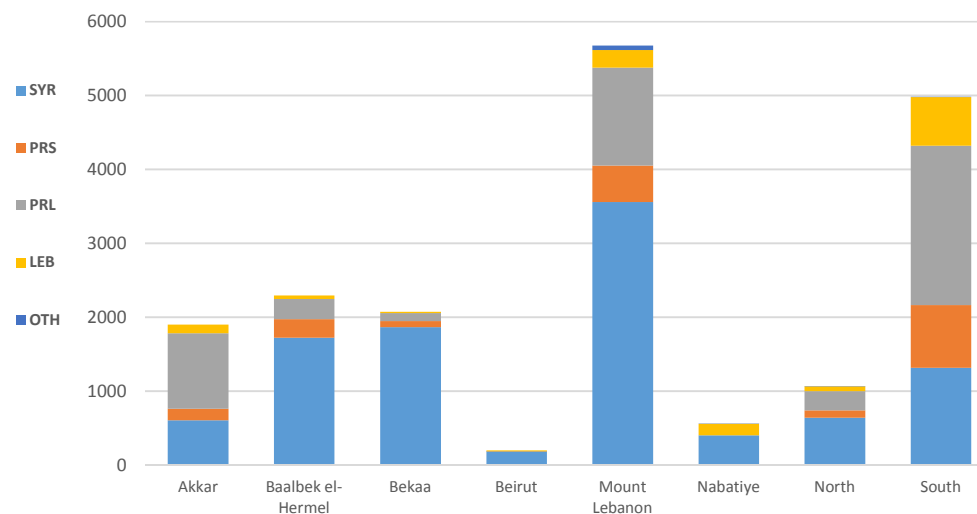


Male	Female
49%	51%

Activities per age groups		
0 - 5	6 - 11	12 - 17
773	6941	2296

Disaggregations		
Cohorts	Sex	Age*
18760	18555	10010

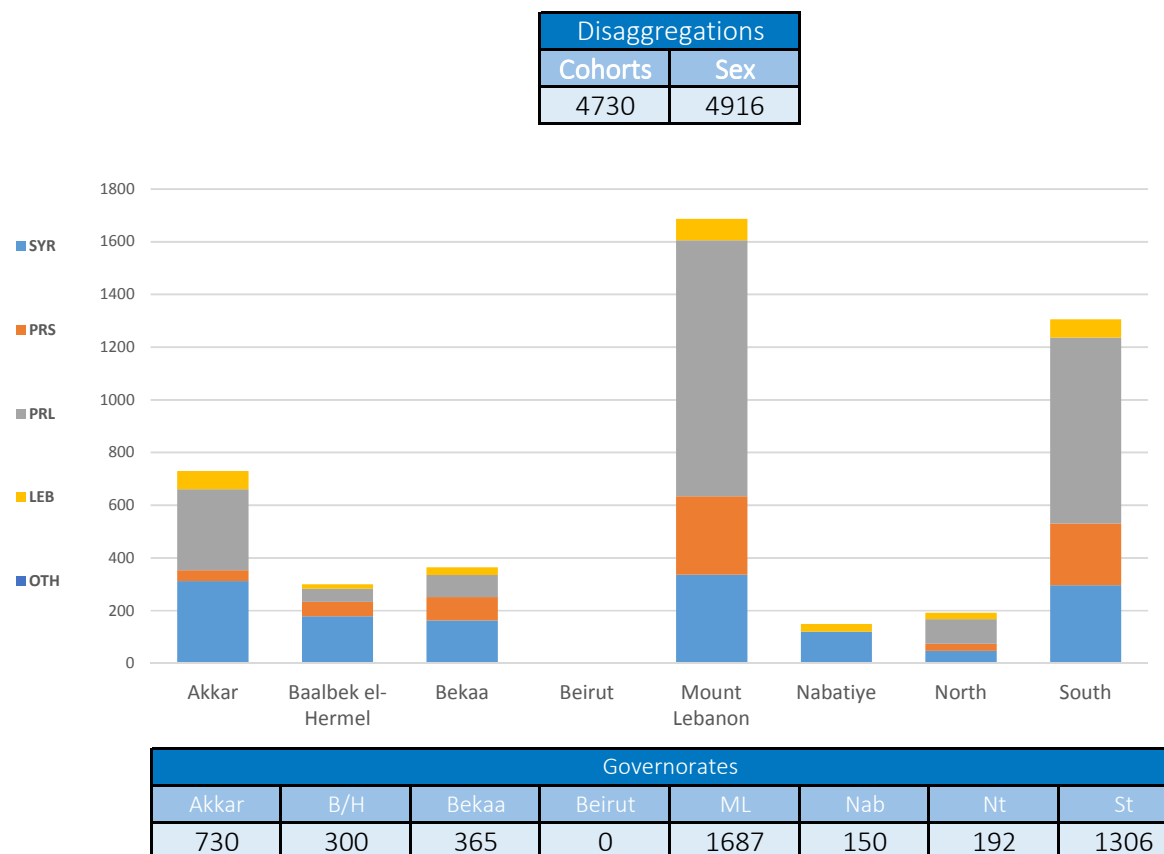
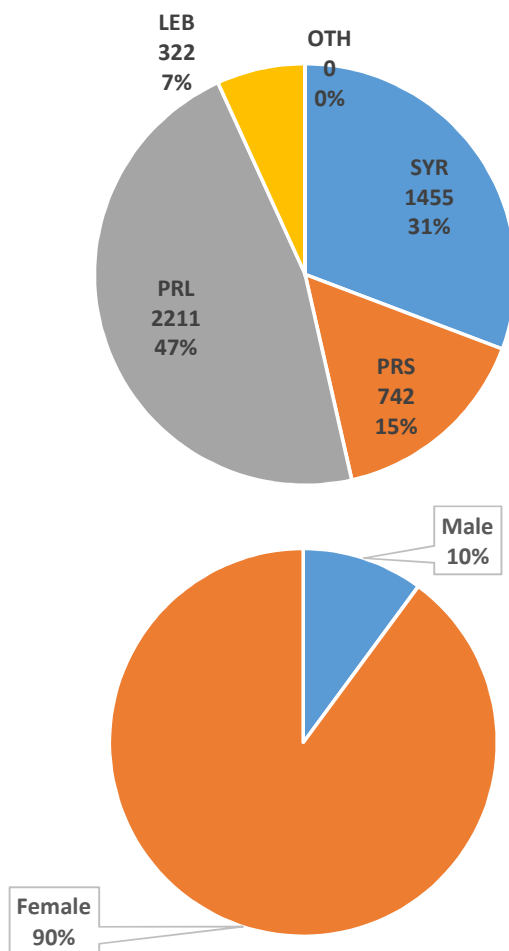
\* Disaggregation by age excludes data from UNICEF Pal. Prog.



Governorates							
Akkar	B/H	Bekaa	Beirut	ML	Nab	Nt	St
1901	2296	2073	197	5678	559	1070	4986

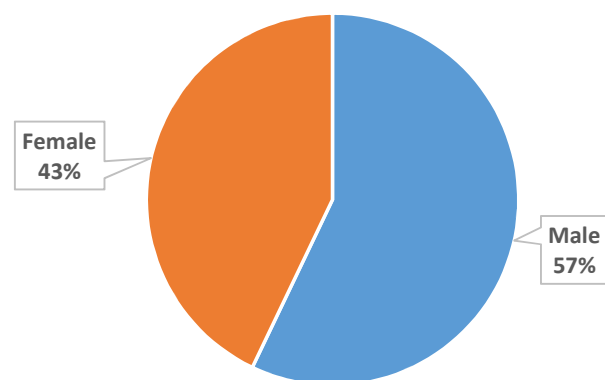
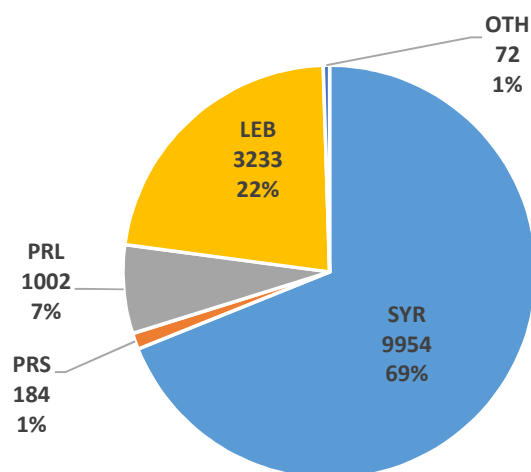
**Partners:** AMEL, ARCPA, Beyond, DRC, DRC/LRC, Intersos, IRC, Makhzoumi Foundation, MAP, Mercy Corps, RtP, SaJ, SCI, SIF, TdH - L, WCH, WVI, YNCA.

Indicator 5.3.3: # of caregivers accessing CP prevention (caregivers' programs)

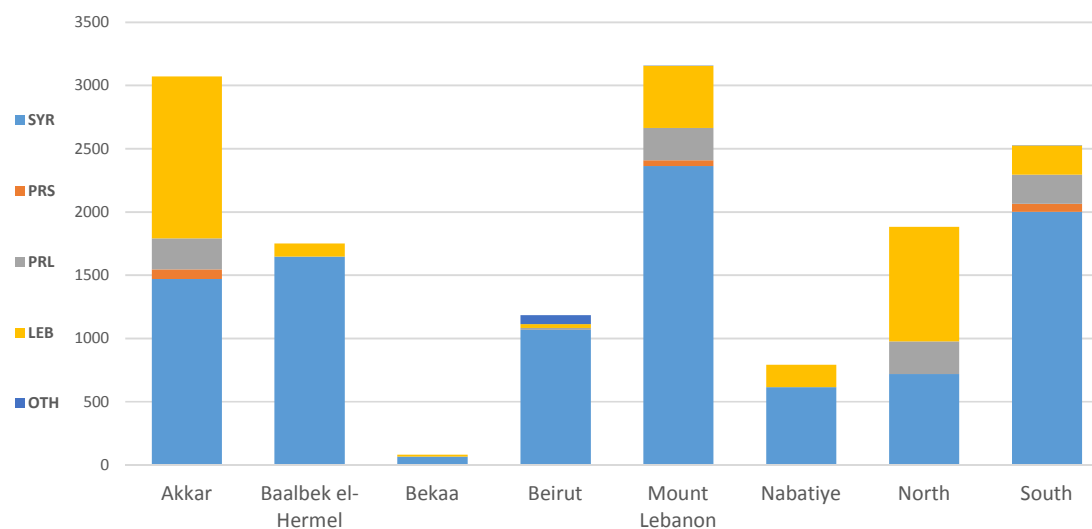


**Partners:** AMEL, ARCPA, BZRD, DRC, DRC/LRC, Intersos, IRC, MAP, Mercy Corps, Mouvement Social, SaJ, SCI, TdH - L, WVI, YNCA.

# Indicator 5.3.4: # of girls & boys reached on key CP issues



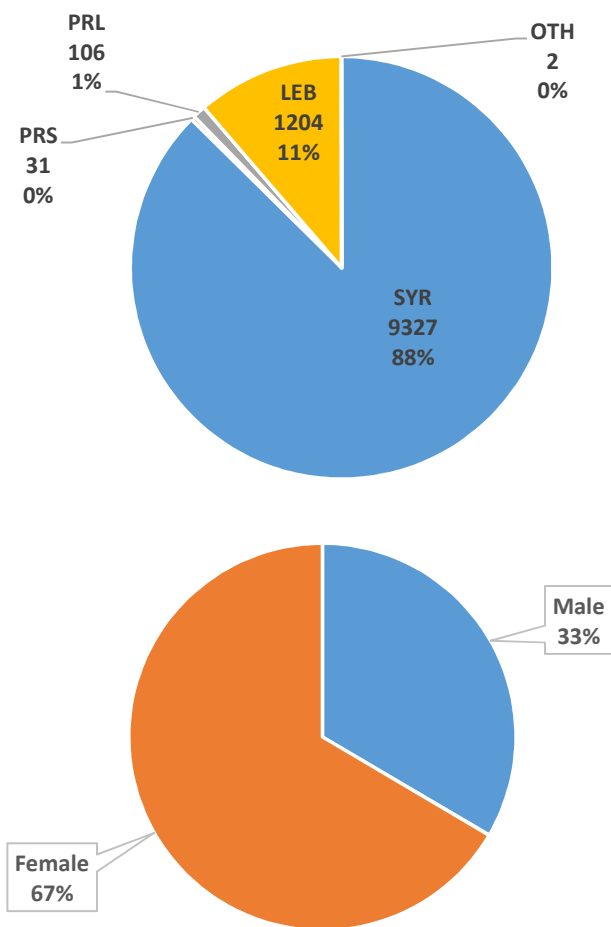
Disaggregations		
Cohorts	Sex	Age
14445	13924	11683



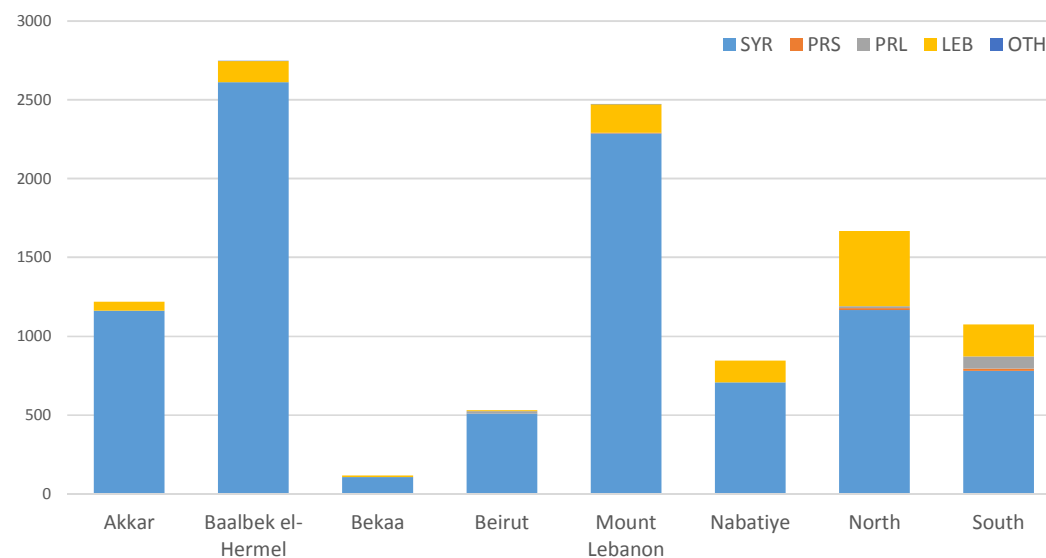
Governorates							
Akkar	B/H	Bekaa	Beirut	ML	Nab	Nt	St
3071	1750	82	1183	3157	793	1882	2527

**Partners:** AMEL, DRC, DRC/LRC, Intersos, Makhzoumi Foundation, Mercy Corps, RtP, SaJ, SIF, TdH - It, TdH - L, WCH, WVI, YNCA.

**Indicator 5.3.5: # of caregivers reached on key CP issues.**



Disaggregations	
Cohorts	Sex
10670	9585



Governorates							
Akkar	B/H	Bekaa	Beirut	ML	Nab	Nt	St
1218	2746	118	530	2473	844	1667	1074

**Partners:** AMEL, BZRD, DRC, DRC/LRC, Intersos, IRC, Mercy Corps, Mouvement Social, Saj, SCI, TdH - L, WVI, YNCA.



**OUTCOME 5: Boys & girls at risk and survivors of violence, exploitation and abuse have access to an improved and equitable prevention & response**

**Child Protection - All activities**  
**Progress to target**

