





CAMP COORDINATION AND CAMP MANAGEMENT

CLUSTER

Sittwe

03 April 2013

General Info about the Cluster

- CCCM Sittwe  Shelter/NFI/CCCM Cluster Yangon
- Membership (CM agencies, service providers, other Cluster Leads/Working Groups, authorities, external observers, OCHA  Agenda, call for specific attendees)
- ToR
- Schedule

CCCM overall mission

CCCM is a priority and cross-cutting global Cluster.

CCCM overall aims:

- Improve living conditions of IDPs during displacement
- Advocate for durable solutions to end camps life and organize closure and phase out
- Secure access to camps and delivery of services
- Ensure assistance to and protection of IDPs in camps in complex environment

CCCM overall mission

The level of response are:

- **Global** – Standards and policy settings, building response capacity in emergencies level-3, operational support
- **Country** – Development and support of national strategies and plans
- **Field/Regional/State** – Coordination of multiple camps
- **Camp/Center** – Management of a single camp/communal center

Three key roles and responsibilities have been agreed upon to ensure effective response at all levels

Key actors of CCCM framework

1. Camp Administration (CA)

- Camp Administration is the role of **Governments and National Authorities** and refers to those functions that relate to overseeing of activities in camp-like situations
- In line with the **obligation and responsibility of a state to provide protection and humanitarian assistance to IDPs**

Key actors of CCCM framework

Camp Administration shall:

- Maintain law and order and the **civilian character** of IDP settlements
- **Prevent any eviction or any further displacement** of IDPs in the camps before they can regain their original homes or are offered other sustainable solutions
- **Facilitate access** to camps by the humanitarians
- Designate/open and close camps, **secure land and occupancy rights** for temporary settlements
- **Issue documentation** (birth certificates, ID cards, travel permits etc.) to its inhabitants

Key actors of CCCM framework

2. Camp Coordination (CC)

- The Camp Coordination Agency is the **designated cluster lead agency for CCCM** (UNHCR in conflict scenarios)
- Coordinates roles and responsibilities for the development and support of national/state plans **relating to the establishment and management of camps**, (incorporating durable solutions and exit strategies)
- Advocates for the **humanitarian space necessary for the effective delivery of protection and assistance** in camps

Key actors of CCCM framework

The Camp Coordinator shall:

- Develop an **overall camp response strategy**
- Provide appropriate support to national authorities including **capacity building** on CCCM related issues
- Identify and **designate camp management agencies**
- Set-up and maintain an **Information Management System** for data at camp and inter-camps levels
- Ensure that **responses are in line with existing policy guidance and technical sector-specific standards**
- Ensure **systematic and meaningful participation** of the displaced communities in all aspects of camps life

Key actors of CCCM framework

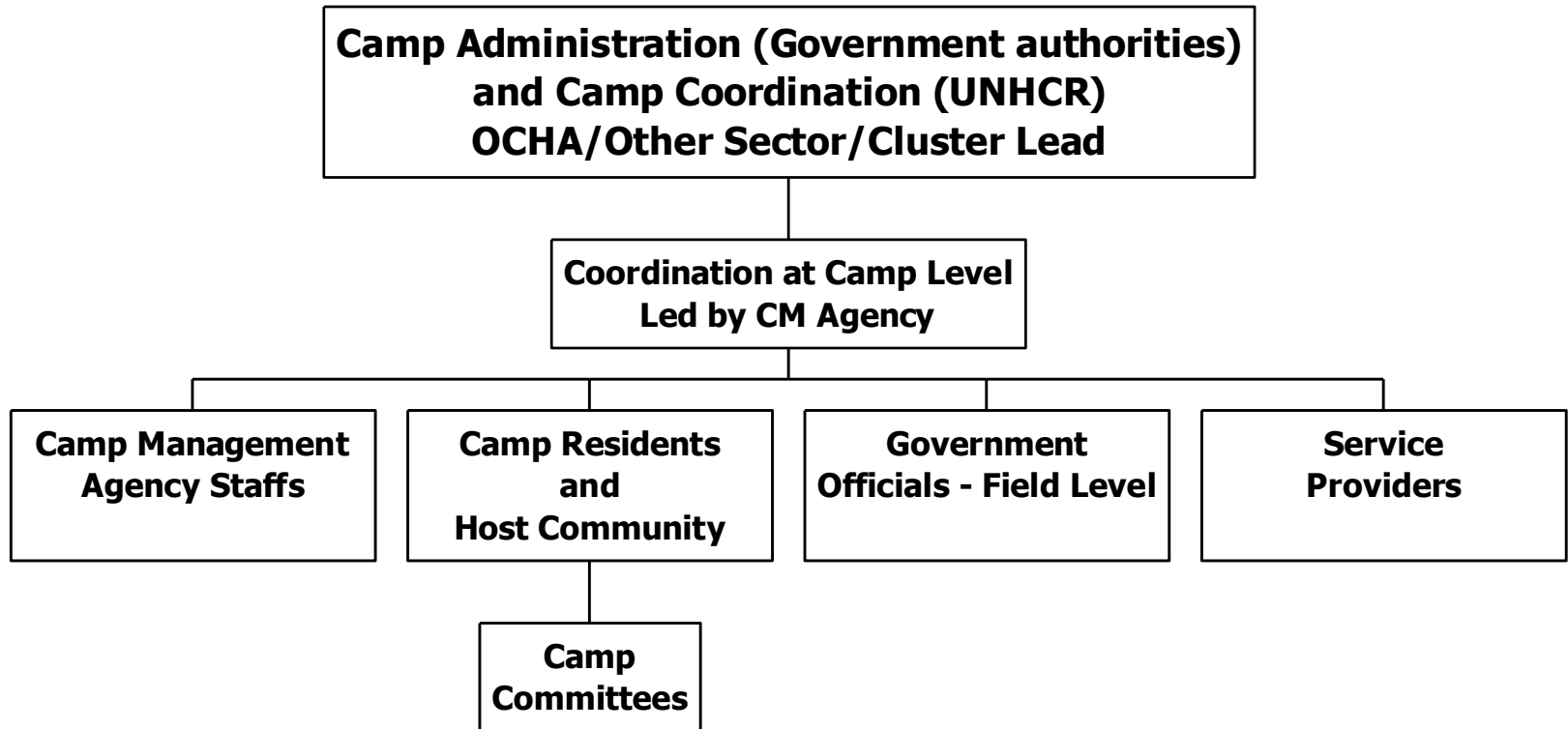
3. Camp Management (CM)

Is the role of a Camp Management Agency, **normally a National or International NGO**.

CM encompasses those activities in **one single camp** that focus on:

- co-ordination of services at camp level
- establishing inclusive governance and community mobilization
- maintenance of camp infra-structure
- data collection and sharing
- monitoring the service delivery of other providers
- close collaboration with the on-site authorities (CA) and liaison with them on behalf of all humanitarian actors when required

CCCM framework: actors



CCCM framework: where?

CCCM framework is applied in:

- Planned Camps
- Self-Settled Camps
- Reception and Transit Centers
- Collective Centers
- Dispersed individual settlements (hosted and non-hosted)

CCCM framework does not include host families

CCCM framework: when?


CCCM plays a key role, as cross-cutting framework, during the whole **camp life cycle**:

- **Planning and Set-up**
- **Care & Maintenance**
- **Durable Solution and Camp Closure**

CCCM works in close partnership with **Authorities, Protection, Shelter and WASH** sectors to ensure **International Law & Standards and Participation** are pursued in all the 3 phases

CCCM in Rakhine: population

139.107 individuals (24.261 HHs) living in 89 locations (including NRS):

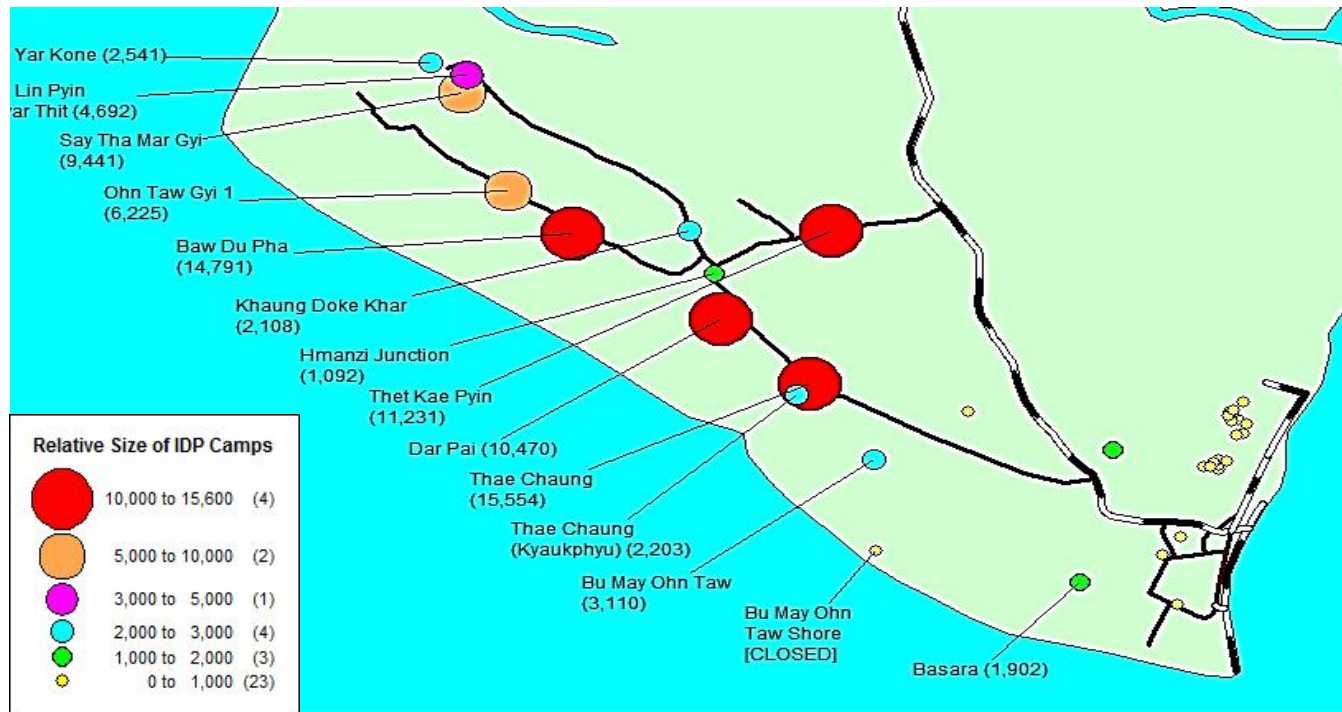
- 30 Planned Camps (99.056, 71%)
 - 4 Self-settled Camps (15.704, 11%)
 - 19 Collective Centers (776, <1%)
 - 28 Dispersed Settlements/Individual non-hosted (20.633, 15%)
 - 8 Dispersed Settlements/Individual hosted (2.938, 2%)
- 
- | |
|---------|
| 114.760 |
| 83% |

Muslims = 132.085 (95%)

CCCM in Rakhine: population

Living in Camps: 114.760 (110.597 Muslims)

- **Sittwe: 86.537 (75%)**



- Pauktaw (19.976 - 17%), Meybon (4.169 - 4%), Kyauk Phyu (2.144 - 2%)

CCCM in Rakhine: CA

- **State Level:** Border Affairs/Security and Planning Ministries, Rehabilitation & Relocation Sub-Committee (Minister of Development Affairs chairman, multi-ministry representation, DRD, LRD, NATALA)
- **Field/Camp Level:** June, Minister of Planning appointed Governmental focal points for each camp (from different ministries and bodies). Now, 1 Village/Ward Administrator for each main Tract/Camp (reports directly to Township Administrator or Senior Officials at CM Office Sittwe)
- CA have different degrees of involvement in the field (i.e. Meybon, Say Tha Mar Gyi, Basara)
- CA liaise at inter-state level for ad hoc mobilization of resources (i.e. Meybon)
- CA liaise with Camp Committees and service providers at field level. Sometimes CA is part of the Camp Committee

CCCM in Rakhine: CA

Camp Management Office Sittwe, Bu-May

- CA focal point Camps
Sittwe Muslim rural area
- Police – Army - NASAKA
(law and order, security)
- General Administration
- RRD – Social Welfare
(services provision)
- Minister of Security chairs coordination meeting weekly
- 1 or more representative per each camp (administrators)



CCCM in Rakhine: CA

Main challenges:

- Land and occupancy rights for temporary settlements, land compensation mechanisms (DRD, Land Records Department). No written terms of use
- Security (humanitarians, contractors)
- Issue of documentation for camps inhabitants
- Weak capacity for proper registration
- Strong involvement in services provision, weak transparency and accountability for beneficiary figures (i.e. food)
- Weak clarity on ToRs

CCCM in Rakhine: CC

- **Cluster lately activated (December in Yangon)**
- Since August the Shelter team provided technical guidance to the Rehabilitation & Relocation Sub-Committee
- Advocacy for shelter Sphere standards and adequate site selection
- Land surveys, site planning and set-up ongoing (Sittwe, Pauktaw, Meybon)
- NFIs management and distribution

CCCM in Rakhine: CC

Main challenges:

- Camps at risk (relocation, including community mobilization & protection/gender mainstreaming in camp set-up phase)
- Camp Management approach, partners
- Inter-camps Information Management System
- No clear plan for relocation in Sittwe Muslim area
- Access during rainy season
- **Registration, disaggregated data**
- Budget constraints


CCCM in Rakhine: CM

- **No Camp Management Agencies**
- **Camp Management Committees in all camps:** former community representatives or key players, 1-2 members per village, ward or shelter, appointed/elected, mix of HC and IDPs, no gender balance, **different degrees of command, transparency and representativeness**
- **Duties and responsibilities:** basic population data, including PWSNs, liaison/referral to CA and service providers, response to complaints, disseminate information, direct distribution of food, NFIs & H2O, shelter care and maintenance, fire response, security, address/settle disputes, select skilled and unskilled for INGOs activities or community purposes
- **Sub-Committees and voluntary groups:** Food, WASH, Health, CFS/Education, Security, Care & Maintenance, Statistic, Carpenters. **Women Committee in Meybon Muslim Camp**

CCCM in Rakhine: CM

Sustaining/empowering Committees:

- ToR, Code of Conducts, indicators of success
- Meeting procedures (schedule, place and time)
- Decision making and Info dissemination process
- Sector-specific monitoring tools
- Rotation procedures for roles and responsibilities
- Grievance and removal procedures
- Capacity building and training
- Common policy on salaries/incentives



More
accountability,
efficiency

CMC profile:

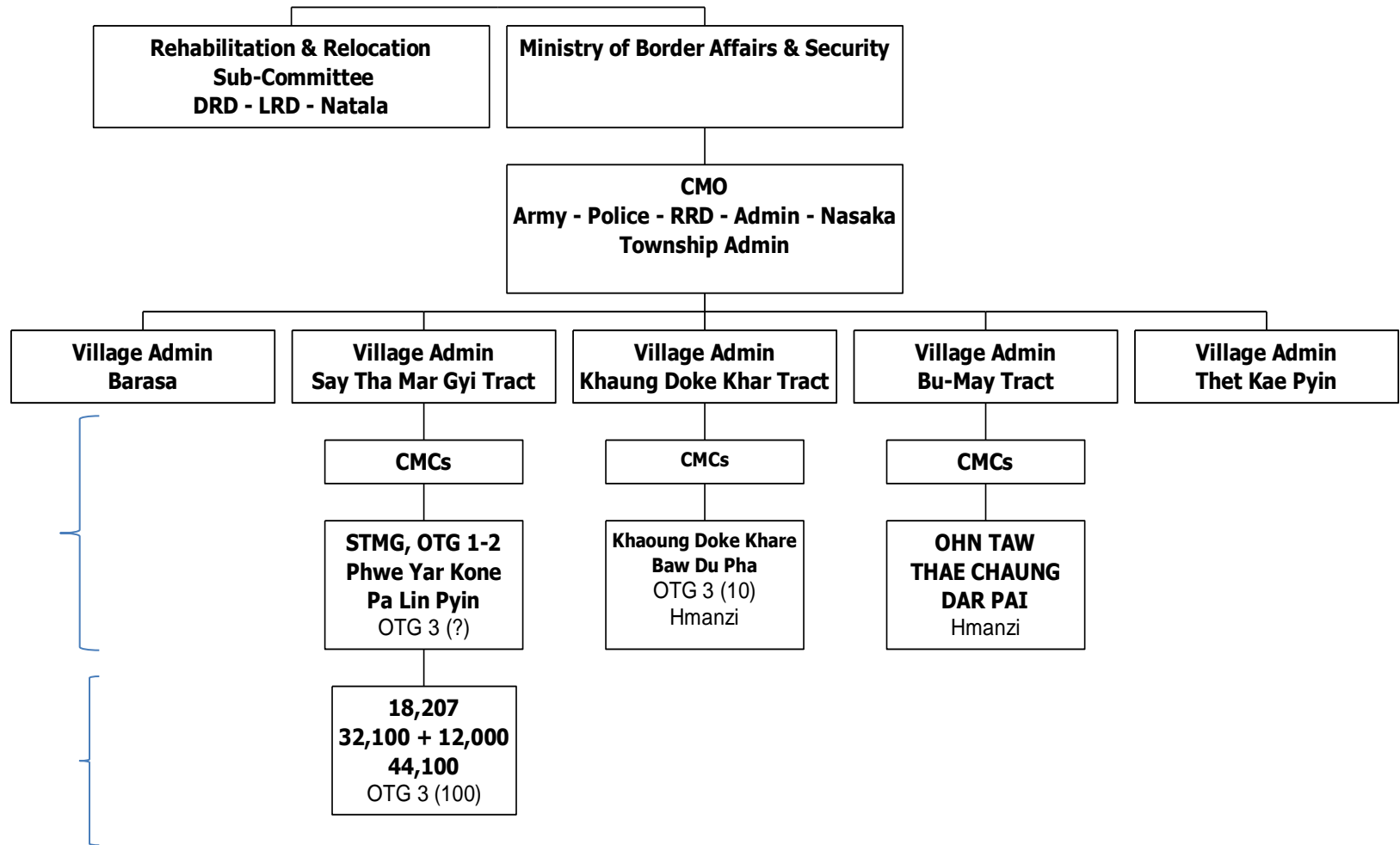
- Sittwe: Rakhine camps, Say Tha Mar Gyi
- Meybon
- Pauktaw (Kyen Ni Pyin, Nget Chaung, Sin Tet Maw)

CCCM in Rakhine: CM

Main challenges:

- **CM approach in Sittwe**, engage I/LNGOs as CM Agencies ensuring coverage of multiple camps, given the limited resources and Government relocation plan
- **CM in other townships** (lack partners, logistic constraints, context sensitivity), capacity building/empowerment of existing structures, CA and CMCs, INGOs focal points
- **Care & Maintenance of shelters**

CCCM in Sittwe: general



CCCM in Rakhine: priorities

- **Camp Management**

- Draft strategy for Sittwe and share with interested CM agencies
- Capacity building plan for CA & CMC, especially out of Sittwe
- Support to agencies working through Sectorial Committees
- UNHCR direct involvement strategy

- **Information Management System**

- **Update and share the Camp List** (including statistics) monthly
- **Develop and share a Camp Profiling Tool** (geographic and population data, standards & indicators per each sector, 3W matrix, contact list)

- **Empower relationship with CA**

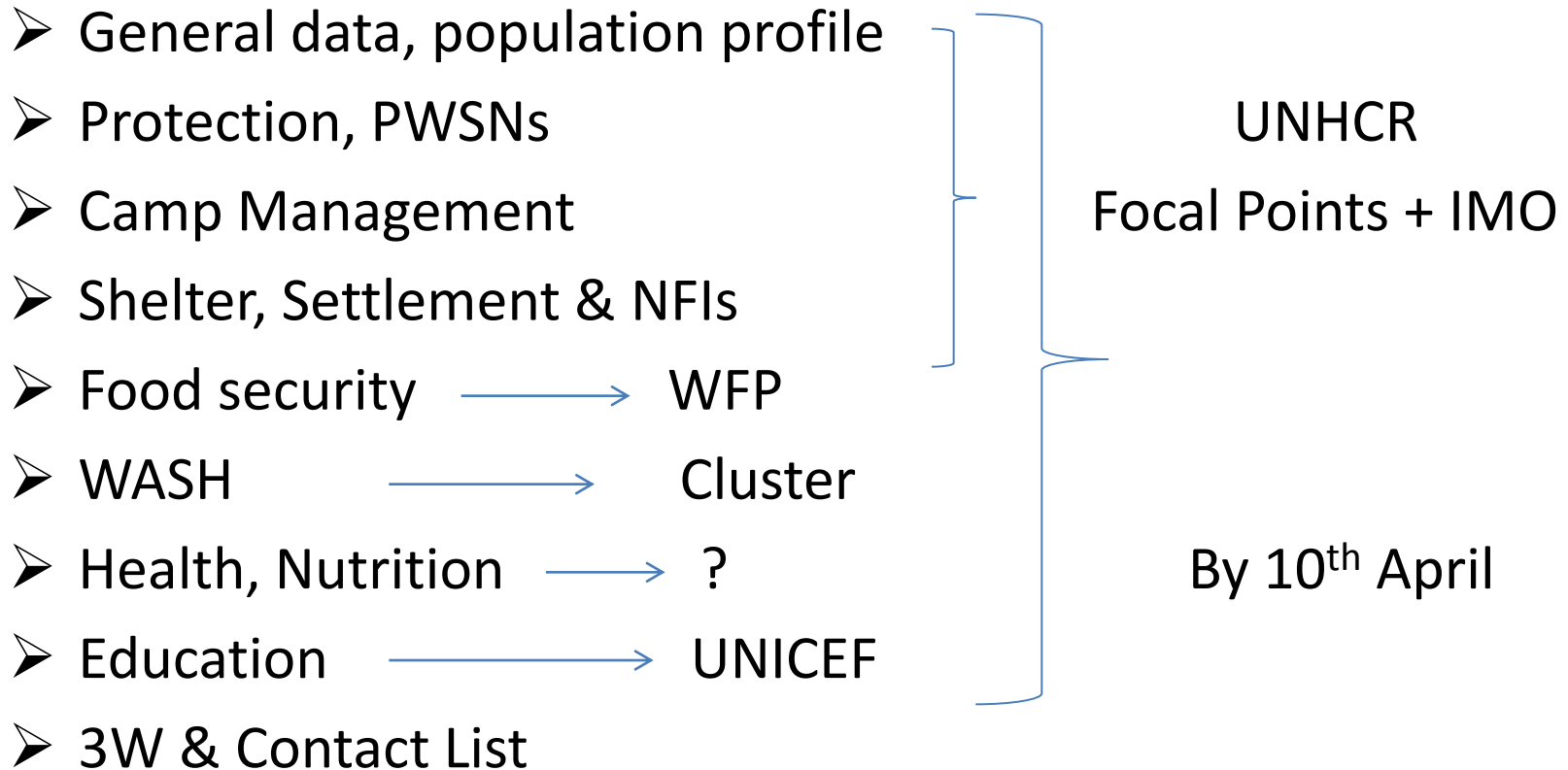
- Regular meetings with key authority players and advocacy for joint planning. General more clarity about ToRs

CCCM in Rakhine: discussion/questions



CCCM in Rakhine: action points

- CCCM priorities = action points for the CC
- Camp Profiling tool, key indicators and info:



CCCM in Rakhine: contacts

ANDREA PAIATO, Cluster Coordinator

Mobile: 094-20237222

Email: PAIATO@unhcr.org

ALICIA ORTEGA, Information Manager Officer

Mobile: 095-068069

Email: ORTEGA@unhcr.org

NEXT MEETING:

Wednesday 10th APRIL 14:30 (Venue to be confirmed)