



Date: 5/29/2017

### WELLS

- Existing Wells
- Proposed Wells are not reflected on map. Please refer to Master Plan 2015 (PDF)
- LCRP Project
- Non LCRP Project

### RESERVOIRS

- Existing Reservoirs
- Existing Tower Reservoirs
- Proposed Reservoirs
- Proposed Tower Reservoirs
- Under Construction Reservoirs
- LCRP Projects

### NETWORKS

- Existing Networks
- Water Transmission Line
- Proposed Networks
- LCRP Projects
- Non LCRP Projects

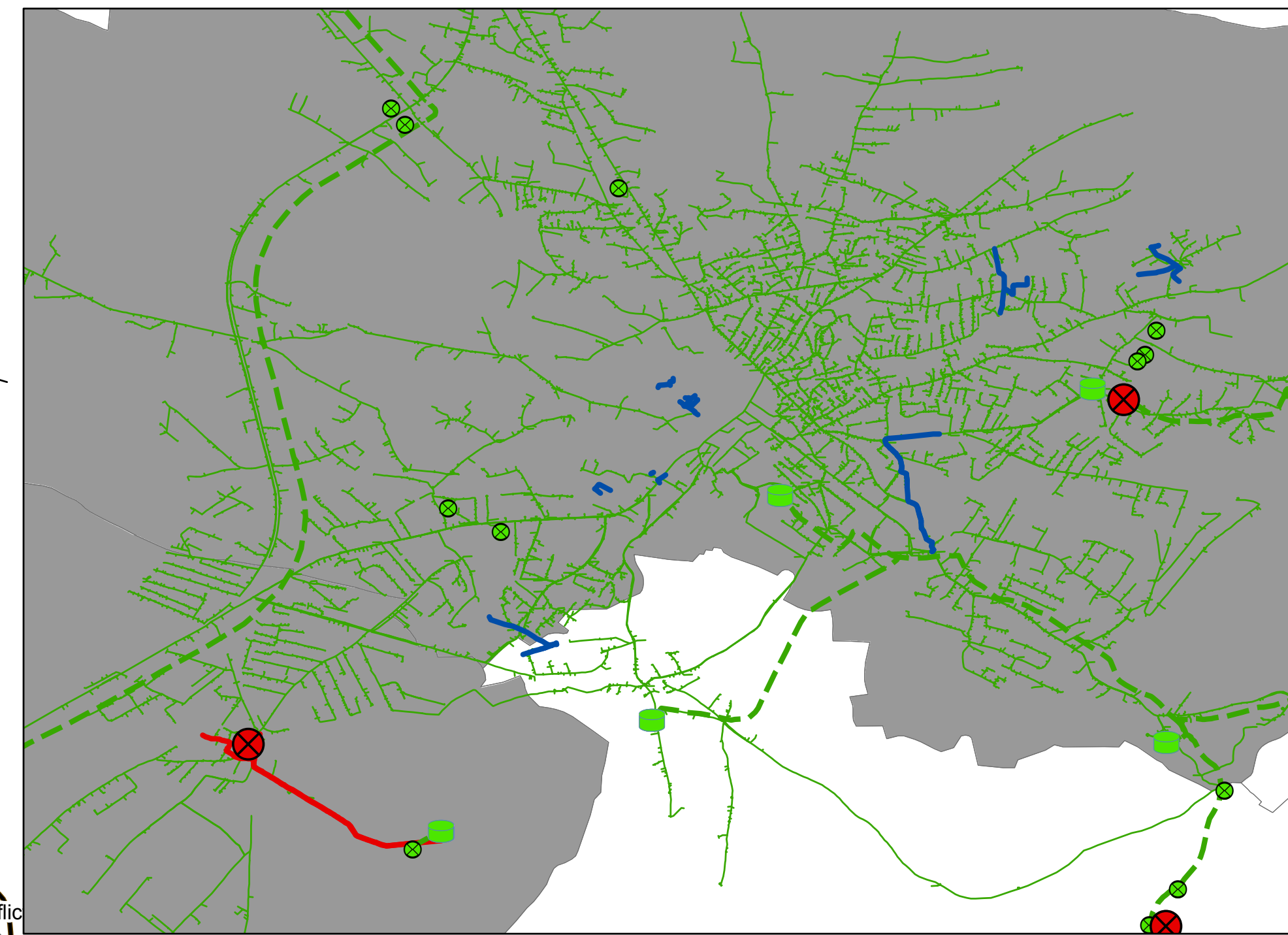
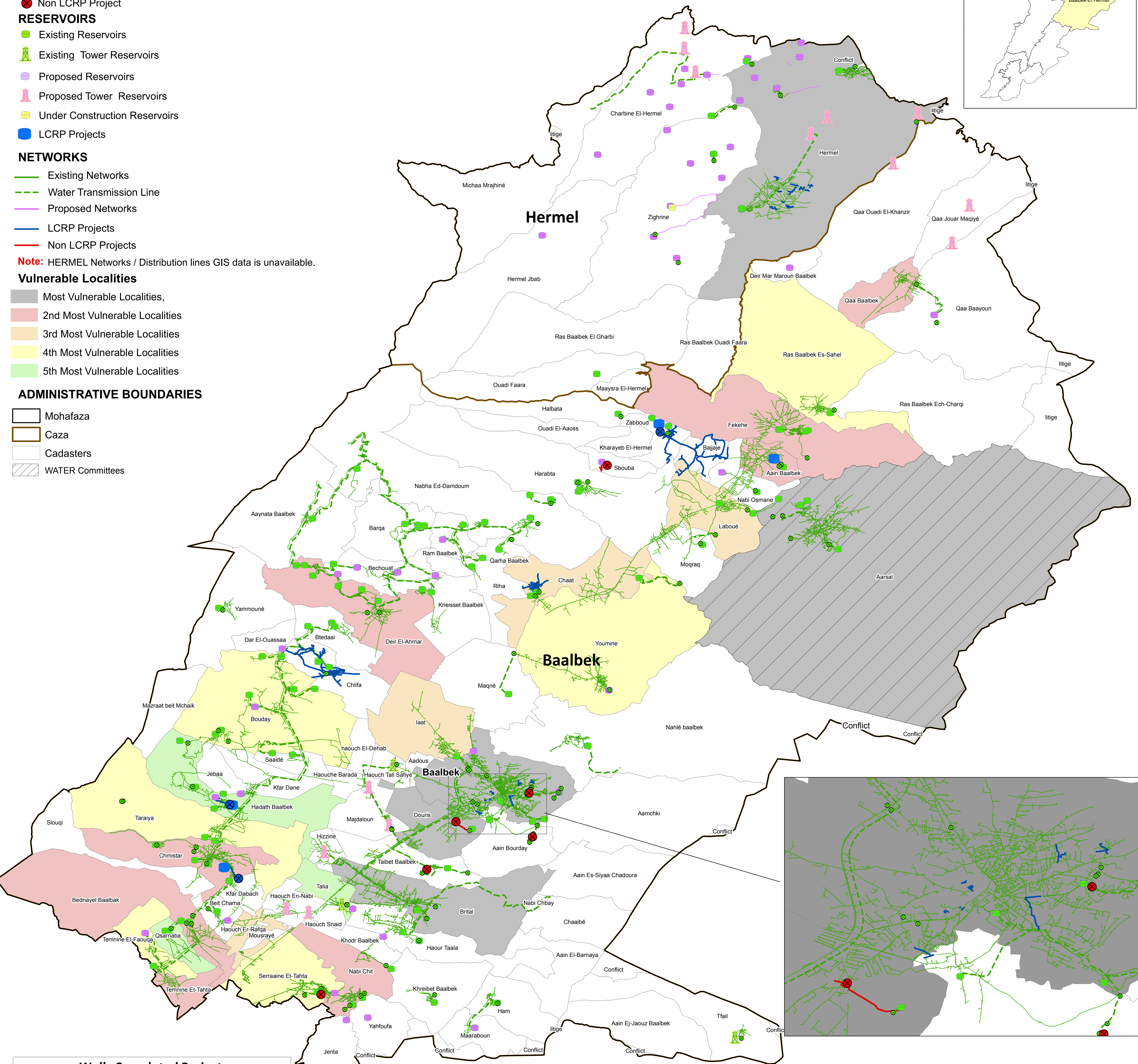
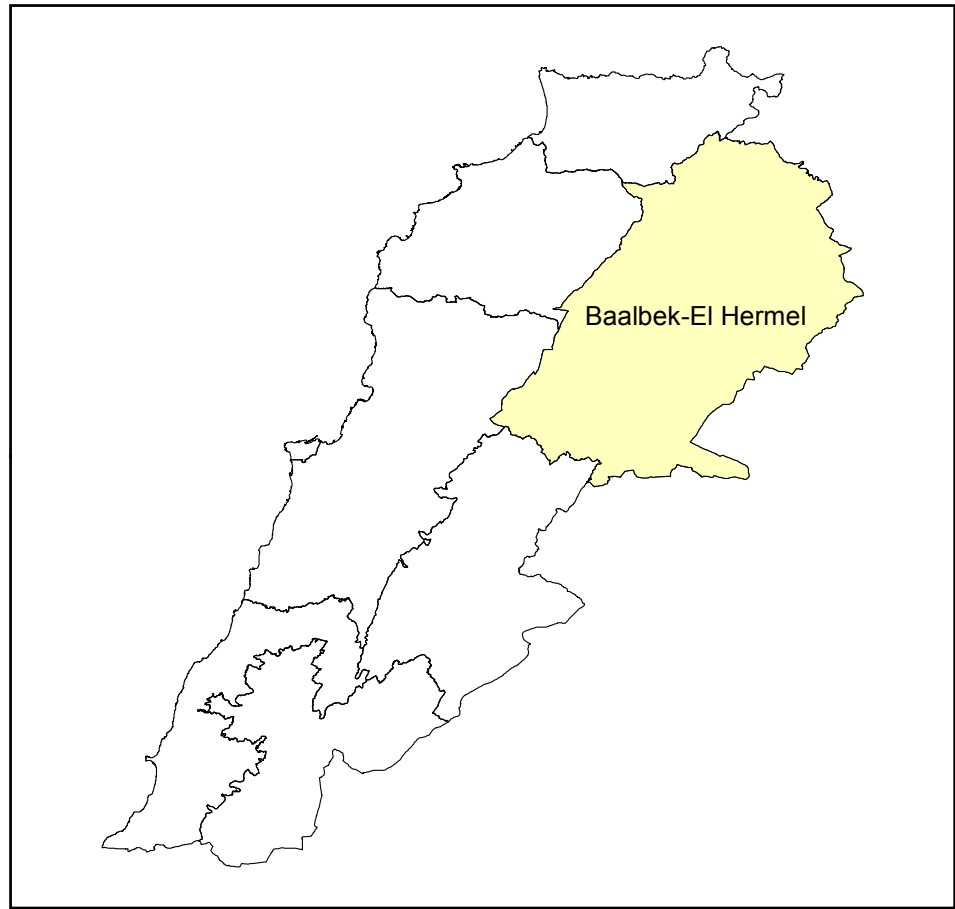
**Note:** HERMEL Networks / Distribution lines GIS data is unavailable.

### Vulnerable Localities

- Most Vulnerable Localities
- 2nd Most Vulnerable Localities
- 3rd Most Vulnerable Localities
- 4th Most Vulnerable Localities
- 5th Most Vulnerable Localities

### ADMINISTRATIVE BOUNDARIES

- Mohafaza
- Caza
- Cadasters
- WATER Committees



### Wells Completed Projects

Partner	Cadaster	Year of Completion	Project Type
GVC	Zabboub	2016	LCRP
UNICEF	Hadath Baalbek	2016	LCRP
UNICEF	Chmistar	2016	LCRP
BWE	Baalbek	TBC	Non LCRP
BWE	Sbouba	TBC	Non LCRP
BWE	Douris	TBC	Non LCRP
BWE	Taibet Baalbek	TBC	Non LCRP
BWE	Serraine Et-Tahta	TBC	Non LCRP
BWE	Aain Bourday	TBC	Non LCRP

### Reservoirs Completed Projects

Partner	Cadaster	Year of Completion	Project Type
GVC	Zabboub	2016	LCRP
GVC	Aain Baalbek	2016	LCRP
UNICEF	Chmistar	2016	LCRP
UNICEF	Hadath Baalbek	2016	LCRP

### Projects with no GIS data

Partner	Cadaster	Project Activities	Date of Full Project Completion
Mercy Corps	Baalbek,Douris,Kfar dane,Hadath Baalbek,Chaat	Water and wastewater networks, pumping systems, School WaSH facility rehabilitation	31-May-16

### Networks Completed Projects

Partner	Cadaster	Year of Completion	Project Type
UNICEF	Baalbek	2014	LCRP
UNICEF	Hermel	2014	LCRP
UNICEF	Chaat	2016	LCRP
UNICEF	Chlifa	2016	LCRP
UNICEF	Chmistar	2016	LCRP
UNICEF	Hadath Baalbek	2016	LCRP
OXFAM	Baalbek	2014	LCRP
GVC	Lower Labwe	2017	LCRP
GVC	Bajaje	2017	LCRP
BWE	Sbouba	2013	Non LCRP
ICRC	Douris	2015	Non LCRP

Source: Water networks data from the final Data Master Plan 2015 with updates from the BWE 2016. Only completed Projects where GIS data provided to WE have been mapped. Calculation of Most vulnerable Localities are based on following data sets.  
1- Multi-Deprivation Index  
2-Lebanese population dataset  
3- Refugee population figures  
The top quintile of the vulnerability mapping includes 251 localities

This map has been produced by the WATER Sector Management officer based on maps and material provided by the Government of Lebanon for operational purposes. It does not constitute an official United Nations map. The designations employed and the presentation of material on this map do not imply the expression of any opinion whatsoever on the part of the Secretariat of the United Nations concerning the legal status of any country, territory, city or area or of its authorities, or concerning the delimitation of its frontiers or boundary

