

# SYRIA REFUGEE RESPONSE

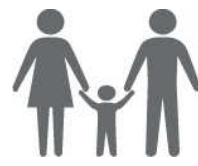
## LEBANON Beirut and Mount Lebanon Governorates

### Distribution of the Registered Syrian Refugees at the Cadastral Level

As of 30 November 2017

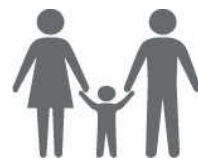
#### Distribution of the Registered Syrian Refugees by Province

##### BEIRUT

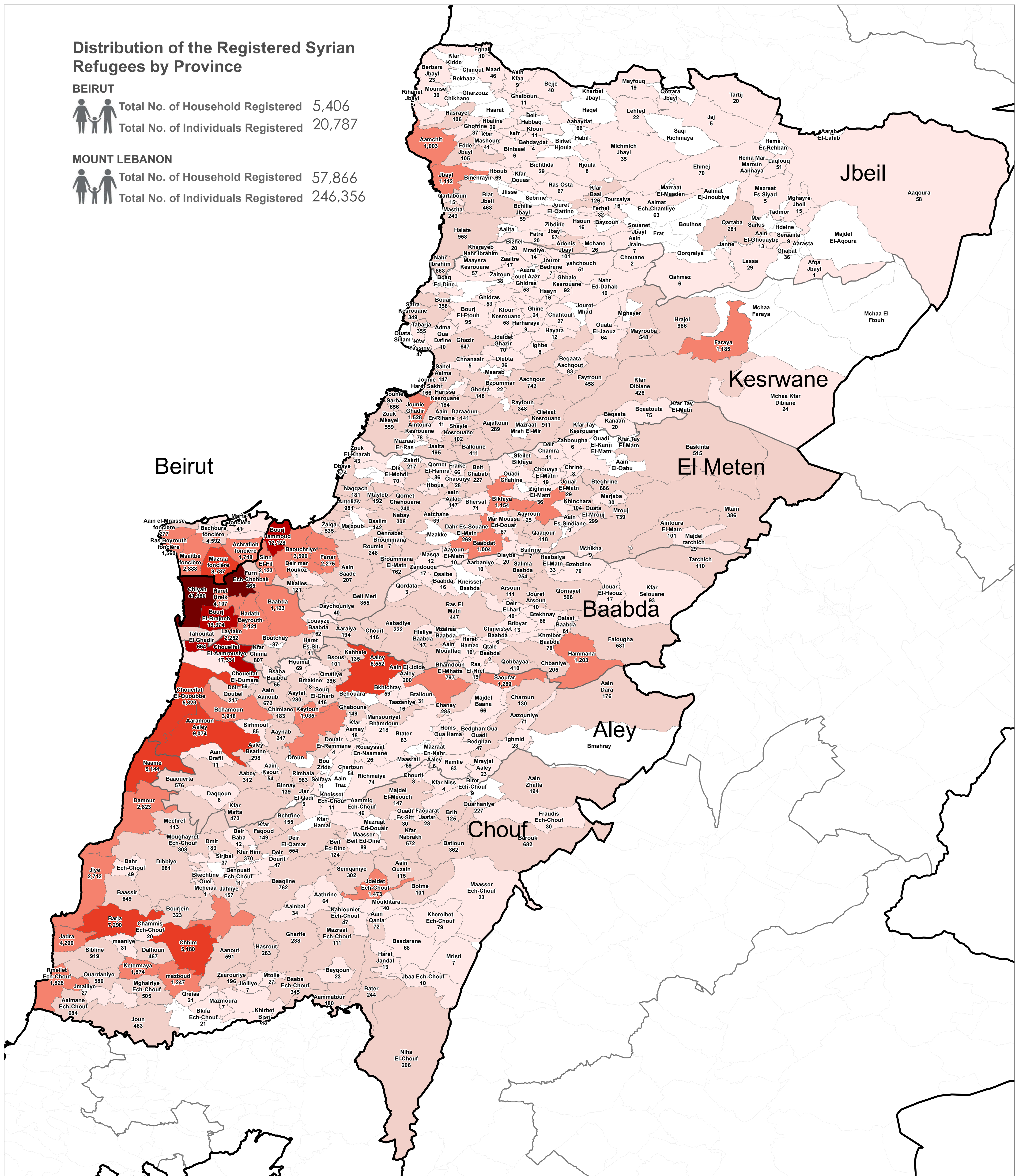


Total No. of Household Registered 5,406  
Total No. of Individuals Registered 20,787

##### MOUNT LEBANON



Total No. of Household Registered 57,866  
Total No. of Individuals Registered 246,356



#### Notes

This map has been produced by the Inter-Agency Information Management Unit of UNHCR based on maps and material provided by the Government of Lebanon for operational purposes. It does not constitute an official United Nations map. The designations employed and the presentation of material on this map do not imply the expression of any opinion whatsoever on the part of the Secretariat of the United Nations concerning the legal status of any country, territory, city or area or of its authorities, or concerning the delimitation of its frontiers or boundaries.

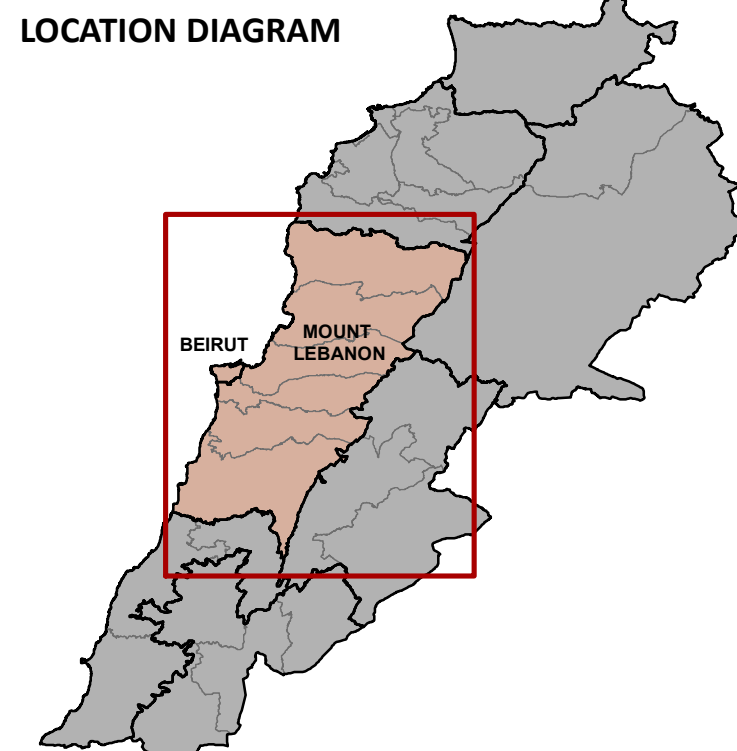
Data Sources:  
- Lebanese Border, Caza and Cadastral Boundaries: NPMPLT 2005.  
- Geographic Projection WGS 1984

Registered Refugees Figures by UNHCR as of 30 November 2017.  
For more information contact Diana El Habr at elhabr@unhcr.org

GIS and Mapping by UNHCR. For information and updates  
contact Jad Ghosn: ghosn@unhcr.org  
Maroun Sader: sader@unhcr.org

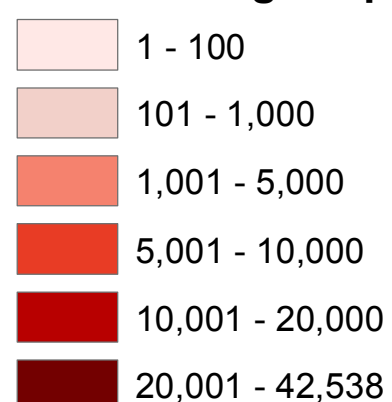
NPMPLT: National Physical Master Plan for the Lebanese Territory

#### LOCATION DIAGRAM



#### Legend

##### No. of Refugees per Cadastral



Governmentate  
Caza

The No. indicates the registered refugees at the cadastral level

