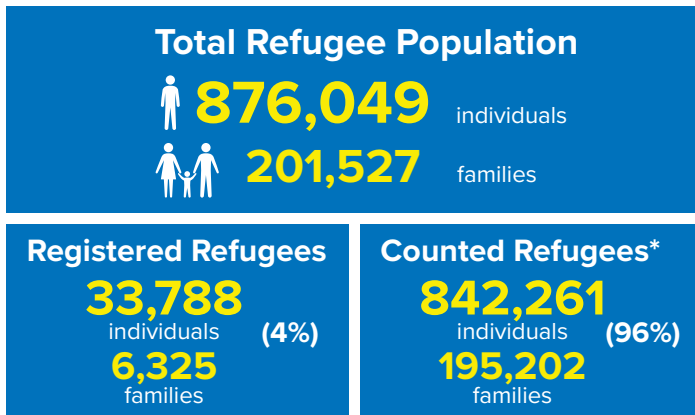
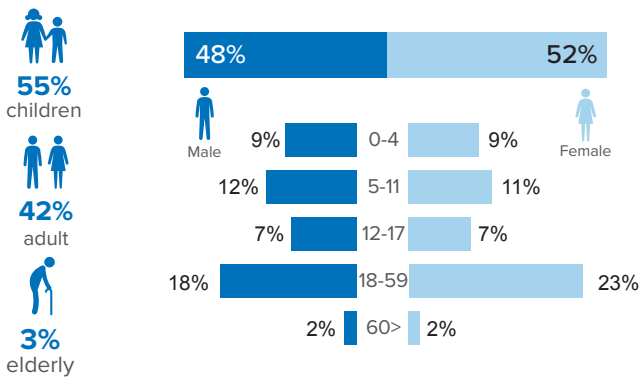


Refugee Population Figure

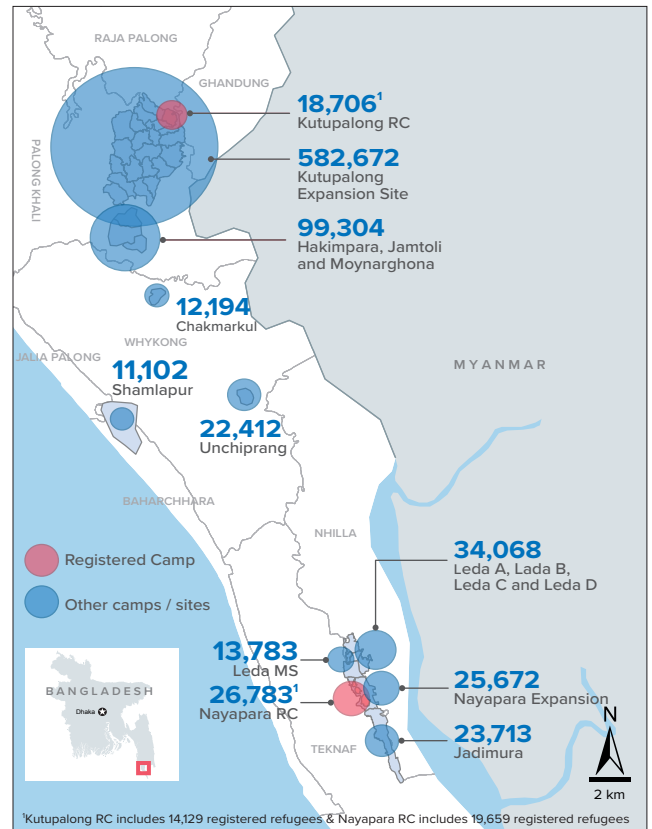


* Some refugees living in host communities and in certain locations beyond the camp boundaries may not have been counted.

Demography



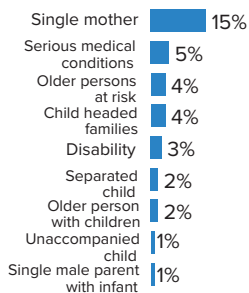
Refugee Population Density



The boundaries and names shown and the designations used on this map do not imply official endorsement or acceptance by the United Nations.

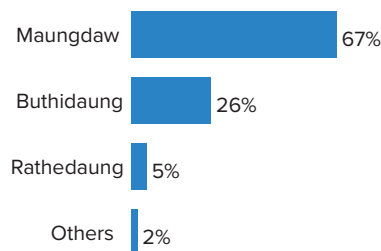
Specific Needs

31% of households have been identified with at least one protection vulnerability*



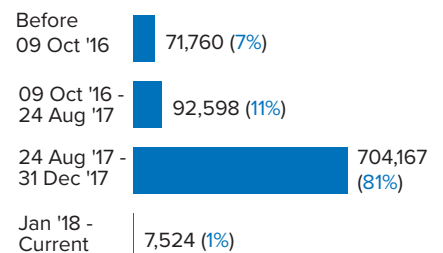
Place of Origin

67% of the Rohingya refugees comes from Maungdaw Township



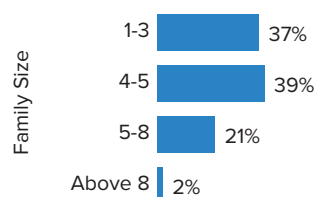
Period of arrival

81% of current population arrived between Aug. and Dec 2017



Family Size Breakdown

39% of the families have a standard family size of 4-5 persons



Linking Exercise

The Linking Exercise, conducted from December 2017 until February 2018, was a collaborative effort between the Government of Bangladesh and the United Nations High Commissioner for Refugees that aimed to merge the family based Rohingya population data collected through the Family Counting Exercise with attributes of the individual Rohingya population data collected by the Ministry of Home Affairs.

The exercise was conducted with a view to creating a unified dataset with individual data grouped into families which will be used to better protect and assist families.

*Figures are the percentage of total families with at least one person with a specific need. More than one specific need may be present within one family.

Age and gender breakdown by camp/site

Camp / Site	New born female	New born male	1-4 Children female	1-4 Children male	5-11 Children female	5-11 Children male	12-17 Children female	12-17 Children male	18-59 Adult female	18-59 Adult male	60+ Elderly female	60+ Elderly male	Total Families	Total Individuals
Camp 15	898	839	3,293	3,427	5,012	5,204	3,201	3,415	10,781	8,587	837	852	10,458	46,346
Camp 13	703	749	3,039	3,138	4,444	4,707	2,728	2,796	9,587	7,616	735	677	9,587	40,919
Camp 1W	764	762	2,930	2,950	4,403	4,452	2,683	2,783	9,597	7,718	849	749	9,370	40,640
Camp 3	729	749	3,075	3,155	4,312	4,541	2,714	2,657	9,368	7,394	737	673	9,520	40,104
Camp 7	658	736	2,778	2,943	4,245	4,460	2,640	2,765	9,250	7,732	803	693	9,132	39,703
Camp 1E	684	736	3,036	3,088	4,182	4,412	2,518	2,685	9,346	7,302	678	587	9,114	39,254
Camp 9	620	563	2,783	2,805	4,010	4,038	2,492	2,505	8,543	6,944	716	691	8,656	36,710
Camp 10	669	653	2,716	2,860	3,555	3,940	2,244	2,212	8,192	6,410	643	556	8,060	34,650
Camp 8E	528	531	2,425	2,512	3,592	3,707	2,454	2,395	7,866	6,296	593	587	7,730	33,486
Camp 11	584	623	2,473	2,529	3,533	3,759	2,228	2,304	7,623	6,219	562	515	7,483	32,952
Camp 8W	555	533	2,618	2,583	3,467	3,650	2,056	2,175	7,679	6,132	612	547	7,491	32,607
Camp 14	556	579	2,248	2,486	3,319	3,667	2,235	2,231	7,157	5,753	593	520	6,900	31,344
Camp 4	555	586	2,245	2,397	3,340	3,481	1,932	1,926	7,072	5,514	478	377	7,350	29,903
Camp 18	486	520	2,272	2,340	2,971	3,092	1,855	1,749	6,629	5,188	363	382	6,810	27,847
Camp 2E	522	498	2,085	2,133	3,053	3,345	1,709	1,752	6,669	5,055	497	426	6,628	27,744
Nayapara RC*	90	89	1,546	1,616	2,935	3,050	2,213	2,240	7,158	4,976	454	416	5,720	26,783
Camp 5	457	493	2,023	2,102	2,831	2,905	1,586	1,662	6,117	4,761	464	420	6,203	25,821
Nayapara Exp	436	365	1,826	1,904	2,930	3,174	1,963	1,812	6,195	4,297	419	351	5,892	25,672
Camp 6	514	442	1,971	2,090	2,666	2,834	1,429	1,533	5,676	4,499	427	384	5,695	24,465
Camp 2W	400	393	1,759	1,866	2,710	2,978	1,520	1,526	5,620	4,509	481	361	5,467	24,123
Jadimura	392	367	1,869	1,874	2,765	2,986	1,636	1,701	5,522	3,933	347	321	5,270	23,713
Unchiprang	413	387	1,613	1,808	2,573	2,644	1,696	1,688	4,877	4,003	378	332	4,619	22,412
Camp 12	370	359	1,620	1,703	2,371	2,657	1,577	1,535	5,119	3,999	407	352	4,896	22,069
Camp 16	434	394	1,591	1,673	2,332	2,545	1,523	1,442	4,968	4,006	383	323	4,830	21,614
Camp 19	314	302	1,429	1,514	2,049	2,271	1,322	1,358	4,397	3,438	314	274	4,354	18,982
Kutupalong RC*	86	73	1,085	1,258	1,988	2,124	1,481	1,436	4,784	3,812	295	284	3,752	18,706
Leda A	255	259	1,100	1,154	1,566	1,701	1,009	987	3,357	2,489	219	209	3,379	14,305
Leda MS	198	188	839	909	1,761	1,786	925	1,009	3,247	2,573	211	137	3,035	13,783
Chakmarkul	224	216	887	956	1,324	1,402	758	810	2,931	2,374	180	132	2,978	12,194
Shamlapur	183	202	818	853	1,472	1,507	637	656	2,723	1,714	173	164	2,693	11,102
Leda D	143	176	760	733	1,170	1,299	785	722	2,346	1,680	177	109	2,281	10,100
Camp 17	151	178	822	839	1,075	1,129	635	607	2,331	1,774	138	145	2,315	9,824
Leda C	104	96	483	533	821	816	421	465	1,624	1,088	116	98	1,617	6,665
No Camp**	88	100	435	476	573	586	414	378	1,328	1,061	112	89	1,314	5,640
Leda B	45	50	210	246	328	311	246	217	735	496	68	46	712	2,998
Camp 20	22	12	68	57	108	100	48	50	212	167	12	13	216	869
Total	14,830	14,798	64,770	67,510	95,786	101,260	59,513	60,184	206,626	161,509	15,471	13,792	201,527	876,049

*Kutupalong RC includes 14,129 registered refugees & Nayapara RC includes 19,659 registered refugees

**This represents refugees residing outside formal camp / site boundaries

Population figures by period of arrival

Arrival Period	Before 09 Oct 2016		09 Oct 2016 - 24 Aug 2017		25 Aug 2017 - 31 Dec 2017		01 Jan 2018 - Current date		Total Families	Total Individuals
Camp / Site	Total Families	Total Individuals	Total Families	Total Individuals	Total Families	Total Individuals	Total Families	Total Individuals		
Camp 15	11	47	717	3,173	9,730	43,126			10,458	46,346
Camp 13	11	42	791	3,455	8,784	37,418	1	4	9,587	40,919
Camp 1W	19	75	1,035	4,434	8,303	36,087	13	44	9,370	40,640
Camp 3	121	537	1,062	4,596	8,325	34,916	12	55	9,520	40,104
Camp 7	35	168	1,604	6,893	7,477	32,584	16	58	9,132	39,703
Camp 1E	15	71	955	4,197	8,137	34,959	7	27	9,114	39,254
Camp 9	89	349	2,147	8,740	6,418	27,613	2	8	8,656	36,710
Camp 10	10	45	628	2,678	7,415	31,902	7	25	8,060	34,650
Camp 8E	38	156	897	3,936	6,785	29,352	10	42	7,730	33,486
Camp 11	1	3	1,148	5,105	6,334	27,844			7,483	32,952
Camp 8W	23	106	660	2,888	6,764	29,451	44	162	7,491	32,607
Camp 14	7	25	597	2,774	6,295	28,540	1	5	6,900	31,344
Camp 4	15	66	281	1,160	6,881	27,940	173	737	7,350	29,903
Camp 18	14	60	173	717	6,601	26,989	22	81	6,810	27,847
Camp 2E	3,167	13,447	1,627	6,897	1,834	7,400			6,628	27,744
Nayapara RC*	3,754	19,862	249	970	1,693	5,896	24	55	5,720	26,783
Camp 5	20	77	552	2,359	5,629	23,376	2	9	6,203	25,821
Nayapara Exp	46	236	493	2,203	5,337	23,173	16	60	5,892	25,672
Camp 6	57	257	1,081	4,872	4,555	19,327	2	9	5,695	24,465
Camp 2W	1,809	8,322	1,353	5,914	2,303	9,881	2	6	5,467	24,123
Jadimura	50	242	492	2,312	4,446	19,939	282	1,220	5,270	23,713
Unchiprang	5	33	211	1,024	4,402	21,352	1	3	4,619	22,412
Camp 12	3	15	237	1,076	4,652	20,958	4	20	4,896	22,069
Camp 16	5	25	282	1,251	4,543	20,338			4,830	21,614
Camp 19			373	1,693	3,957	17,180	24	109	4,354	18,982
Kutupalong RC*	2,932	15,462	195	777	616	2,443	9	24	3,752	18,706
Leda A	10	38	330	1,447	3,031	12,790	8	30	3,379	14,305
Leda MS	2,092	10,155	168	652	775	2,976			3,035	13,783
Chakmarkul	11	48	151	657	2,765	11,295	51	194	2,978	12,194
Shamlapur	260	1,195	287	1,222	2,130	8,616	16	69	2,693	11,102
Leda D	53	270	255	1,133	1,970	8,684	3	13	2,281	10,100
Camp 17	5	21	75	296	1,291	5,345	944	4,162	2,315	9,824
Leda C	59	242	100	402	1,455	6,012	3	9	1,617	6,665
No Camp**	11	54	145	630	1,114	4,756	44	200	1,314	5,640
Leda B	1	9	15	60	693	2,919	3	10	712	2,998
Camp 20			1	5	195	790	20	74	216	869
Grand Total	14,759	71,760	21,367	92,598	163,635	704,167	1,766	7,524	201,527	876,049

*Kutupalong RC includes 14,129 registered refugees & Nayapara RC includes 19,659 registered refugees

**This represents refugees residing outside formal camp / site boundaries

Population figures by specific needs

Camp / site	Child headed families	Families with separated children	Families with unaccompanied children	Families with a person with disability	Families with older person at risk	Families with older person at risk with children	Families with people with serious medical condition	Single male parents with infants	Single female parent	Families with people with specific needs
Camp 15	252	219	56	319	523	188	409	60	1,538	2,984
Camp 1E	285	169	41	549	452	326	481	55	1,085	2,895
Nayapara RC	170	220	28	362	375	248	471	113	1,221	2,847
Camp 7	135	173	41	604	170	51	1,202	33	1,199	2,836
Camp 13	312	251	79	310	395	208	344	64	1,430	2,761
Camp 1W	123	162	32	392	440	213	448	65	1,236	2,749
Camp 3	242	197	62	372	346	292	330	65	1,429	2,659
Camp 10	325	137	86	428	374	270	552	102	1,127	2,619
Camp 9	388	152	75	387	393	265	497	100	1,062	2,547
Camp 8E	373	171	78	374	397	261	442	91	1,135	2,500
Camp 4	239	212	87	152	236	175	221	102	1,327	2,438
Camp 18	208	157	62	251	226	173	313	85	1,180	2,170
Camp 11	235	176	64	294	314	166	251	72	1,139	2,087
Camp 5	202	150	47	250	236	188	304	46	1,062	2,034
Camp 2E	214	164	73	212	291	173	212	64	1,117	2,010
Nayapara Exp	122	103	39	183	228	67	142	48	1,298	1,968
Camp 14	166	121	47	189	322	137	309	42	970	1,870
Camp 6	158	161	44	222	240	126	321	40	798	1,791
Jadimura	89	82	18	160	155	58	102	40	1,148	1,764
Camp 8W	236	87	37	249	265	160	298	80	722	1,690
Camp 2W	91	101	16	271	226	110	254	55	704	1,596
Kutupalong RC	68	60	14	350	103	37	769	9	560	1,581
Camp 12	108	81	34	144	202	104	139	34	785	1,356
Camp 16	108	92	22	171	202	82	162	37	710	1,322
Camp 19	133	117	30	181	208	80	115	44	688	1,311
Leda A	113	82	37	113	124	66	135	19	708	1,188
Unchiprang	95	70	19	160	156	77	153	16	581	1,118
Shamlapur	58	50	12	75	99	43	70	11	756	1,028
Leda MS	80	58	22	106	85	32	104	32	449	870
Chakmarkul	74	52	28	129	100	31	80	17	483	845
Leda D	74	42	25	72	78	37	86	18	529	795
Leda C	22	18	8	18	36	18	25	3	136	723
Camp 17	62	50	9	69	74	26	60	10	438	665
No Camp	48	32	11	49	97	16	62	5	187	439
Leda B	14	9	6	20	34	13	14	3	191	262
Camp 20	5	5	3	5	4	2	4		21	47
Total	5,627	4,183	1,392	8,192	8,206	4,519	9,881	1,680	31,149	62,365

Population density by camps in KTP

Using GIS technology, polygons of the camps were established. The GPS coordinates of each family were then mapped into the polygons, in order to determine the total number of families and individuals within each camp.

Based on the high quality drone imagery and field mapping conducted by Site Planning unit, the total usable area and non-usable area was calculated jointly by UNHCR with IOM. While the usable area refers to areas populated by refugees, the non-usable areas refers to flood and landslide prone areas.

Note: The recommended minimum surface area is 45 m² per person when planning a refugee camp (including kitchen / vegetable gardening space). However the actual surface area per person (excluding garden space) should not be less than 30 m² per person.

Camp	Total Families	Total Individuals	Useable area (sqm)	% useable area	Unuseable area (sqm)	Average usable area per person (sqm)
Camp 6	5,695	24,465	15,549.132	0.043	346,464.545	0.636
Camp 7	9,520	40,104	187,746.251	0.263	526,339.249	4.681
Camp 18	6,810	27,847	215,867.551	0.287	535,809.108	7.752
Camp 10	8,060	34,650	275,403.520	0.555	220,741.926	7.948
Camp 8W	7,491	32,607	261,919.443	0.339	510,261.655	8.033
Camp 2E	6,628	27,744	231,810.435	0.595	157,511.492	8.355
Camp 11	7,483	32,952	291,155.076	0.625	174,864.364	8.836
Camp 3	9,114	39,254	370,579.305	0.806	89,175.009	9.441
Camp 9	8,656	36,710	364,589.856	0.562	284,492.949	9.932
Camp 2W	5,467	24,123	251,214.118	0.630	147,230.927	10.414
Camp 17	2,315	9,824	105,265.735	0.120	773,225.497	10.715
Camp 1W	9,370	40,640	453,408.960	0.848	80,984.993	11.157
Camp 4	7,350	29,903	358,275.425	0.319	765,423.698	11.981
Camp 5	6,203	25,821	312,596.386	0.508	302,700.815	12.106
Camp 8E	7,730	33,486	433,694.962	0.453	522,855.700	12.952
Camp 13	9,587	40,919	566,311.361	0.759	180,248.889	13.840
Camp 1E	9,132	39,703	608,228.119	0.960	25,354.869	15.319
Camp 19	4,354	18,982	340,459.649	0.477	373,588.119	17.936
Kutupalong RC*	3,752	18,706	340,824.720	0.894	40,514.956	18.220
Camp 12	4,896	22,069	487,402.758	0.772	143,735.693	22.085
Camp 20	216	869	230,466.416	0.462	268,065.658	265.209

*Kutupalong RC includes 14,129 registered refugees