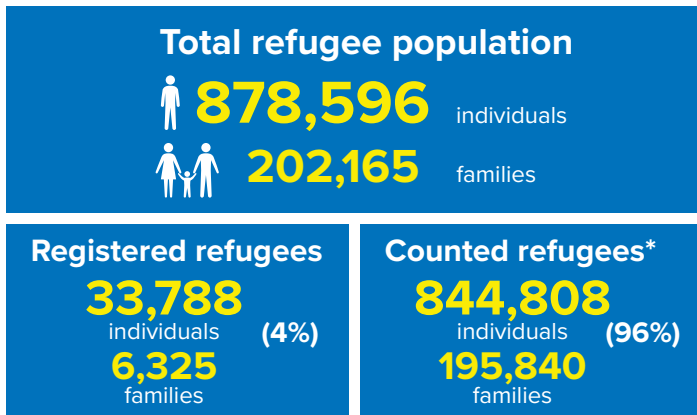
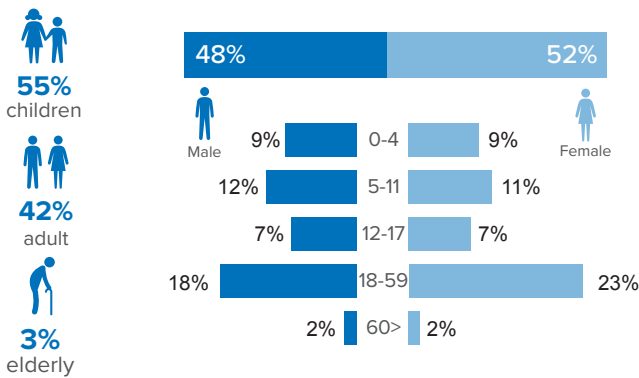


Refugee population figure

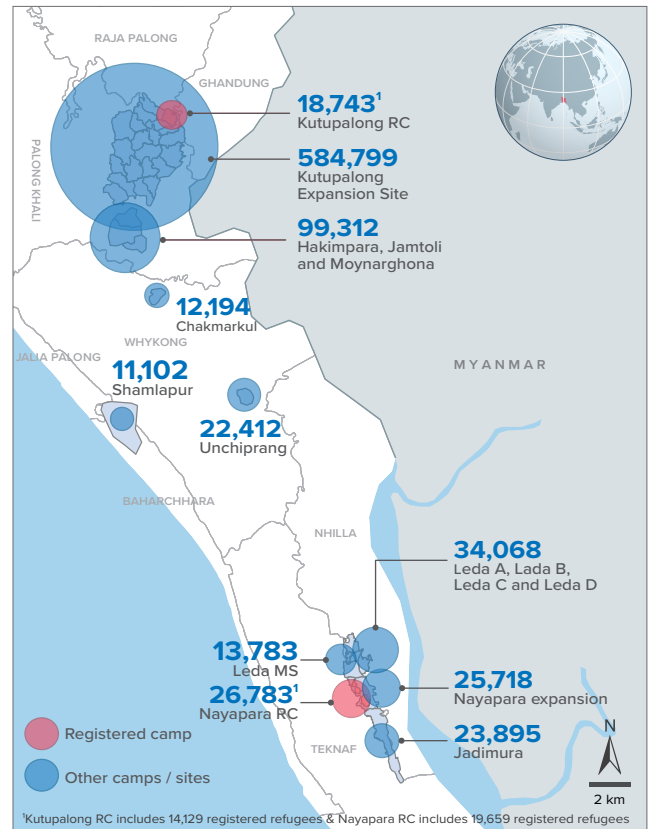


* Some refugees living in host communities and in certain locations beyond the camp boundaries may not have been counted.

Demography



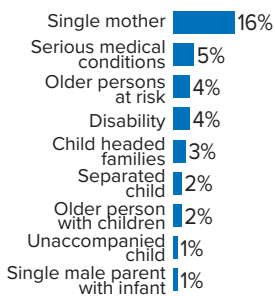
Refugee population density



The boundaries and names shown and the designations used on this map do not imply official endorsement or acceptance by the United Nations.

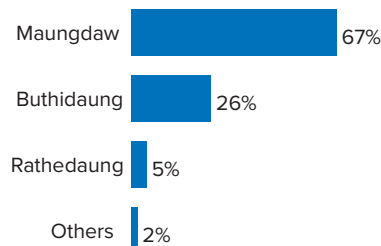
Specific needs

31% of the families have been identified with at least one protection vulnerability*



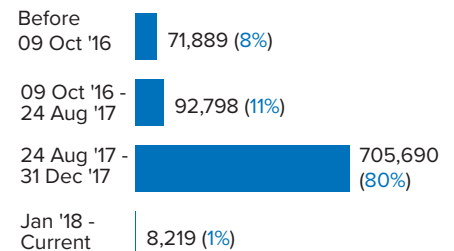
Place of origin

67% of the Rohingya refugees comes from Maungdaw Township



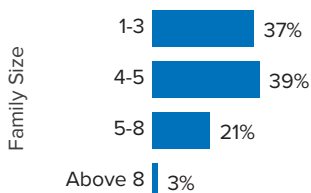
Period of arrival

80% of current population arrived between Aug. and Dec 2017



Family size breakdown

39% of the families have a standard family size of 4-5 persons



Linking exercise

The Linking Exercise, conducted from December 2017 until February 2018, was a collaborative effort between the Government of Bangladesh and the United Nations High Commissioner for Refugees that aimed to merge the family based Rohingya population data collected through the Family Counting Exercise with attributes of the individual Rohingya population data collected by the Ministry of Home Affairs.

The exercise was conducted with a view to creating a unified dataset with individual data grouped into families which will be used to better protect and assist families.

*Figures are the percentage of total families with at least one person with a specific need. More than one specific need may be present within one family.

Age and gender breakdown by camp/site

Camp/Site	New born female	New born male	1-4 Children female	1-4 Children male	5-11 Children female	5-11 Children male	12-17 Children female	12-17 Children male	18-59 Adult female	18-59 Adult male	60+ Elderly female	60+ Elderly male	Total Families	Total Individuals
Camp 15	898	839	3,293	3,428	5,014	5,204	3,203	3,416	10,782	8,588	837	852	10,459	46,354
Camp 13	703	749	3,039	3,138	4,444	4,707	2,728	2,796	9,587	7,616	735	677	9,587	40,919
Camp 1W	764	763	2,931	2,951	4,406	4,455	2,685	2,783	9,601	7,721	849	749	9,374	40,658
Camp 7	731	750	3,082	3,170	4,329	4,557	2,721	2,669	9,404	7,424	738	674	9,557	40,249
Camp 1E	658	736	2,779	2,944	4,248	4,463	2,642	2,765	9,257	7,736	803	693	9,139	39,724
Camp 3	684	736	3,038	3,090	4,183	4,418	2,524	2,687	9,361	7,311	679	588	9,127	39,299
Camp 9	620	563	2,783	2,805	4,012	4,040	2,492	2,505	8,545	6,944	716	691	8,658	36,716
Camp 10	669	654	2,720	2,861	3,558	3,945	2,246	2,212	8,196	6,413	644	556	8,066	34,674
Camp 8E	528	531	2,425	2,512	3,592	3,707	2,454	2,395	7,866	6,296	593	587	7,730	33,486
Camp 11	584	623	2,473	2,529	3,533	3,759	2,228	2,304	7,623	6,219	562	515	7,483	32,952
Camp 8W	559	535	2,647	2,606	3,503	3,692	2,078	2,193	7,766	6,195	623	551	7,574	32,948
Camp 14	556	579	2,248	2,486	3,319	3,667	2,235	2,231	7,157	5,753	593	520	6,900	31,344
Camp 4	556	591	2,259	2,415	3,369	3,514	1,945	1,937	7,132	5,559	482	382	7,410	30,141
Camp 2E	525	500	2,110	2,168	3,092	3,383	1,722	1,768	6,743	5,098	500	428	6,706	28,037
Camp 18	486	520	2,272	2,340	2,971	3,092	1,855	1,749	6,629	5,188	363	382	6,810	27,847
Nayapara RC*	90	89	1,546	1,616	2,935	3,050	2,213	2,240	7,158	4,976	454	416	5,720	26,783
Camp 5	458	493	2,024	2,106	2,834	2,906	1,586	1,663	6,123	4,766	464	421	6,209	25,844
Nayapara Exp	438	365	1,836	1,907	2,935	3,180	1,964	1,813	6,206	4,303	419	352	5,902	25,718
Camp 6	517	444	1,998	2,112	2,694	2,859	1,447	1,548	5,727	4,531	427	386	5,748	24,690
Camp 2W	404	399	1,795	1,913	2,766	3,028	1,539	1,548	5,730	4,579	484	362	5,577	24,547
Jadimura	394	369	1,891	1,889	2,794	3,001	1,646	1,707	5,574	3,958	348	324	5,313	23,895
Unchiprang	413	387	1,613	1,808	2,573	2,644	1,696	1,688	4,877	4,003	378	332	4,619	22,412
Camp 12	370	359	1,620	1,703	2,371	2,657	1,577	1,535	5,119	3,999	407	352	4,896	22,069
Camp 16	434	394	1,591	1,673	2,332	2,545	1,523	1,442	4,968	4,006	383	323	4,830	21,614
Camp 19	314	302	1,429	1,514	2,049	2,271	1,322	1,358	4,397	3,438	314	274	4,354	18,982
Kutupalong RC*	86	73	1,091	1,260	1,997	2,128	1,481	1,439	4,792	3,817	295	284	3,760	18,743
Leda A	255	259	1,100	1,154	1,566	1,701	1,009	987	3,357	2,489	219	209	3,379	14,305
Leda MS	198	188	839	909	1,761	1,786	925	1,009	3,247	2,573	211	137	3,035	13,783
Chakmarkul	224	216	887	956	1,324	1,402	758	810	2,931	2,374	180	132	2,978	12,194
Shamlapur	183	202	818	853	1,472	1,507	637	656	2,723	1,714	173	164	2,693	11,102
Leda D	143	176	760	733	1,170	1,299	785	722	2,346	1,680	177	109	2,281	10,100
Camp 17	153	183	842	864	1,103	1,170	647	624	2,399	1,816	142	149	2,384	10,092
Leda C	104	96	483	533	821	816	421	465	1,624	1,088	116	98	1,617	6,665
No Camp**	90	101	450	490	595	604	423	382	1,367	1,083	113	89	1,347	5,787
Leda B	45	50	210	246	328	311	246	217	735	496	68	46	712	2,998
Camp 20	22	13	77	60	116	107	48	53	226	177	12	14	231	925
Total	14,856	14,827	64,999	67,742	96,109	101,575	59,651	60,316	207,275	161,927	15,501	13,818	202,165	878,596

*Kutupalong RC includes 14,129 registered refugees & Nayapara RC includes 19,659 registered refugees

**This represents refugees residing outside formal camp / site boundaries

Population figures by period of arrival

Arrival Period	Before 09 Oct 2016		09 Oct 2016 - 24 Aug 2017		25 Aug 2017 - 31 Dec 2017		01 Jan 2018 - Current date		Total families	Total individuals
Camp / Site	Total families	Total individuals	Total families	Total individuals	Total families	Total individuals	Total families	Total individuals		
Camp 15	11	47	717	3,173	9,730	43,126	1	8	10,459	46,354
Camp 13	11	42	791	3,455	8,784	37,418	1	4	9,587	40,919
Camp 1W	19	75	1,036	4,442	8,306	36,097	13	44	9,374	40,658
Camp 7	121	537	1,063	4,599	8,360	35,055	13	58	9,557	40,249
Camp 1E	35	168	1,605	6,897	7,483	32,601	16	58	9,139	39,724
Camp 3	15	71	955	4,197	8,147	34,989	10	42	9,127	39,299
Camp 9	89	349	2,147	8,740	6,420	27,619	2	8	8,658	36,716
Camp 10	10	45	628	2,678	7,421	31,926	7	25	8,066	34,674
Camp 8E	38	156	897	3,936	6,785	29,352	10	42	7,730	33,486
Camp 11	1	3	1,148	5,105	6,334	27,844	-	-	7,483	32,952
Camp 8W	23	106	662	2,899	6,839	29,761	50	182	7,574	32,948
Camp 14	7	25	597	2,774	6,295	28,540	1	5	6,900	31,344
Camp 4	16	73	283	1,166	6,916	28,067	195	835	7,410	30,141
Camp 2E	3,192	13,527	1,642	6,968	1,872	7,542	-	-	6,706	28,037
Camp 18	14	60	173	717	6,601	26,989	22	81	6,810	27,847
Nayapara RC*	3,754	19,862	249	970	1,693	5,896	24	55	5,720	26,783
Camp 5	20	77	552	2,359	5,633	23,390	4	18	6,209	25,844
Nayapara Exp	46	236	493	2,203	5,338	23,179	25	100	5,902	25,718
Camp 6	57	257	1,081	4,872	4,601	19,531	9	30	5,748	24,690
Camp 2W	1,819	8,359	1,372	5,980	2,364	10,124	22	84	5,577	24,547
Jadimura	50	242	495	2,318	4,452	19,961	316	1,374	5,313	23,895
Unchiprang	5	33	211	1,024	4,402	21,352	1	3	4,619	22,412
Camp 12	3	15	237	1,076	4,652	20,958	4	20	4,896	22,069
Camp 16	5	25	282	1,251	4,543	20,338	-	-	4,830	21,614
Camp 19	-	-	373	1,693	3,957	17,180	24	109	4,354	18,982
Kutupalong RC*	2,932	15,462	195	777	624	2,480	9	24	3,760	18,743
Leda A	10	38	330	1,447	3,031	12,790	8	30	3,379	14,305
Leda MS	2,092	10,155	168	652	775	2,976	-	-	3,035	13,783
Chakmarkul	11	48	151	657	2,765	11,295	51	194	2,978	12,194
Shamlapur	260	1,195	287	1,222	2,130	8,616	16	69	2,693	11,102
Leda D	53	270	255	1,133	1,970	8,684	3	13	2,281	10,100
Camp 17	6	26	79	311	1,315	5,456	984	4,299	2,384	10,092
Leda C	59	242	100	402	1,455	6,012	3	9	1,617	6,665
No Camp**	11	54	147	640	1,133	4,833	56	260	1,347	5,787
Leda B	1	9	15	60	693	2,919	3	10	712	2,998
Camp 20	-	-	1	5	196	794	34	126	231	925
Grand Total	14,796	71,889	21,417	92,798	164,015	705,690	1,937	8,219	202,165	878,596

*Kutupalong RC includes 14,129 registered refugees & Nayapara RC includes 19,659 registered refugees

**This represents refugees residing outside formal camp / site boundaries

Population figures by specific needs

Camp/Site	Child headed families	Families with separated children	Families with unaccompanied children	Families with a person with disability	Families with older person at risk	Families with older person at risk with children	Families with people with serious medical condition	Single male parents with infants	Single female parent	Families with people with specific needs
Camp 15	252	219	56	319	523	188	409	60	1,538	2,984
Camp 1E	289	171	43	558	455	327	485	56	1,132	2,898
Camp 7	176	229	29	372	385	252	476	113	1,275	2,858
Nayapara RC	136	174	41	604	170	51	1,202	34	1,199	2,836
Camp 13	312	251	79	310	395	208	344	64	1,430	2,761
Camp 1W	125	163	33	399	444	215	452	66	1,260	2,751
Camp 3	243	198	62	373	350	293	330	65	1,435	2,667
Camp 10	325	137	86	428	374	270	552	102	1,129	2,621
Camp 9	388	153	75	387	396	267	497	100	1,071	2,549
Camp 8E	373	171	78	374	397	261	442	91	1,137	2,500
Camp 4	264	239	88	183	289	196	272	102	1,428	2,456
Camp 18	208	157	62	251	227	173	313	85	1,184	2,170
Camp 11	235	176	64	294	314	166	251	72	1,139	2,087
Camp 2E	209	154	49	255	238	189	308	49	1,105	2,069
Camp 5	215	167	73	214	292	173	212	64	1,127	2,012
Nayapara Exp	123	103	39	183	229	67	142	48	1,305	1,972
Camp 14	166	121	47	189	322	137	309	42	971	1,870
Camp 6	159	166	44	226	242	127	322	40	814	1,816
Jadimura	102	96	21	169	166	63	110	50	1,248	1,779
Camp 8W	238	93	39	254	273	161	300	80	754	1,712
Camp 2W	95	105	17	283	231	112	262	58	753	1,633
Kutupalong RC	69	61	16	350	105	39	771	9	569	1,584
Camp 12	108	81	34	144	202	104	139	34	785	1,356
Camp 16	108	92	22	171	202	82	162	37	710	1,322
Camp 19	133	117	30	181	208	80	115	44	688	1,311
Leda A	113	82	37	113	124	66	135	19	708	1,188
Unchiprang	95	70	19	160	156	77	153	16	581	1,118
Shamlapur	58	50	12	75	99	43	70	11	756	1,028
Chakmarkul	84	64	23	112	91	33	109	34	492	870
Leda MS	74	52	28	129	100	31	80	17	483	845
Leda D	74	42	25	72	78	37	86	18	529	795
Camp 17	56	74	15	78	97	48	73	22	443	751
Leda C	62	50	9	69	74	26	60	10	438	665
No Camp	50	37	11	52	100	18	68	5	220	450
Leda B	14	9	6	20	34	13	14	3	191	262
Camp 20	5	5	3	6	8	3	4	-	26	51
Total	5,736	4,329	1,415	8,357	8,390	4,596	10,029	1,720	32,053	62,597

Population density by camps in KTP

Using GIS technology, polygons of the camps were established. The GPS coordinates of each family were then mapped into the polygons, in order to determine the total number of families and individuals within each camp.

Based on the high quality drone imagery and field mapping conducted by Site Planning unit, the total usable area and non-usable area was calculated jointly by UNHCR with IOM. While the usable area refers to areas populated by refugees, the non-usable areas refers to flood and landslide prone areas.

Note: The recommended minimum surface area is 45 m² per person when planning a refugee camp (including kitchen / vegetable gardening space). However the actual surface area per person (excluding garden space) should not be less than 30 m² per person.

Camp	Total families	Total individuals	Useable area (sqm)	% useable area	Unuseable area (sqm)	Average usable area per person (sqm)
Camp 6	5,748	24,690	15,549.13	4%	346,464.55	0.63
Camp 7	9,557	40,249	187,746.25	26%	526,339.25	4.67
Camp 18	6,810	27,847	215,867.55	29%	535,809.11	7.75
Camp 10	8,066	34,674	275,403.52	56%	220,741.93	7.94
Camp 8W	7,574	32,948	261,919.44	34%	510,261.66	7.95
Camp 2E	6,706	28,037	231,810.44	60%	157,511.49	8.27
Camp 11	7,483	32,952	291,155.08	62%	174,864.36	8.84
Camp 3	9,127	39,299	370,579.31	81%	89,175.01	9.43
Camp 9	8,658	36,716	364,589.86	56%	284,492.95	9.93
Camp 2W	5,577	24,547	251,214.12	63%	147,230.93	10.23
Camp 17	2,384	10,092	105,265.74	12%	773,225.50	10.43
Camp 1W	9,374	40,658	453,408.96	85%	80,984.99	11.15
Camp 4	7,410	30,141	358,275.43	32%	765,423.70	11.89
Camp 5	6,209	25,844	312,596.39	51%	302,700.82	12.10
Camp 8E	7,730	33,486	433,694.96	45%	522,855.70	12.95
Camp 13	9,587	40,919	566,311.36	76%	180,248.89	13.84
Camp 1E	9,139	39,724	608,228.12	96%	25,354.87	15.31
Camp 19	4,354	18,982	340,459.65	48%	373,588.12	17.94
Kutupalong RC*	3,760	18,743	340,824.72	89%	40,514.96	18.18
Camp 12	4,896	22,069	487,402.76	77%	143,735.69	22.09
Camp 20	231	925	230,466.42	46%	268,065.66	249.15

*Kutupalong RC includes 14,129 registered refugees