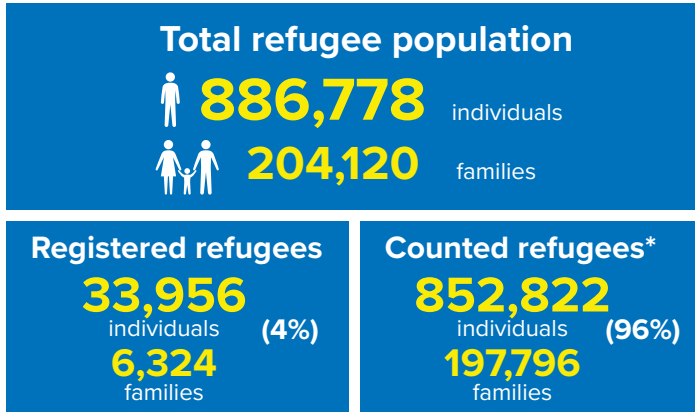
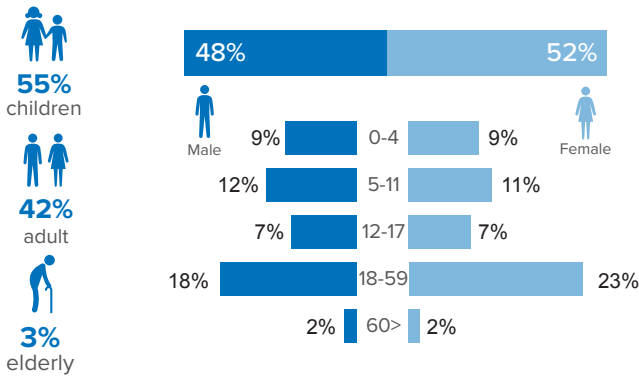


Refugee population figure

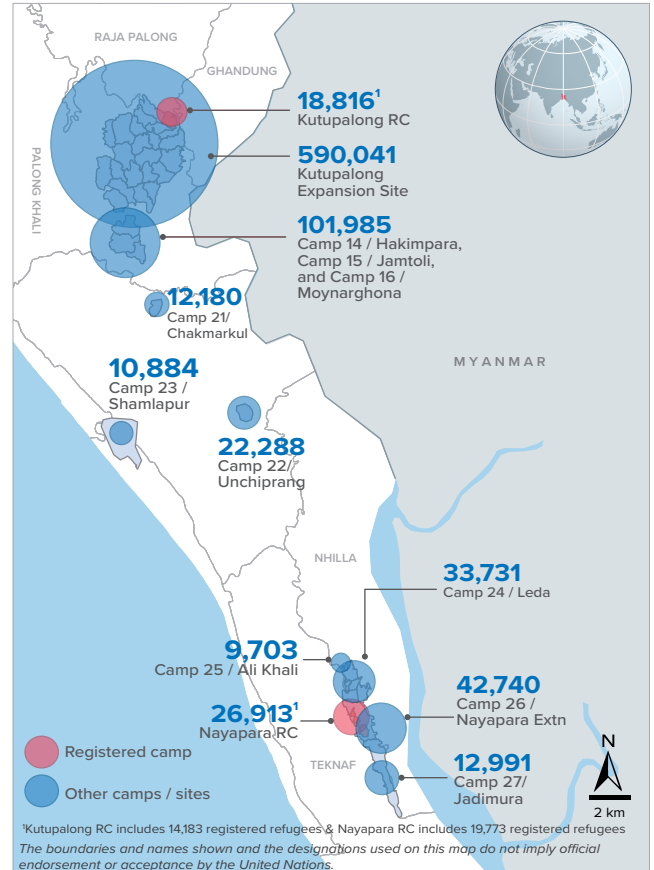


* Some refugees living in host communities and in certain locations beyond the camp boundaries may not have been counted.

Demography

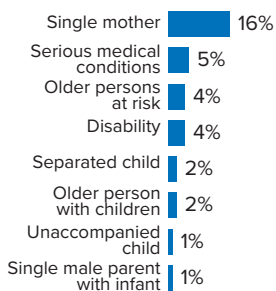


Refugee population density



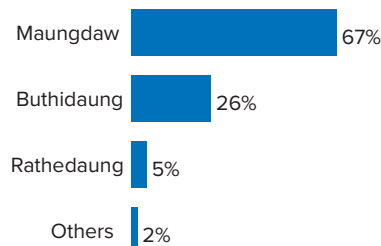
Specific needs

31% of the families have been identified with at least one protection vulnerability*



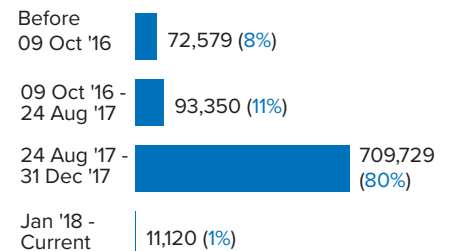
Place of origin

67% of the Rohingya refugees comes from Maungdaw Township



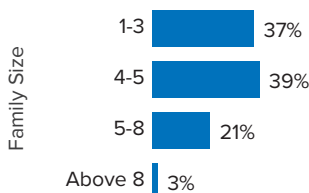
Period of arrival

80% of current population arrived between Aug. and Dec 2017



Family size breakdown

39% of the families have a standard family size of 4-5 persons



Linking exercise

The Linking Exercise, conducted from December 2017 until February 2018, was a collaborative effort between the Government of Bangladesh and the United Nations High Commissioner for Refugees that aimed to merge the family based Rohingya population data collected through the Family Counting Exercise with attributes of the individual Rohingya population data collected by the Ministry of Home Affairs.

The exercise was conducted with a view to creating a unified dataset with individual data grouped into families which will be used to better protect and assist families.

*Figures are the percentage of total families with at least one person with a specific need. More than one specific need may be present within one family.

Age and gender breakdown by camp/site

Camp	Infant female below 1	Infant male below 1	1-4 Children female	1-4 Children male	5-11 Children female	5-11 Children male	12-17 Children female	12-17 Children male	18-59 Adult female	18-59 Adult male	60+ Elderly female	60+ Elderly male	Total Families	Total Individuals
Camp 15	946	893	3,537	3,677	5,282	5,477	3,412	3,596	11,500	9,172	901	905	11,145	49,298
Camp 26	719	645	3,249	3,252	4,920	5,428	3,102	2,912	10,203	7,069	661	580	9,752	42,740
Camp 1W	762	762	2,931	2,948	4,413	4,470	2,687	2,779	9,614	7,732	854	751	9,393	40,703
Camp 13	703	749	3,018	3,110	4,414	4,676	2,714	2,786	9,537	7,573	734	673	9,538	40,687
Camp 1E	659	733	2,779	2,934	4,226	4,445	2,632	2,760	9,254	7,717	789	689	9,124	39,617
Camp 3	684	730	3,023	3,081	4,178	4,399	2,508	2,679	9,321	7,290	681	586	9,092	39,160
Camp 7	708	713	2,967	3,081	4,183	4,405	2,620	2,568	9,072	7,131	711	641	9,215	38,800
Camp 9	622	561	2,771	2,791	3,983	4,038	2,484	2,511	8,531	6,924	715	692	8,642	36,623
Camp 24	513	524	2,290	2,504	4,047	4,169	2,325	2,415	8,043	5,933	547	421	7,804	33,731
Camp 10	645	620	2,610	2,734	3,431	3,781	2,161	2,121	7,822	6,153	610	532	7,709	33,220
Camp 8E	525	522	2,389	2,482	3,549	3,630	2,425	2,356	7,738	6,217	576	577	7,609	32,986
Camp 8W	558	537	2,651	2,591	3,479	3,672	2,066	2,169	7,724	6,158	613	545	7,535	32,763
Camp 11	568	601	2,426	2,468	3,464	3,673	2,196	2,256	7,461	6,103	550	506	7,331	32,272
Camp 14	545	575	2,229	2,471	3,296	3,643	2,221	2,206	7,101	5,707	585	518	6,843	31,097
Camp 4	558	590	2,277	2,433	3,396	3,544	1,957	1,951	7,171	5,606	486	385	7,460	30,354
Camp 2E	532	503	2,157	2,214	3,141	3,426	1,733	1,785	6,844	5,145	502	430	6,816	28,412
Camp 18	484	516	2,277	2,334	2,973	3,087	1,852	1,746	6,611	5,177	364	379	6,790	27,800
Nayapara RC*	87	91	1,580	1,642	2,930	3,036	2,227	2,280	7,169	4,997	457	417	5,733	26,913
Camp 5	450	485	1,995	2,079	2,791	2,854	1,556	1,642	6,044	4,700	457	416	6,125	25,469
Camp 2W	407	406	1,833	1,956	2,820	3,073	1,552	1,569	5,842	4,638	489	372	5,689	24,957
Camp 6	517	446	2,004	2,114	2,696	2,864	1,448	1,548	5,731	4,539	427	387	5,756	24,721
Camp 22	409	384	1,604	1,794	2,560	2,624	1,690	1,681	4,854	3,978	378	332	4,592	22,288
Camp 12	370	356	1,608	1,696	2,357	2,634	1,567	1,528	5,081	3,973	404	353	4,856	21,927
Camp 16	434	396	1,589	1,671	2,328	2,538	1,522	1,438	4,966	4,003	383	322	4,828	21,590
Camp 19	327	314	1,533	1,613	2,153	2,395	1,373	1,412	4,630	3,610	326	281	4,580	19,967
Kutupalong RC*	90	75	1,099	1,256	1,997	2,144	1,507	1,444	4,798	3,832	294	280	3,760	18,816
Camp 17	214	257	1,218	1,215	1,597	1,663	911	900	3,394	2,597	215	208	3,386	14,389
Camp 27	222	194	1,004	1,070	1,544	1,540	924	957	3,007	2,164	197	168	2,888	12,991
Camp 21	227	210	897	953	1,337	1,404	758	799	2,932	2,346	184	133	2,982	12,180
Camp 23	182	200	796	824	1,446	1,472	629	648	2,668	1,689	171	159	2,642	10,884
Camp 25	141	160	725	716	1,133	1,217	760	700	2,254	1,611	172	114	2,185	9,703
Camp 20	80	91	328	380	509	551	242	279	1,145	812	78	66	1,114	4,561
No camp**	76	71	354	374	503	540	280	307	1,043	809	83	66	1,047	4,506
Camp 20 Extension	8	10	48	53	72	79	42	42	151	115	6	7	154	633
Camp 4 Extension	-	1	2	3	1	1	1	2	5	4	-	-	5	20
Total	14,972	14,921	65,798	68,514	97,149	102,592	60,084	60,772	209,261	163,224	15,600	13,891	204,120	886,778

*Kutupalong RC includes 14,183 registered refugees & Nayapara RC includes 19,773 registered refugees

**This represents refugees residing outside formal camp boundaries

Population figures by period of arrival

Arrival Period	Before 09 Oct 2016		09 Oct 2016 - 24 Aug 2017		25 Aug 2017 - 31 Dec 2017		01 Jan 2018 - Current date		Total Families	Total Individuals
Camp /	Total Families	Total Individuals	Total Families	Total Individuals	Total Families	Total Individuals	Total Families	Total Individuals		
Camp 15	11	47	768	3,405	10,365	45,838	1	8	11,145	49,298
Camp 26	72	352	850	3,794	8,385	36,667	445	1,927	9,752	42,740
Camp 13	11	42	788	3,445	8,738	37,196	1	4	9,538	40,687
Camp 1W	22	86	1,043	4,471	8,309	36,082	19	64	9,393	40,703
Camp 7	121	533	1,057	4,576	8,001	33,534	36	157	9,215	38,800
Camp 1E	33	159	1,608	6,902	7,462	32,481	21	75	9,124	39,617
Camp 3	16	76	951	4,186	8,113	34,845	12	53	9,092	39,160
Camp 9	89	349	2,137	8,695	6,414	27,571	2	8	8,642	36,623
Camp 24	2,181	10,561	527	2,224	5,080	20,894	16	52	7,804	33,731
Camp 10	8	39	605	2,582	7,089	30,574	7	25	7,709	33,220
Camp 8E	38	156	890	3,902	6,664	28,856	17	72	7,609	32,986
Camp 8W	23	106	656	2,862	6,799	29,584	57	211	7,535	32,763
Camp 4	17	81	289	1,190	6,953	28,250	201	833	7,460	30,354
Camp 11	1	3	1,120	4,969	6,209	27,298	1	2	7,331	32,272
Camp 14	7	25	592	2,745	6,238	28,298	6	29	6,843	31,097
Camp 2E	3,222	13,624	1,664	7,033	1,921	7,724	9	31	6,816	28,412
Camp 18	15	63	169	699	6,582	26,951	24	87	6,790	27,800
Camp 5	23	90	541	2,309	5,552	23,038	9	32	6,125	25,469
Camp 6	57	257	1,079	4,863	4,608	19,558	12	43	5,756	24,721
Nayapara RC*	3,752	19,963	252	977	1,693	5,867	36	106	5,733	26,913
Camp 2W	1,830	8,398	1,381	6,016	2,440	10,405	38	138	5,689	24,957
Camp 12	3	15	236	1,074	4,613	20,818	4	20	4,856	21,927
Camp 16	5	25	282	1,249	4,541	20,316	-	-	4,828	21,590
Camp 22	4	31	206	1,001	4,381	21,253	1	3	4,592	22,288
Camp 19	1	4	381	1,723	4,137	17,962	61	278	4,580	19,967
Kutupalong RC*	2,928	15,504	194	768	628	2,516	10	28	3,760	18,816
Camp 17	23	105	136	554	2,140	8,967	1,087	4,763	3,386	14,389
Camp 21	12	53	145	632	2,720	11,109	105	386	2,982	12,180
Camp 27	29	142	259	1,213	2,470	11,041	130	595	2,888	12,991
Camp 23	254	1,171	284	1,210	2,101	8,491	3	12	2,642	10,884
Camp 25	18	90	254	1,133	1,909	8,461	4	19	2,185	9,703
Camp 20	50	231	72	322	862	3,517	130	491	1,114	4,561
No camp**	36	158	136	582	829	3,567	46	199	1,047	4,506
Camp 20 Extension	10	40	13	44	44	180	87	369	154	633
Camp 4 Extension	-	-	-	-	5	20	-	-	5	20
Grand Total	14,922	72,579	21,565	93,350	164,995	709,729	2,638	11,120	204,120	886,778

*Kutupalong RC includes 14,183 registered refugees & Nayapara RC includes 19,773 registered refugees

**This represents refugees residing outside formal camp boundaries

Population figures by specific needs

Camp	Families with separated children	Families with unaccompanied children	Families with a person with disability	Families with older person at risk	Families with older person at risk with children	Families with people with serious medical condition	Single male parents with infants	Single female parent	Families with people with specific needs
Camp 26	177	55	290	371	115	230	81	2,241	3,333
Camp 15	237	60	353	589	197	463	63	1,612	3,202
Camp 1E	171	43	553	451	325	486	57	1,140	2,897
Nayapara RC	177	41	608	168	51	1,203	35	1,198	2,836
Camp 7	225	29	355	363	244	461	105	1,256	2,764
Camp 1W	164	32	402	450	217	450	66	1,267	2,763
Camp 13	248	79	309	394	208	344	64	1,423	2,751
Camp 3	197	62	374	352	293	332	65	1,418	2,656
Camp 24	177	74	301	289	121	258	43	1,644	2,645
Camp 9	152	75	388	398	268	498	100	1,069	2,548
Camp 10	130	80	400	355	253	530	97	1,065	2,484
Camp 4	241	88	183	291	195	272	100	1,429	2,458
Camp 8E	168	77	366	390	253	434	88	1,108	2,447
Camp 18	157	62	247	228	171	309	83	1,182	2,159
Camp 2E	155	50	254	239	192	310	51	1,148	2,118
Camp 11	176	63	278	305	161	243	69	1,117	2,034
Camp 5	163	72	214	290	171	212	64	1,113	1,990
Camp 14	118	46	184	314	137	305	42	966	1,847
Camp 6	167	45	224	242	127	322	40	817	1,821
Camp 8W	89	38	249	272	159	293	80	745	1,692
Camp 2W	105	17	283	235	112	267	60	782	1,673
Kutupalong RC	60	15	349	105	39	768	10	574	1,586
Camp 19	119	32	184	211	79	116	44	729	1,361
Camp 12	80	34	143	201	104	138	34	772	1,340
Camp 16	92	22	171	201	81	162	37	711	1,322
Camp 22	70	17	159	156	77	154	16	580	1,115
Camp 17	98	19	119	135	69	102	34	614	1,059
Camp 23	50	12	75	96	43	69	11	742	1,010
Camp 27	49	13	93	76	33	49	21	678	943
Camp 21	66	23	109	94	32	108	34	510	893
Camp 25	38	23	75	84	36	87	18	501	766
Camp 20	16	12	61	45	30	49	12	208	378
No camp	23	10	40	57	15	27	9	196	341
Camp 20 Extension	-	1	1	4	1	-	2	23	33
Camp 4 Extension	-	-	1	-	-	-	-	1	1
Total	4,355	1,421	8,395	8,451	4,609	10,051	1,735	32,579	63,266

Population density by camps in KTP

Using GIS technology, polygons of the camps were established. The GPS coordinates of each family were then mapped into the polygons, in order to determine the total number of families and individuals within each camp.

Based on the high quality drone imagery and field mapping conducted by Site Planning unit, the total usable area and non-usable area was calculated jointly by UNHCR with IOM. While the usable area refers to areas populated by refugees, the non-usable areas refers to flood and landslide prone areas.

Note: The recommended minimum surface area is 45 m² per person when planning a refugee camp (including kitchen / vegetable gardening space). However the actual surface area per person (excluding garden space) should not be less than 30 m² per person.

Camp	Total Families	Total Individuals	Useable area (sqm)	% useable area	Unuseable area (sqm)	Average usable area per person (sqm)
Camp 6	5,756	24,721	15,549.13	4%	346,464.55	0.63
Camp 7	9,215	38,800	187,746.25	26%	526,339.25	4.84
Camp 17	3,386	14,389	105,265.74	12%	773,225.50	7.32
Camp 18	6,790	27,800	215,867.55	29%	535,809.11	7.77
Camp 8W	7,535	32,763	261,919.44	34%	510,261.66	7.99
Camp 2E	6,816	28,412	231,810.44	60%	157,511.49	8.16
Camp 10	7,709	33,220	275,403.52	56%	220,741.93	8.29
Camp 11	7,331	32,272	291,155.08	62%	174,864.36	9.02
Camp 3	9,092	39,160	370,579.30	81%	89,175.01	9.46
Camp 9	8,642	36,623	364,589.86	56%	284,492.95	9.96
Camp 2W	5,689	24,957	251,214.12	63%	147,230.93	10.07
Camp 1W	9,393	40,703	453,408.96	85%	80,984.99	11.14
Camp 4	7,460	30,354	358,275.42	32%	765,423.70	11.80
Camp 5	6,125	25,469	312,596.39	51%	302,700.82	12.27
Camp 8E	7,609	32,986	433,694.96	45%	522,855.70	13.15
Camp 13	9,538	40,687	566,311.36	76%	180,248.89	13.92
Camp 1E	9,124	39,617	608,228.12	96%	25,354.87	15.35
Camp 19	4,580	19,967	340,459.65	48%	373,588.12	17.05
Kutupalong RC*	3,760	18,816	340,824.72	89%	40,514.96	18.11
Camp 12	4,856	21,927	487,402.76	77%	143,735.69	22.23
Camp 20	1,114	4,561	230,466.42	46%	268,065.66	50.53

*Kutupalong RC includes 14,183 registered refugees