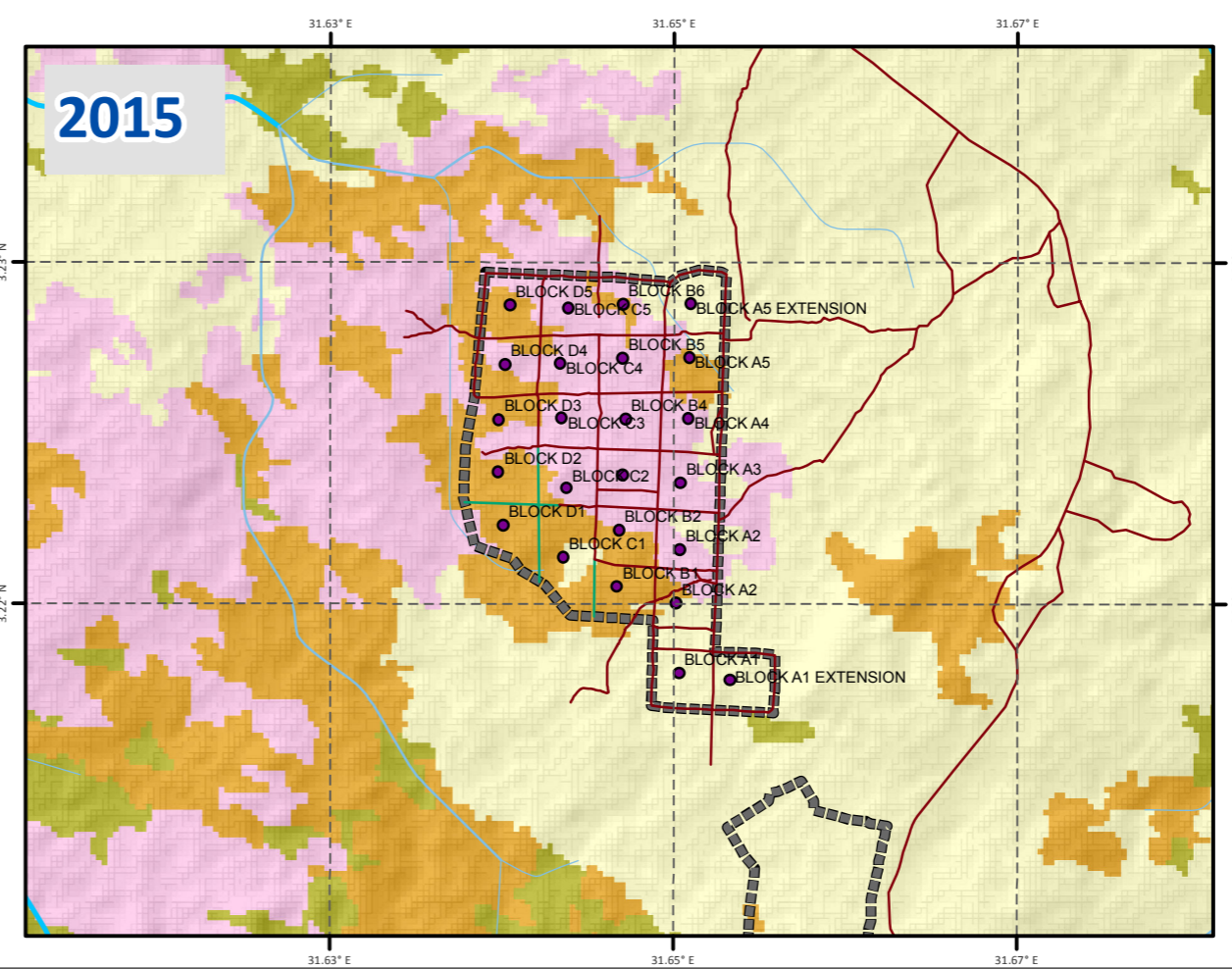
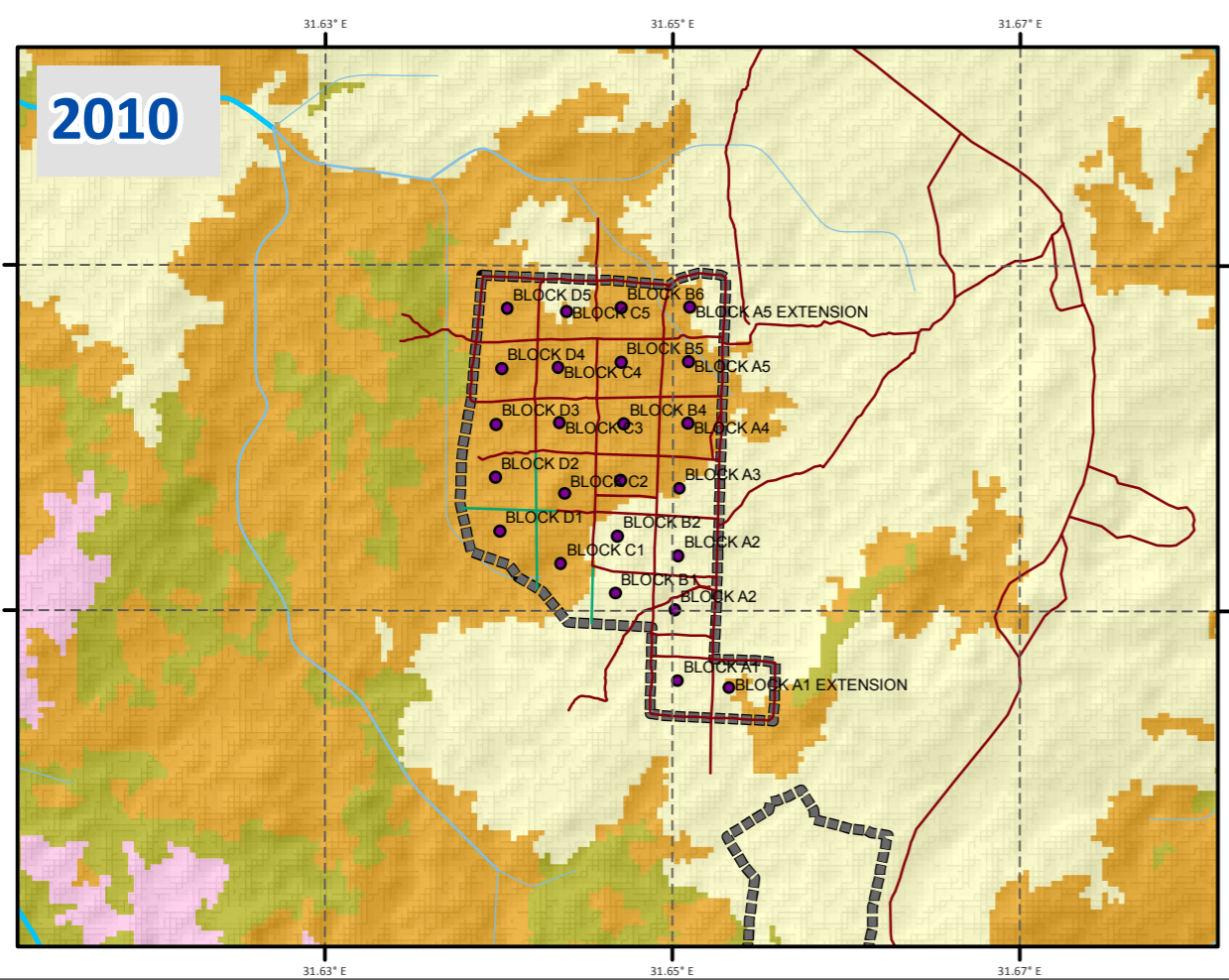
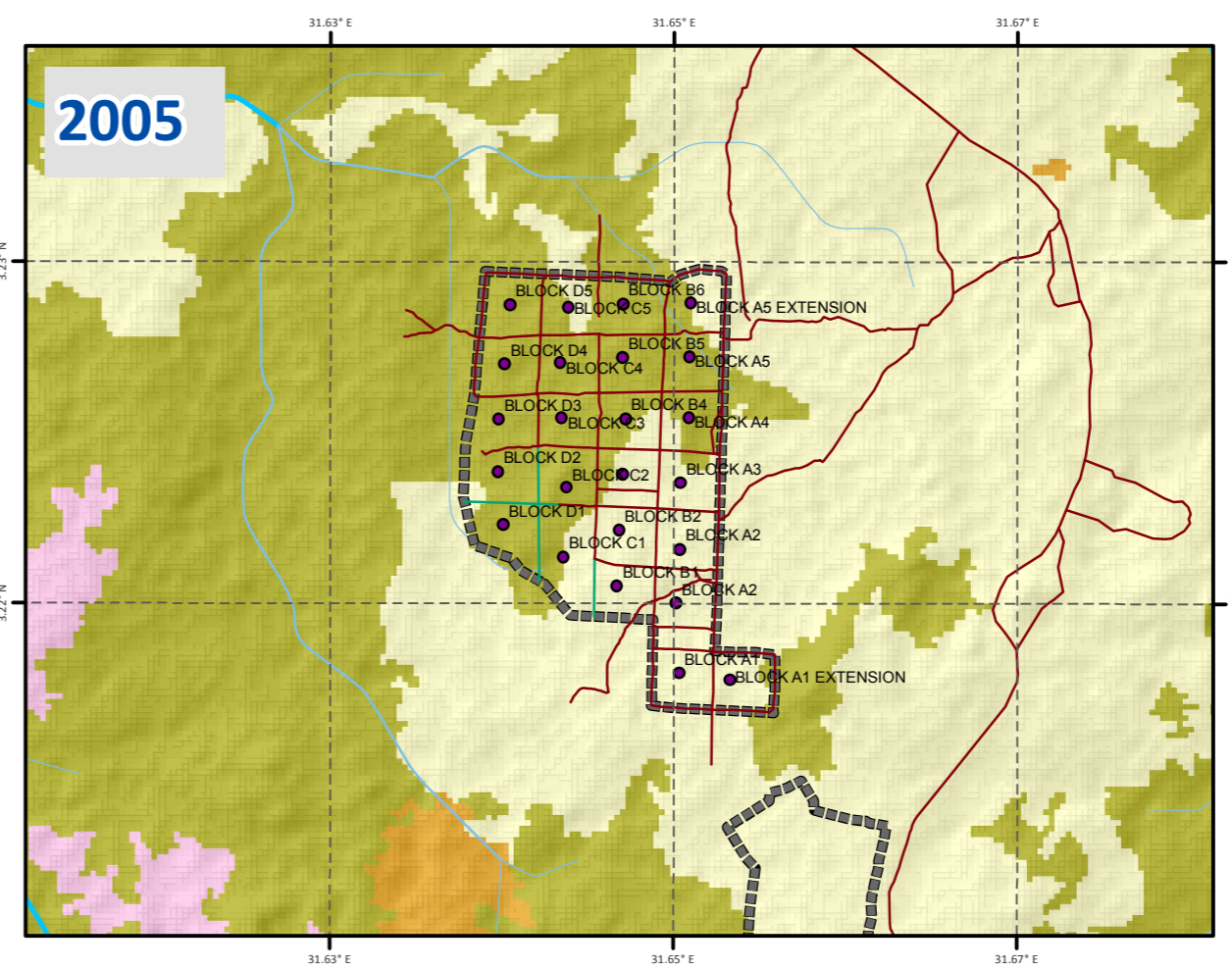
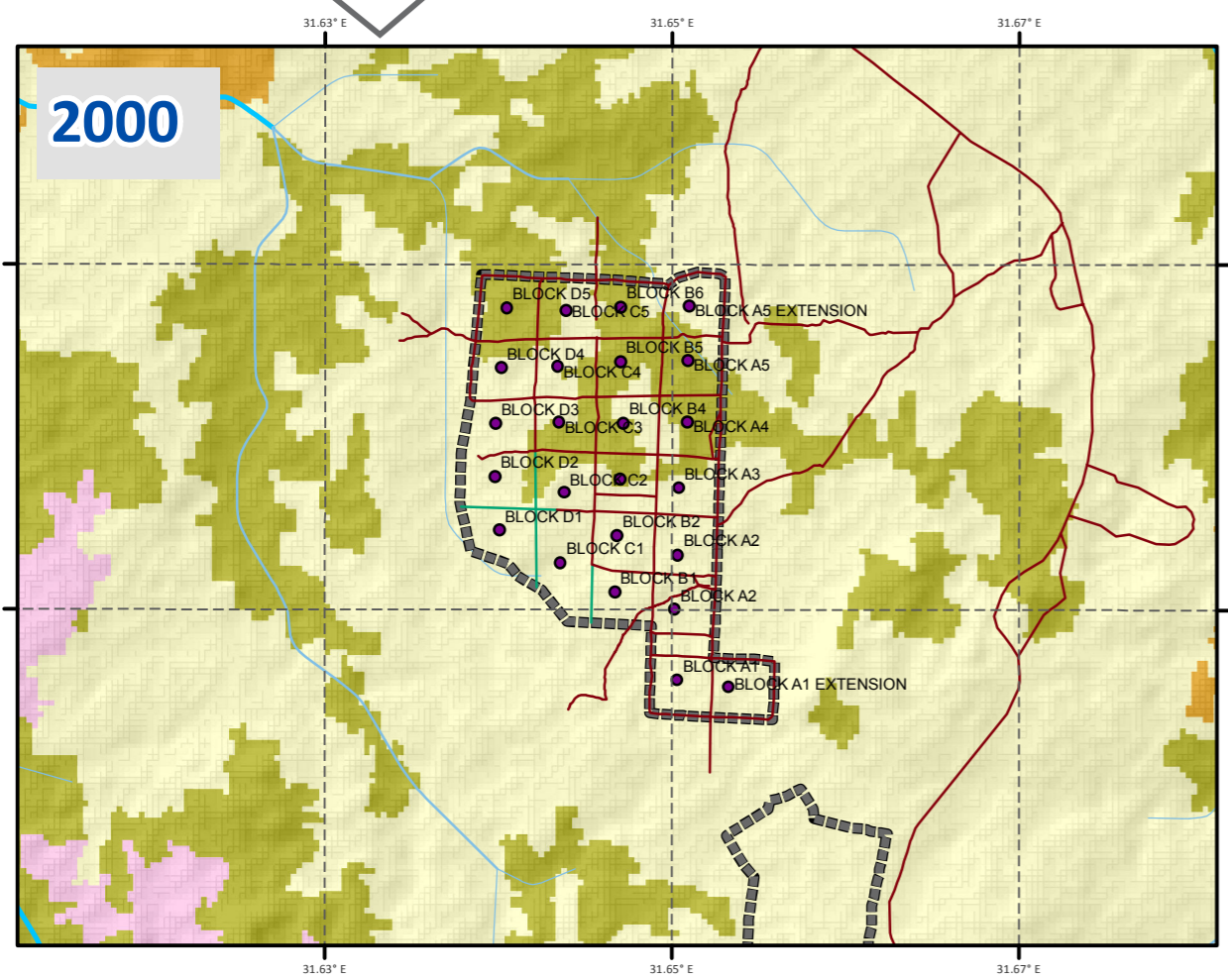


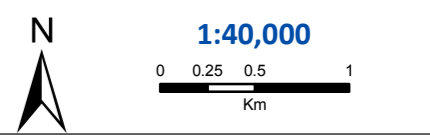


Principal settlement specifications
 District:Adjumani
 Subcounty:Okusijoni
 Date of establishment: 01 Jan 1997
 Surface Area: 263 hectares
 Current population:
 Family plot: 30m x 30m
 Number of blocks:
 Average Family size: 5

Coordinate System: GCS WGS 1984
 Datum: WGS 1984
 Units: Degree



- Maaji_III_AccessRoads
- Maaji_III_Blocks
- Settlement Boundary
- Plantation forest
- Tropical High Forest (THF)
- THF(degraded)
- Woodland
- Bush Scrubland
- Grassland
- Wet (Papyrus)
- Farmland (Subsistencs)
- Farm (Large scale)
- Built up area
- Open Water
- Impediments



LAYOUT FOR A3 LANDSCAPE
 The boundaries and names shown and the designations used on this map do not imply official endorsement or acceptance by the United nations. Sources: UNHCRS, UNCS, UBOS Feedback: IM team Uganda (ugakaimug@unhcr.org) | UNHCR BO KAMPALA | Creation Date: 15 Mar 2018