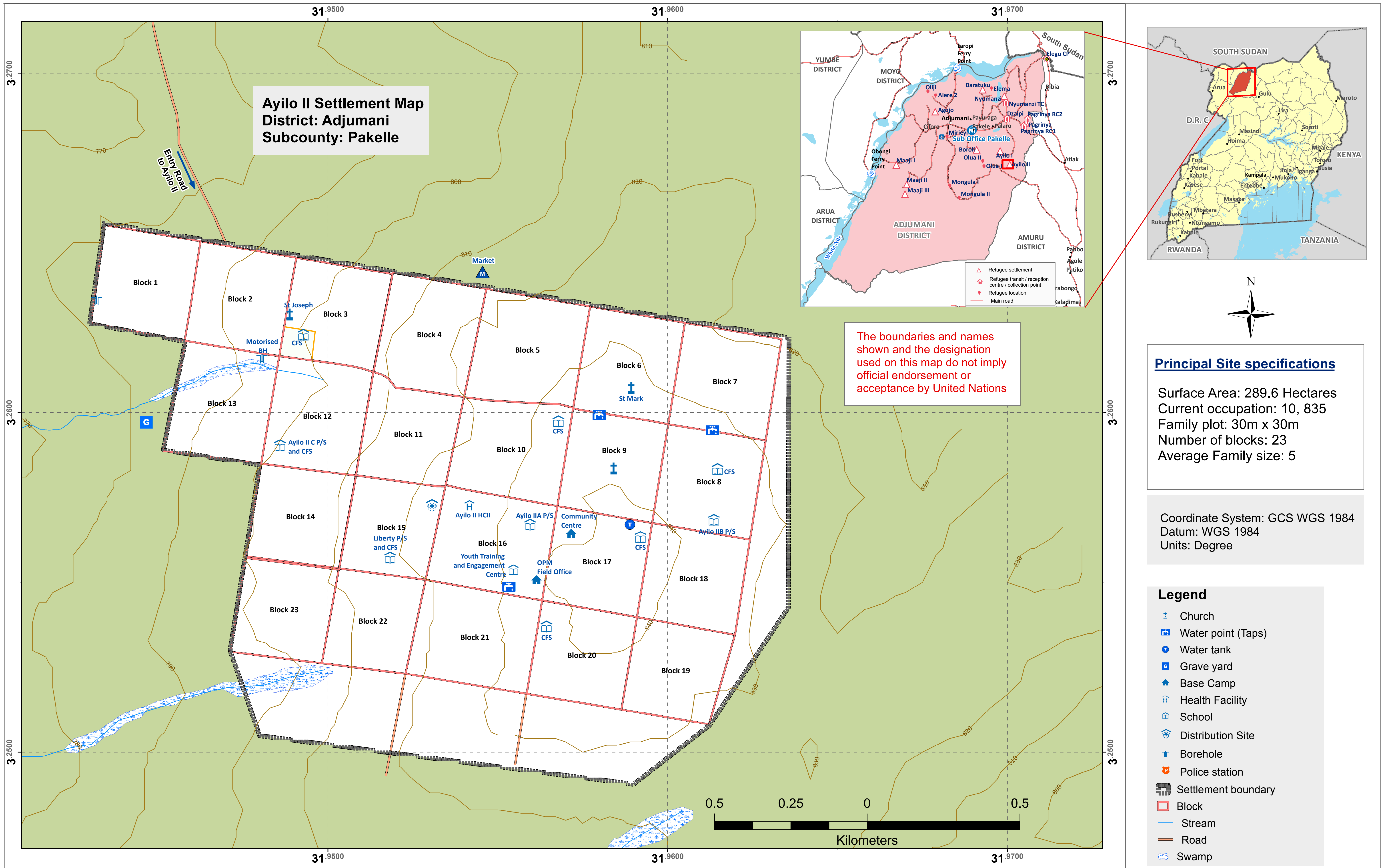


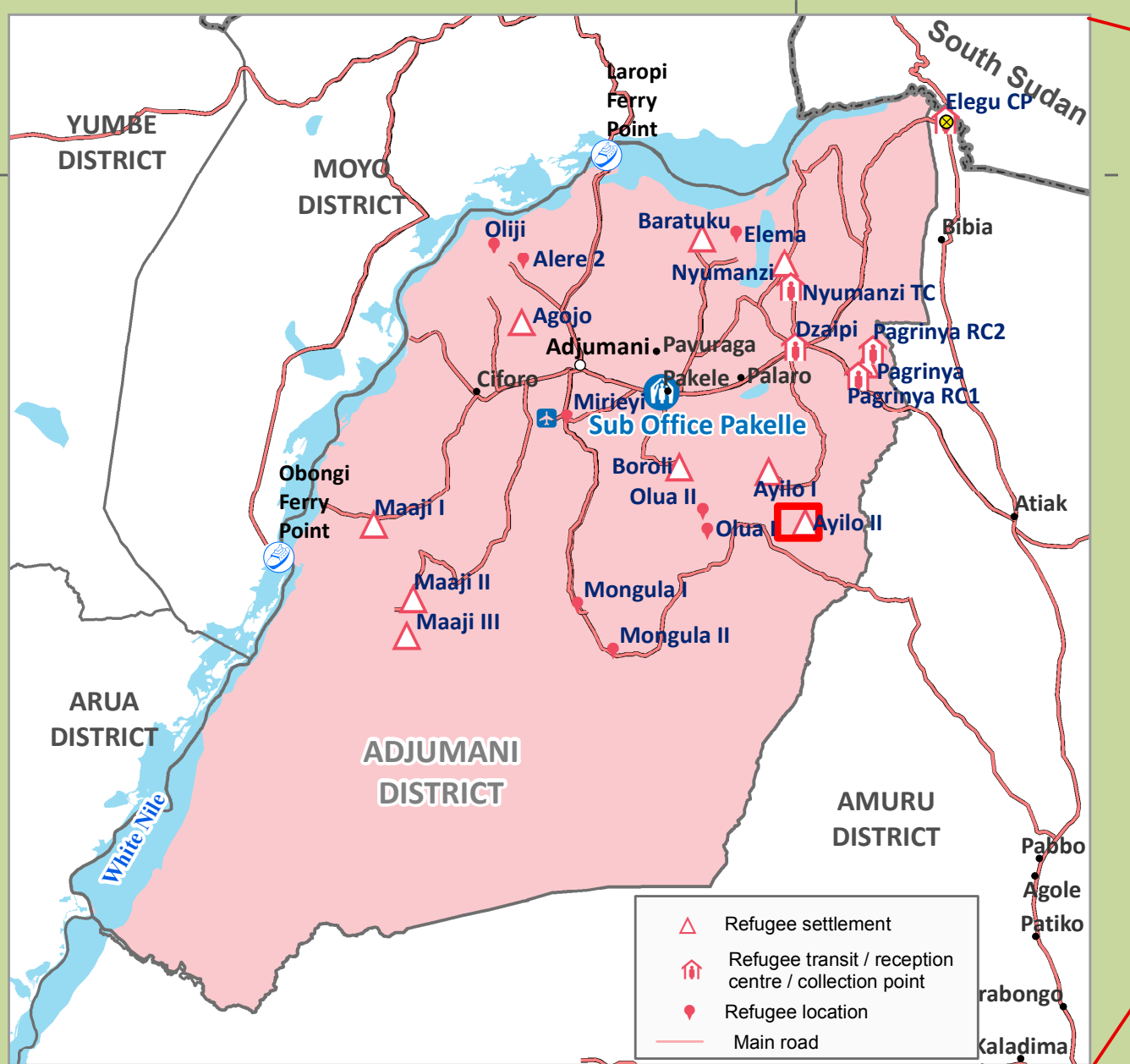
# AYILO II REFUGEE SETTLEMENT IN ADJUMANI DISTRICT

## SITE PLAN

AS OF 26TH MAY 2017



**Ayilo II Settlement Map**  
District: Adjumani  
Subcounty: Pakelle



The boundaries and names shown and the designation used on this map do not imply official endorsement or acceptance by United Nations

### Principal Site specifications

Surface Area: 289.6 Hectares  
Current occupation: 10, 835  
Family plot: 30m x 30m  
Number of blocks: 23  
Average Family size: 5

Coordinate System: GCS WGS 1984  
Datum: WGS 1984  
Units: Degree

### Legend

- Church
- Water point (Taps)
- Water tank
- Grave yard
- Base Camp
- Health Facility
- School
- Distribution Site
- Borehole
- Police station
- Settlement boundary
- Block
- Stream
- Road
- Swamp