



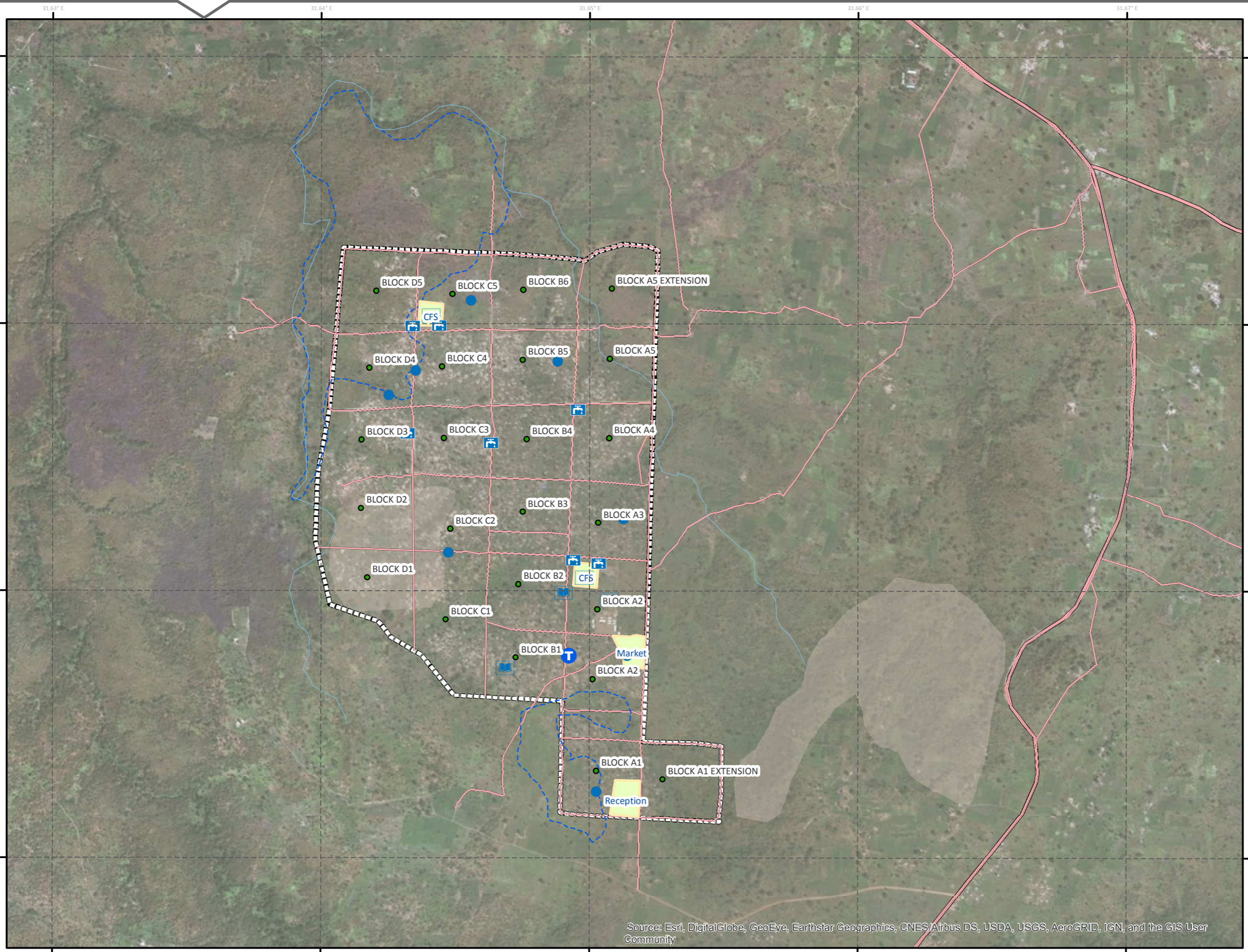
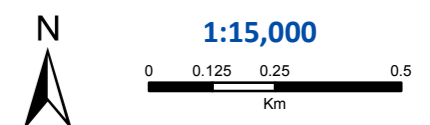
Principal settlement specifications

District: Adjumani
Subcounty: Okusijoni
Date of establishment: 1 Jan 1997
Surface Area: 261 hectares
Current population:
Family plot: 30m x 30m
Number of blocks: 24
Average Family size: 5

Coordinate System: GCS WGS 1984
Datum: WGS 1984
Units: Degree

Legend

- Borehole
- Church
- School/CFS/ECD
- TANK
- Water point
- Blocks
- River
- Wet Spot
- Rocks
- Access Roads
- major Roads
- Settlement



Source: Esri, DigitalGlobe, GeoEye, Earthstar Geographics, CNES/Airbus DS, USDA, USGS, AeroGRID, IGN, and the GIS User Community