



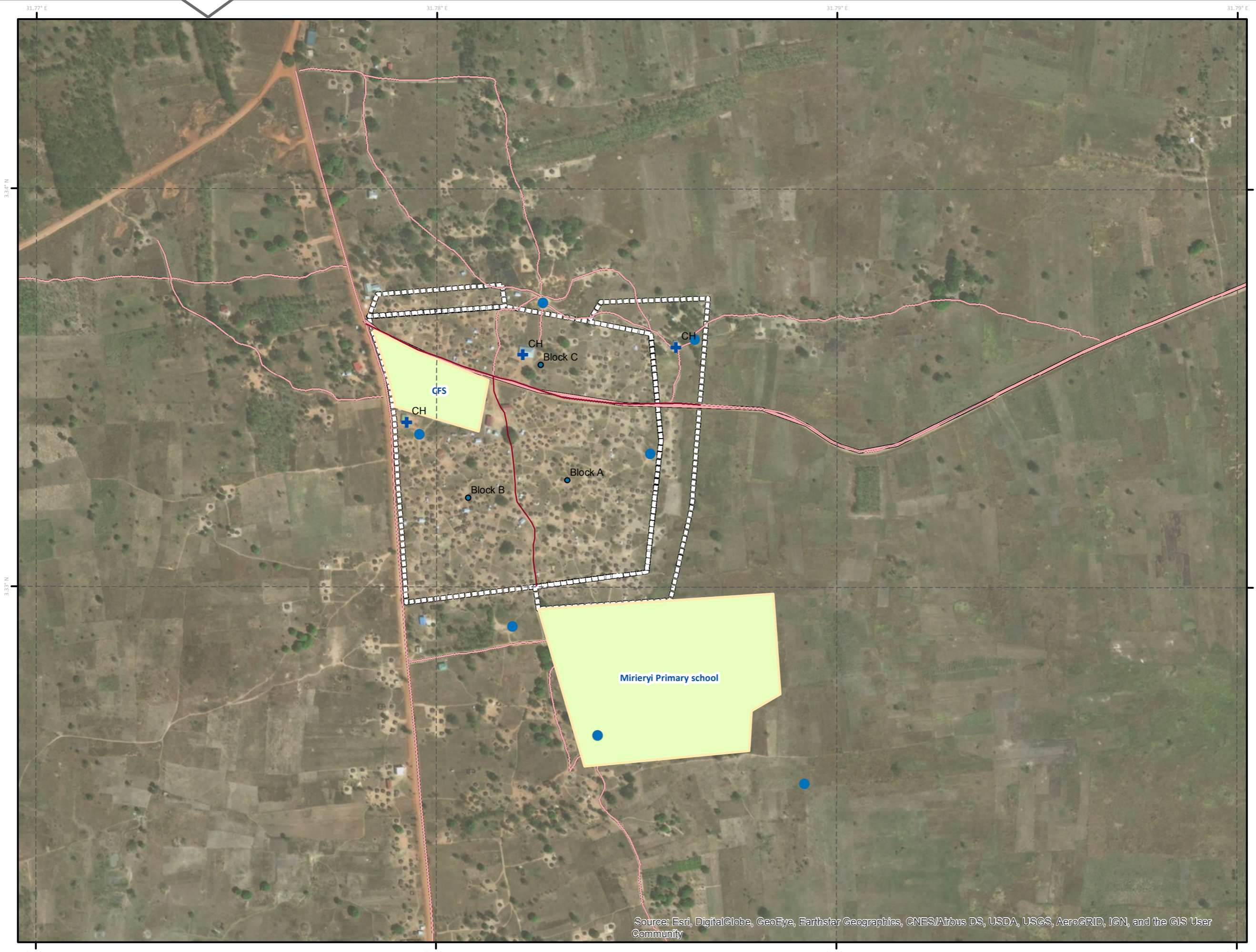
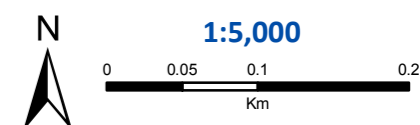
Principal settlement specifications

District: Adjumani
Subcounty: Ofua
Date of establishment: 1 Jan 1994
Surface Area: 17 hectares
Current population:
Family plot: 30m x 30m
Number of blocks: 3
Average Family size: 5

Coordinate System: GCS WGS 1984
Datum: WGS 1984
Units: Degree

Legend

- + Church
- Water Points**
- Borehole
- Rocks
- Access roads
- major Roads
- Blocks
- Settlement



Source: Esri, DigitalGlobe, GeoEye, Earthstar Geographics, CNES/Airbus DS, USDA, USGS, AeroGRID, IGN, and the GIS User Community