

Angola

17 July 2018

There is a **shortage of classrooms** to accommodate both refugee and host community students. More **trained teachers, sanitation facilities, equipment, and materials** are urgently needed.

Only 39 per cent of required maize meal and 28 per cent of the usual amount of pulses will be distributed in August due to funding shortage.

Lack of funding is hampering the transition from emergency shelter to a more permanent housing solution in Lóvua settlement.

KEY FIGURES

77%

of Congolese refugees from Kasai in Angola are women and children

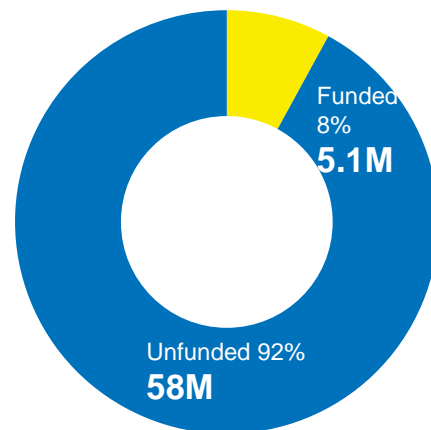
35,622

Biometrically registered Congolese refugees in Lunda Norte Province. Total of **22,378 refugees** are currently receiving food assistance.

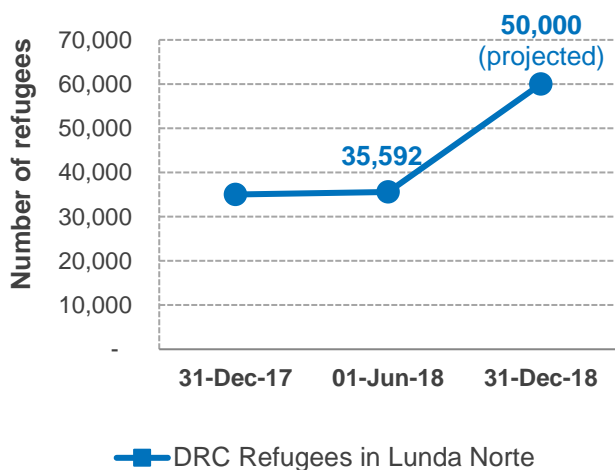
50,000

Inter-agency planning figure for Congolese refugees by the end of the year.

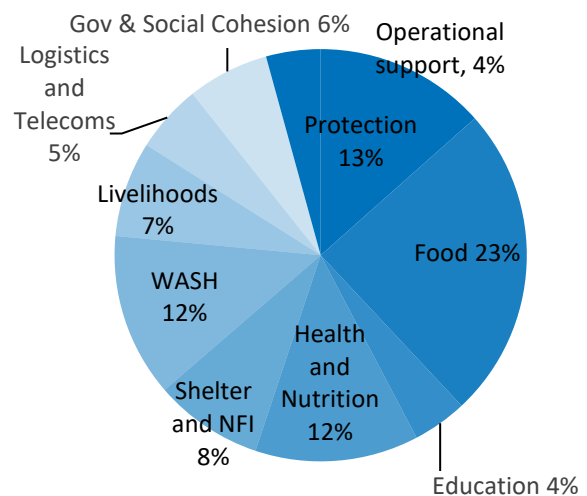
USD 63,881,333

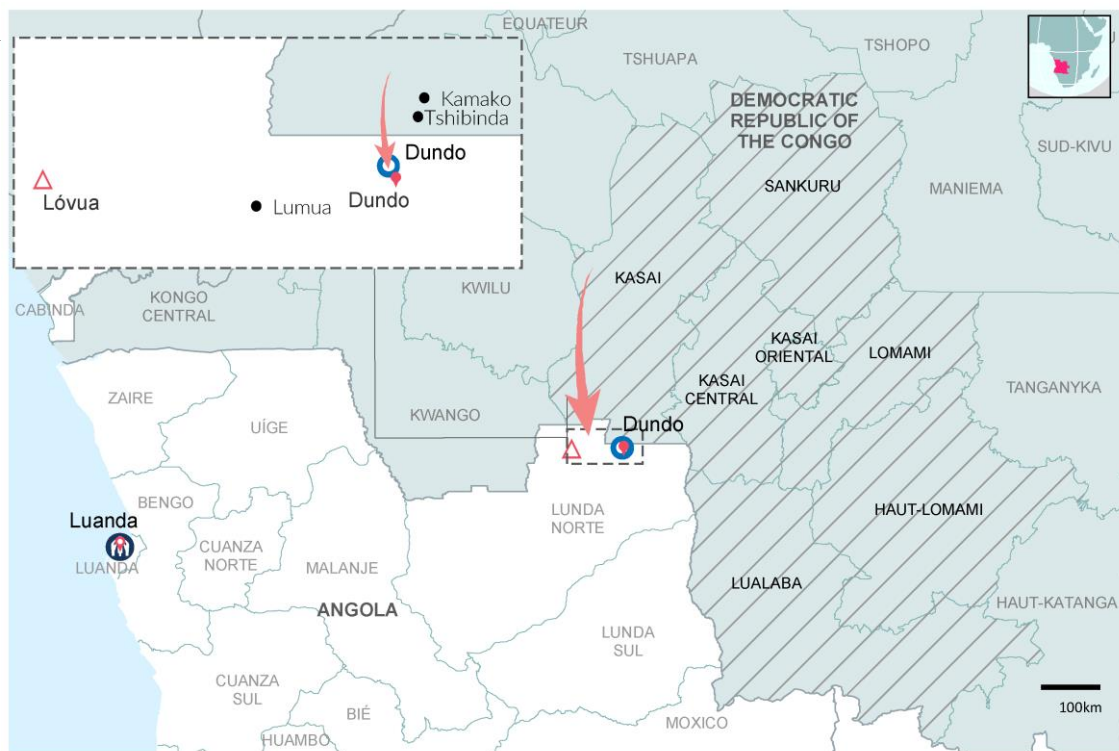


POPULATION TRENDS



FINANCIAL REQUIREMENTS





Operational Context

The outbreak of violence in the Kasai region of the Democratic Republic of the Congo (DRC) in March 2017 triggered the internal displacement of some 1.4 million persons and the flight of over 35,000 refugees into Lunda Norte Province, Angola.

The Government of Angola (GoA) has an open door policy to welcome Congolese nationals fleeing as a result of the conflict. However new arrivals have significantly decreased since July 2017.

As the situation remains volatile in the Kasai region with rising numbers of internally displaced people, humanitarian agencies in Angola maintain the 2017 response planning figure of 50,000 refugees until end of December 2018. UNHCR is not currently promoting voluntary repatriation of Congolese refugees from Lunda Norte Province to their country of origin.

The interagency humanitarian response for the Congolese refugees launched a new appeal for funding to cover the areas of protection, emergency shelter, livelihoods, food security and nutrition, non-food items, water, sanitation, hygiene, health including mental health, and education until the end of 2018. Currently, 13,669 Congolese refugees (3,353 families) are residing in Lóvua settlement.

Highlights

- **World Refugee Day:** There were celebrations in the Lóvua refugee settlement on World Refugee Day, which included a football match between refugees and humanitarian workers as well as a display of traditional dances. In Luanda, a refugee photo exhibition of pictures of refugees in Lóvua and in Luanda was inaugurated in an event gathering refugees, the diplomatic community and members of the Government of Angola
- **External Relations:** A meeting was held between the Provincial Governor of Lunda Norte and the UNHCR Head of Field Office in Dundo. The aim of this meeting was to update local authorities on the plans for the upcoming donor mission to the province, discuss the current situation in the DRC, update the Governor on preparedness for an eventual emergency, and on the relocation of refugees in the urban community to Lóvua Settlement.

Achievements



PROTECTION

Achievements and Impact

- **Registration:** Out of the 35,622 biometrically registered refugees, 22,347 individuals (5,361 families) participated in the last food distribution. The decrease in number of assisted refugees affects mainly the urban population and may be due to poor communication and the long distance to Dundo town distribution centre, amongst other factors.
- Some 184 mama-kits were distributed to 184 pregnant women (7-9 months). The mama-kits will ensure that new born babies can have adequate resources and include items such as baby blankets, diapers and sanitary napkins.
- **Police operation in Lunda Norte:** In Lunda Norte, the national police launched an operation targeting irregular migrants, especially from DRC, through roadblocks and random spot checks on vehicles and motorbike riders. It is unclear how long the operation will last, but UN and partners' staff have been advised to carry documentation at all time. The 53 refugees, who were arrested during this operation have now been released.
- An outreach activity on domestic violence was carried out in Lóvua and reached 2,293 refugees. Many male refugees appear to disagree with the gender equality lessons that partners are conducting and therefore, a workshop for males is being developed to discuss this.
- Some 213 refugee children participated in a painting event that was organised by several partners in Luanda.
- **SGBV:** In Luanda, there were activities with over 40 refugees on prevention of SGBV and on gender topics.

Identified Needs and Remaining Gaps

- **Education:** School materials, such as plastic chairs and tables, arrived in Lóvua settlement. However, the number of classrooms in the four existing schools remains insufficient to accommodate the children attending school, which frequently exceeds the capacity of 4,000 children. There are only 18 teachers, therefore the pupil/class ratio frequently surpasses 100:1. In

order for refugee children and those of the local host communities to be fully integrated into the Angolan formal school system more classrooms, school equipment, WASH facilities and trained teachers are needed.

- **Patrolling:** The Police contingent in Lóvua settlement lacks transportation means to patrol the site. The long distances and the absence of a permanent police vehicle in the settlement due to lack of fuel hamper the daily policing activities, in particular during night-time.



Football match between partners and refugees on World Refugee Day in Lóvua Settlement. UNHCR/ O. Akindipe



FOOD SECURITY AND NUTRITION

Achievements and Impact

- **Joint Assessment Mission (JAM):** The partners involved in the JAM process debriefed representatives from the interagency operation and government officials on the Joint Assessment Mission that was carried out in April in Lóvua to assess the status of food security, livelihoods, self-reliance, and protection of the refugees in Lóvua settlement.
- **Food Security:** Due to late arrival of funds, there will be a reduction in the quantity of food provided to refugees during the month of July. Maize meal assistance will be reduced by 39% and pulses (beans) will be reduced by 28%. Super Cereal+ assistance will be increased by 50%, as World Food Programme (WFP) phases out of the acute malnutrition programme.
- **Nutrition:** A total of 2,864 children (6 to 59 months) were screened for malnutrition in Lóvua, resulting in the identification of 19 cases of Moderate Acute Malnutrition (MAM) and 3 cases of Severe Acute Malnutrition (SAM).

Identified Needs and Remaining Gaps

- Based on current funding, only seven per cent of required food commodities will be available in September 2018. Additional resources are urgently required to meet the refugee population's basic food and nutrition requirements.



Achievements and Impact

- **Primary health care and medical consultations:** In Lóvua, 997 consultations were undertaken, and 35 refugees were referred to secondary health facilities. The main five morbidities were linked to malaria, musculoskeletal pain and upper respiratory tract infections and parasitizes. Three patients continue receiving the HIV/AIDS prophylaxis and 14 patients are benefiting from the TB treatment programme at Sakavula provincial hospital.
- **Sexual & reproductive health (SRH):** Antenatal (ANC) and postnatal care (PNC) services continue. In Lóvua, 66 women received ANC consultations whilst 27 women received PNC services.

Identified Needs and Remaining Gaps

- **Health facilities and equipment:** Refugees continue to prefer giving birth either in their emergency shelters or arrive at the clinic in Lóvua very late and are unwilling to be referred to the general hospital in Dundo due to discrimination and distance. Lóvua clinic is not equipped to deal with complication during childbirth. Partners are considering designating the Lóvua Municipality health post as a first line of referral for non-high-risk births, which would also benefit the local communities.
- The lack of a second ambulance continues to hamper the efficient transfer of medical referrals to Dundo hospital, as well the movements of patients in the settlement, as many villages are far from the clinic.
- With the population increase, the settlement requires two additional medical doctors and six nurses to face the current demands in Lóvua.
- **Reproductive Health:** 3,500 dignity kits are required to address the needs of 1,780 women under the sexual and reproduction health age for the upcoming three months.
- Additional adolescent and youth friendly spaces are needed for 10,000 refugees for sexual and reproductive health lifesaving services.



WATER AND SANITATION

Achievements and Impact

- **Water:** The development of the first borehole has been completed and the construction of the second one is ongoing.
- 82 WASH mobilisers have been recruited and trained to assist in the implementation of WASH

activities in Lóvua.

Identified Needs and Remaining Gaps

- **Water:** Water trucking by partners continues to present severe challenges due to a lack of fuel for the two government water trucks and funding to proceed with WASH activities.
- The overall lack of funding for prolonged water trucking, which is needed due to the fact that the borehole drilling was fraught with delays and complications. Five boreholes still need drilling and will therefore only be operational much later than initially anticipated.



SHELTER & SITE PLANNING

Achievements and Impact

- **Shelter:** Mobilisation for the construction of a second medical clinic in Lóvua by partners is ongoing. The second medical clinic will make health services more accessible to refugees who live far from the existing clinic.
- An assessment of transitional shelters that have been constructed by refugees is ongoing. This will assist to determine the quantity of plastic sheets needed for roofing of the transitional shelters.
- **Site planning:** Refugees in Lóvua are cutting trees beyond the settlement area. To address this situation, awareness campaigns to encourage refugees to stop this practice are being implemented.
- The layout for permanent classrooms in Lóvua settlement was completed and agreed with the Ministry of Education at provincial level. One of the requirements to start formal education for refugee children is the construction of permanent structures compliant with the standards of the Ministry of Education.

Identified Needs and Remaining Gaps

- **Shelter:** The plastic sheets and family tents, used to construct 3,195 emergency shelters in Lóvua early 2018, are gradually getting run-down due to the harsh weather conditions over the last six months. The current lack of funding is hampering the purchase of materials needed to activate the transitional shelter strategy and move from emergency shelter to more permanent housing made of mud bricks and, preferably with zinc roofing. In addition, the procurement of timber in the region is proving to be challenging as suppliers now face legal restrictions to cut, transport and sell wood.
- **Site Planning:** Additional personnel is required for plotting and to complete the new villages to accommodate the 11,000 refugees living in Dundo town.



LIVELIHOODS

Achievements and Impact

- 18 hectares of agricultural land were distributed to 36 refugee households (½ hectare per household). In total, 168 hectares of agricultural land have been cleared and distributed to 336 refugee households, which is 34% of the households identified for agricultural activities and land allocation

Identified Needs and Remaining Gaps

- **Partnerships:** Livelihoods activities are limited, but very much needed to move from the emergency setting to a more stable situation. Without resources, the operation will not have enough development partners to assist both the refugee and the host communities in Lóvua.

Working in partnership

- Humanitarian and development partners are actively supporting the Government of Angola to ensure adequate and effective response to the needs of the Congolese refugees. A bi-weekly inter-agency coordination meeting is held in Luanda. In Dundo, weekly inter-agency meetings ensure a comprehensive and integrated operational response to the refugee situation. Sectorial working group coordination meetings are also organised weekly in Dundo.

Partners in the response:

- Angolan Red Cross Society
- CARITAS
- FAO - Food and Agriculture Organization of the United Nations
- IOM - International Organization for Migration
- JRS - Jesuit Refugee Service
- LWF - Lutheran World Federation
- MAG - Mine Advisory Group
- MdM - Médicos del Mundo
- NCA - Norwegian Church Aid
- PIN - People in Need
- UNAIDS - The Joint United Nations Programme on HIV/AIDS
- UNDP - United Nations Development Programme
- UNDSS - United Nations Department for Safety and Security
- UNFPA - United Nations Population Fund
- UNHCR - United Nations High Commissioner for Refugees
- UNICEF - United Nations' Children's Fund
- UNRCO - United Nations Resident Coordinator's Office
- WFP - World Food Programme
- WHO - World Health Organization
- WVI - World Vision International

The [Angola Inter-Agency Refugee Appeal \(January – December 2018\)](#) is available on the [Angola Operational Data Portal](#). Agencies are very grateful for the financial support provided by donors, contributing to their activities with un-earmarked and earmarked funds, as well as for those who have contributed directly to the operations in Angola.

[Special thanks to China, Germany, Japan and the United States of America](#) for their contributions to UNHCR's operations in, Lunda Norte, Angola in 2018.

[Special thanks to Japan](#) for their contribution to UNICEF's operation in Lunda Norte, Angola in 2018.

CONTACTS

Omotola Akindipe, Associate Reporting Officer
akindipe@unhcr.org; Tel: +224 926 829 455

Markku Aikonus, Senior Regional External Relations Officer
aikonus@unhcr.org; Tel: +27 81 797 7456

LINKS

[Angola Operational Data Portal](#)