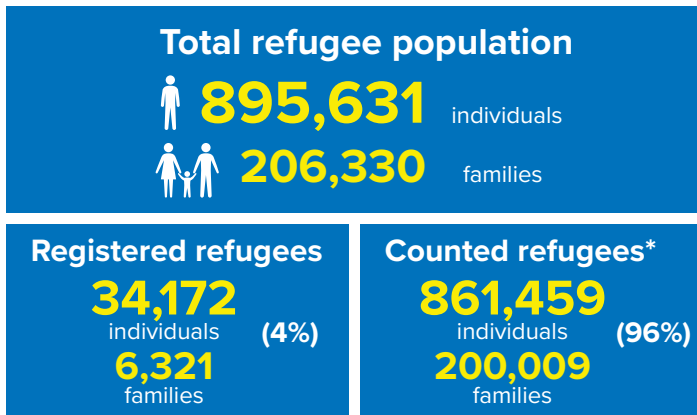
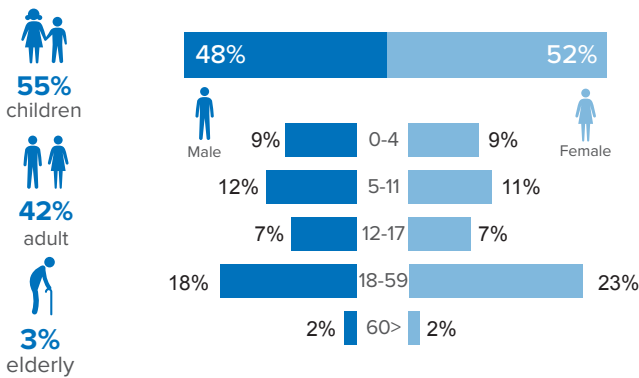


Refugee population figure

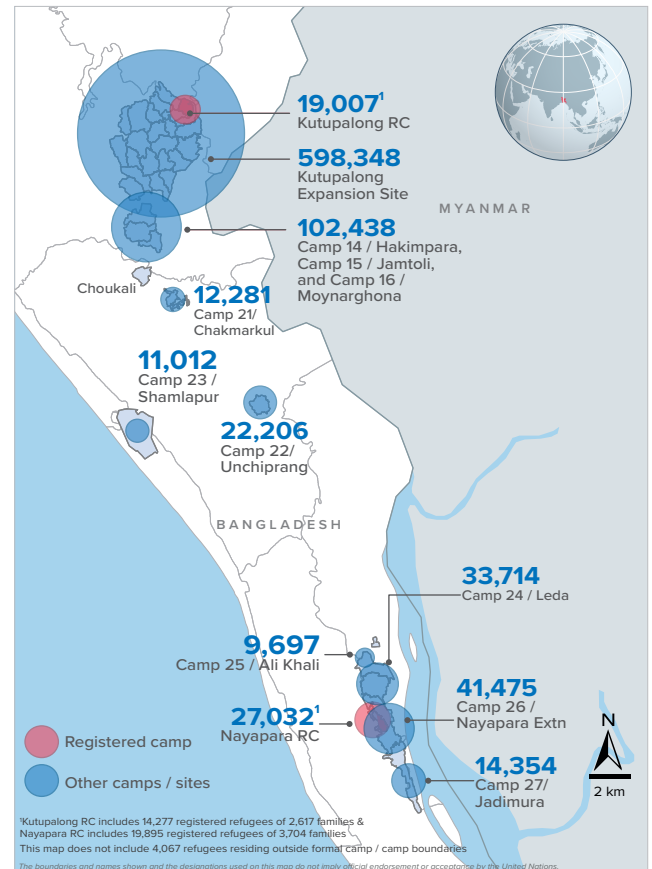


* Some refugees living in host communities and in certain locations beyond the camp boundaries may not have been counted.

Demography

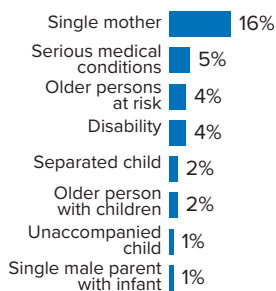


Refugee population density



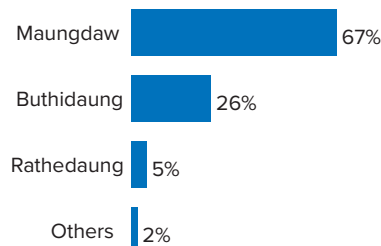
Specific needs

31% of the families have been identified with at least one protection vulnerability*



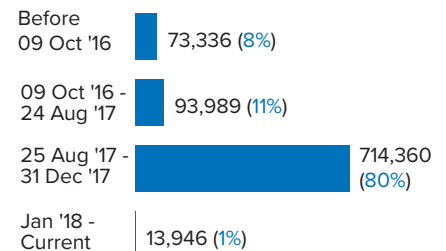
Place of origin

67% of the Rohingya refugees comes from Maungdaw Township



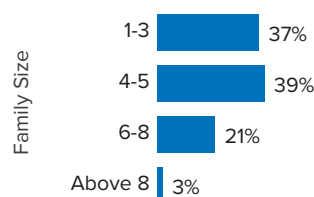
Period of arrival

80% of current population arrived between Aug. and Dec 2017



Family size breakdown

39% of the families have a standard family size of 4-5 persons



Linking exercise

The Linking Exercise, conducted from December 2017 until February 2018, was a collaborative effort between the Government of Bangladesh and the United Nations High Commissioner for Refugees that aimed to merge the family based Rohingya population data collected through the Family Counting Exercise with attributes of the individual Rohingya population data collected by the Ministry of Home Affairs.

The exercise was conducted with a view to creating a unified dataset with individual data grouped into families which will be used to better protect and assist families.

*Figures are the percentage of total families with at least one person with a specific need. More than one specific need may be present within one family.

Age and gender breakdown by camp/site

Camp	Infant female below 1	Infant male below 1	1-4 Children female	1-4 Children male	5-11 Children female	5-11 Children male	12-17 Children female	12-17 Children male	18-59 Adult female	18-59 Adult male	60+ Elderly female	60+ Elderly male	Total Families	Total Individuals
Camp 15	949	895	3,543	3,692	5,309	5,484	3,429	3,604	11,531	9,194	905	907	11,174	49,442
Camp 26	700	624	3,160	3,178	4,791	5,266	3,000	2,804	9,907	6,842	641	562	9,493	41,475
Camp 13	707	755	3,050	3,140	4,455	4,718	2,739	2,812	9,627	7,641	736	676	9,618	41,056
Camp 1W	755	755	2,916	2,927	4,392	4,454	2,676	2,763	9,560	7,683	853	746	9,342	40,480
Camp 1E	655	729	2,766	2,929	4,214	4,437	2,618	2,747	9,223	7,691	787	685	9,086	39,481
Camp 3	676	720	2,995	3,058	4,130	4,357	2,476	2,666	9,250	7,228	681	573	9,021	38,810
Camp 7	699	707	2,936	3,069	4,165	4,367	2,592	2,554	8,993	7,061	707	638	9,156	38,488
Camp 9	623	559	2,767	2,777	3,965	4,027	2,484	2,491	8,495	6,888	709	690	8,601	36,475
Camp 24	512	524	2,290	2,502	4,044	4,168	2,323	2,414	8,039	5,930	547	421	7,800	33,714
Camp 8W	549	532	2,644	2,592	3,482	3,674	2,045	2,157	7,692	6,149	613	543	7,519	32,672
Camp 10	632	612	2,557	2,680	3,361	3,732	2,135	2,077	7,714	6,050	595	522	7,575	32,667
Camp 8E	504	504	2,274	2,373	3,417	3,469	2,326	2,258	7,432	5,965	546	556	7,291	31,624
Camp 14	549	577	2,262	2,496	3,328	3,673	2,232	2,220	7,164	5,750	588	518	6,904	31,357
Camp 11	544	574	2,335	2,367	3,346	3,548	2,127	2,185	7,198	5,905	539	496	7,069	31,164
Camp 4	563	595	2,288	2,454	3,428	3,563	1,969	1,964	7,242	5,660	488	386	7,531	30,600
Camp 2E	539	506	2,206	2,266	3,203	3,469	1,750	1,805	6,973	5,219	509	437	6,949	28,882
Camp 18	474	503	2,228	2,275	2,913	3,023	1,814	1,711	6,480	5,068	360	371	6,655	27,220
Nayapara RC*	87	91	1,556	1,631	2,924	3,011	2,307	2,364	7,172	5,028	447	414	5,732	27,032
Camp 2W	411	410	1,853	1,977	2,845	3,090	1,561	1,569	5,891	4,659	490	374	5,748	25,130
Camp 5	445	474	1,967	2,048	2,742	2,817	1,532	1,613	5,947	4,622	456	412	6,028	25,075
Camp 6	512	446	1,994	2,103	2,670	2,850	1,442	1,529	5,703	4,504	427	384	5,721	24,564
Camp 22	410	382	1,596	1,793	2,543	2,613	1,678	1,671	4,843	3,967	377	333	4,583	22,206
Camp 12	373	360	1,616	1,720	2,383	2,643	1,585	1,560	5,135	3,999	409	353	4,905	22,136
Camp 16	434	399	1,592	1,677	2,329	2,542	1,527	1,439	4,976	4,015	385	324	4,839	21,639
Camp 19	337	324	1,600	1,676	2,250	2,505	1,428	1,470	4,851	3,776	346	289	4,816	20,852
Kutupalong RC*	93	80	1,087	1,241	2,008	2,146	1,561	1,505	4,847	3,873	292	274	3,786	19,007
Camp 17	234	275	1,317	1,290	1,732	1,811	958	963	3,657	2,790	225	220	3,649	15,472
Camp 27	242	217	1,101	1,158	1,682	1,719	1,032	1,069	3,330	2,398	219	187	3,172	14,354
Camp 21	229	213	909	965	1,347	1,410	760	800	2,963	2,367	184	134	3,011	12,281
Camp 23	182	200	813	849	1,456	1,496	634	653	2,698	1,699	171	161	2,672	11,012
Camp 25	141	159	725	716	1,133	1,217	759	700	2,253	1,610	171	113	2,183	9,697
Camp 20	125	135	548	629	780	837	407	439	1,760	1,301	122	97	1,735	7,180
Camp 4 Extension	84	88	326	374	491	494	246	240	1,043	819	62	61	1,046	4,328
Camp 20 Extension	79	70	325	339	419	441	244	236	964	767	58	50	976	3,992
No camp**	70	63	303	319	458	480	269	291	933	735	84	62	944	4,067
Total	15,118	15,057	66,445	69,280	98,135	103,551	60,665	61,343	211,486	164,853	15,729	13,969	206,330	895,631

*Kutupalong RC includes 14,277 registered refugees of 2,617 families & Nayapara RC includes 19,895 registered refugees of 3,704 families

**This represents refugees residing outside formal camp boundaries

Population figures by period of arrival

Arrival Period	Before 09 Oct 2016		09 Oct 2016 - 24 Aug 2017		25 Aug 2017 - 31 Dec 2017		01 Jan 2018 - Current date		Total Families	Total Individuals
Camp	Total Families	Total Individuals	Total Families	Total Individuals	Total Families	Total Individuals	Total Families	Total Individuals		
Camp 15	11	47	766	3,397	10,393	45,978	4	20	11,174	49,442
Camp 13	11	42	785	3,436	8,802	37,495	20	83	9,618	41,056
Camp 26	72	352	831	3,695	8,148	35,518	442	1,910	9,493	41,475
Camp 1W	20	79	1,038	4,454	8,262	35,873	22	74	9,342	40,480
Camp 7	121	529	1,064	4,596	7,917	33,144	54	219	9,156	38,488
Camp 1E	34	163	1,609	6,910	7,416	32,307	27	101	9,086	39,481
Camp 3	17	80	947	4,168	8,026	34,437	31	125	9,021	38,810
Camp 9	90	354	2,110	8,581	6,395	27,520	6	20	8,601	36,475
Camp 24	2,180	10,558	527	2,224	5,077	20,880	16	52	7,800	33,714
Camp 10	12	53	616	2,631	6,931	29,924	16	59	7,575	32,667
Camp 4	25	108	297	1,223	6,970	28,266	239	1,003	7,531	30,600
Camp 8W	25	113	654	2,850	6,767	29,428	73	281	7,519	32,672
Camp 8E	34	142	854	3,734	6,382	27,665	21	83	7,291	31,624
Camp 11	1	3	1,089	4,836	5,976	26,313	3	12	7,069	31,164
Camp 2E	3,238	13,684	1,677	7,087	2,001	8,005	33	106	6,949	28,882
Camp 14	10	37	601	2,789	6,284	28,489	9	42	6,904	31,357
Camp 18	12	48	166	686	6,450	26,386	27	100	6,655	27,220
Camp 5	23	90	535	2,267	5,452	22,651	18	67	6,028	25,075
Camp 2W	1,833	8,410	1,400	6,082	2,468	10,479	47	159	5,748	25,130
Nayapara RC*	3,751	20,084	252	977	1,693	5,865	36	106	5,732	27,032
Camp 6	56	254	1,074	4,840	4,576	19,419	15	51	5,721	24,564
Camp 12	4	20	252	1,155	4,627	20,857	22	104	4,905	22,136
Camp 16	5	25	285	1,266	4,549	20,348	-	-	4,839	21,639
Camp 19	4	13	400	1,804	4,232	18,284	180	751	4,816	20,852
Camp 22	6	39	208	1,005	4,360	21,134	9	28	4,583	22,206
Kutupalong RC*	2,927	15,603	198	778	643	2,571	18	55	3,786	19,007
Camp 17	33	149	175	707	2,312	9,675	1,129	4,941	3,649	15,472
Camp 27	29	142	279	1,315	2,716	12,219	148	678	3,172	14,354
Camp 21	12	53	144	626	2,732	11,153	123	449	3,011	12,281
Camp 23	253	1,162	287	1,222	2,116	8,559	16	69	2,672	11,012
Camp 25	18	90	254	1,133	1,907	8,455	4	19	2,183	9,697
Camp 20	55	244	109	477	1,251	5,166	320	1,293	1,735	7,180
Camp 4 Extension	43	164	67	298	878	3,618	58	248	1,046	4,328
Camp 20 Extension	56	248	62	275	715	2,922	143	547	976	3,992
No camp**	34	154	109	465	779	3,357	22	91	944	4,067
Grand Total	15,055	73,336	21,721	93,989	166,203	714,360	3,351	13,946	206,330	895,631

*Kutupalong RC includes 14,277 registered refugees of 2,617 families & Nayapara RC includes 19,895 registered refugees of 3,704 families

**This represents refugees residing outside formal camp boundaries

Creation date: 30 September 2018 Sources: UNHCR Feedback: bgdcoim@unhcr.org

Population figures by specific needs

Camp	Families with separated children	Families with unaccompanied children	Families with a person with disability	Families with older person at risk	Families with older person at risk with children	Families with people with serious medical condition	Single male parents with infants	Single female parent	Families with people with specific needs
Camp 26	172	54	283	360	114	216	81	2,198	3,259
Camp 15	236	60	355	593	199	463	63	1,615	3,212
Camp 1E	168	41	550	451	319	483	56	1,137	2,880
Nayapara RC	178	41	608	164	50	1,197	35	1,193	2,827
Camp 7	221	29	354	362	245	454	106	1,275	2,769
Camp 13	246	79	311	397	209	345	65	1,430	2,763
Camp 1W	164	32	395	445	213	448	65	1,264	2,749
Camp 24	177	74	301	289	121	258	43	1,643	2,644
Camp 3	198	62	373	355	289	327	63	1,401	2,634
Camp 9	150	74	385	397	264	489	95	1,056	2,519
Camp 4	240	87	181	292	197	268	100	1,442	2,465
Camp 10	127	79	387	342	244	512	94	1,049	2,426
Camp 8E	154	70	343	369	242	416	84	1,071	2,342
Camp 2E	158	52	257	247	200	312	52	1,191	2,177
Camp 18	155	62	241	225	168	303	81	1,165	2,123
Camp 5	162	69	208	288	167	210	61	1,095	1,955
Camp 11	168	61	267	297	157	232	66	1,071	1,953
Camp 14	119	46	187	314	138	305	43	974	1,860
Camp 6	166	44	219	241	125	316	39	815	1,809
Camp 2W	107	18	280	239	114	264	61	803	1,699
Camp 8W	91	37	246	269	156	289	81	739	1,680
Kutupalong RC	60	15	350	105	39	769	10	587	1,600
Camp 19	123	34	192	221	81	118	46	766	1,416
Camp 12	81	34	144	206	103	139	32	776	1,353
Camp 16	93	22	172	202	81	162	37	712	1,326
Camp 17	104	19	130	141	76	110	36	659	1,135
Camp 22	69	17	159	156	77	154	16	583	1,117
Camp 27	55	14	100	88	34	63	21	733	1,030
Camp 23	50	12	74	97	43	70	11	753	1,022
Camp 21	66	23	110	96	32	108	35	515	901
Camp 25	38	23	75	84	35	87	18	501	765
Camp 20	26	12	93	68	47	75	20	300	559
Camp 4 Extension	17	11	47	33	28	45	12	152	296
Camp 20 Extension	26	13	44	38	25	41	12	143	286
No camp	20	9	37	52	18	27	10	176	312
Total	4,385	1,429	8,458	8,523	4,650	10,075	1,750	32,983	63,863