

425,459 Total refugee population
95 Total number of partners

- Camp 1W (30 partners)**
- BRAC
 - CODEC, SS, MUKTI, YPSA, PLAN, BRAC, COAST
 - TAI, MUKTI, MoWCA, CARE, BRAC
 - GK, ACF, HI, AMDA, HAEFA, RTMI
 - ACF, CWV, TDH
 - TAI, HI, BITA, MoWCA
 - BRAC, HI, BDRCS, CCDB
 - BRAC, NGOF, ACF, COAST, SHED, BGS
 - RI, CODEC, SCI
 - WFP, MUKTI
 - IUCN
 - HELVTAS/REACH, NPM/IOM

- Camp 1E (35 partners)**
- BRAC
 - CODEC, SS, MUKTI, YPSA, PLAN, BRAC
 - RTMI, TAI, MUKTI, COAST
 - RTMI, HI, HTN, FRIENDSHIP, GK/MI, BRAC, OH, HF, WHO
 - TDH, BRAC, ACF
 - TAI, HI, COAST, MUKTI, CWV, BITA, SCI, CARE
 - BRAC, BDRCS
 - BRAC, ACF, CCDB, COAST, DPHE, IOM, ICCO/ACTA, MoDMR, OBAT, OXFAM, TDH, CARE, MUKTI, SHED
 - COAST, MUKTI, TAI
 - WFP, MUKTI
 - IUCN
 - HELVTAS/REACH, NPM/IOM

Partner presence by sector

Site Management	4
Education	14
GBV	14
Health	39
Nutrition	10
Protection	19
Shelter & NFIs	28
WASH	35
Child Protection	19
Food Security	8
Environment	1
Assessment	5

- Camp 3 (45 partners)**
- HELVTAS/ACTED
 - CODEC, SS, MUKTI, PLAN, BRAC
 - BRAC, RI, BNWLA, RTMI, CCDB, MoWCA
 - RTMI, RI, BRAC, HI, PHD, DALIT, FRIENDSHIP, IRC, MSF, IOM, TMSS, CI, AFF, DAM, RCDS
 - TDH, SARPV, CWV/MEDIAIR, ACF, KA
 - BNWLA, BRAC, OXFAM, HI
 - BRAC, BDRCS, ACF, CARITAS, CI, OBAT, CWV, MHI, KA, AFF, ACT-A, OXFAM, DF
 - OXFAM, NGOF, ACF, BRAC, BA, WATERAID, PLAN
 - BRAC, RI, HI, MUKTI, SCI, ACF
 - MUKTI, OXFAM, SCI, YPSA, WFP
 - IUCN
 - HELVTAS/REACH, NPM/IOM

- Camp 5 (39 partners)**
- DRC
 - CODEC, SS, MUKTI, SCI, AM, BRAC
 - BRAC, TAI, HELP
 - FH/MTI, GK, HELP, MSF, RTMI, MoWCA, DGHA
 - ACF, CWV, SARPV
 - TAI, DRC
 - ACF, DRC, BDRCS, AFAD, BDRCS, DIYANET, OBAT, HELPERS, AM, MML
 - NGOF, BRAC, ACF, DPHE, AFAD, MoDMR, MSF-H, OXFAM, SCI, SPACE, WATERAID
 - TDH, BRAC, MUKTI, FRIENDSHIP
 - WFP, MUKTI, SCI
 - HELVTAS/REACH, NPM/IOM

- Camp 4 (39 partners)**
- HELVTAS/ACTED
 - CODEC, SS, SCI/DAM, MUKTI, OBAT, YPSA, UTSA
 - BNWLA, BRAC, RTMI, CCDB, MoWCA
 - GK, RTMI, OBAT, HI, SCI, BGS, HOPE, BDRCS, PHD
 - SCI, TDH, ACF, WVI, SARPV
 - BNWLA, BRAC, HOPE, OXFAM, HI
 - BRAC, CARITAS, BDRCS, MHI, OXFAM, KA, CI
 - OXFAM, NGOF, BRAC, ACF, WATERAID, BA, PLAN
 - SCI, TDH, RI, CARITAS, HI, CODEC, BRAC, MUKTI, UTSA
 - AAB/YPSA, BRAC, DAE, OXFAM, SCI
 - IUCN
 - HELVTAS/REACH, NPM/IOM, HELVTAS/ACTED

- Camp 4 Ext (12 partners)**
- HELVTAS/ACTED
 - GK
 - BRAC
 - ACF, CWV
 - BRAC, CARITAS, BDRCS
 - OXFAM, BDRCS, BRAC, NGOF
 - BRAC
 - WFP
 - HELVTAS/REACH, NPM/IOM

- Camp 17 (28 partners)**
- HELVTAS/ACTED
 - BRAC, SS, SCI/DAM
 - RI
 - RI, HI
 - SCI, ACF, CWV, SARPV, SHED
 - CARITAS, BDRCS, BDRCS
 - FRIENDSHIP, HI, RI, RTMI, SCI
 - NGOF, BDRCS, BRAC, CARITAS, DSK, FRIENDSHIP, IOM, MSF-F, MSF-H, OBAT, SCI
 - RI, PLAN, HI, TDH, AMURT/SKUS, BRAC
 - SCI
 - IUCN
 - HELVTAS/REACH, NPM/IOM

- Camp 6 (24 partners)**
- DRC
 - CODEC, MUKTI, PLAN
 - BRAC, BNWLA
 - GK, FH/MTI, RTMI, MoWCA
 - ACF, BRAC, CWV/MEDIAIR, SARPV
 - DRC, HELVTAS/PIN, MoWCA
 - DRC, BDRCS, ACF, BRAC, GUSS, MHI, BDRCS
 - BRAC, ACF, FRIENDSHIP, PLAN, GRC, GUSS, NGOF
 - DRC
 - WFP, MUKTI
 - HELVTAS/REACH, NPM/IOM

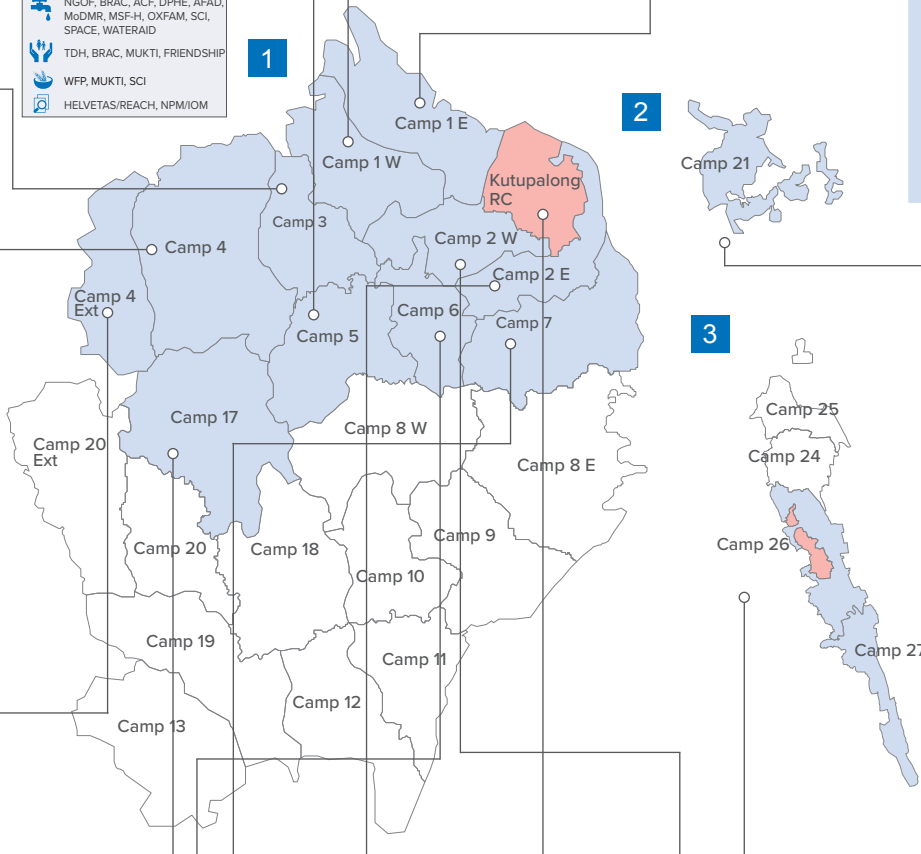
- Camp 2E (21 partners)**
- DRC
 - BRAC, MUKTI, CODEC, COAST, TRUST
 - MUKTI
 - DRC, TAI, BRAC, MoWCA, RTC
 - ACF, SARPV
 - DRC, BDRCS, ACF, BRAC, MHI, BDRCS
 - IOM, GK, RTMI
 - BRAC, ACF
 - DRC, CODEC
 - MUKTI, BA
 - HELVTAS/REACH, NPM/IOM, ACF, SHED/IOM

- Kutupalong RC (15)**
- BRAC
 - CODEC, SS
 - TAI
 - MDMR/RRRC, GK, ACF, RTMI
 - ACF
 - TAI
 - BDRCS, BRAC
 - NGOF, DPHE
 - SCI
 - WFP
 - HELVTAS/REACH, NPM/IOM

- Camp 26 (25 partners)**
- ADRA
 - CODEC, SS, YPSA, SCI/DAM
 - BNWLA, TAI, RI
 - ACF, FH/MTI, GK, MoDMR/RRRC, RTMI
 - ACF, SCI
 - BNWLA, TAI, SI, RI
 - ADRA, BDRCS, SI
 - NGOF, OXFAM, NABOLOK, UNICEF, BGS, SI
 - SCI, RI
 - ACF, WFP
 - HELVTAS/REACH, NPM/IOM

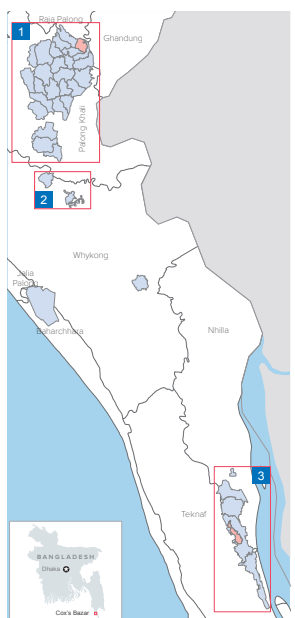
- Camp 7 (25 partners)**
- DRC
 - CODEC, SS, FRIENDSHIP, MUKTI, DAM
 - MUKTI, PULSE, BNWLA
 - CZM, IOM, SALT, FRIENDSHIP, MSF, CIMCH
 - ACF, BRAC, SHED
 - DRC, HELVTAS/PIN
 - DRC, ADRA, BDRCS, ACF
 - BRAC, ACF, DPHE, FRIENDSHIP, TDH, NGOF, WVI
 - DRC, CODEC, FRIENDSHIP
 - MUKTI
 - HELVTAS/REACH, NPM/IOM

- Camp 2W (21 partners)**
- DRC
 - TAI
 - CODEC, MUKTI, BRAC, COAST, TRUST
 - GK, IOM, RTMI
 - ACF
 - DRC, TAI, BRAC, MoWCA, RTC
 - DRC, BDRCS, BRAC, MHI, BDRCS
 - BRAC, ACF, SHED
 - DRC, BRAC, CODEC
 - MUKTI, BA
 - HELVTAS/REACH, NPM/IOM, SHED/IOM, ACF



- Camp 21 (17 partners)**
- ADRA
 - CODEC, SCI/DAM
 - BNWLA, BRAC
 - ACF, SCI, IRC, DGHS, QC, MOONLIGHT
 - ACF, SCI, BRAC
 - BNWLA, SI, BRAC
 - ADRA, BDRCS, DCA
 - BRAC, SI, QC
 - SCI
 - SCI
 - HELVTAS/REACH, ADRA, NPM/IOM

- Camp 27 (21 partners)**
- ADRA
 - CODEC, SCI/DAM, SCI
 - BNWLA, OXFAM
 - SCI, WHO, BRAC
 - SCI
 - BNWLA, SI, RI, HI, NGOF
 - ADRA, BDRCS, ACF, SI, BGS, UPPO
 - SCI, SI, OXFAM, BGS, NGOF, UNICEF
 - RI, NGOF
 - ACF, WFP
 - HELVTAS/REACH, ADRA, NPM/IOM



The boundaries and names shown and the designations used on this map do not imply official endorsement or acceptance by the United Nations.