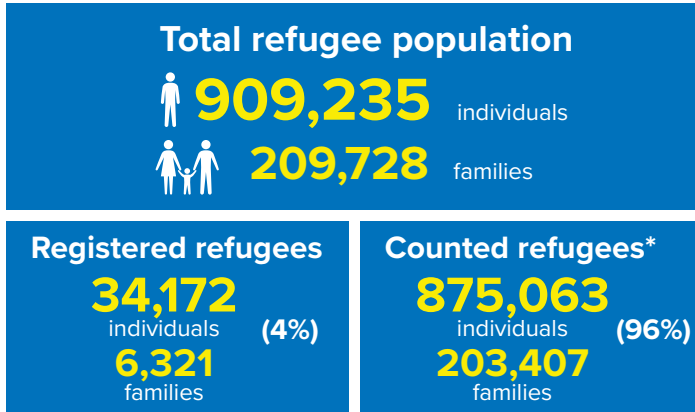
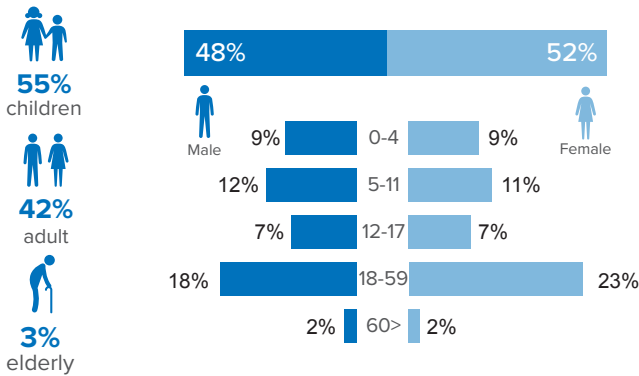


## Refugee population figure

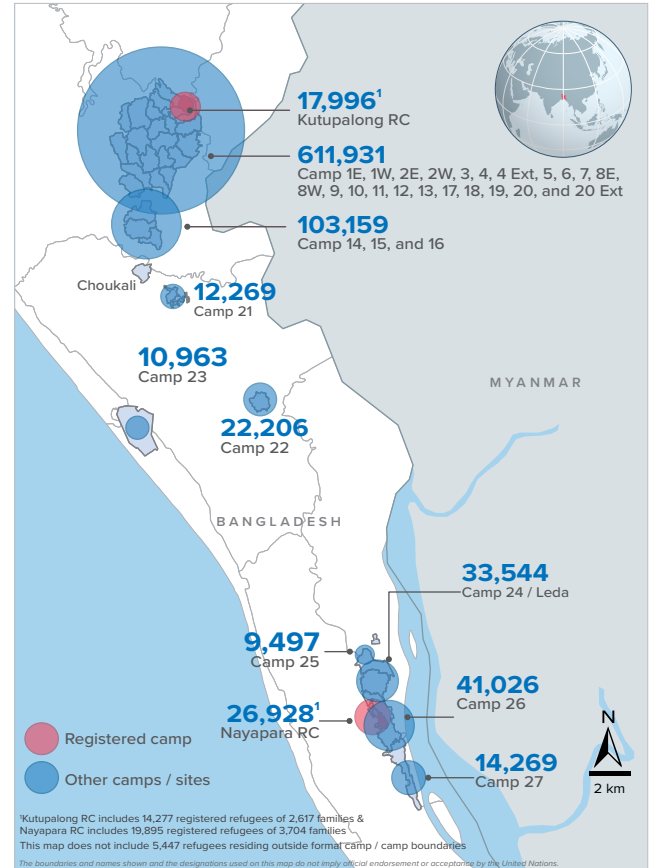


\* Some refugees living in host communities and in certain locations beyond the camp boundaries may not have been counted.

## Demography

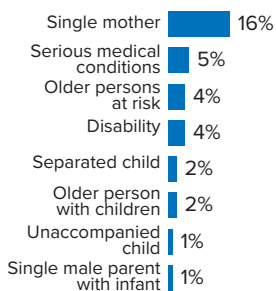


## Refugee population density



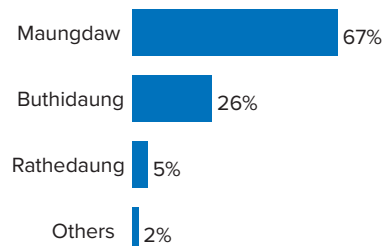
## Specific needs

**31%** of the families have been identified with at least one protection vulnerability\*



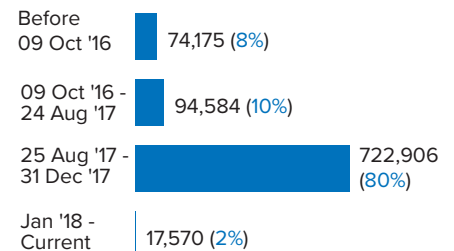
## Place of origin

**67%** of the Rohingya refugees comes from Maungdaw Township



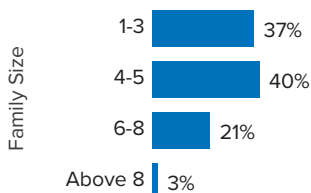
## Period of arrival

**80%** of current population arrived between Aug. and Dec 2017



## Family size breakdown

**40%** of the families have a standard family size of 4-5 persons



## Linking exercise

The Linking Exercise, conducted from December 2017 until February 2018, was a collaborative effort between the Government of Bangladesh and the United Nations High Commissioner for Refugees that aimed to merge the family based Rohingya population data collected through the Family Counting Exercise with attributes of the individual Rohingya population data collected by the Ministry of Home Affairs.

The exercise was conducted with a view to creating a unified dataset with individual data grouped into families which will be used to better protect and assist families.

\*Figures are the percentage of total families with at least one person with a specific need. More than one specific need may be present within one family.

## Age and gender breakdown by camp/site

Camp	Infant female below 1	Infant male below 1	1-4 Children female	1-4 Children male	5-11 Children female	5-11 Children male	12-17 Children female	12-17 Children male	18-59 Adult female	18-59 Adult male	60+ Elderly female	60+ Elderly male	Total Families	Total Individuals
Camp 15	951	899	3,548	3,692	5,303	5,483	3,426	3,605	11,544	9,189	908	905	11,184	49,453
Camp 13	721	772	3,101	3,220	4,521	4,777	2,780	2,859	9,830	7,760	745	686	9,800	41,772
Camp 26	694	615	3,131	3,134	4,747	5,205	2,973	2,774	9,805	6,758	635	555	9,396	41,026
Camp 1W	764	753	2,973	2,979	4,446	4,540	2,691	2,794	9,680	7,786	867	754	9,470	41,027
Camp 1E	677	746	2,837	3,016	4,330	4,549	2,698	2,797	9,466	7,860	818	711	9,324	40,505
Camp 3	696	737	3,001	3,100	4,209	4,417	2,513	2,706	9,377	7,318	692	591	9,138	39,357
Camp 7	716	734	3,041	3,182	4,305	4,495	2,688	2,623	9,250	7,228	725	659	9,411	39,646
Camp 9	625	568	2,808	2,814	3,989	4,059	2,484	2,488	8,573	6,926	712	692	8,683	36,738
Camp 24	506	521	2,278	2,488	4,028	4,147	2,308	2,403	8,003	5,904	543	415	7,761	33,544
Camp 10	627	620	2,594	2,725	3,397	3,747	2,147	2,085	7,791	6,110	599	521	7,651	32,963
Camp 8W	545	518	2,620	2,569	3,428	3,635	2,034	2,145	7,640	6,096	606	534	7,468	32,370
Camp 4	577	633	2,450	2,586	3,596	3,717	2,049	2,062	7,641	5,962	520	406	7,905	32,199
Camp 14	561	586	2,317	2,560	3,396	3,738	2,262	2,246	7,302	5,824	605	524	7,050	31,921
Camp 11	547	577	2,367	2,390	3,380	3,584	2,136	2,190	7,261	5,925	533	495	7,128	31,385
Camp 8E	496	498	2,247	2,326	3,363	3,413	2,306	2,234	7,354	5,890	537	554	7,203	31,218
Camp 2E	557	530	2,330	2,364	3,349	3,623	1,812	1,857	7,271	5,461	518	445	7,288	30,117
Nayapara RC*	86	90	1,549	1,624	2,914	2,994	2,301	2,359	7,142	5,008	447	414	5,705	26,928
Camp 18	471	496	2,196	2,231	2,869	2,982	1,788	1,680	6,384	4,988	354	358	6,540	26,797
Camp 2W	428	435	1,929	2,024	2,931	3,167	1,638	1,616	6,121	4,811	496	390	5,961	25,986
Camp 5	435	473	1,963	2,028	2,779	2,830	1,539	1,622	5,942	4,622	465	422	6,047	25,120
Camp 6	522	464	2,012	2,149	2,713	2,922	1,469	1,550	5,800	4,580	438	390	5,824	25,009
Camp 12	403	386	1,751	1,868	2,551	2,804	1,711	1,643	5,521	4,285	438	379	5,276	23,740
Camp 22	410	381	1,597	1,799	2,548	2,614	1,671	1,667	4,844	3,963	378	334	4,585	22,206
Camp 16	433	404	1,607	1,703	2,351	2,569	1,522	1,434	5,023	4,028	384	327	4,880	21,785
Camp 19	336	324	1,591	1,675	2,243	2,490	1,432	1,465	4,861	3,785	349	286	4,827	20,837
Kutupalong RC*	78	58	1,018	1,167	1,926	2,054	1,469	1,431	4,597	3,685	264	249	3,547	17,996
Camp 17	270	300	1,439	1,430	1,890	1,982	1,038	1,043	4,021	3,081	243	240	4,015	16,977
Camp 27	237	217	1,094	1,148	1,674	1,710	1,030	1,063	3,307	2,384	219	186	3,150	14,269
Camp 21	224	211	906	964	1,350	1,410	759	796	2,964	2,368	183	134	3,017	12,269
Camp 23	181	199	808	845	1,451	1,491	632	650	2,687	1,690	170	159	2,661	10,963
Camp 25	140	158	710	701	1,105	1,189	742	685	2,209	1,578	168	112	2,143	9,497
Camp 20	126	139	574	655	807	873	416	453	1,822	1,349	127	98	1,794	7,439
Camp 4 Extension	110	110	489	545	696	717	343	348	1,477	1,179	93	81	1,495	6,188
Camp 20 Extension	94	78	374	403	479	495	261	250	1,103	889	65	50	1,120	4,541
No camp**	114	98	467	441	607	634	280	321	1,277	1,058	86	64	1,281	5,447
<b>Total</b>	<b>15,358</b>	<b>15,328</b>	<b>67,717</b>	<b>70,545</b>	<b>99,671</b>	<b>105,056</b>	<b>61,348</b>	<b>61,944</b>	<b>214,890</b>	<b>167,328</b>	<b>15,930</b>	<b>14,120</b>	<b>209,728</b>	<b>909,235</b>

\*Kutupalong RC includes 14,277 registered refugees of 2,617 families & Nayapara RC includes 19,895 registered refugees of 3,704 families

\*\*This represents refugees residing outside formal camp boundaries

## Population figures by period of arrival

Arrival Period	Before 09 Oct 2016		09 Oct 2016 - 24 Aug 2017		25 Aug 2017 - 31 Dec 2017		01 Jan 2018 - Current date		Total Families	Total Individuals
Camp	Total Families	Total Individuals	Total Families	Total Individuals	Total Families	Total Individuals	Total Families	Total Individuals		
Camp 15	11	47	761	3,376	10,400	45,977	12	53	11,184	49,453
Camp 13	16	60	785	3,433	8,924	37,975	75	304	9,800	41,772
Camp 26	72	352	828	3,682	8,059	35,101	437	1,891	9,396	41,026
Camp 1W	25	95	1,042	4,494	8,375	36,344	28	94	9,470	41,027
Camp 1E	40	188	1,651	7,118	7,599	33,080	34	119	9,324	40,505
Camp 3	21	99	938	4,136	8,149	34,997	30	125	9,138	39,357
Camp 7	112	486	1,085	4,690	8,123	34,105	91	365	9,411	39,646
Camp 9	95	379	2,087	8,476	6,472	27,779	29	104	8,683	36,738
Camp 24	2,173	10,526	523	2,210	5,049	20,756	16	52	7,761	33,544
Camp 10	13	56	616	2,633	6,999	30,188	23	86	7,651	32,963
Camp 8W	27	113	639	2,795	6,720	29,145	82	317	7,468	32,370
Camp 4	30	122	336	1,380	7,270	29,570	269	1,127	7,905	32,199
Camp 14	12	44	603	2,795	6,391	28,906	44	176	7,050	31,921
Camp 11	4	19	1,080	4,795	6,025	26,496	19	75	7,128	31,385
Camp 8E	35	143	849	3,714	6,281	27,231	38	130	7,203	31,218
Camp 2E	3,325	14,084	1,691	7,092	2,216	8,759	56	182	7,288	30,117
Nayapara RC*	3,750	20,077	248	968	1,671	5,777	36	106	5,705	26,928
Camp 18	15	59	166	683	6,323	25,922	36	133	6,540	26,797
Camp 2W	1,895	8,680	1,421	6,140	2,587	10,969	58	197	5,961	25,986
Camp 5	30	120	524	2,215	5,470	22,702	23	83	6,047	25,120
Camp 6	57	250	1,127	5,073	4,619	19,621	21	65	5,824	25,009
Camp 12	5	29	267	1,212	4,951	22,290	53	209	5,276	23,740
Camp 22	6	39	207	998	4,358	21,121	14	48	4,585	22,206
Camp 16	5	25	279	1,236	4,574	20,434	22	90	4,880	21,785
Camp 19	4	13	398	1,792	4,227	18,228	198	804	4,827	20,837
Kutupalong RC*	2,839	15,200	155	609	537	2,134	16	53	3,547	17,996
Camp 17	35	156	213	870	2,630	10,986	1,137	4,965	4,015	16,977
Camp 27	29	142	275	1,300	2,698	12,149	148	678	3,150	14,269
Camp 21	12	53	145	627	2,723	11,087	137	502	3,017	12,269
Camp 23	252	1,155	287	1,222	2,106	8,517	16	69	2,661	10,963
Camp 25	17	85	252	1,122	1,870	8,271	4	19	2,143	9,497
Camp 20	59	262	111	489	1,297	5,366	327	1,322	1,794	7,439
Camp 4 Extension	58	226	132	579	1,172	4,820	133	563	1,495	6,188
Camp 20 Extension	82	342	66	292	745	3,027	227	880	1,120	4,541
No camp**	105	449	81	338	708	3,076	387	1,584	1,281	5,447
<b>Grand Total</b>	<b>15,266</b>	<b>74,175</b>	<b>21,868</b>	<b>94,584</b>	<b>168,318</b>	<b>722,906</b>	<b>4,276</b>	<b>17,570</b>	<b>209,728</b>	<b>909,235</b>

\*Kutupalong RC includes 14,277 registered refugees of 2,617 families & Nayapara RC includes 19,895 registered refugees of 3,704 families

\*\*This represents refugees residing outside formal camp boundaries

Creation date: 31 January 2019 Sources: UNHCR Feedback: bgdcoim@unhcr.org

## Population figures by specific needs

Camp	Families with separated children	Families with unaccompanied children	Families with a person with disability	Families with older person at risk	Families with older person at risk with children	Families with people with serious medical condition	Single male parents with infants	Single female parent	Families with people with specific needs
Camp 26	169	53	280	357	114	215	81	2,181	3,235
Camp 15	234	60	354	589	198	460	63	1,606	3,213
Camp 1E	173	45	556	461	327	489	57	1,164	2,950
Camp 7	225	28	361	374	243	460	106	1,286	2,833
Nayapara RC	176	41	607	164	50	1,197	35	1,186	2,817
Camp 13	243	79	311	395	208	344	64	1,424	2,805
Camp 1W	166	32	405	448	215	446	66	1,269	2,773
Camp 3	201	61	374	367	288	317	64	1,426	2,677
Camp 24	177	73	299	285	121	256	43	1,637	2,632
Camp 4	246	90	203	301	205	294	101	1,502	2,588
Camp 9	149	73	382	396	260	487	95	1,046	2,538
Camp 10	125	79	381	336	239	505	93	1,036	2,434
Camp 8E	152	69	338	364	239	410	83	1,057	2,317
Camp 2E	160	54	264	253	208	307	53	1,219	2,274
Camp 18	152	62	238	220	167	293	81	1,133	2,080
Camp 11	167	61	263	290	155	230	65	1,058	1,980
Camp 5	159	68	213	297	162	213	61	1,094	1,965
Camp 14	119	45	185	314	138	305	43	968	1,912
Camp 6	165	44	213	242	130	314	42	837	1,850
Camp 2W	109	17	287	240	115	266	59	810	1,751
Camp 8W	95	36	233	266	148	292	79	742	1,686
Kutupalong RC	52	17	344	86	35	772	7	527	1,519
Camp 12	81	33	142	204	103	138	32	768	1,465
Camp 19	122	33	190	219	81	118	46	761	1,418
Camp 16	92	22	167	201	81	159	35	704	1,339
Camp 17	107	22	140	152	82	125	41	705	1,245
Camp 22	69	17	159	156	77	154	16	580	1,120
Camp 27	55	13	99	88	34	63	21	729	1,025
Camp 23	50	12	72	97	43	69	11	752	1,020
Camp 21	66	23	109	96	32	105	35	512	903
Camp 25	38	23	75	83	33	87	18	493	754
Camp 20	26	12	91	68	47	75	19	293	571
Camp 4 Extension	22	13	54	39	35	48	15	191	406
Camp 20 Extension	26	13	45	37	25	41	12	144	316
No camp	19	6	27	39	12	21	8	143	320
<b>Total</b>	<b>4,387</b>	<b>1,429</b>	<b>8,461</b>	<b>8,524</b>	<b>4,650</b>	<b>10,075</b>	<b>1,750</b>	<b>32,983</b>	<b>64,731</b>