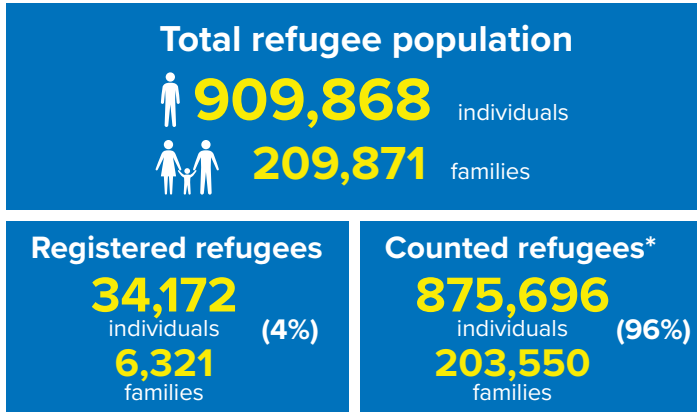
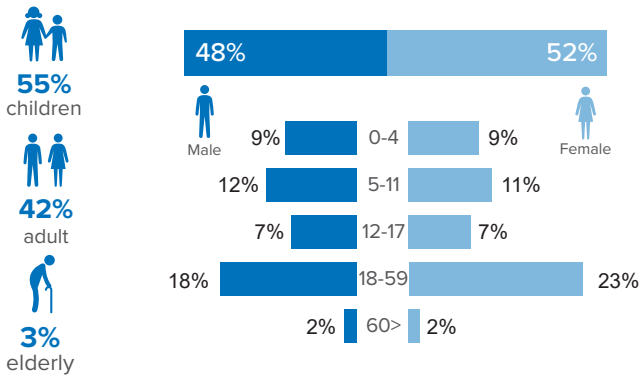


## Refugee population figure

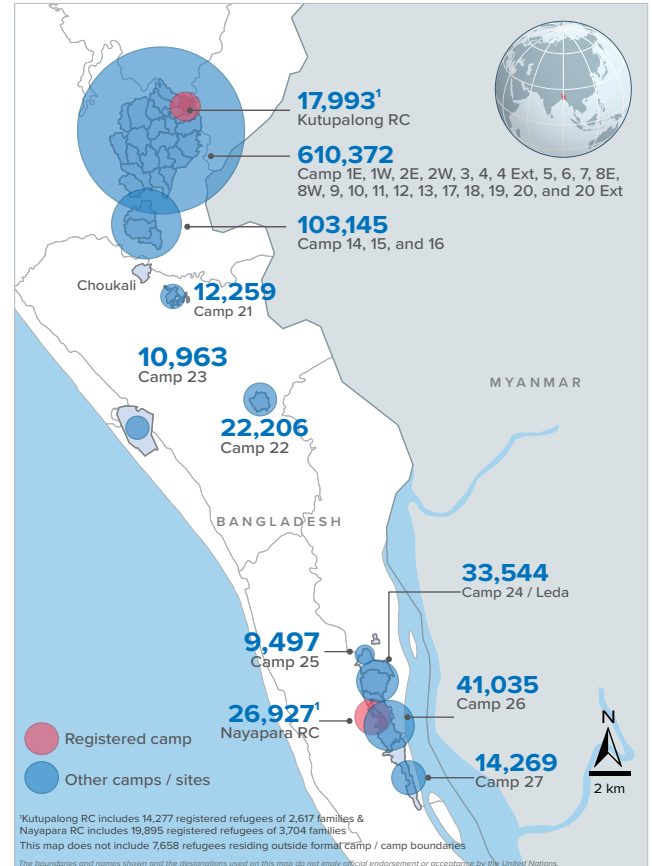


\* Some refugees living in host communities and in certain locations beyond the camp boundaries may not have been counted.

## Demography

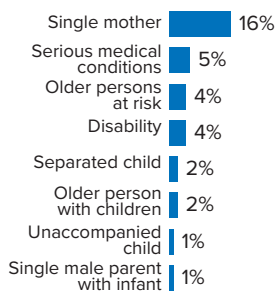


## Refugee population density



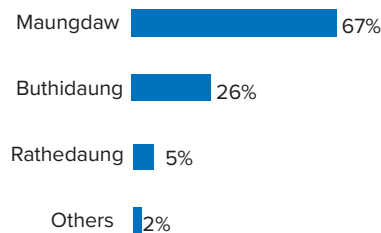
## Specific needs

**31%** of the families have been identified with at least one protection vulnerability\*



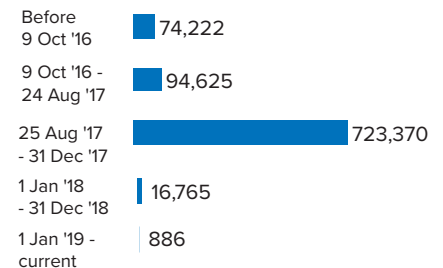
## Place of origin

**67%** of the Rohingya refugees comes from Maungdaw Township



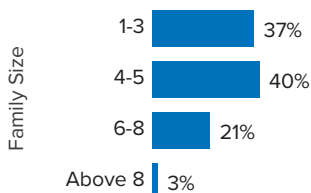
## Period of arrival

**81%** of current population arrived between Aug. 2017 to date



## Family size breakdown

**40%** of the families have a standard family size of 4-5 persons



## Linking exercise

The Linking Exercise, conducted from December 2017 until February 2018, was a collaborative effort between the Government of Bangladesh and the United Nations High Commissioner for Refugees that aimed to merge the family based Rohingya population data collected through the Family Counting Exercise with attributes of the individual Rohingya population data collected by the Ministry of Home Affairs.

The exercise was conducted with a view to creating a unified dataset with individual data grouped into families which will be used to better protect and assist families.

\*Figures are the percentage of total families with at least one person with a specific need. More than one specific need may be present within one family.

## Age and gender breakdown by camp/site

Camp	Infant female below 1	Infant male below 1	1-4 Children female	1-4 Children male	5-11 Children female	5-11 Children male	12-17 Children female	12-17 Children male	18-59 Adult female	18-59 Adult male	60+ Elderly female	60+ Elderly male	Total Families	Total Individuals
Camp 15	951	900	3,545	3,691	5,302	5,482	3,425	3,605	11,542	9,188	907	905	11,182	49,443
Camp 13	721	772	3,098	3,213	4,519	4,774	2,779	2,859	9,819	7,751	744	686	9,789	41,735
Camp 26	694	616	3,132	3,135	4,748	5,205	2,973	2,775	9,807	6,760	635	555	9,398	41,035
Camp 1W	763	756	2,959	2,972	4,443	4,535	2,689	2,790	9,667	7,771	865	754	9,456	40,964
Camp 1E	676	744	2,824	3,011	4,324	4,539	2,697	2,798	9,449	7,847	817	710	9,303	40,436
Camp 3	702	742	3,029	3,121	4,229	4,453	2,538	2,725	9,438	7,376	702	592	9,206	39,647
Camp 7	711	732	3,021	3,164	4,279	4,481	2,677	2,615	9,209	7,198	724	655	9,370	39,466
Camp 9	625	567	2,800	2,808	3,984	4,053	2,482	2,486	8,562	6,914	712	692	8,672	36,685
Camp 24	506	521	2,278	2,488	4,028	4,147	2,308	2,403	8,003	5,904	543	415	7,761	33,544
Camp 10	628	620	2,596	2,724	3,398	3,744	2,147	2,086	7,791	6,110	598	521	7,649	32,963
Camp 8W	545	518	2,619	2,567	3,427	3,633	2,033	2,145	7,637	6,093	606	534	7,465	32,357
Camp 4	574	626	2,448	2,582	3,584	3,708	2,043	2,058	7,622	5,945	521	404	7,891	32,115
Camp 14	561	586	2,316	2,559	3,396	3,737	2,262	2,246	7,301	5,824	605	524	7,049	31,917
Camp 11	546	577	2,363	2,386	3,378	3,578	2,134	2,189	7,249	5,918	533	495	7,118	31,346
Camp 8E	496	498	2,247	2,326	3,362	3,413	2,306	2,234	7,353	5,890	537	554	7,202	31,216
Camp 2E	557	525	2,311	2,345	3,316	3,601	1,808	1,849	7,221	5,425	517	443	7,237	29,918
Nayapara RC*	86	90	1,549	1,624	2,914	2,994	2,301	2,359	7,142	5,007	447	414	5,704	26,927
Camp 18	464	494	2,184	2,209	2,852	2,966	1,781	1,670	6,338	4,958	352	357	6,498	26,625
Camp 2W	425	430	1,915	2,002	2,905	3,140	1,626	1,613	6,078	4,785	493	390	5,920	25,802
Camp 5	435	473	1,960	2,027	2,779	2,828	1,542	1,622	5,939	4,624	466	422	6,044	25,117
Camp 6	523	464	2,009	2,146	2,711	2,921	1,466	1,549	5,791	4,580	440	389	5,815	24,989
Camp 12	403	386	1,745	1,864	2,538	2,795	1,707	1,638	5,499	4,276	438	379	5,258	23,668
Camp 22	410	381	1,597	1,799	2,548	2,614	1,671	1,667	4,844	3,963	378	334	4,585	22,206
Camp 16	433	404	1,607	1,703	2,351	2,569	1,522	1,434	5,023	4,028	384	327	4,880	21,785
Camp 19	336	324	1,590	1,674	2,243	2,490	1,430	1,464	4,855	3,779	349	286	4,821	20,820
Kutupalong RC*	78	58	1,018	1,166	1,925	2,054	1,469	1,431	4,596	3,685	264	249	3,546	17,993
Camp 17	267	300	1,433	1,430	1,884	1,980	1,032	1,039	4,012	3,073	244	241	4,004	16,935
Camp 27	237	217	1,094	1,148	1,674	1,710	1,030	1,063	3,307	2,384	219	186	3,150	14,269
Camp 21	224	211	903	961	1,349	1,411	761	797	2,960	2,362	185	135	3,010	12,259
Camp 23	181	199	808	845	1,451	1,491	632	650	2,687	1,690	170	159	2,661	10,963
Camp 25	140	158	710	701	1,105	1,189	742	685	2,209	1,578	168	112	2,143	9,497
Camp 20	124	137	562	644	797	859	412	448	1,800	1,324	122	97	1,770	7,326
Camp 4 Extension	105	105	464	521	667	676	318	328	1,407	1,112	81	79	1,419	5,863
Camp 20 Extension	87	74	361	381	459	482	257	241	1,064	860	63	50	1,076	4,379
No camp**	153	142	679	670	878	874	379	413	1,812	1,468	108	82	1,819	7,658
<b>Total</b>	<b>15,367</b>	<b>15,347</b>	<b>67,774</b>	<b>70,607</b>	<b>99,747</b>	<b>105,126</b>	<b>61,379</b>	<b>61,974</b>	<b>215,033</b>	<b>167,450</b>	<b>15,937</b>	<b>14,127</b>	<b>209,871</b>	<b>909,868</b>

\*Kutupalong RC includes 14,277 registered refugees of 2,617 families & Nayapara RC includes 19,895 registered refugees of 3,704 families

\*\*This represents refugees residing outside formal camp boundaries

## Population figures by period of arrival

Arrival Period	Before 09 Oct 2016		09 Oct 2016 - 24 Aug 2017		25 Aug 2017 - 31 Dec 2017		01 Jan 2018 - 31 Dec 2018		01 Feb 2019 - Current date		Total Families	Total Individuals
Camp	Total Families	Total Individuals	Total Families	Total Individuals	Total Families	Total Individuals	Total Families	Total Individuals	Total Families	Total Individuals		
Camp 15	11	47	761	3,376	10,400	45,975	10	45	-	-	11,182	49,443
Camp 13	12	48	785	3,434	8,922	37,965	70	288	-	-	9,789	41,735
Camp 26	72	352	828	3,682	8,061	35,110	437	1,891	-	-	9,398	41,034
Camp 1W	25	95	1,042	4,494	8,363	36,286	26	89	-	-	9,456	40,964
Camp 1E	40	188	1,647	7,104	7,582	33,025	34	119	-	-	9,303	40,436
Camp 3	21	99	950	4,190	8,207	35,242	28	116	-	-	9,206	39,647
Camp 7	102	439	1,079	4,670	8,109	34,035	80	322	-	-	9,370	39,466
Camp 9	93	373	2,088	8,479	6,466	27,748	25	85	-	-	8,672	36,685
Camp 24	2,173	10,526	523	2,210	5,049	20,756	16	52	-	-	7,761	33,544
Camp 10	12	53	616	2,633	6,998	30,191	23	86	-	-	7,649	32,963
Camp 8W	27	113	639	2,795	6,719	29,142	80	307	-	-	7,465	32,357
Camp 4	29	118	339	1,390	7,256	29,493	267	1,114	-	-	7,891	32,115
Camp 14	12	44	603	2,795	6,391	28,906	43	172	-	-	7,049	31,917
Camp 11	3	11	1,080	4,795	6,019	26,477	16	63	-	-	7,118	31,346
Camp 8E	35	143	849	3,714	6,281	27,231	37	128	-	-	7,202	31,216
Camp 2E	3,310	14,029	1,688	7,080	2,190	8,652	49	157	-	-	7,237	29,918
Nayapara RC*	3,749	20,076	248	968	1,671	5,777	36	106	-	-	5,704	26,927
Camp 18	12	48	165	679	6,295	25,802	26	96	-	-	6,498	26,625
Camp 2W	1,888	8,657	1,413	6,092	2,566	10,874	53	179	-	-	5,920	25,802
Camp 5	30	120	524	2,215	5,469	22,704	21	78	-	-	6,044	25,117
Camp 6	57	250	1,126	5,069	4,613	19,608	19	62	-	-	5,815	24,989
Camp 12	5	29	264	1,202	4,939	22,238	50	199	-	-	5,258	23,668
Camp 22	6	39	207	998	4,358	21,121	14	48	-	-	4,585	22,206
Camp 16	5	25	279	1,236	4,574	20,434	22	90	-	-	4,880	21,785
Camp 19	4	13	397	1,790	4,226	18,224	194	793	-	-	4,821	20,820
Kutupalong RC*	2,839	15,200	155	609	536	2,131	16	53	-	-	3,546	17,993
Camp 17	34	151	209	857	2,626	10,970	1,1365	4,957	-	-	4,004	16,935
Camp 27	29	142	275	1,300	2,698	12,149	148	678	-	-	3,150	14,269
Camp 21	12	53	144	626	2,725	11,101	129	479	-	-	3,010	12,259
Camp 23	252	1,155	287	1,222	2,106	8,517	16	69	-	-	2,661	10,963
Camp 25	17	85	252	1,122	1,870	8,271	4	19	-	-	2,143	9,497
Camp 20	57	250	109	477	1,278	5,281	326	1,318	-	-	1,770	7,326
Camp 4 Extension	57	218	122	539	1,107	4,543	133	563	-	-	1,419	5,863
Camp 20 Extension	67	284	66	292	728	2,967	215	836	-	-	1,076	4,379
No camp**	181	749	118	491	1,022	4,424	288	1,108	210	886	1,819	7,658
<b>Total</b>	<b>15,278</b>	<b>74,222</b>	<b>21,877</b>	<b>94,625</b>	<b>168,420</b>	<b>723,370</b>	<b>4,086</b>	<b>16,765</b>	<b>210</b>	<b>886</b>	<b>209,871</b>	<b>909,868</b>

\*Kutupalong RC includes 14,277 registered refugees of 2,617 families & Nayapara RC includes 19,895 registered refugees of 3,704 families

\*\*This represents refugees residing outside formal camp boundaries

## Population figures by specific needs

Camp	Families with separated children	Families with unaccompanied children	Families with a person with disability	Families with older person at risk	Families with older person at risk with children	Families with people with serious medical condition	Single male parents with infants	Single female parent	Families with people with specific needs
Camp 26	169	53	280	357	114	215	81	2,182	3,236
Camp 15	234	60	354	589	198	460	63	1,606	3,212
Camp 1E	173	45	557	460	327	489	57	1,164	2,942
Camp 7	225	28	362	374	243	460	107	1,289	2,833
Nayapara RC	176	41	607	164	50	1,197	35	1,186	2,817
Camp 13	243	79	311	395	208	344	64	1,424	2,803
Camp 1W	166	32	404	448	215	447	66	1,271	2,774
Camp 3	203	61	376	368	289	319	66	1,439	2,696
Camp 24	177	73	299	285	121	256	43	1,637	2,632
Camp 4	246	92	202	302	205	293	101	1,504	2,590
Camp 9	149	73	382	396	260	487	95	1,046	2,538
Camp 10	125	79	381	336	239	505	93	1,036	2,432
Camp 8E	152	69	338	364	239	410	83	1,057	2,317
Camp 2E	160	54	263	253	208	307	53	1,219	2,266
Camp 18	152	62	238	220	167	293	81	1,133	2,072
Camp 11	167	61	263	290	155	230	65	1,058	1,976
Camp 5	159	68	213	297	163	213	61	1,094	1,966
Camp 14	119	45	185	314	138	305	43	968	1,911
Camp 6	165	44	213	242	130	313	42	837	1,842
Camp 2W	109	17	287	240	115	266	59	810	1,747
Camp 8W	95	36	233	266	148	292	79	742	1,686
Kutupalong RC	52	17	344	86	35	772	7	527	1,518
Camp 12	81	33	142	204	103	138	32	768	1,461
Camp 19	122	33	190	219	81	118	46	761	1,417
Camp 16	92	22	167	201	81	159	35	704	1,339
Camp 17	107	21	139	153	83	125	41	705	1,245
Camp 22	69	17	159	156	77	154	16	580	1,120
Camp 27	55	13	99	88	34	63	21	729	1,025
Camp 23	50	12	72	97	43	69	11	752	1,020
Camp 21	66	23	110	97	32	105	35	512	901
Camp 25	38	23	75	83	33	87	18	493	754
Camp 20	25	12	92	68	46	75	19	289	566
Camp 4 Extension	20	13	52	36	33	47	13	179	387
Camp 20 Extension	26	12	44	37	25	41	12	140	302
No camp	21	6	28	39	12	22	7	142	401
<b>Total</b>	<b>4,388</b>	<b>1,429</b>	<b>8,461</b>	<b>8,524</b>	<b>4,650</b>	<b>10,076</b>	<b>1,750</b>	<b>32,983</b>	<b>64,744</b>