

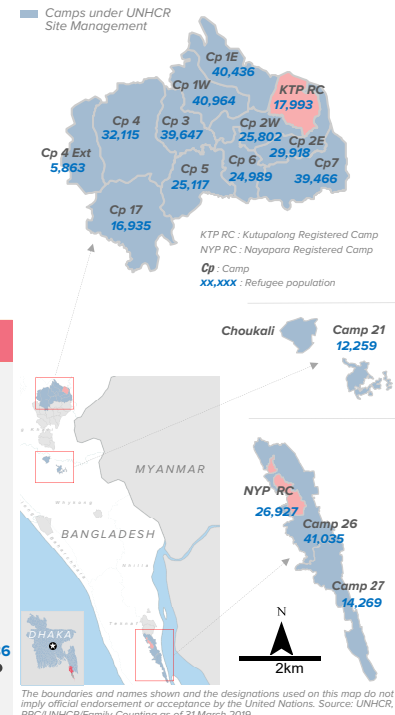
SITUATION OVERVIEW

Over 741,000 Rohingya refugees have fled violence from Myanmar's Rakhine state since August 2017 and are hosted in Bangladesh. Most of the refugees rely on humanitarian assistance, having left with few possessions and exhausted their financial resources during the journey.

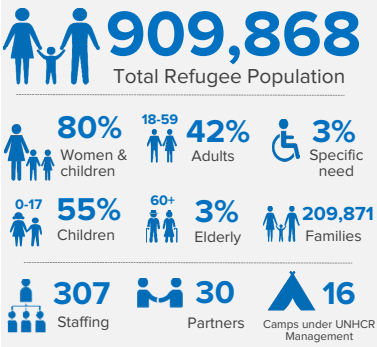
More than 909,000 Rohingya refugee women, men, girls and boys are hosted in Cox's Bazar District, including 34,172 registered refugees who arrived in the 1990s (4%); and other unregistered Rohingya refugees who had settled in host communities prior to August 2017. Children make up 55% of the total refugee population and women and girls make up 52%. One in three refugee families have at least one easily identifiable protection vulnerability. Whilst the pace of arrivals has decreased, refugees continue to arrive in Bangladesh, as of end of March 2019.

The dashboard monitor the monthly achievements of selected indicators from the 2019 country operation plan for each strategic area of activity with cumulative key figures and monthly highlights.

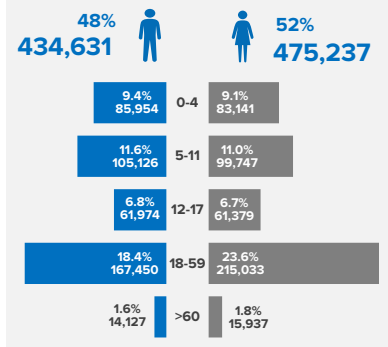
GEOGRAPHIC SITUATION



POPULATION KEY FIGURES



AGE & GENDER BREAKDOWN



POPULATION TRENDS



PROTECTION

KEY FIGURES

- 25,779** refugee's families have participated in the joint Government of Bangladesh-UNHCR registration exercise
- 27,070** refugees provided with legal capacity building, awareness and counselling
- 16,303** complaints received under the community-based complaints mechanism
- 2,095** refugees with specific needs have been referred
- 581** members of community-based child protection (CP) structures trained on CP approaches and are actively preventing and responding to CP needs
- 160** partners, government and UNHCR staff trained on SGBV prevention and response

PROGRESS AGAINST 2019 TARGETS

Indicator	Achieved	Progress (%)	Gap	Target
# of refugees registered on individual basis who's data have been updated	115,763	13%		910,172
# of refugees receiving legal assistance	1,763	88%		2,000
# of community groups supported (Community self-management)	45	100%		45
# of refugees with disabilities receiving specific support	387	19%		2,000
# of unaccompanied and separated refugee children identified and documented	215	100%		215
# of children's committees, groups and other structures that are operational and facilitate children's participation	171	>100%		90
# of community-based committees/ groups working on SGBV prevention and response	6	67%		9
# of reported SGBV incidents for which survivors receive psychosocial counselling	416	55%		750

HIGHLIGHTS (MARCH 2019)

- 61,956** refugees have participated in the joint Government of Bangladesh-UNHCR registration exercise in this reporting month.
- 727** refugees received legal counselling while **92** advocacy interventions for the promotion and protection of refugee rights have been concluded in this reporting month.
- 272** refugees with disabilities received specific support, **3,076** refugees with specific need have received non-cash support and **528** PSN* have been referred in this reporting month.
- 4,522** complaints received under the community-based complaints mechanism and **6** new community groups have been supported in this reporting month.
- 215** members of community-based child protection structures have been trained while **70** UASCs have been identified and documented in this reporting month.
- 39** partners, government and UNHCR staff have been trained on SGBV prevention and response while **35** survivors of SGBV incidents received psychosocial counselling in this reporting month.

* Person with Specific Need

EDUCATION

KEY FIGURES

- 57,149** children accessing education
- 1,178** teachers recruited, trained and deployed
- 1,479** learning spaces established

PROGRESS AGAINST 2019 TARGETS

Indicator	Achieved	Progress (%)	Gap	Target
# of children enrolled in primary and early childhood education	52,659	88%		59,600
# of students enrolled in lower secondary education and youth lifelong learning program	4,490	39%		11,480
# of educational facilities constructed or improved	390	85%		458

HIGHLIGHTS (MARCH 2019)

- 40,468** children attending primary education in this reporting month.
- 2,641** students attending lower secondary education in this reporting month.
- 57,149** students have received educational materials in this reporting month.

HEALTH & NUTRITION

* % of children aged 6-59 months identified as acutely malnourished

KEY FIGURES

- 127,367** primary health care consultations conducted
- 639** deliveries conducted by skilled attendant in health facilities
- 412** specialist mental health consultations provided

PROGRESS AGAINST 2019 TARGETS

Indicator	Achieved	Progress (%)	Gap	Target
# of health facilities equipped/constructed/rehabilitated	23	96%		24
# of patients referred for secondary and tertiary medical care	1,465	24%		6,000
Prevalence of global acute malnutrition (6-59 months) *	11.0	91%		10.0
# of new admissions to community management of acute malnutrition programmes	2,542	11%		24,000

HIGHLIGHTS (MARCH 2019)

- 36,935** primary health care consultations and **192** deliveries conducted by skilled attendant in health facilities in this reporting month.
- 111** mental health consultation and **8,848** refugees participated in group psychosocial activities in this reporting month.
- 730** new admissions to community management of acute malnutrition programmes have been reported in this reporting month.


WASH

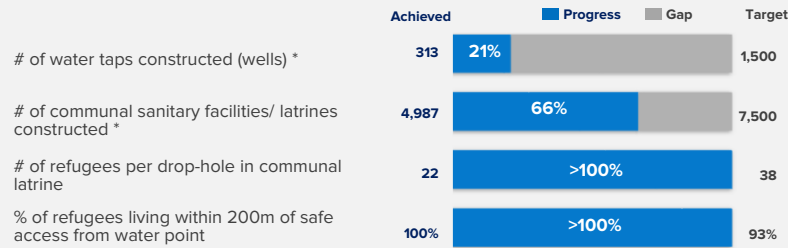
* Cumulative achievement since December 2018

KEY FIGURES

41,617 WASH facilities assessed during a sweep survey

56,897 WASH hygiene kits distributed

2,379 tube well and latrine maintenance conducted (repair, renovate, decommission and desludge)

PROGRESS AGAINST 2019 TARGETS

HIGHLIGHTS (MARCH 2019)

- **109** WASH facilities have been maintained including, **5** tube wells and **104** latrines as of March 2019


SHELTER

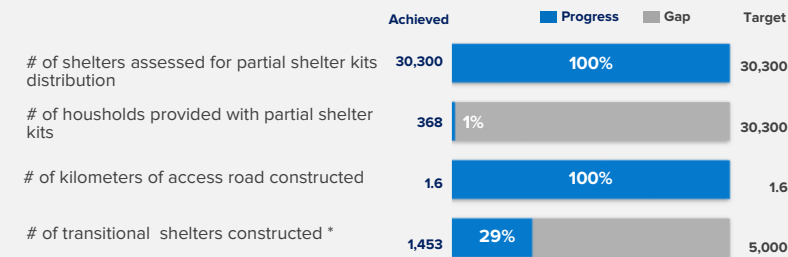
* Cumulative achievement since December 2018

KEY FIGURES

33 kilometers of roads, bridges, steps, retaining structures and drainage constructed

90,430 pre-monsoon shelter tie-down kits distributed

85,546 shelter padlocks provided

PROGRESS AGAINST 2019 TARGETS

HIGHLIGHTS (MARCH 2019)

- **33.2** kilometers of infrastructure constructed since January, including **1.6** km of road, **0.6** km of bridges, **9** km of steps, **9** km of retaining structures and **13** km of drainage.
- **368** partial shelter kits provided in this reporting month while **1,453** transitional shelters have been constructed last year.
- **105** pre-monsoon shelter tie-down kits and **131** shelter padlocks distributed since January 2019 reporting month.

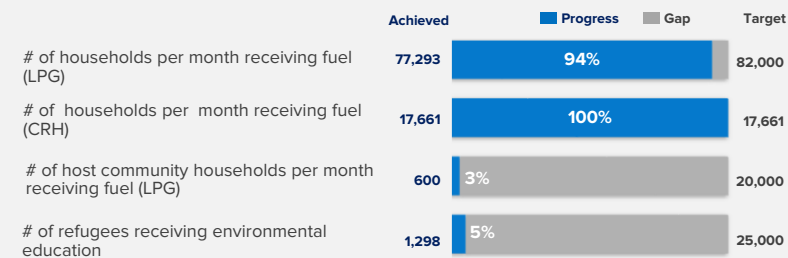

ENVIRONMENT & ENERGY
KEY FIGURES

7,531 host community households have been visited during LPG distribution assessment

39 conflicts with elephants successfully mitigated by trained ERT members

586 ERT volunteers trained and working

ERT = Elephant Response Team

PROGRESS AGAINST 2019 TARGETS

HIGHLIGHTS (MARCH 2019)

- **3,187** households have received LPG cylinder while refill of LPG have been distributed to **13,090** others families in this reporting month.
- **600** host community households have received LPG cylinder as of this month while **897** host community households have been visited during LPG distribution assessment in this reporting month.


NFI & SITE MANAGEMENT
KEY FIGURES

16 camps managed by site management support agency partners

11,660 female/menstrual hygiene kits distributed

PROGRESS AGAINST 2019 TARGETS

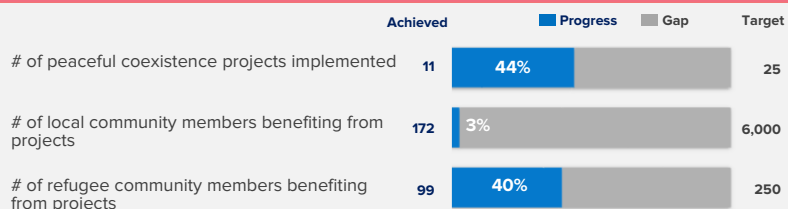
HIGHLIGHTS (MARCH 2019)

- **844** households received core relief items during this reporting month.
- **11,660** households received female menstrual hygiene kits during this reporting month.


SOCIAL COHESION
KEY FIGURES

2,028 host community households are continuing their intervention with TUP project

3,163 members of local community beneficiary profiling completed

PROGRESS AGAINST 2019 TARGETS

HIGHLIGHTS (MARCH 2019)

- **286** host community and refugee members are enrolled for skill development training for ensuring their self-reliance

THANK YOU

UNHCR's humanitarian response in Bangladesh is made possible thanks to the generous support of major donors who have contributed unrestricted funding to UNHCR's global operations, and to donors who have generously contributed directly to UNHCR Bangladesh operations.

In 2018 and 2019, support has been received from the people and governments of:

Australia, Bangladesh, Canada, Denmark, Estonia, the European Union, France, Germany, Ireland, Italy, Japan, the Republic of Korea, the Netherlands, New Zealand, Norway, Qatar, the Kingdom of Saudi Arabia, Spain, Sweden, Switzerland, Thailand, the United Arab Emirates, the United Kingdom, and the United States of America.

UNHCR is sincerely grateful for the additional support received from many individuals, foundations, and companies worldwide including **Bill & Melinda Gates Foundation, the Church of Jesus Christ of Latter-day Saints, Education Cannot Wait, Kuwait Finance House, Qatar Charity, and Thani Bin Abdullah Humanitarian Fund.**